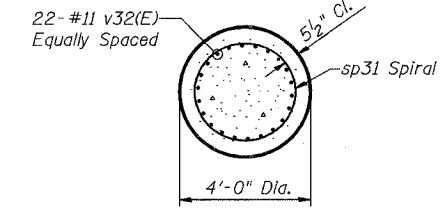
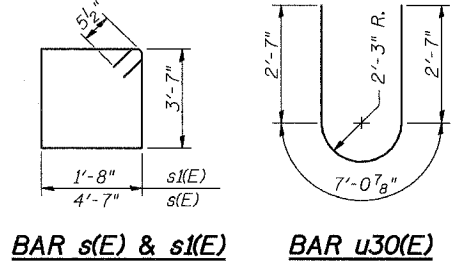
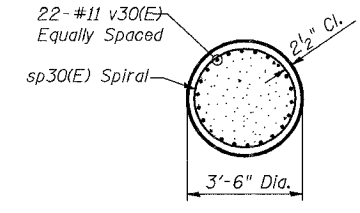
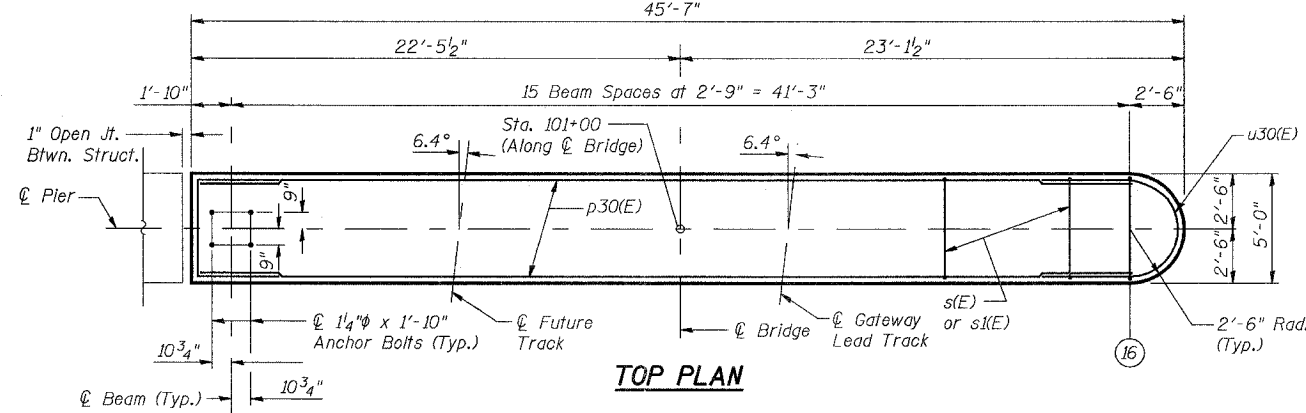
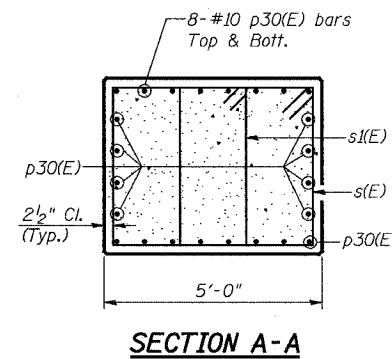


STATE OF ILLINOIS  
DEPARTMENT OF TRANSPORTATION

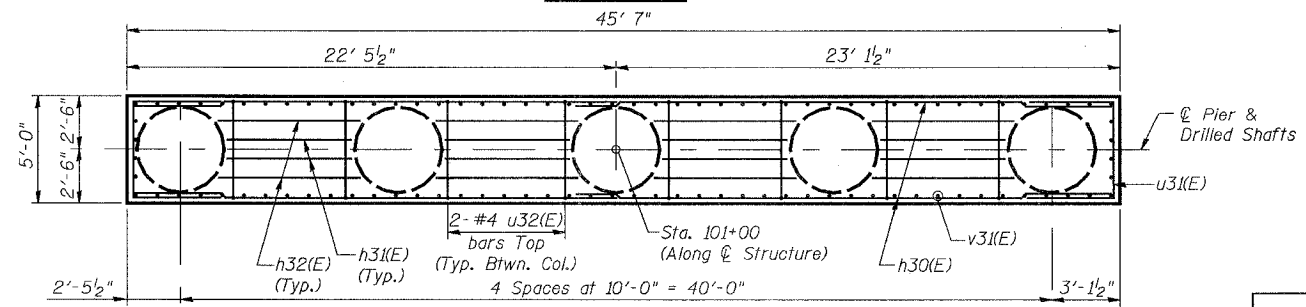
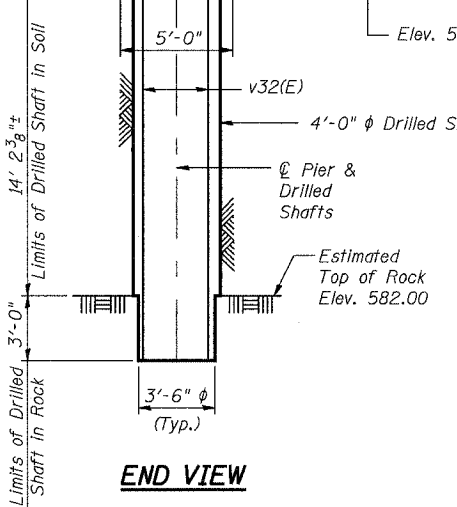
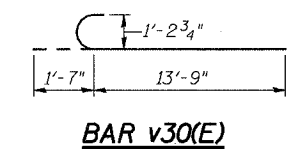
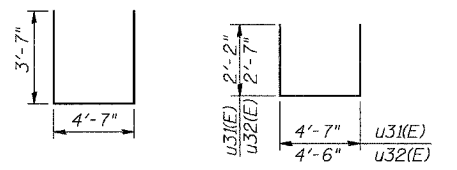
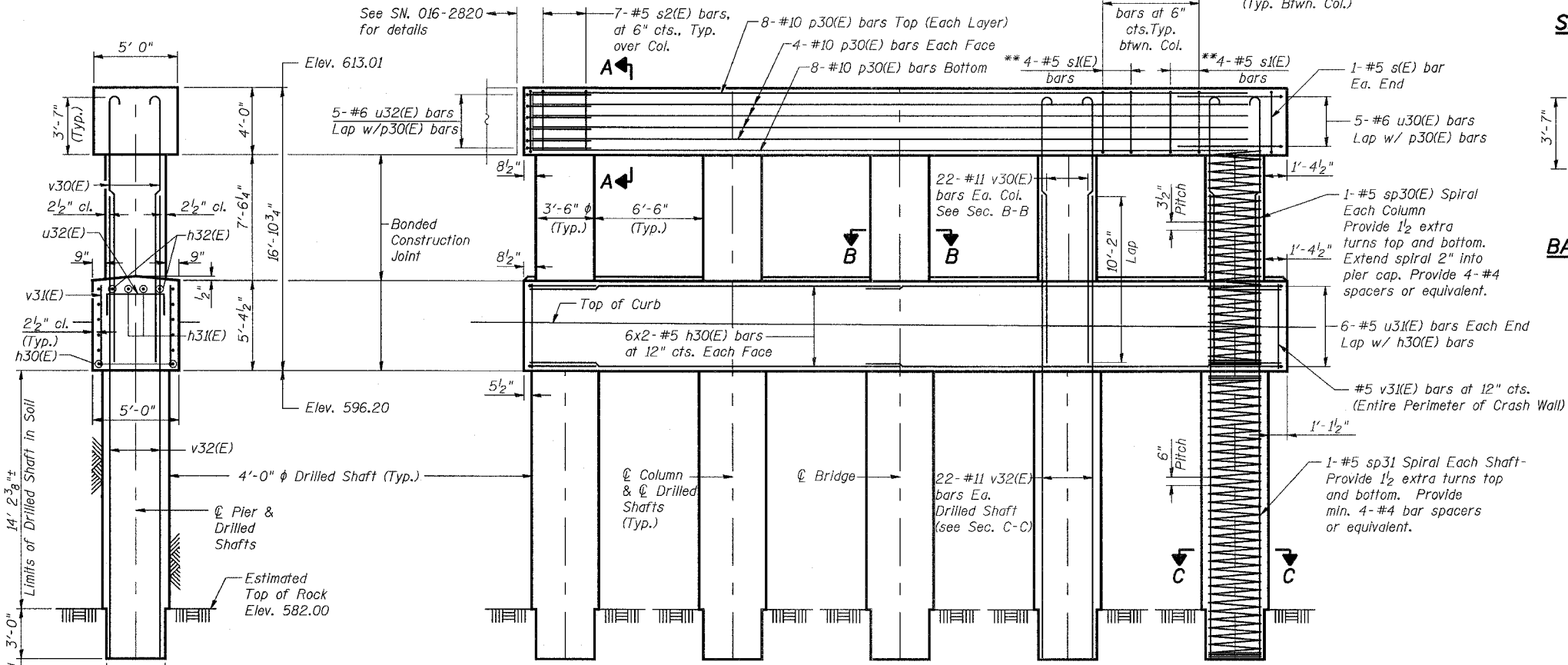
ROUTE NO.	SECTION	COUNTY	TOTAL SHEETS	SHEET NO.
F.A.P. 351	2008-001VB	COOK	579	407
FED. ROAD DIST. NO. 7		ILLINOIS	FED. AID PROJECT-	
CONTRACT NO. 60E10				

SHEET NO. 22  
25 SHEETS



**PIER  
BILL OF MATERIAL**

Bar	No.	Size	Length	Shape
h30(E)	24	#5	23'-8"	—
h31(E)	8	#5	6'-6"	—
h32(E)	8	#5	7'-7"	—
p30(E)	24	#10	42'-11"	—
s(E)	54	#5	17'-3"	□
s1(E)	32	#5	11'-5"	□
s2(E)	35	#5	11'-9"	□
sp30(E)	5	#5	12'-11"	⋈
sp31	5	#5	17'-2"	⋈
u30(E)	5	#6	12'-3"	U
u31(E)	12	#5	8'-11"	—
u32(E)	5	#6	9'-8"	—
v30(E)	110	#11	15'-4"	—
v31(E)	100	#5	4'-11"	—
v32(E)	110	#11	30'-1"	—
Structure Excavation			Cu. Yd.	75.7
Non-Special Waste Disposal			Cu. Yd.	108.7
Concrete Structures			Cu. Yd.	92.2
Reinforcement Bars			Pound	2,200
Reinforcement Bars, Epoxy Coated			Pound	36,830
Concrete Sealer			Sq. Ft.	225
Drilled Shaft in Soil			Cu. Yd.	33.0
Drilled Shaft in Rock			Cu. Yd.	5.3



**NOTES:**

Reinforcement Bars designated (E) shall be epoxy coated.

Length of Spiral given is height of Spiral. Weight includes weight of spacers for Spiral.

Drilled Shafts shall be drilled to Elevation 579.00. Quantities and Detailing are for the estimated Elevations shown on the Plans. The actual conditions encountered in each Shaft may differ and the Drilled Shaft and Reinforcement Quantities shall be adjusted accordingly as directed by the Engineer and paid for at the corresponding Unit Bid Price.

Space reinforcement in seat to miss anchor bolts.

Min. Lap Lengths: #9 bar = 6'-6"

Bars designated 6x2 - #5 ... etc. indicates 6 lines of bars with 2 lengths per line.

REVISIONS	
NAME	DATE

ILLINOIS DEPARTMENT OF TRANSPORTATION  
US RTE 6 FROM I-294 TO IL RTE 1

**PIER**

CN GATEWAY LEAD TRACK  
BRIDGE 20.6E OVER U.S. RTE. 6 (159TH STREET)  
STATION 93+69.01      STRUCTURE NO. 016-2819  
SCALE: 1/4"=1'-0"      DATE: 2/21/2008

**URS**  
100 South Wacker Drive,  
Suite 500  
Chicago, IL 60606  
(312) 939-1000

4/21/2008 12:50:17 PM  
G:\17049\_069\structures\2819\_w\_r\dwg\22\_pier.dwg

DESIGNED AEU  
CHECKED JPB  
DRAWN AEU  
CHECKED JPB