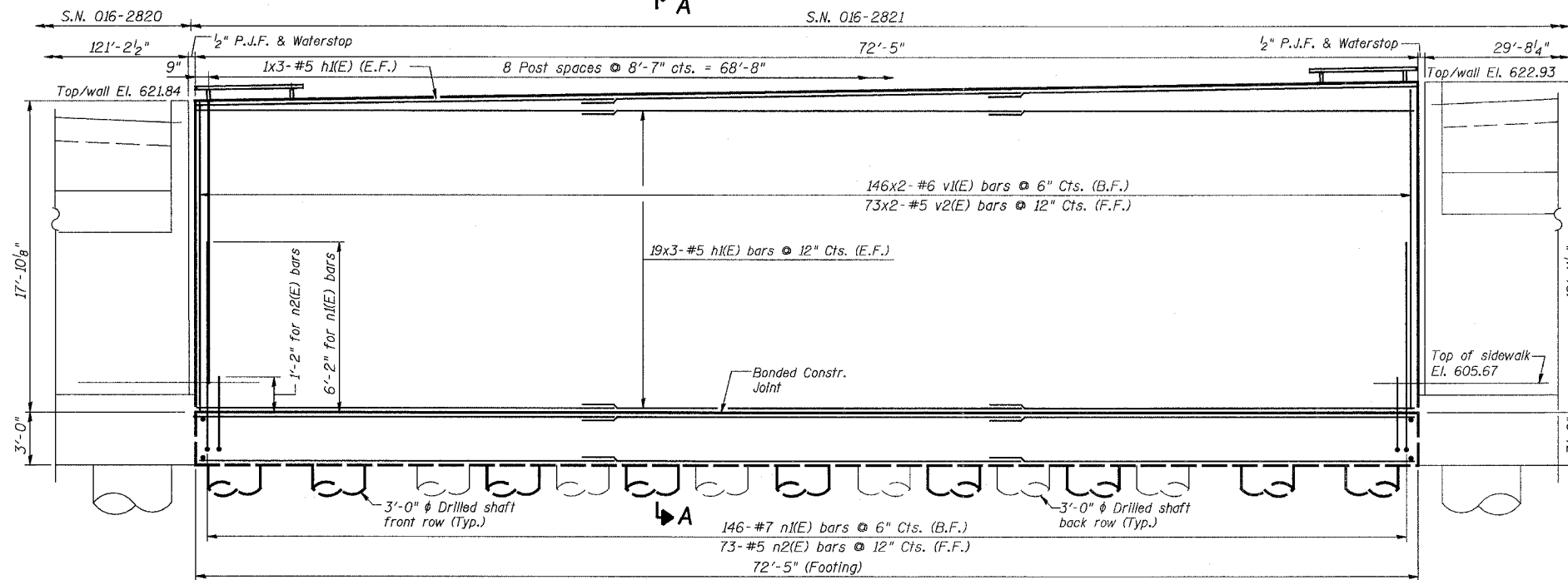


STATE OF ILLINOIS
DEPARTMENT OF TRANSPORTATION

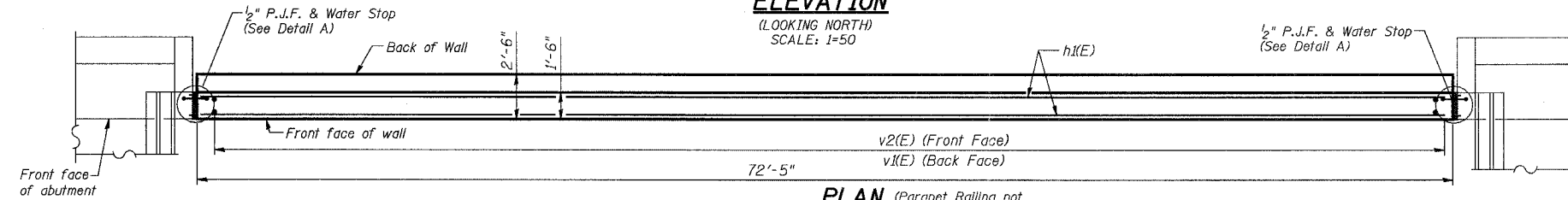
ROUTE NO.	SECTION	COUNTY	TOTAL SHEETS	SHEET NO.
F.A.P. 351	2008-001VB	COOK	579	445
FED. ROAD DIST. NO. 7	ILLINOIS	FED. AID PROJECT-		

SHEET NO. 54
54 SHEETS

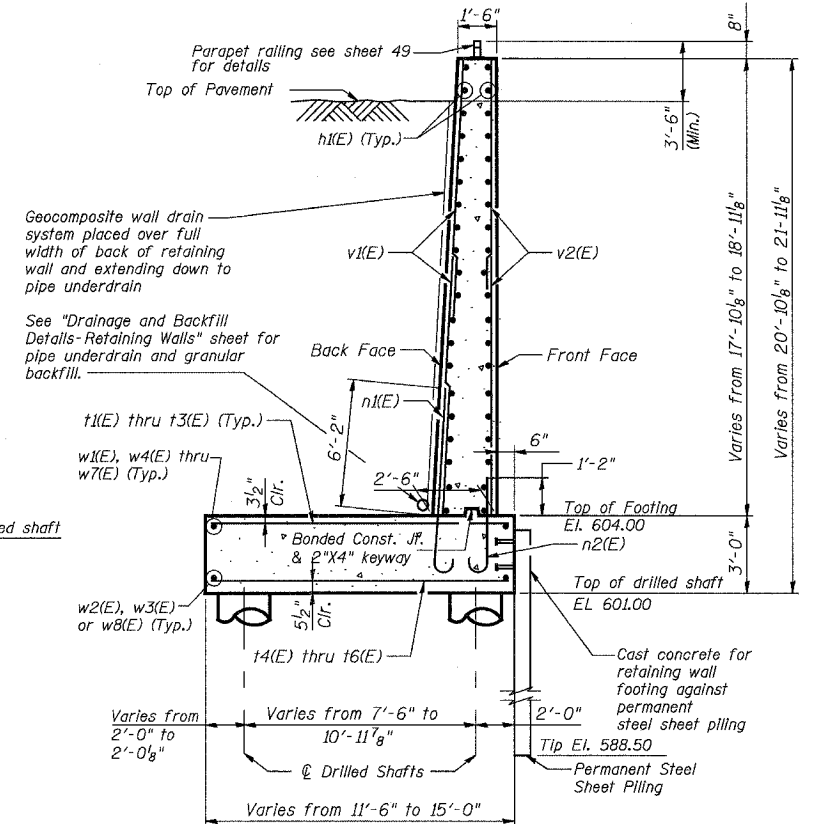
CONTRACT NO. 60E10



ELEVATION
(LOOKING NORTH)
SCALE: 1=50



PLAN (Parapet Railing not shown for clarity)
SCALE: 1=50



SECTION A-A
SCALE: 1/4"=1'-0"

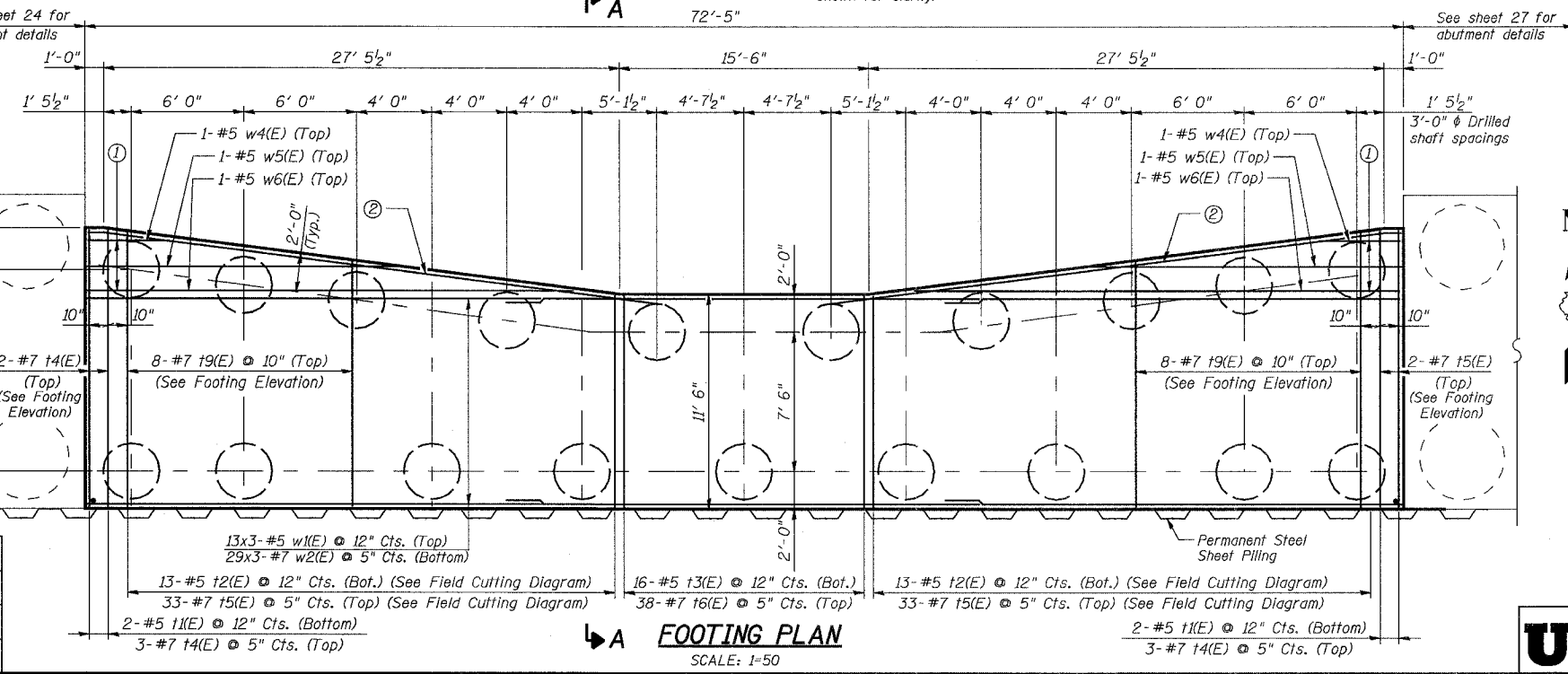
- ① 4-#7 w3(E) bars @ 5" Cts. (Bottom) (See Field Cutting Diagram)
- ② 1-#5 w7(E) bar (Top) (Bend in Field)
1-#7 w8(E) bar (Bottom) (Bend in Field)

Notes:

1. Work this Sheet with Sheets 36 and 37.
2. Reinforcement bars designated (E) shall be epoxy coated.
3. For Bill of Materials and bar bend details see Sheet 37.
4. For Detail A, footing elevation, permanent steel sheet piling attachment details and drilled shaft details see Sheet 36.
5. Min. lap length for #5 bar is 2'-2", #6 bar is 2'-7" and #7 bar is 3'-10".
6. Bars indicated thus 20 x 3-#15 etc. indicates 20 lines of bars with 3 lengths per line.
7. If the Contractor elects to use cast-in-place anchors device for Parapet Railing post, then the Contractor must coordinate fabrication of the Parapet Railing with respect to as-built locations of the cast-in-place anchors. The Contractor shall correct any errors in fabrication of Parapet Railing with respect to as-built locations of cast-in-place anchors at his own expense.

3/13/2008 2:52:45 PM g:\17045\069\structures\2820_w\w\dwg\refinal.plans\35-north-retain-wall.dwg

DESIGNED	EV
CHECKED	NPP
DRAWN	EV
CHECKED	NPP



FOOTING PLAN
SCALE: 1=50

URS
100 South Wacker Drive,
Suite 500
Chicago, IL 60606
(312) 939-1000

REVISIONS	
NAME	DATE

ILLINOIS DEPARTMENT OF TRANSPORTATION
US RTE 6 FROM I-294 TO IL RTE 1
NORTH RETAINING WALL
SN 016-2821
STRUCTURES FOR CN INTERMODAL
YARD VEHICLES OVER U.S. RTE. 6 (159TH STREET)
STATION 95+02.14 STRUCTURE NOS. 016-2820 & 016-2821
SCALE: AS NOTED DATE: 10/2/2007