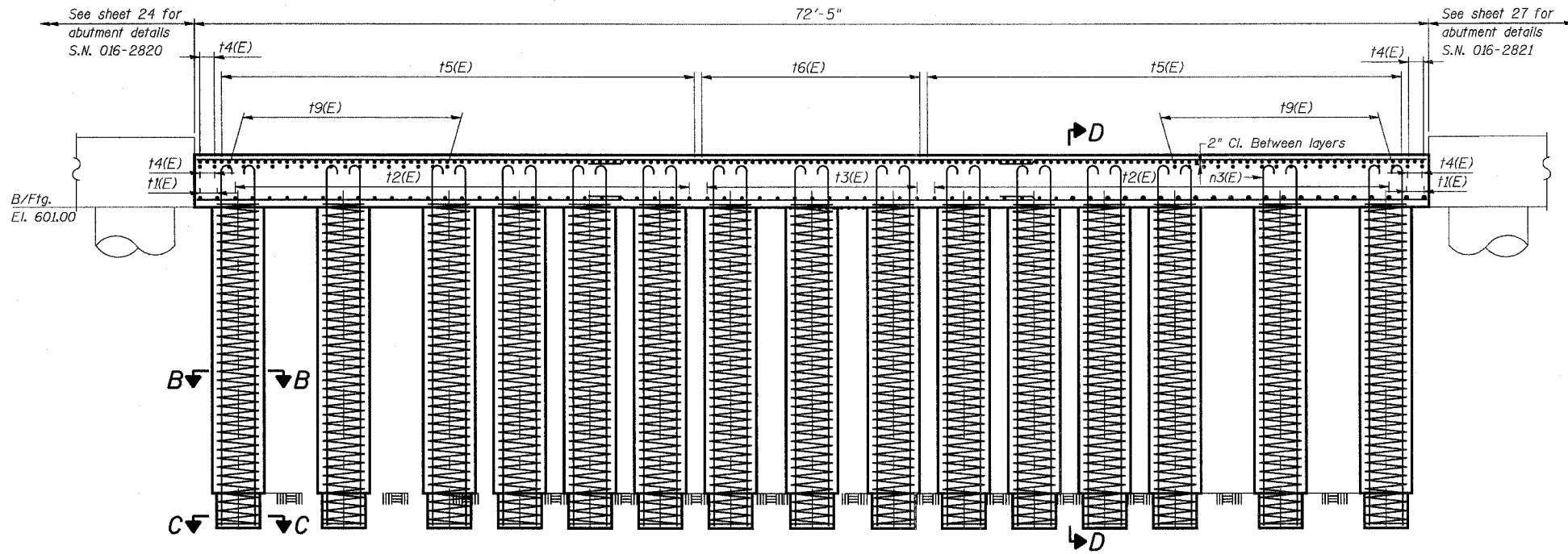


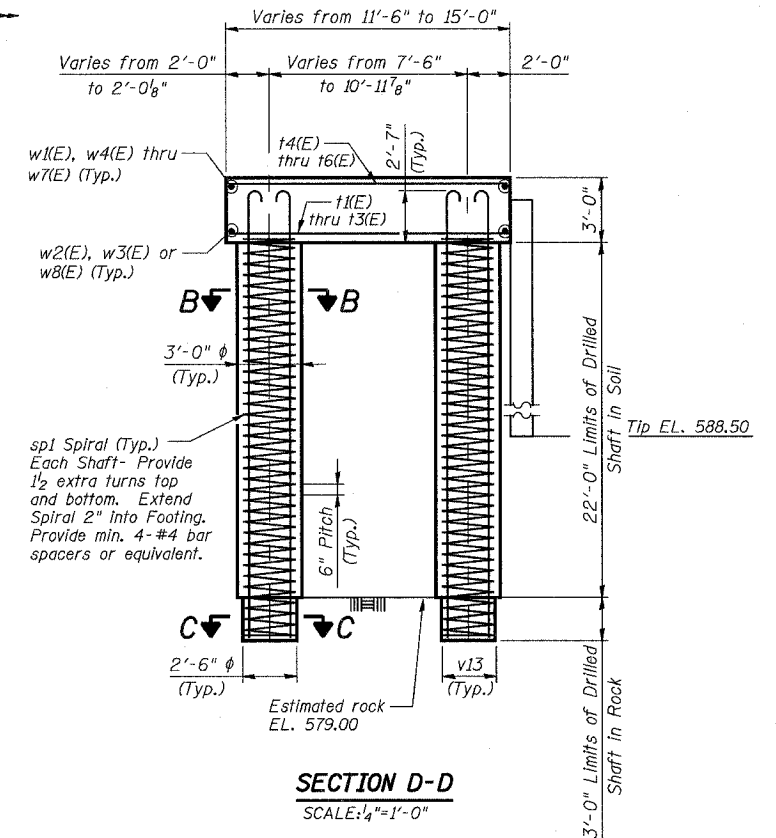
STATE OF ILLINOIS
DEPARTMENT OF TRANSPORTATION

ROUTE NO.	SECTION	COUNTY	TOTAL SHEETS	SHEET NO.
F.A.P. 351	2008-001VB	COOK	579	446
FED. ROAD DIST. NO. 7 ILLINOIS		FED. AID PROJECT-		
CONTRACT NO. 60E10				

SHEET NO. 36
54 SHEETS



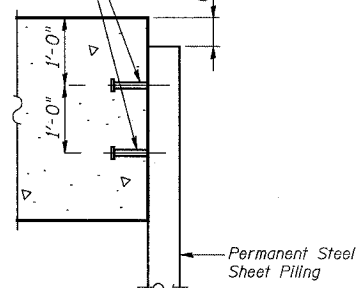
FOOTING ELEVATION
SCALE: 1/4"=1'-0"



SECTION D-D
SCALE: 1/4"=1'-0"

Drilled Shafts shall be drilled to Elevation shown. Quantities and Detailing are for the estimated Elevations shown on the Plans. The actual conditions encountered in each Shaft may differ and the Drilled Shaft and Reinforcement Quantities shall be adjusted accordingly as directed by the Engineer and paid for at the corresponding Unit Bid Price.

3/4" φ x 8" Granular or solid flux filled headed studs conforming to Article 1006.32 of the Std. Spec.'s automatically end welded at 12" alternate centers. Cost included with Permanent Steel Sheet Piling.

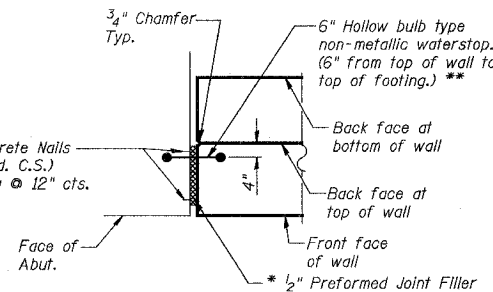


PERMANENT STEEL SHEET PILING ATTACHMENT TO FOOTING
Required Minimum Effective Section Modulus of Permanent Sheet Piling is 6.10 in.³/ft.
SCALE: 3/4"=1'-0"

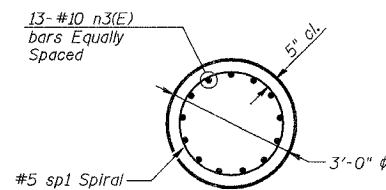
* Cost included with Concrete Structures.

** Contractor to provide protective cover for Water Seal subject to the approval of the Engineer.

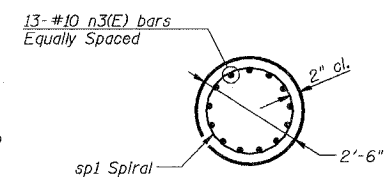
* Concrete Nails (Flat Hd. C.S.) 1" Long @ 12" cts.



DETAIL A
SCALE: N.T.S.



SECTION B-B
(19 Required)
SCALE: N.T.S.



SECTION C-C
(19 Required)
SCALE: N.T.S.

Notes:

1. Work this Sheet with Sheets 35 and 37.
2. Reinforcement bars designated (E) shall be epoxy coated.
3. For Bill of Materials and bar bend details, see Sheet 37.
4. See Sheet 35 for footing plan.

Min. Lap Splice
For Spiral = 2'-0"

DESIGNED	EV
CHECKED	NPP
DRAWN	EV
CHECKED	NPP

URS
100 South Wacker Drive,
Suite 500
Chicago, IL 60606
(312) 939-1000

REVISIONS	
NAME	DATE

ILLINOIS DEPARTMENT OF TRANSPORTATION
US RTE 6 FROM I-294 TO IL RTE 1
NORTH RETAINING WALL
FOUNDATION SN 016-2821
STRUCTURES FOR CN INTERMODAL
YARD VEHICLES OVER U.S. RTE. 6 (159TH STREET)
STATION 95+02.14 STRUCTURE NOS. 016-2820 & 016-2821
SCALE: AS NOTED DATE: 2/21/2008

3/13/2008 2:52:46 PM c:\17049\069\structures\2820_w_hwl\dwg\prelim\plans\36-north_retain_wall12.dwg