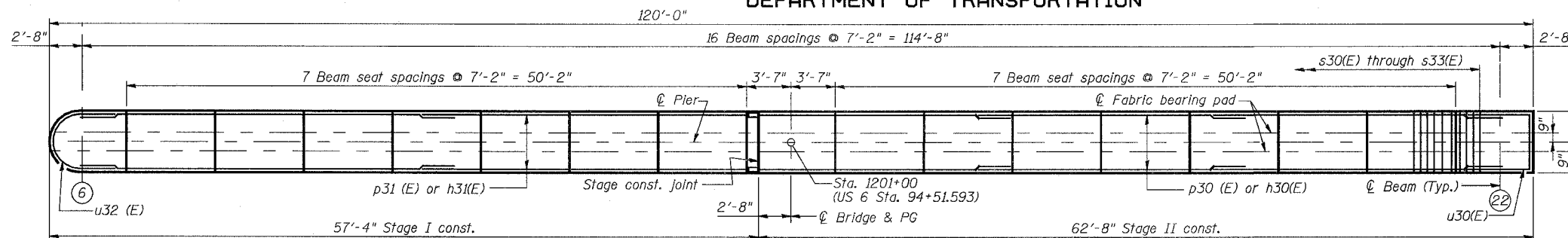


STATE OF ILLINOIS
DEPARTMENT OF TRANSPORTATION

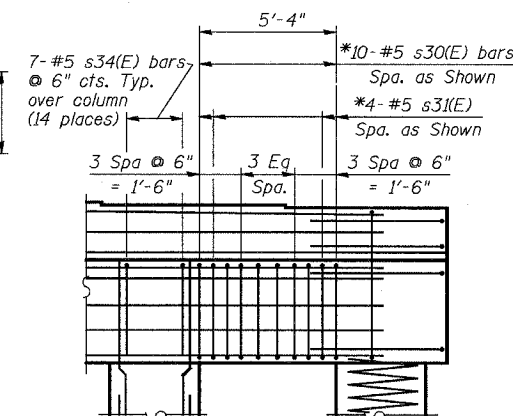
ROUTE NO.	SECTION	COUNTY	TOTAL SHEETS	SHEET NO.
F.A.P. 351	2008-001VB	COOK	579	451
FED. ROAD DIST. NO. 7 ILLINOIS		FED. AID PROJECT-		

SHEET NO. 41
54 SHEETS

CONTRACT NO. 60E10

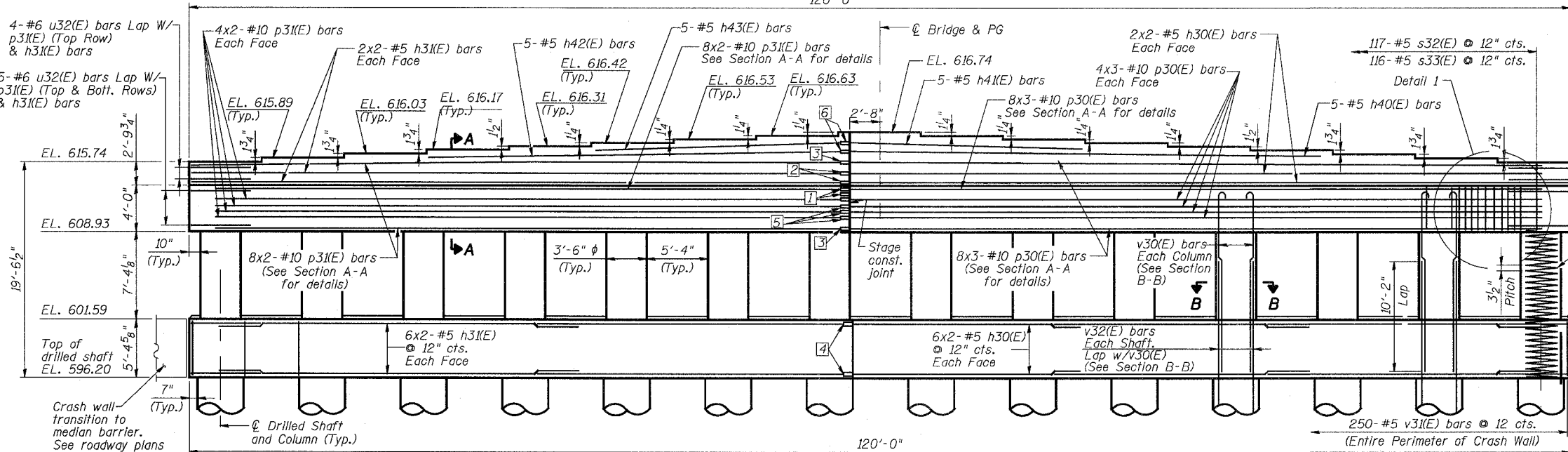


TOP PLAN SCALE: 3/16"=1'-0"
(Columns below not shown for clarity)

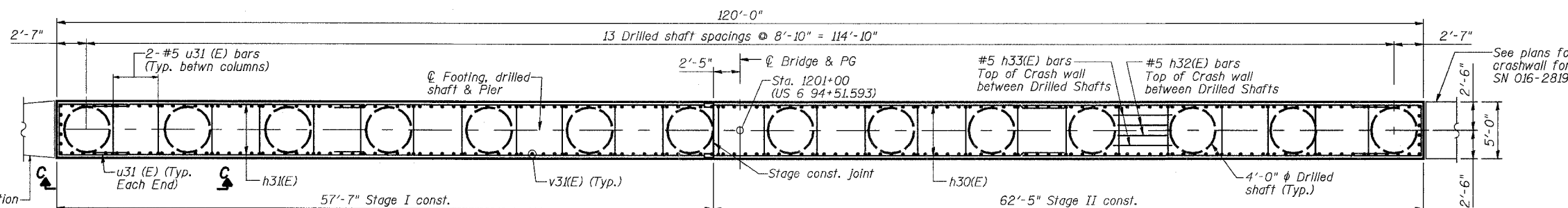


DETAIL 1
N.T.S.

* Cap Reinforcement Typical between Column (13 places)



ELEVATION SCALE: 3/16"=1'-0"
(Looking south)



CRASH WALL PLAN SCALE: 3/16"=1'-0"

- 1 4-Bar Splicer (E) for #10 bars See Sheet 27 of 30 for details.
- 2 2-Bar Splicer (E) for #5 bars Each Face See Sheet 27 for details.
- 3 8-Bar Splicer (E) for #10 bars See Sheet 27 for details.
- 4 6-Bar Splicer (E) for #5 bars Each Face See Sheet 27 for details.
- 5 4-Bar Splicer (E) for #10 bars Each Face See Sheet 27 for details.
- 6 5-Bar Splicer (E) for #5 bars Each Face

Notes:

1. Reinforcement Bars designated (E) shall be epoxy coated.
2. For Bill of Materials, bar bend details, End View, Drilled Shaft details, Sections A-A, B-B and C-C see Sheet 42.
3. The minimum Lap Length for #10 bars is 8'-2", for #5 is 2'-5".
4. Cast the steps monolithically with cap.
5. Bars indicated thus 4x3 - #10 etc. indicates 4 lines of bars with 3 lengths per line.
6. See Sheet 21 for locations of anchor bolts and Sheet 47 for details of anchor bolts.

DESIGNED	EV
CHECKED	NPP
DRAWN	EV
CHECKED	NPP

REVISIONS	
NAME	DATE

ILLINOIS DEPARTMENT OF TRANSPORTATION
US RTE 6 FROM I-294 TO IL RTE 1
PIER SN 016-2820

STRUCTURES FOR CN INTERMODAL
YARD VEHICLES OVER U.S. RTE. 6 (159TH STREET)
STATION 95+02.14 STRUCTURE NOS. 016-2820 & 016-2821
SCALE: AS NOTED DATE: 2/21/2008

URS
100 South Wacker Drive,
Suite 500
Chicago, IL 60606
(312) 939-1000

3/13/2008 2:52:48 PM I:\2004\06\structures\2820_w_hwl.dwg\pref\ref\plans\41-pier-2820.dwg