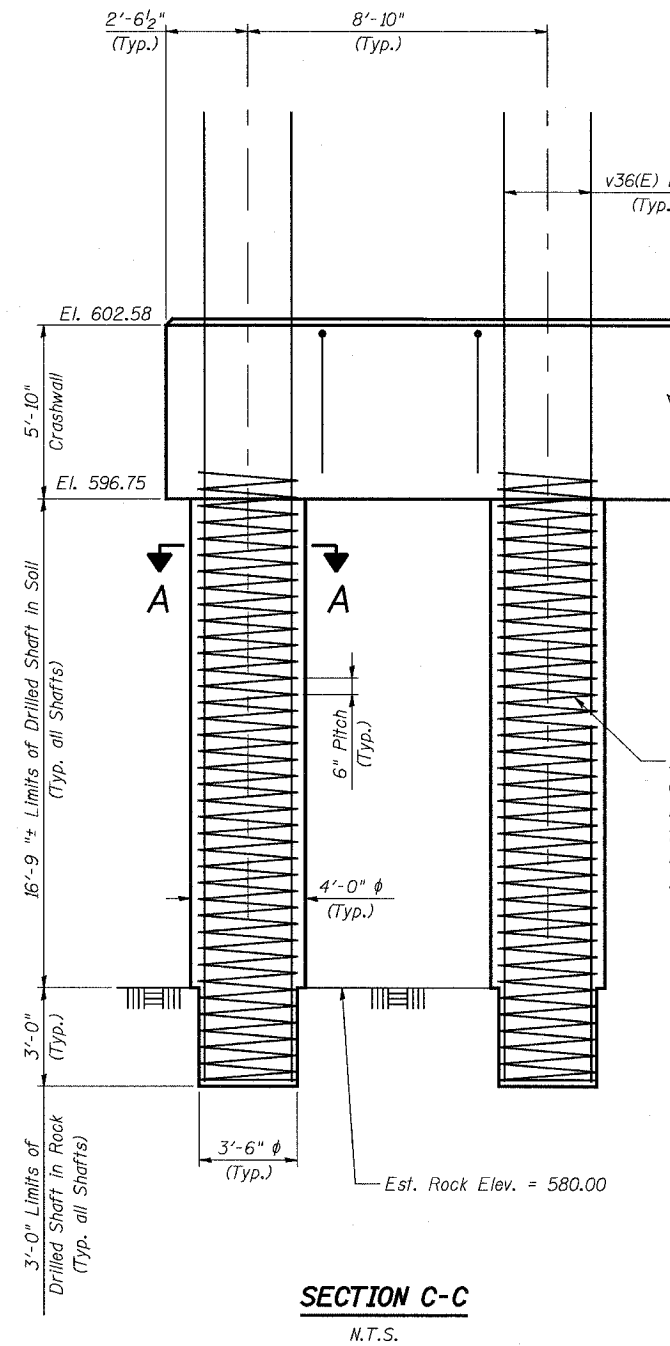


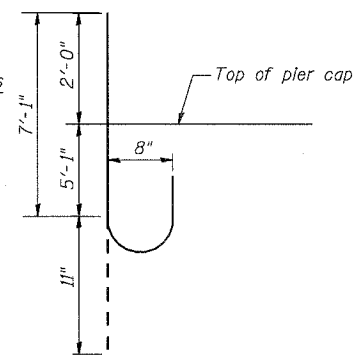
STATE OF ILLINOIS
DEPARTMENT OF TRANSPORTATION

ROUTE NO.	SECTION	COUNTY	TOTAL SHEETS	SHEET NO.
F.A.P. 351	2008-001VB	COOK	579	454
FED. ROAD DIST. NO. 7		ILLINOIS	FED. AID PROJECT-	
CONTRACT NO. 60E10				

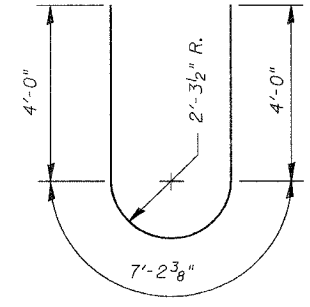
SHEET NO. 44
54 SHEETS



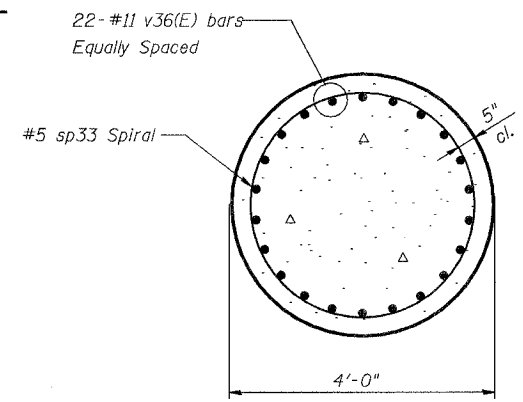
SECTION C-C
N.T.S.



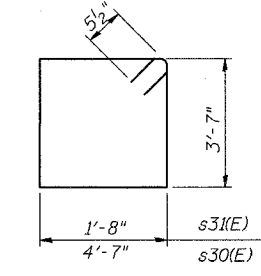
BAR j(E)



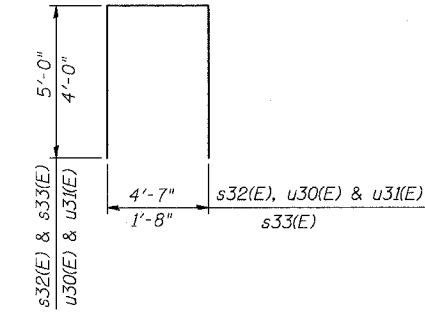
BAR u32(E)



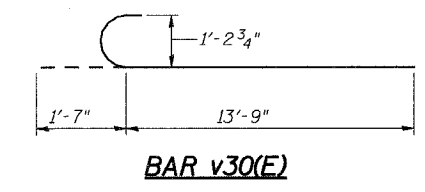
SECTION A-A
SCALE: 3/4"=1'-0"
(4 Required)



BARS s30(E) & s31(E)



**BARS s32(E), s33(E),
u30(E) & u31(E)**



BAR v30(E)

PIER BILL OF MATERIAL

Bar	No.	Size	Length	Shape
h34(E)	18	#5	26'-0"	—
h35(E)	6	#5	3'-4"	—
h33(E)	6	#5	3'-8"	—
p32(E)	32	#10	26'-0"	—
s30(E)	27	#5	17'-3"	□
s31(E)	12	#5	11'-5"	□
s32(E)	27	#5	14'-7"	□
s33(E)	27	#5	11'-8"	□
s34(E)	28	#5	11'-9"	□
sp32(E)	4	#5	13'-3"	WWW
sp33	4	#5	20'-0"	WWW
u30(E)	9	#6	12'-7"	—
u31(E)	20	#5	12'-7"	—
u32(E)	9	#6	15'-3"	—
v30(E)	88	#11	15'-4"	U
v35(E)	66	#5	5'-5"	—
v36(E)	88	#11	33'-0"	—
j(E)	26	#8	8'-0"	U
Structure Excavation			Cu Yd	45
Concrete Structures			Cu Yd	78.9
Reinforcement Bars			Pound	1,620
Reinforcement Bars, Epoxy Coated			Pound	33,440
Non-Special Waste Disposal			Cu. Yd.	76.0
Drilled Shaft in Soil			Cu. Yd.	32
Drilled Shaft in Rock			Cu. Yd.	5

Notes:

1. Reinforcement Bars designated (E) shall be epoxy coated.
2. Length of Spiral given is height of Spiral. Weight includes weight of spacers for Spiral.
3. Drilled Shafts shall be drilled to Elevation shown. Quantities and Detailing are for the estimated Elevations shown on the Plans. The actual conditions encountered in each Shaft may differ and the Drilled Shaft and Reinforcement Quantities shall be adjusted accordingly as directed by the Engineer and paid for at the corresponding Unit Bid Price.
4. See Sheet 43 for location of Section C-C.
5. Tops of the drilled shafts and their associated reinforcing steel shall be located in accordance with tolerances required for the construction of the pier columns above them.
6. See Sheet 21 for locations of j(E) bars.

3/13/2008 2:52:50 PM
G:\17049\069\structures\2820.w.hwl\dwg\prefinal\plans\44-pier-2821det.dwg

DESIGNED	EV
CHECKED	NPP
DRAWN	EV
CHECKED	NPP

URS
100 South Wacker Drive,
Suite 500
Chicago, IL 60606
(312) 939-1000

REVISIONS	
NAME	DATE

ILLINOIS DEPARTMENT OF TRANSPORTATION
US RTE 6 FROM I-294 TO IL RTE 1
PIER DETAILS SN 016-2821

STRUCTURES FOR CN INTERMODAL
YARD VEHICLES OVER U.S. RTE. 6 (159TH STREET)
STATION 95+02.14 STRUCTURE NOS. 016-2820 & 016-2821
SCALE: AS NOTED DATE: 2/21/2008