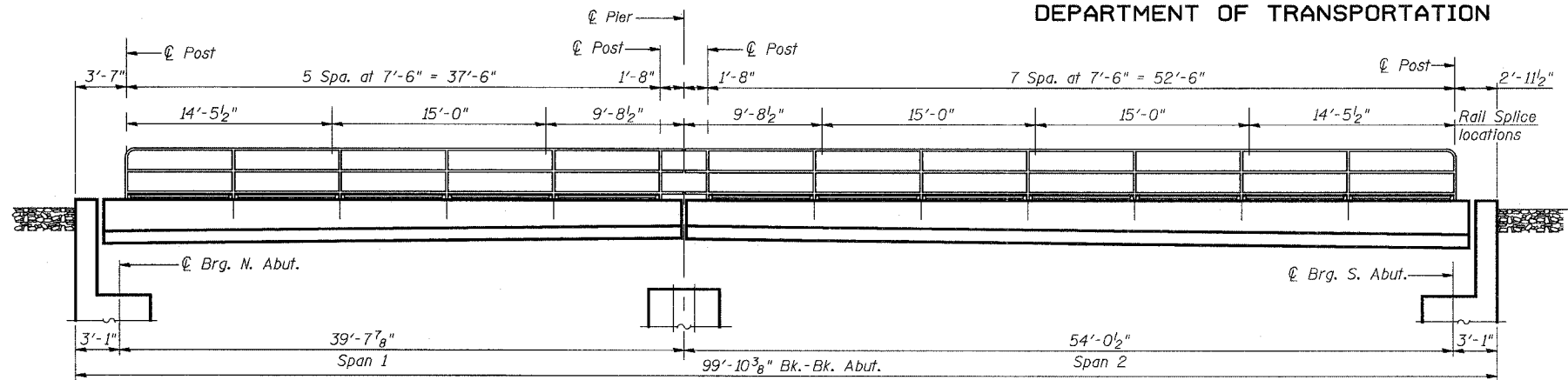


STATE OF ILLINOIS
DEPARTMENT OF TRANSPORTATION

ROUTE NO.	SECTION	COUNTY	TOTAL SHEETS	SHEET NO.
F.A.P. 351	2008-001VB	COOK	579	472
FED. ROAD DIST. NO. 7 ILLINOIS		FED. AID PROJECT-		

SHEET NO. 8
26 SHEETS

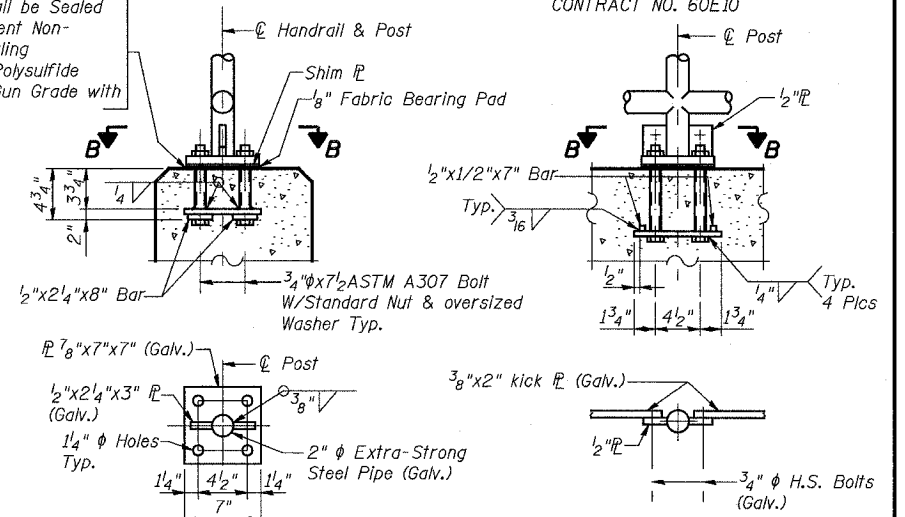
CONTRACT NO. 60E10



ELEVATION OF HANDRAIL ALONG BRIDGE

(Looking East)
(West Parapet Only)

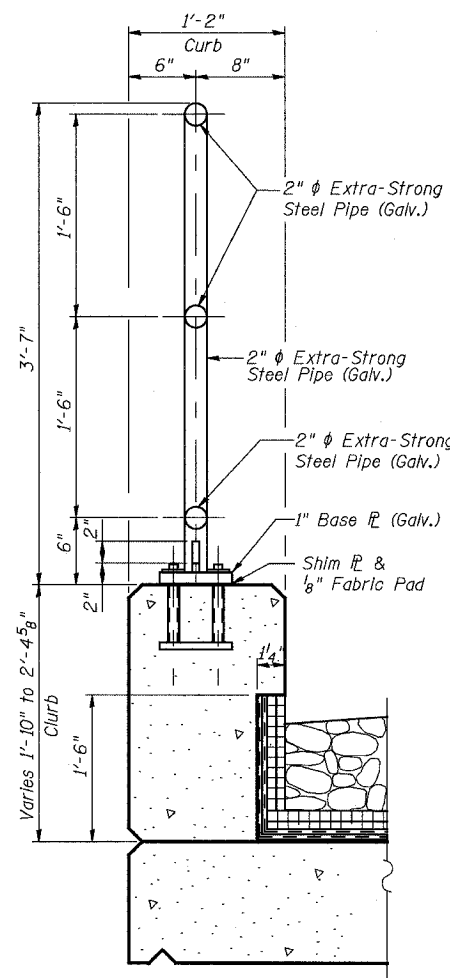
Base of Post Shall be Sealed with Two Component Non-Staining Gray Sealing Compounds with Polysulfide Liquid Polymers-Gun Grade with Primer.



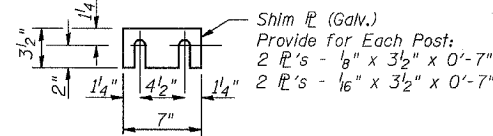
BASE PLATE DETAIL

SECTION B-B

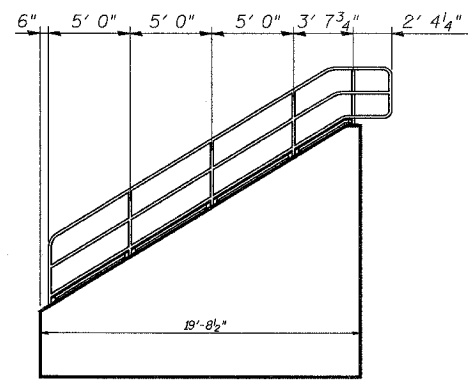
ANCHOR BOLT DETAILS



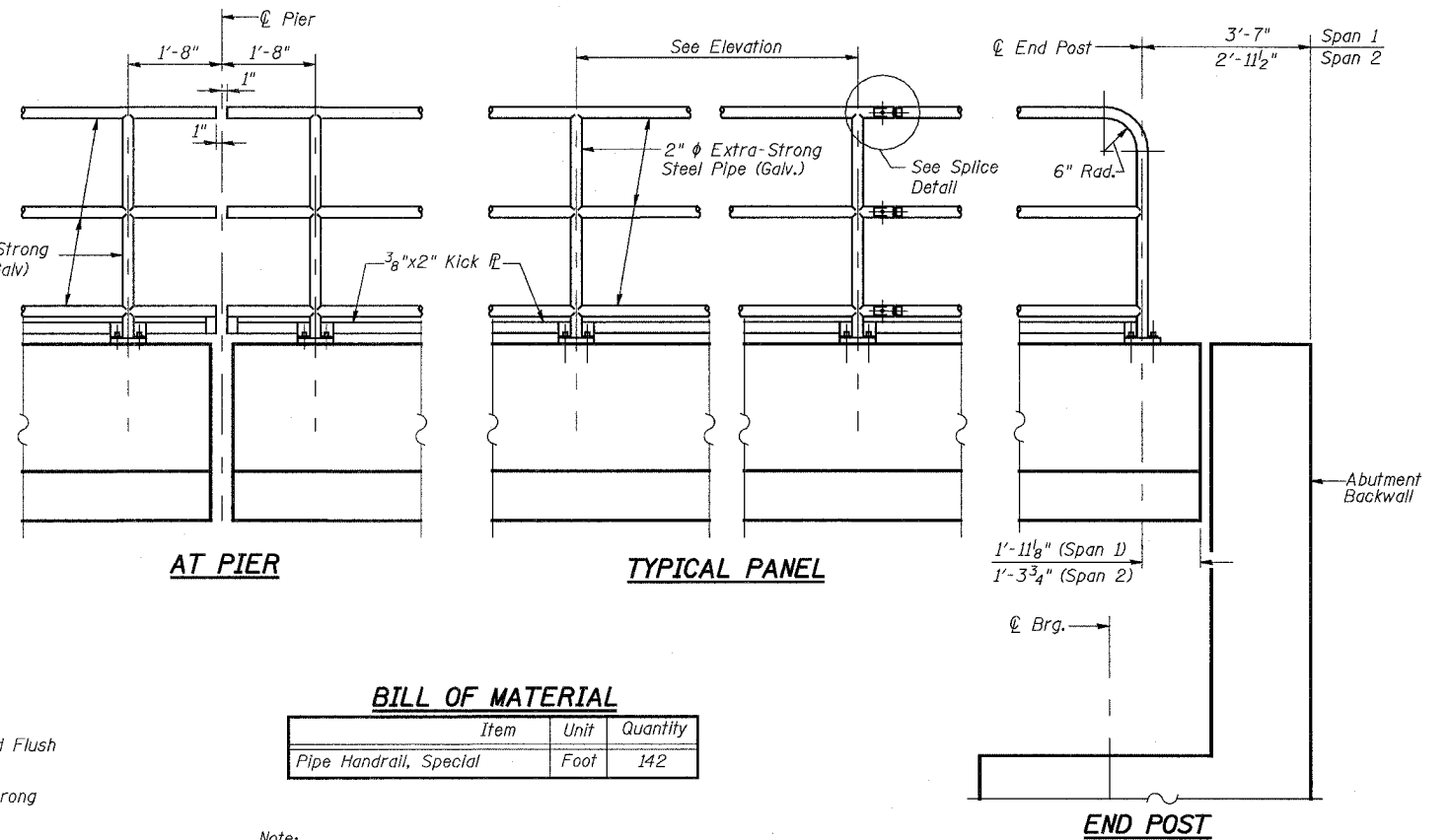
TYPICAL CURB SECTION ON DECK



SHIM PLATE



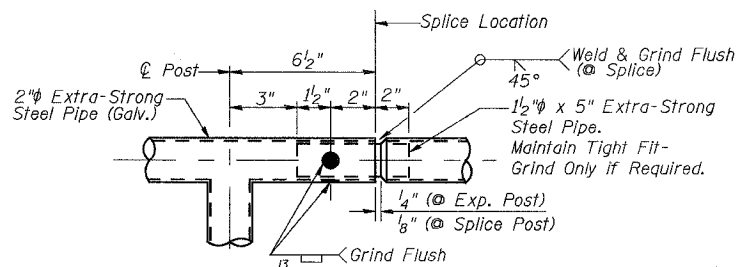
**SOUTH EAST RAILING ON WINGWALL
NORTH EAST MIRROR IMAGE**



BILL OF MATERIAL

Item	Unit	Quantity
Pipe Handrail, Special	Foot	142

Note:
All bolts, nuts & washers shall be galvanized according to AASHTO M 232
All post, pipe, pipe splices and base and shim plates shall be galvanized after shop fabrication according to AASHTO M 111 and ASTM A 385. Galvanized pipe shall not be painted.



SPLICE DETAIL

3/13/2008 1:26:46 PM

cs:\17049_069\structures\2822_s_rr\dwg\08_handrail.dwg

DESIGNED	MDS
CHECKED	JPB
DRAWN	MDS
CHECKED	JPB

REVISIONS	
NAME	DATE

ILLINOIS DEPARTMENT OF TRANSPORTATION
US RTE 6 FROM I-294 TO IL RTE 1
HANDRAIL DETAILS
CN THOROUGHFARE TRACK
BRIDGE 20.6E OVER U.S. RTE. 6 (159TH STREET)
STATION 96+36.66 STRUCTURE NO. 016-2822
SCALE: N.T.S. DATE: 2/21/2008

URS
100 South Wacker Drive,
Suite 500
Chicago, IL 60606
(312) 939-1000