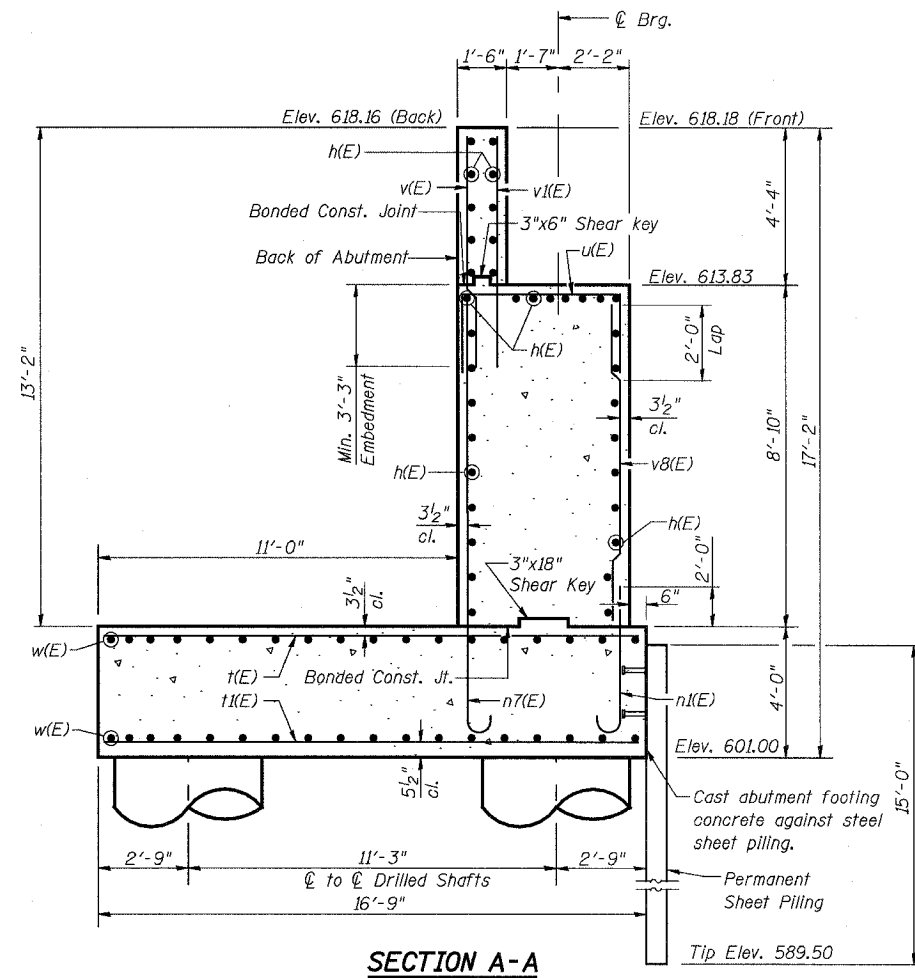


STATE OF ILLINOIS
DEPARTMENT OF TRANSPORTATION

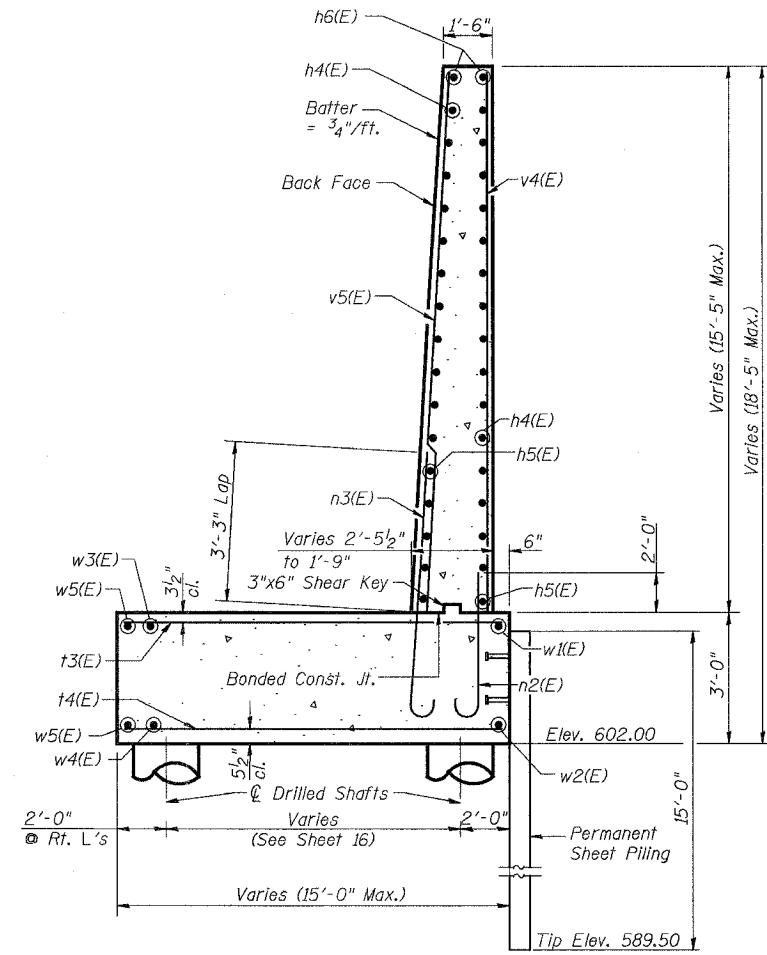
ROUTE NO.	SECTION	COUNTY	TOTAL SHEETS	SHEET NO.
F.A.P. 351	2008-001VB	COOK	579	478
FED. ROAD DIST. NO. 7		ILLINOIS	FED. AID PROJECT-	

CONTRACT NO. 60E10

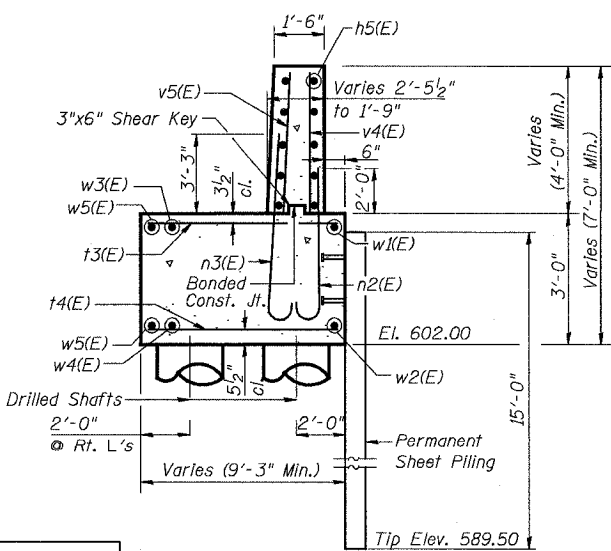
SHEET NO. 14
26 SHEETS



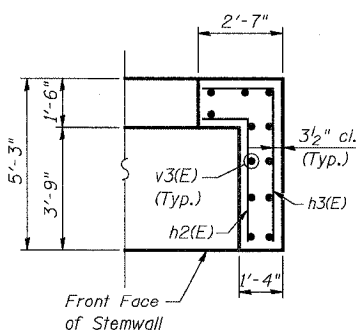
SECTION A-A



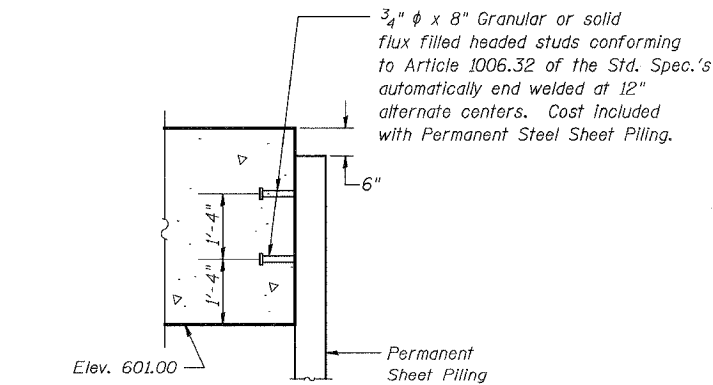
SECTION B-B



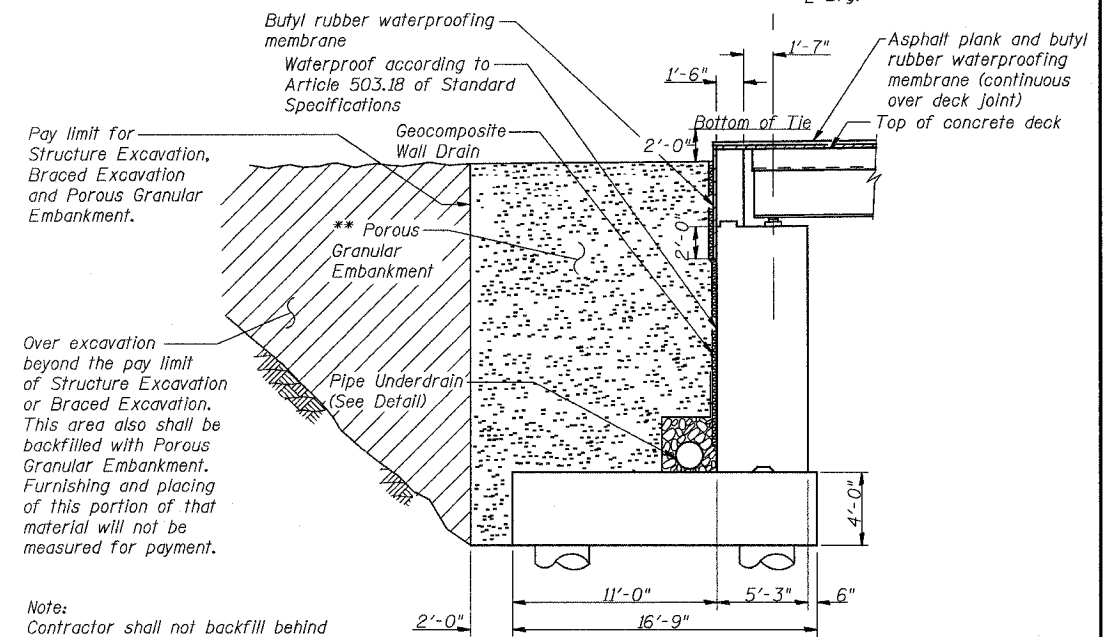
SECTION C-C



SECTION D-D

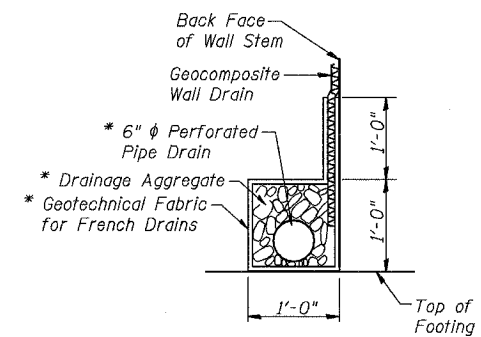


PERMANENT SHEET PILING ATTACHMENT TO FOOTING
Required Minimum Effective Section Modulus of Permanent Sheet Piling is 5.83 in.³/ft.



DRAINAGE & BACKFILL DETAIL

** Excavation for placing Porous Granular Embankment is included in cost of Braced Excavation & Structure Excavation
Porous Granular Embankment shall be compacted to 95% Modified Proctor Density and its coarse aggregate gradation shall be CA 18.



PIPE UNDERDRAIN DETAIL

* Included in cost of Pipe Underdrain For Structures 6"

NOTES:

1. Reinforcement bars designated (E) shall be epoxy coated.
2. Work this sheet with Sheets 13 & 15 through 17.
3. Space reinforcement in seat to miss anchor bolts.
4. See Sheet 17 for Bill of Materials.
5. See Sheet 24 of U.S. 6 Mainline Retaining Walls Along 159th Street plans for Pipe Underdrain Layout and Quantities.

3/13/2008 1:26:49 PM

c:\17049_069\structures\2822_e_rr\dwg\14_n_abut_det.dwg

DESIGNED	MDS
CHECKED	JPB
DRAWN	MDS
CHECKED	JPB

URS
100 South Wacker Drive,
Suite 500
Chicago, IL 60606
(312) 939-1000

REVISIONS	
NAME	DATE

ILLINOIS DEPARTMENT OF TRANSPORTATION
US RTE 6 FROM I-294 TO IL RTE 1
NORTH ABUTMENT-DETAILS I

CN THOROUGHFARE TRACK
BRIDGE 20.6E OVER U.S. RTE. 6 (159TH STREET)
STATION 96+36.66 STRUCTURE NO. 016-2822
SCALE: AS NOTED DATE: 2/21/2008