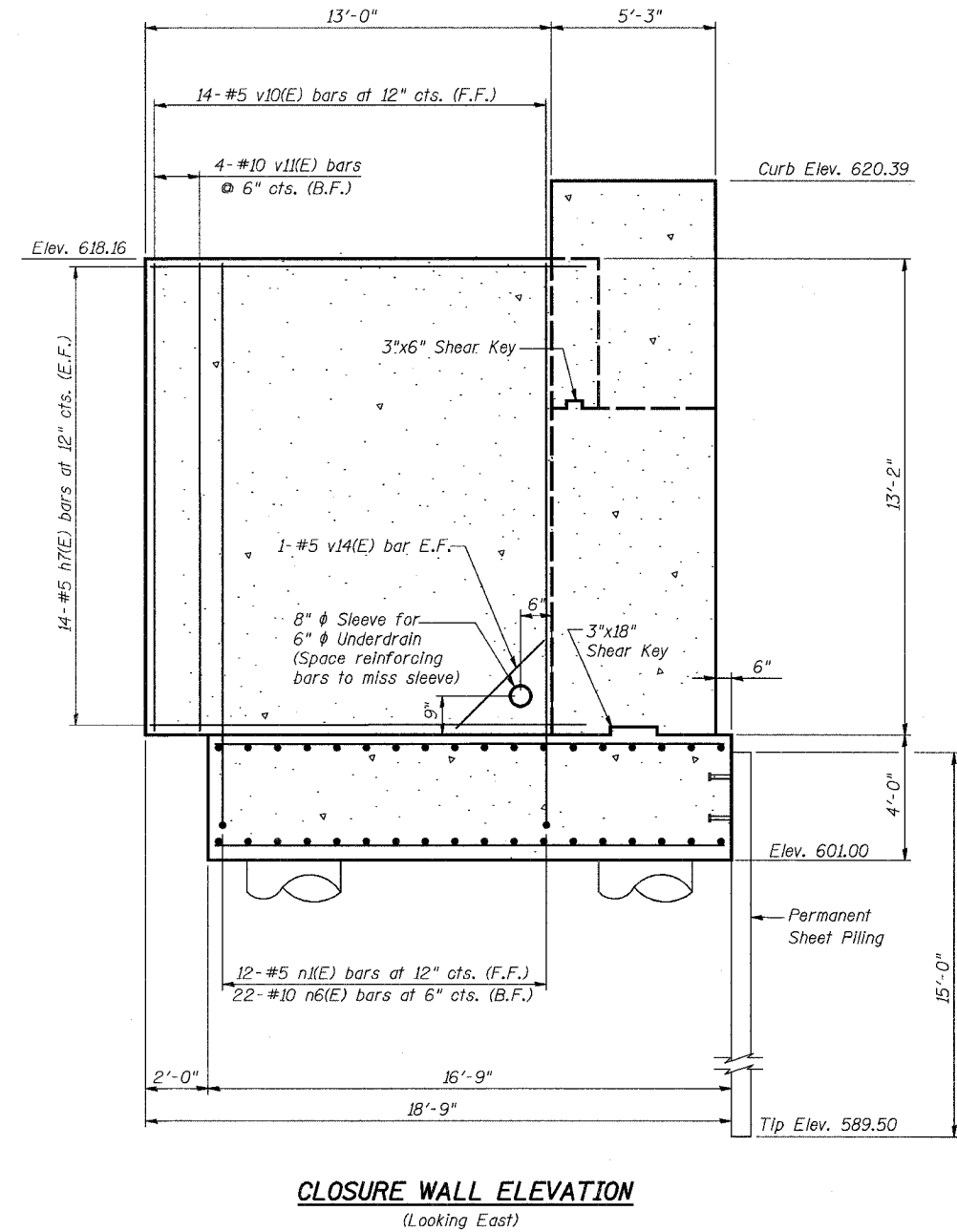
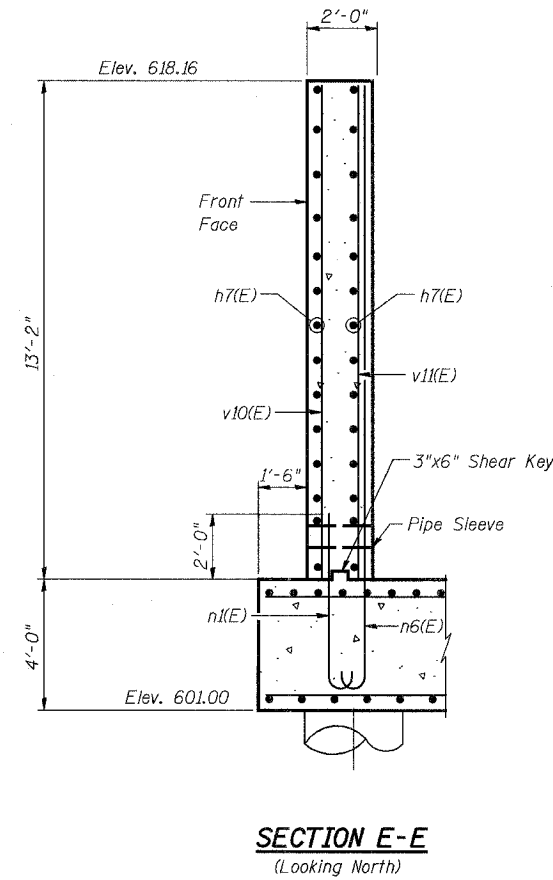
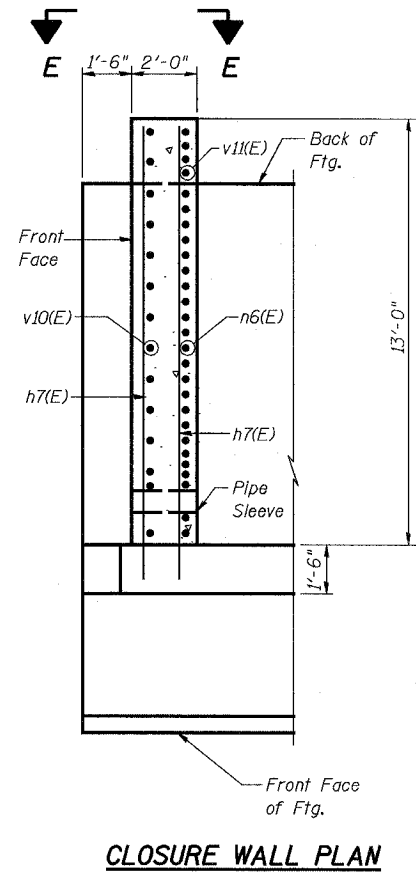


STATE OF ILLINOIS
DEPARTMENT OF TRANSPORTATION

ROUTE NO.	SECTION	COUNTY	TOTAL SHEETS	SHEET NO.
F.A.P. 351	2008-001VB	COOK	579	479
FED. ROAD DIST. NO. 7	ILLINOIS	FED. AID PROJECT-		

CONTRACT NO. 60E10

SHEET NO. 15
26 SHEETS



LEGEND

F.F. - Front Face
B.F. - Back Face
E.F. - Each Face

NOTES:

1. Reinforcement bars designated (E) shall be epoxy coated.
2. Work this sheet with Sheets 13 through 17.
3. See Sheet 17 for Bill of Materials.
4. Cost of pipe sleeve is included with Concrete Structures.

3/13/2008 1:26:50 PM

gs:\17049\069\structures\2822.e-rr\dwg\15.n.abut.det.1.dgn

DESIGNED	MDS
CHECKED	JPB
DRAWN	MDS
CHECKED	JPB

URS
100 South Wacker Drive,
Suite 500
Chicago, IL 60606
(312) 939-1000

REVISIONS	
NAME	DATE

ILLINOIS DEPARTMENT OF TRANSPORTATION
US RTE 6 FROM I-294 TO IL RTE 1
**NORTH ABUTMENT
DETAILS II**
CN THOROUGHFARE TRACK
BRIDGE 20.6E OVER U.S. RTE. 6 (159TH STREET)
STATION 96+36.66 STRUCTURE NO. 016-2822
SCALE: 3/8"=1'-0" DATE: 2/21/2008