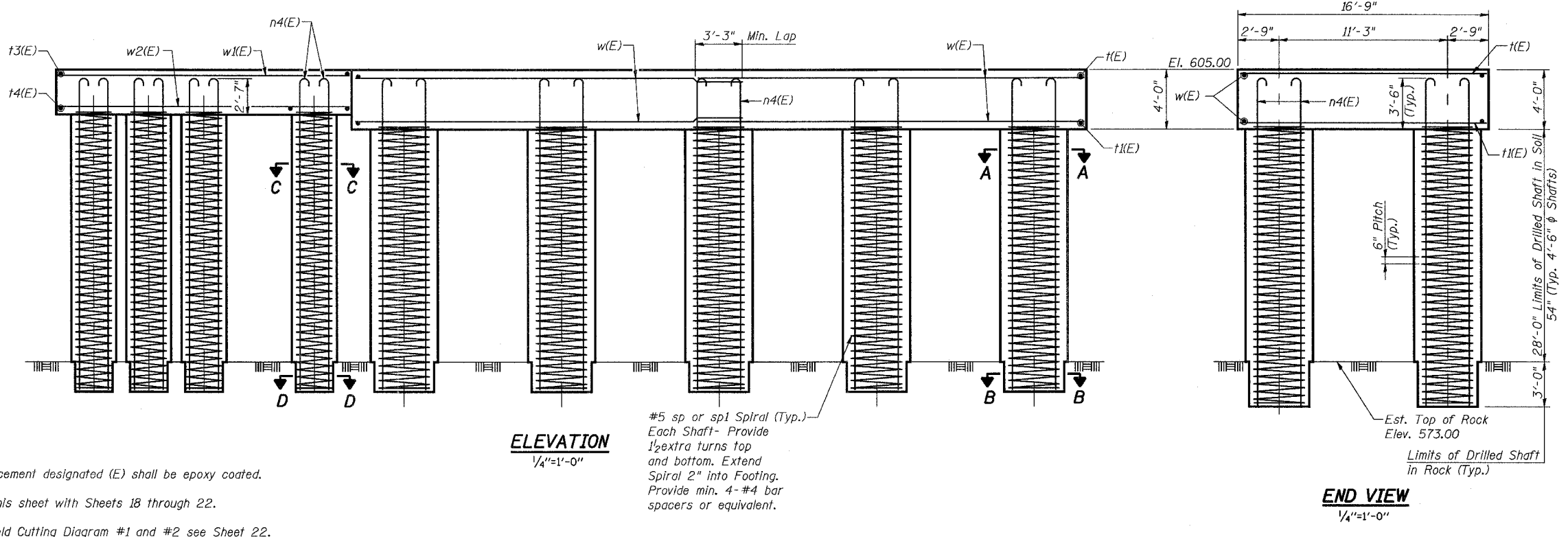
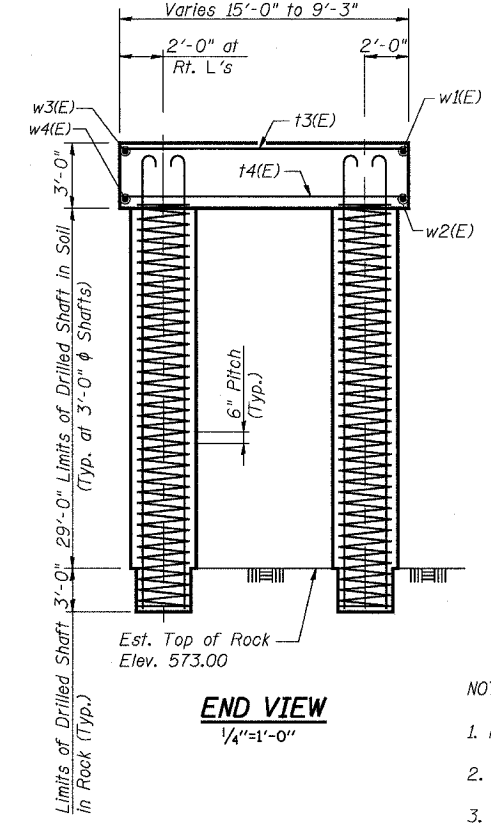
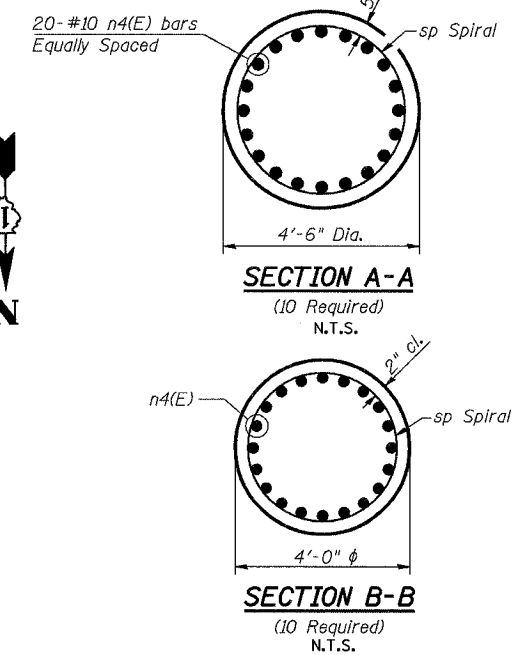
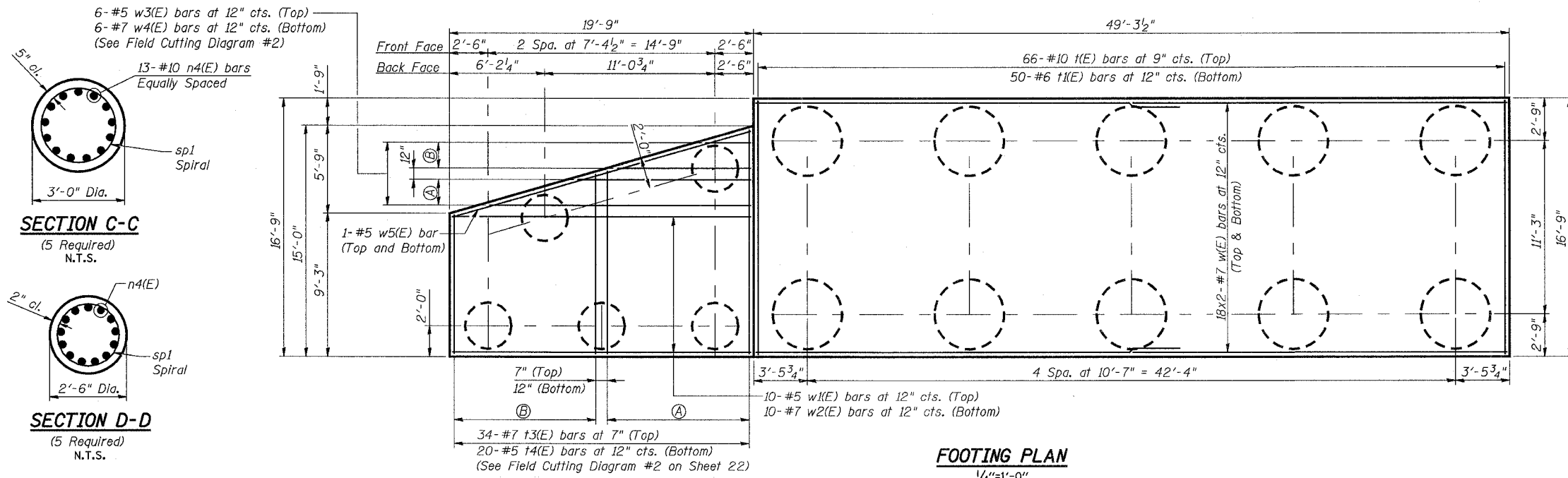


STATE OF ILLINOIS
DEPARTMENT OF TRANSPORTATION

ROUTE NO.	SECTION	COUNTY	TOTAL SHEETS	SHEET NO.
F.A.P. 351	200B-001VB	COOK	579	485
FED. ROAD DIST. NO. 7 ILLINOIS		FED. AID PROJECT-		

SHEET NO. 21
26 SHEETS

CONTRACT NO. 60E10



NOTES:

1. Reinforcement designated (E) shall be epoxy coated.
2. Work this sheet with Sheets 18 through 22.
3. For Field Cutting Diagram #1 and #2 see Sheet 22.
4. Drilled Shafts shall be drilled to Elevation 570.0. Quantities and Detailing are for the estimated Elevations shown on the Plans. The actual conditions encountered in each Shaft may differ and the Drilled Shaft and Reinforcement Quantities shall be adjusted accordingly as directed by the Engineer and paid for at the corresponding Unit Bid Price.
5. Spiral sp outer diameter = 3'-8".
Spiral sp1 outer diameter = 2'-2".

Min. Lap Splice
for Spiral = 2'-0"

3/13/2008 1:26:52 PM c:\17049_069\structures\2822.e_r\dwg\21.s.abut.ftg & shaft.dwg

DESIGNED	MDS
CHECKED	JPB
DRAWN	MDS
CHECKED	JPB

URS
100 South Wacker Drive,
Suite 500
Chicago, IL 60606
(312) 939-1000

REVISIONS	
NAME	DATE

ILLINOIS DEPARTMENT OF TRANSPORTATION
US RTE 6 FROM I-294 TO IL RTE 1
**SOUTH ABUTMENT
FOOTING & DRILLED SHAFTS**
CN THOROUGHFARE TRACK
BRIDGE 20.6E OVER U.S. RTE. 6 (159TH STREET)
STATION 96+36.66 STRUCTURE NO. 016-2822
SCALE: AS NOTED DATE: 2/21/2008