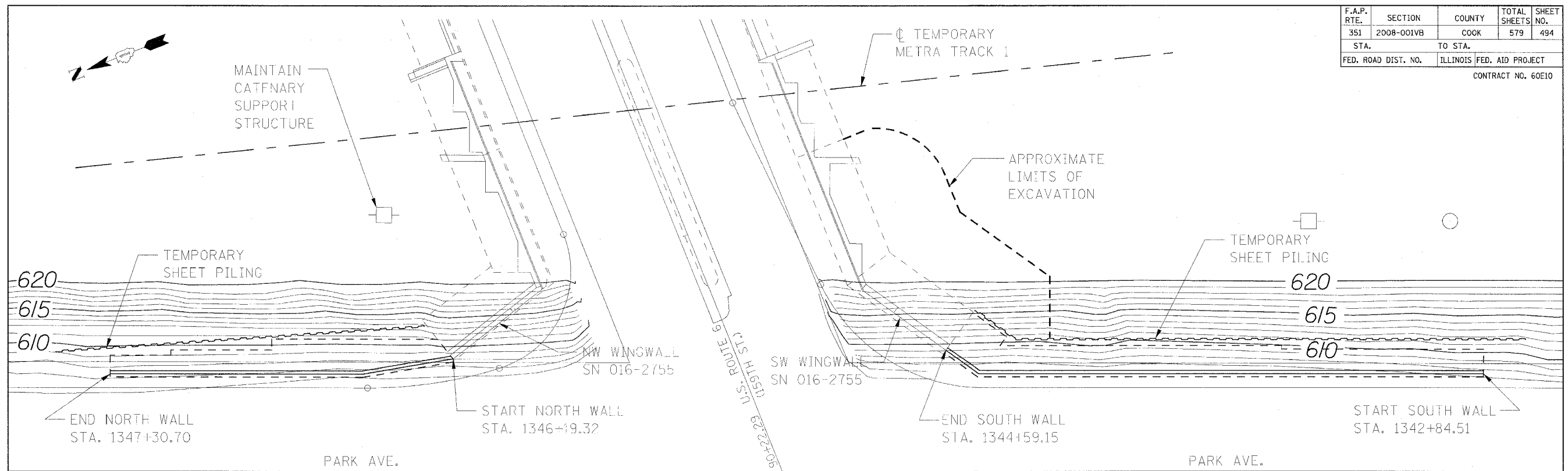
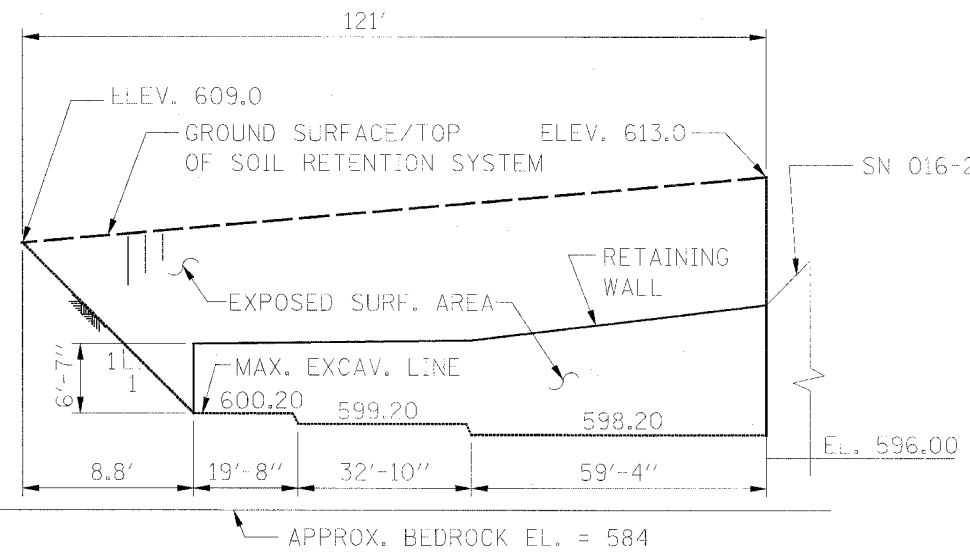


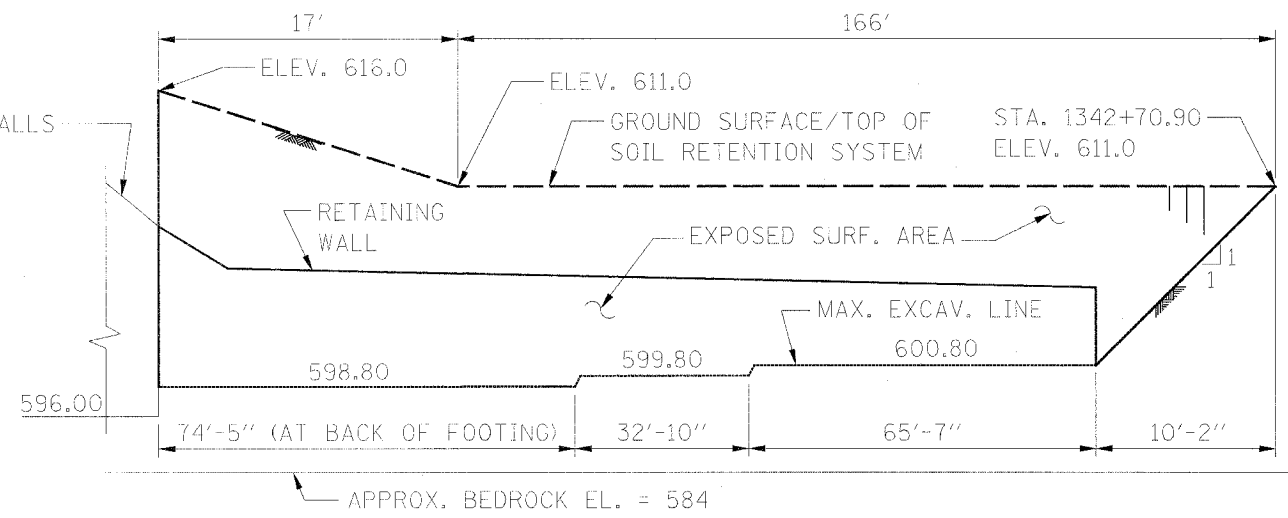
| | | | | |
|---------------------|------------|---------------------------|--------------|-----------|
| F.A.P. RTE. | SECTION | COUNTY | TOTAL SHEETS | SHEET NO. |
| 351 | 2008-001VB | COOK | 579 | 494 |
| STA. | | TO STA. | | |
| FED. ROAD DIST. NO. | | ILLINOIS FED. AID PROJECT | | |
| CONTRACT NO. 60E10 | | | | |



PLAN



ELEVATION - NORTH WALL



ELEVATION - SOUTH WALL

BILL OF MATERIAL

| ITEM | UNIT | QTY. |
|-----------------------|---------|------|
| SOIL RETENTION SYSTEM | Sq. Ft. | 3338 |

NOTES:

- Walls must only be built when Metra is operating on temporary rundound. Cutting into the embankment along Metra tracks will not be permitted when rail loading is present.
- A cantilevered sheet piling design does not appear feasible and additional members or other retention systems may be necessary. The Contractor shall submit a temporary soil retention system design including plan details and calculations for review and acceptance by the Engineer.

SHEET R4 OF R12

| REVISIONS | |
|-----------|------|
| NAME | DATE |
| | |
| | |
| | |
| | |
| | |
| | |

ILLINOIS DEPARTMENT OF TRANSPORTATION
US RTE 6 FROM LEXINGTON AVE TO FISK AVE

PARK AVE. RETAINING WALL
LOCATION PLAN

DRAWN BY MAD
CHECKED BY DEY

DATE 02/21/08