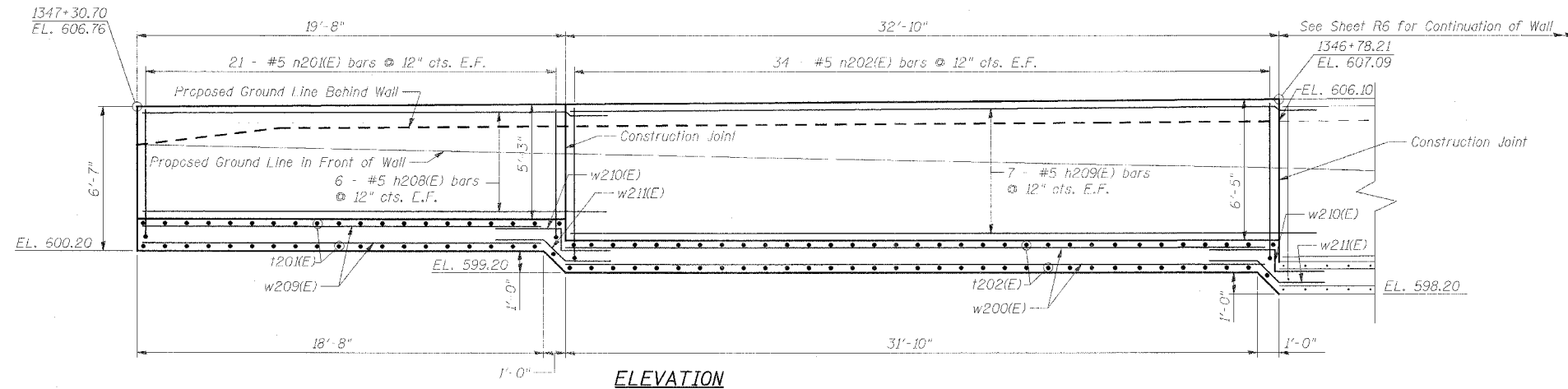


F.A.P. RTE.	SECTION	COUNTY	TOTAL SHEETS	SHEET NO.
351	2008-001VB	COOK	579	495
STA.	TO STA.			
FED. ROAD DIST. NO.	ILLINOIS FED. AID PROJECT			
CONTRACT NO. 60E10				

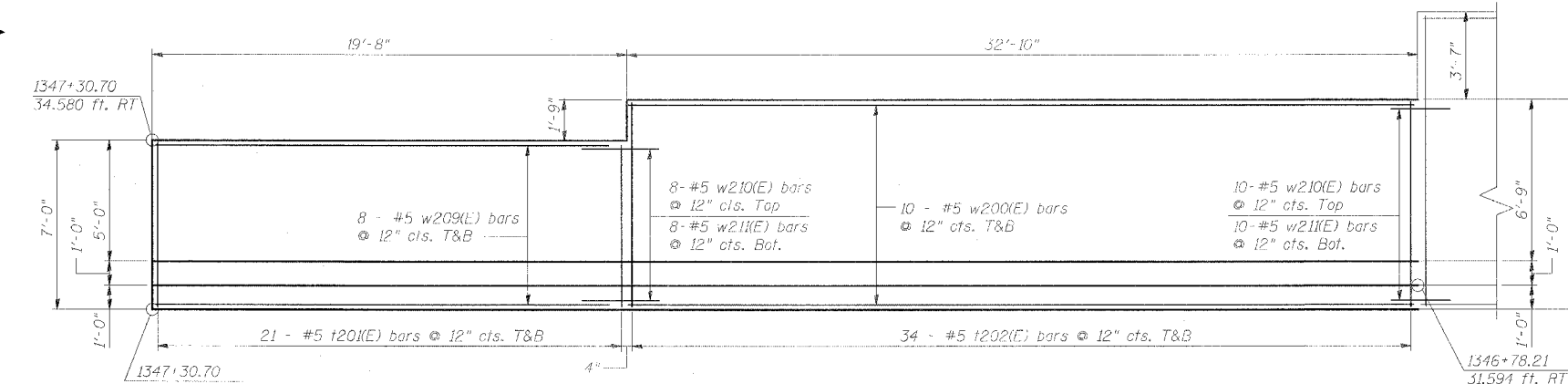
**BILL OF MATERIAL**

Bar	No.	Size	Length	Shape
h208(E)	12	#5	21'-9"	—
h209(E)	14	#5	34'-11"	—
n201(E)	42	#5	6'-9"	U
n202(E)	68	#5	7'-11"	U
t201(E)	42	#5	6'-8"	—
t202(E)	68	#5	8'-4"	—
w200(E)	20	#5	32'-0"	—
w209(E)	16	#5	18'-4"	—
w210(E)	18	#5	6'-7"	—
w211(E)	18	#5	5'-11"	—
Structure Excavation	Cu Yd	171.6		
Concrete Structures	Cu Yd	34.8		
Pipe Underdrain for Structures 4"	Foot	53		
Reinforcement Bars, Epoxy Coated	Pound	3740		
Geocomposite Wall Drain	Sq Yd	22.8		
Porous Granular Embankment	Cu Yd	129.8		



**ELEVATION**

**LEGEND:**  
 F.F. = Front Face  
 B.F. = Back Face  
 E.F. = Each Face  
 T&B = Top and Bottom

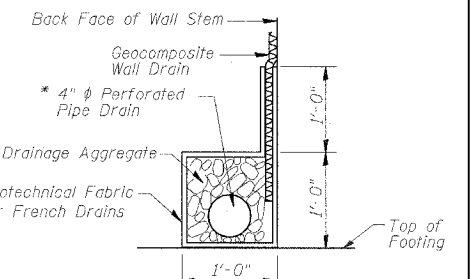


**PLAN**

(Wall reinforcement has been omitted for clarity)

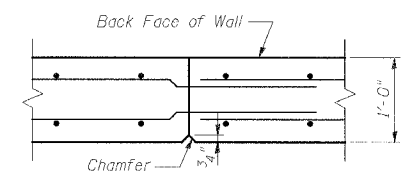
**NOTES:**

1. Work this Sheet with Sheet R6.
2. Reinforcement bars designated (E) shall be epoxy coated.
3. Concrete clear cover shall be 2" minimum unless noted otherwise.
4. All edges shall have standard 3/4" chamfers except as noted.
5. Min. Lap for Bar #5 = 2'-2".
6. Walls must only be built when Metra is operating on temporary shoo-flies. Cutting into the embankment along Metra tracks will not be permitted when rail loading is present.
7. For railing, see Railing Details sheet.
8. Excavation for placing Porous Granular Embankment is included in cost of Structure Excavation. Porous Granular Embankment shall be compacted to 95% Modified Proctor Density and its coarse aggregate gradation shall be CA 18. Any additional area excavated beyond pay limits for Structure Excavation shall also be backfilled with Porous Granular Embankment. Furnishing and placing of this portion of that material will not be measured for payment.
9. Surface of embankment shall be covered with re-used or new granular surface material. See special provisions "Collect and Re-use Granular Surface Material" and "Granular Surface Material". For quantity of Granular Surface Material see Track Construction General Plan Permanent Alignment.

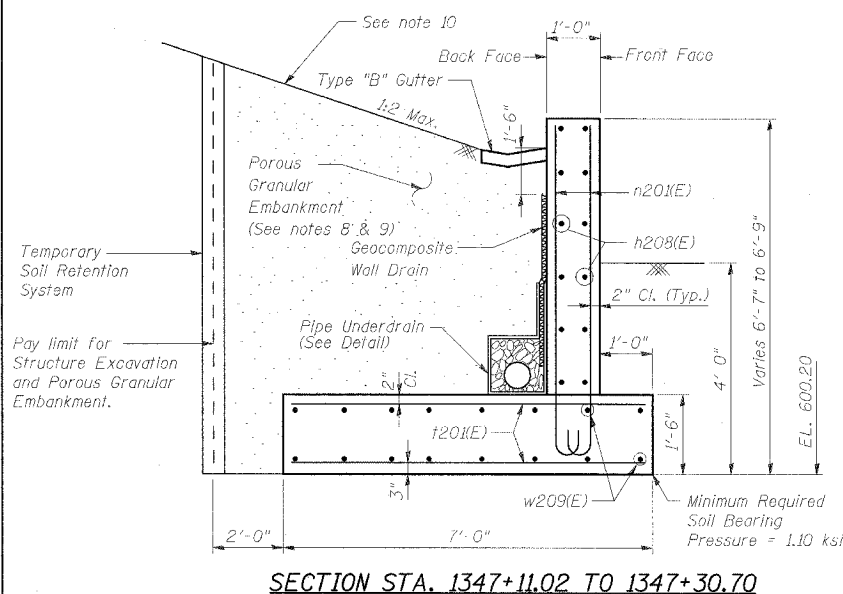


**PIPE UNDERDRAIN DETAIL**

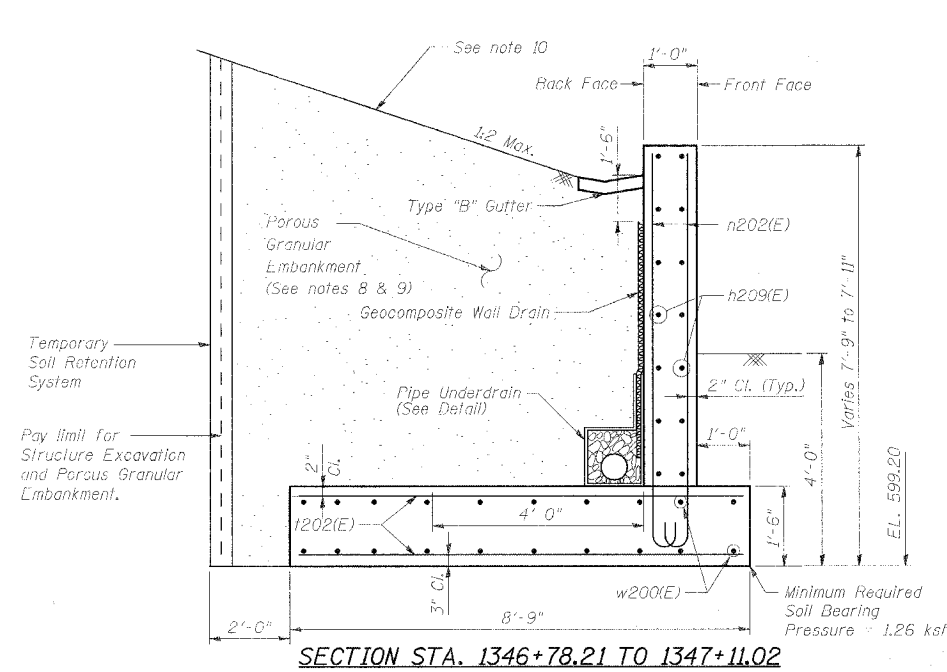
\* Included in the cost of "Pipe Underdrain For Structures"



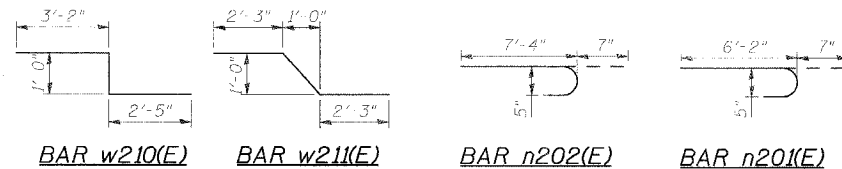
**CONSTRUCTION JOINT DETAIL**



**SECTION STA. 1347+11.02 TO 1347+30.70**



**SECTION STA. 1346+78.21 TO 1347+11.02**



**BAR w210(E)**

**BAR w211(E)**

**BAR n202(E)**

**BAR n201(E)**

**URS** 100 S. WACKER DR., SUITE 500  
 CHICAGO, ILLINOIS 60606  
 TEL. (312) 939-1000  
 FAX (312) 939-4198

REVISIONS	
NAME	DATE

ILLINOIS DEPARTMENT OF TRANSPORTATION  
 US RTE 6 FROM LEXINGTON AVE TO FISK AVE  
 PARK AVE. RETAINING WALL  
 STA. 1346+78.21 TO STA. 1347+30.70  
 DATE 02/21/08  
 DRAWN BY MAD  
 CHECKED BY JPB