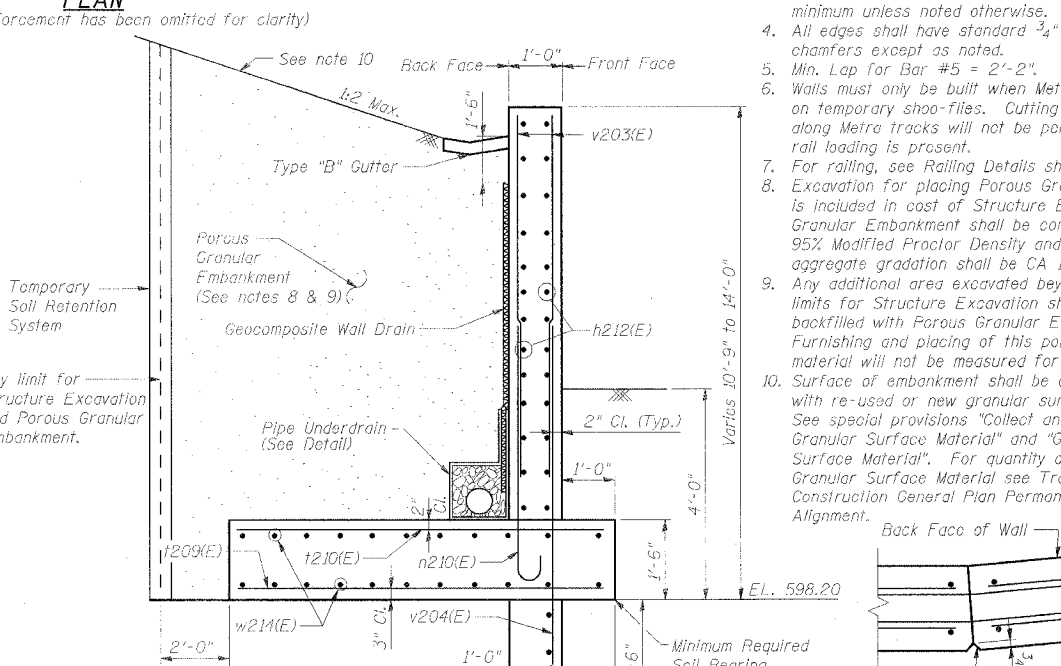
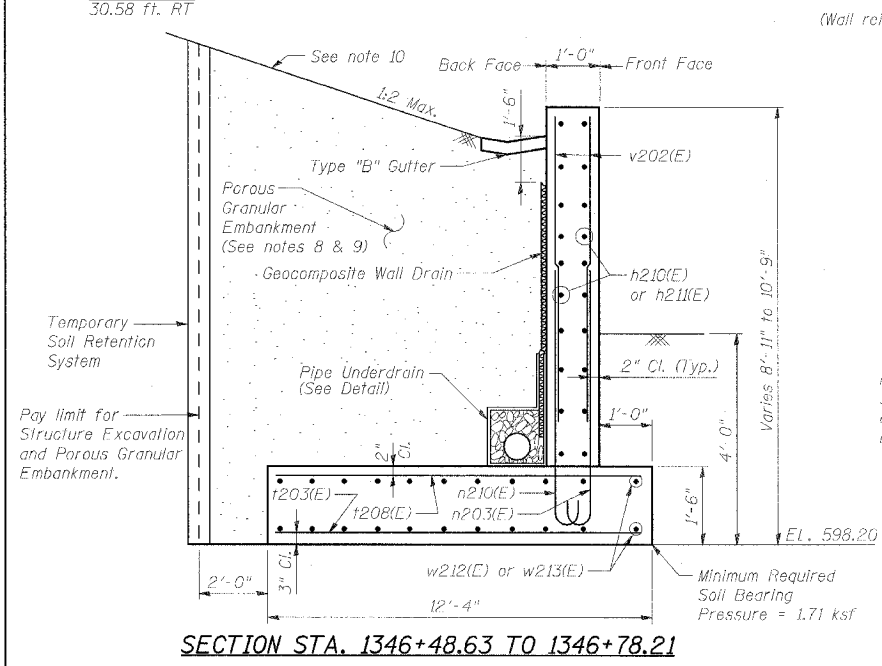
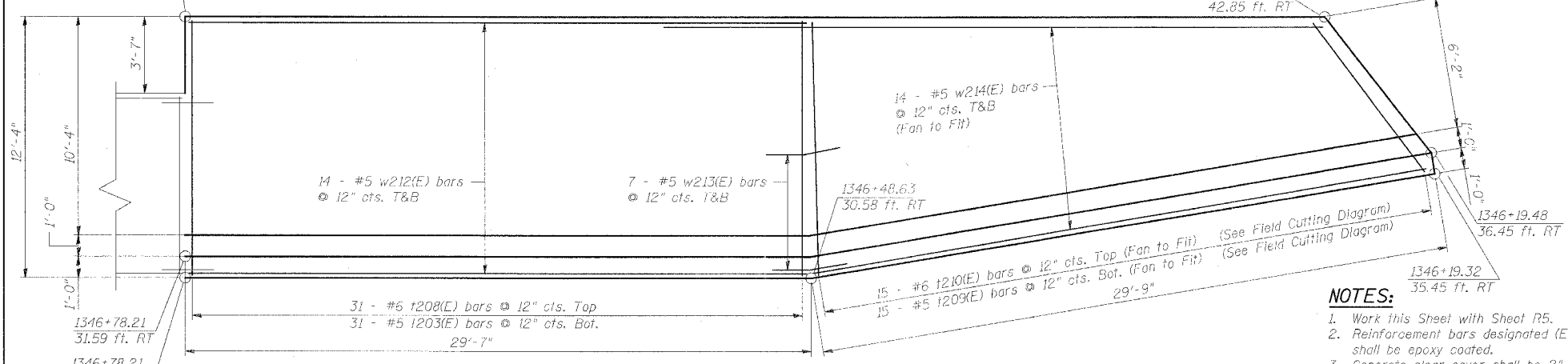
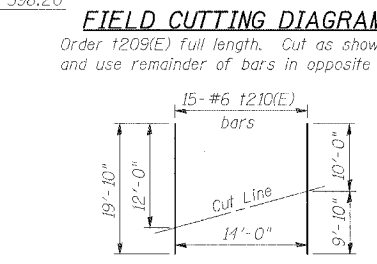
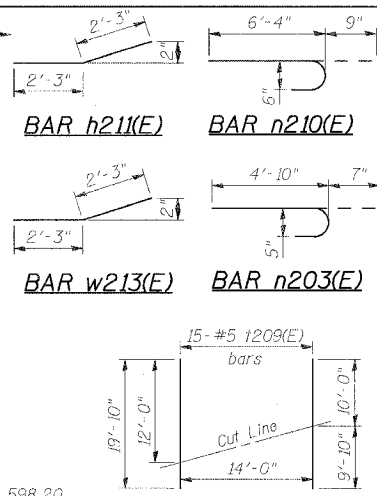
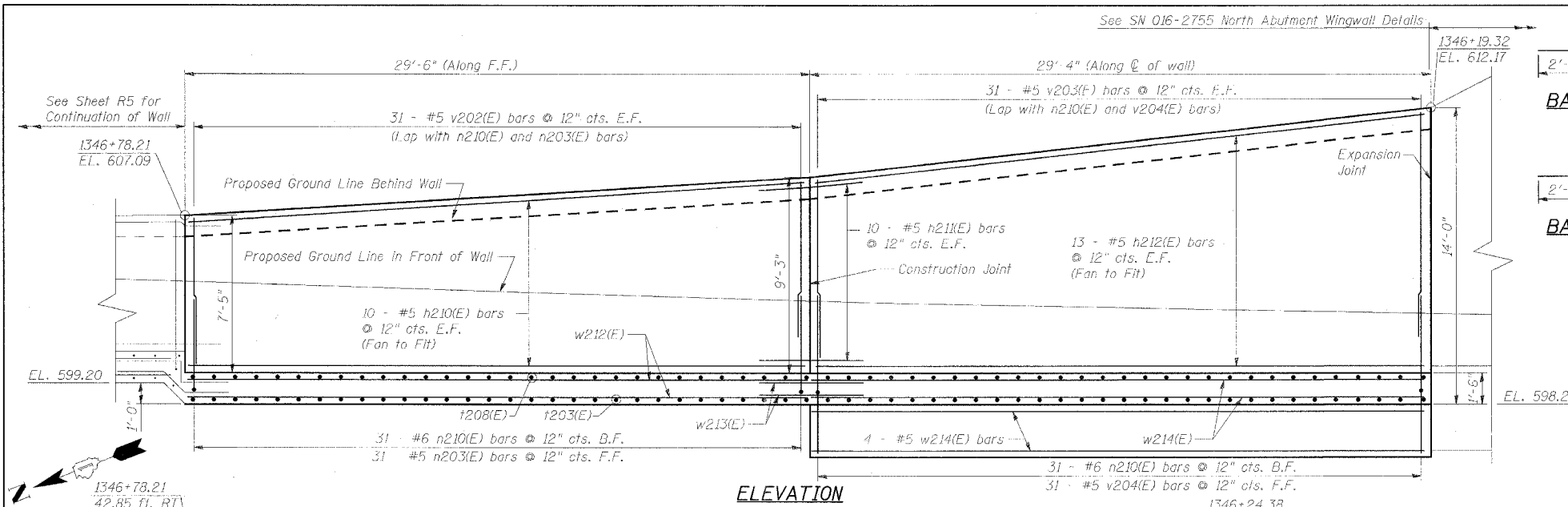


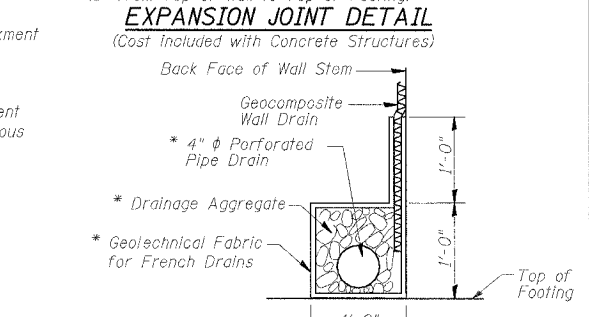
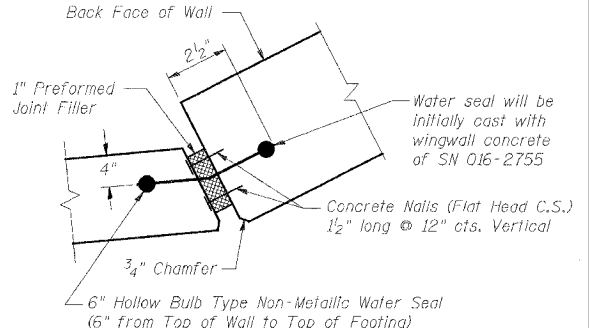
F.A.P. RTE.	SECTION	COUNTY	TOTAL SHEETS	SHEET NO.
351	2008-001VB	COOK	579	496
STA.	TO STA.			
FED. ROAD DIST. NO.	ILLINOIS	FED. AID PROJECT	CONTRACT NO. 60E10	

BILL OF MATERIAL

Bar	No.	Size	Length	Shape
n210(E)	20	#5	29'-2"	—
h211(E)	20	#5	4'-6"	—
h212(E)	26	#5	29'-4"	—
n203(E)	31	#5	5'-5"	—
n210(E)	62	#6	7'-1"	—
t203(E)	31	#5	12'-0"	—
t208(E)	31	#6	12'-0"	—
t209(E)	15	#5	19'-10"	—
t210(E)	15	#6	13'-10"	—
v202(E)	62	#5	7'-3"	—
v203(E)	62	#5	9'-1"	—
v204(E)	31	#5	9'-3"	—
w212(E)	28	#5	29'-2"	—
w213(E)	11	#5	4'-6"	—
w214(E)	32	#5	29'-4"	—
Structure Excavation	Cu Yd	298.9		
Concrete Structures	Cu Yd	60.9		
Pipe Underdrain for Structures 4"	Foot	59		
Reinforcement Bars, Epoxy Coated	Pound	7290		
Geocomposite Wall Drain	Sq Yd	50.1		
Porous Granular Embankment	Cu Yd	310.4		



- NOTES:**
- Work this Sheet with Sheet R5.
 - Reinforcement bars designated (E) shall be epoxy coated.
 - Concrete clear cover shall be 2" minimum unless noted otherwise.
 - All edges shall have standard 3/4" chamfers except as noted.
 - Min. Lap for Bar #5 = 2'-2".
 - Walls must only be built when Metra is operating on temporary shoo-flies. Cutting into the embankment along Metra tracks will not be permitted when rail loading is present.
 - For railing, see Railing Details sheet.
 - Excavation for placing Porous Granular Embankment is included in cost of Structure Excavation. Porous Granular Embankment shall be compacted to 95% Modified Proctor Density and its coarse aggregate gradation shall be CA 18.
 - Any additional area excavated beyond pay limits for Structure Excavation shall also be backfilled with Porous Granular Embankment. Furnishing and placing of this portion of that material will not be measured for payment.
 - Surface of embankment shall be covered with re-used or new granular surface material. See special provisions "Collect and Re-use Granular Surface Material" and "Granular Surface Material". For quantity of Granular Surface Material see Track Construction General Plan Permanent Alignment.



LEGEND:
 F.F. = Front Face
 B.F. = Back Face
 E.F. = Each Face
 T&B = Top and Bottom

PIPE UNDERDRAIN DETAIL
 * Included in the cost of "Pipe Underdrain For Structures"

REVISIONS	
NAME	DATE

ILLINOIS DEPARTMENT OF TRANSPORTATION
 US RTE 6 FROM LEXINGTON AVE TO FISK AVE
 PARK AVE. RETAINING WALL
 STA. 1346+22.43 TO STA. 1346+78.21
 DATE 02/21/08
 DRAWN BY MAD
 CHECKED BY JPB