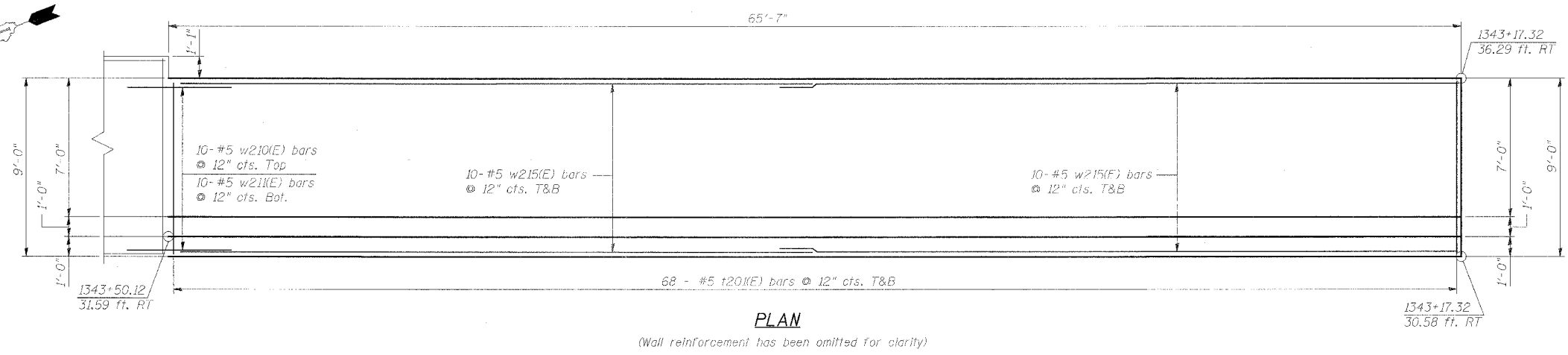
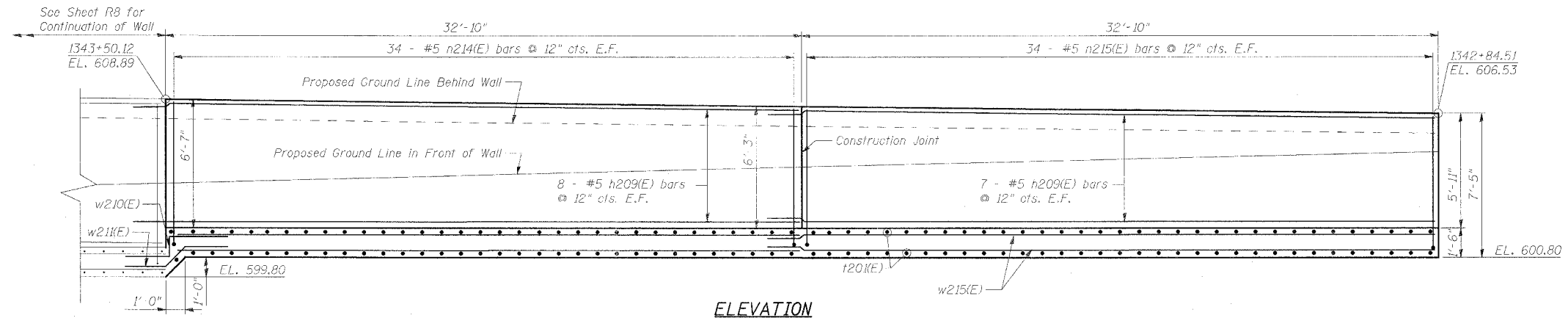


F.A.P. RTE.	SECTION	COUNTY	TOTAL SHEETS	SHEET NO.
351	2008-001VB	COOK	579	499
STA.		TO STA.		
FED. ROAD DIST. NO.		ILLINOIS FED. AID PROJECT		
CONTRACT NO. 60E10				

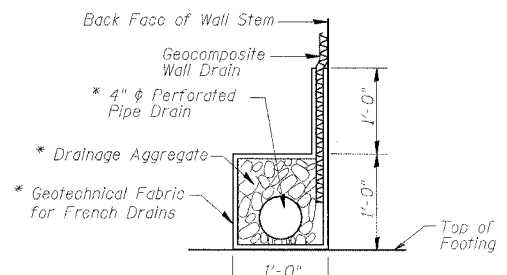


BILL OF MATERIAL

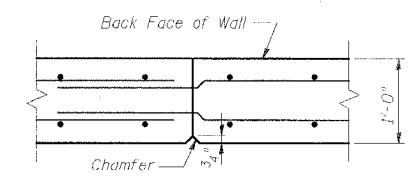
Bar	No.	Size	Length	Shape
h209(E)	30	#5	34'-11"	—
n214(E)	68	#5	7'-11"	U
n215(E)	68	#5	7'-7"	U
t201(E)	136	#5	8'-8"	—
w210(E)	10	#5	6'-7"	—
w211(E)	10	#5	5'-11"	—
w215(E)	40	#5	33'-8"	—
Structure Excavation	Cu Yd	194.9		
Concrete Structures	Cu Yd	47.9		
Pipe Underdrain for Structures 4"	Foot	66		
Reinforcement Bars, Epoxy Coated	Pound	4960		
Geocomposite Wall Drain	Sq Yd	31.2		
Porous Granular Embankment	Cu Yd	190.9		



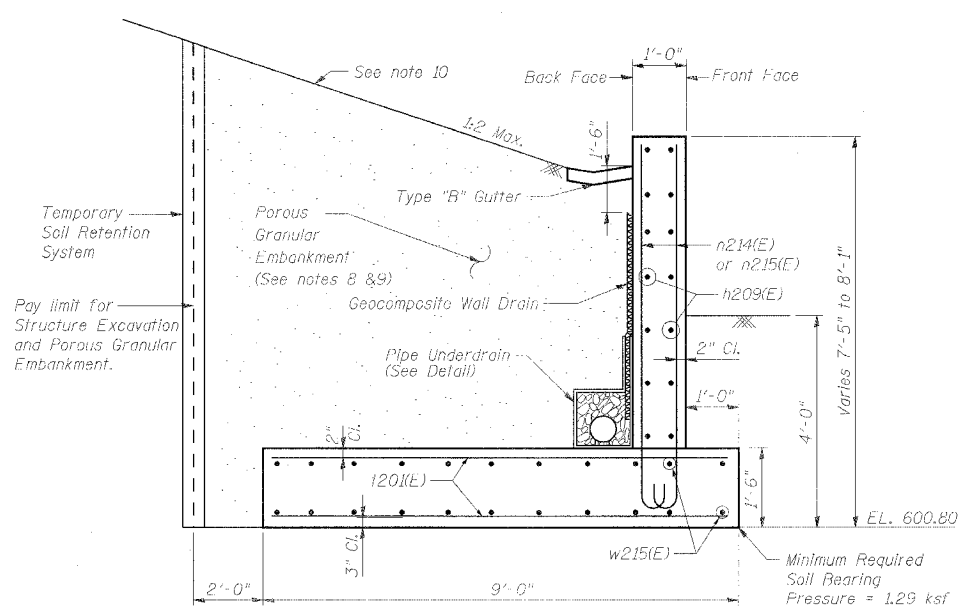
PLAN
(Wall reinforcement has been omitted for clarity)



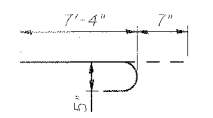
PIPE UNDERDRAIN DETAIL
* Included in the cost of "Pipe Underdrains For Structures"



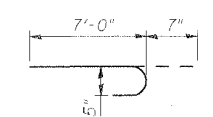
CONSTRUCTION JOINT DETAIL



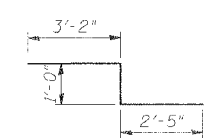
SECTION STA. 1342+84.51 TO 1343+50.12
** See Section 502 of the Standard Specification



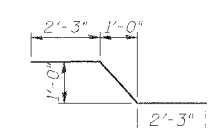
BAR n214(E)



BAR n215(E)



BAR w210(E)



BAR w211(E)

- NOTES:**
- Work this Sheet with Sheet R8.
 - Reinforcement bars designated (C) shall be epoxy coated.
 - Concrete clear cover shall be 2" minimum unless noted otherwise.
 - All edges shall have standard 3/4" chamfers except as noted.
 - Min. Lap for Bar #5 = 2'-2".
 - Walls must only be built when Metra is operating on temporary shoo-fles. Cutting into the embankment along Metra tracks will not be permitted when rail loading is present.
 - For railing, see Railing Details sheet.
 - Excavation for placing Porous Granular Embankment is included in cost of Structure Excavation. Porous Granular Embankment shall be compacted to 95% Modified Proctor Density and its coarse aggregate gradation shall be CA 18.
 - Any additional area excavated beyond pay limits for Structure Excavation shall also be backfilled with Porous Granular Embankment. Furnishing and placing of this portion of that material will not be measured for payment.
 - Surface of embankment shall be covered with re-used or new granular surface material. See special provisions "Collect and Re-use Granular Surface Material" and "Granular Surface Material". For quantity of Granular Surface Material see Track Construction General Plan Permanent Alignment.

- LEGEND:**
- F.F. = Front Face
 - B.F. = Back Face
 - E.F. = Each Face
 - T&B = Top and Bottom

REVISIONS	
NAME	DATE

ILLINOIS DEPARTMENT OF TRANSPORTATION
US RTE 6 FROM LEXINGTON AVE TO FISK AVE

PARK AVE. RETAINING WALL
STA. 1342+84.51 TO STA. 1343+50.12

DRAWN BY MAD
CHECKED BY JPB
DATE 02/21/08

SHEET R9 OF R12