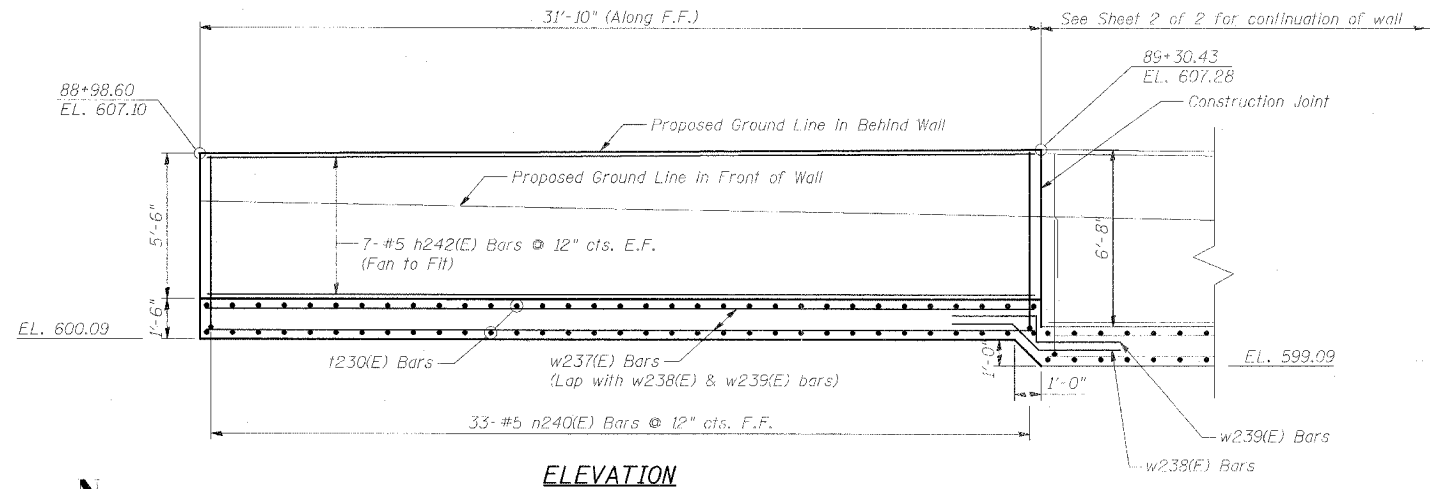


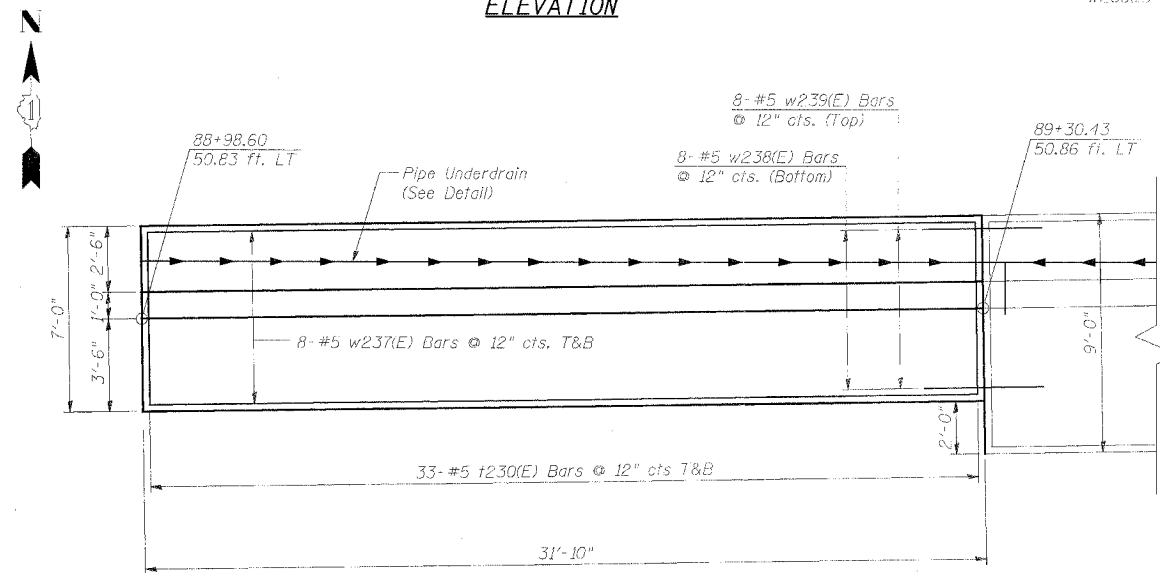
F.A.P. RTE.	SECTION	COUNTY	TOTAL SHEETS	SHEET NO.
351	2008-001VB	COOK	579	1501
STA.		TO STA.		
FED. ROAD DIST. NO.		ILLINOIS FED. AID PROJECT		
CONTRACT NO. 60E10				

BILL OF MATERIAL

Bar	No.	Size	Length	Shape
h242(E)	14	#5	34'-0"	—
n240(E)	66	#5	7'-2"	⌋
t230(E)	66	#5	6'-8"	—
w237(E)	16	#5	31'-6"	—
w238(E)	8	#5	5'-11"	⌋
w239(E)	8	#5	7'-4"	⌋
Structure Excavation	Cu Yd		97.8	
Concrete Structures	Cu Yd		19.0	
Pipe Underdrain	Foot		32	
for Structures 4"				
Reinforcement Bars, Epoxy Coated	Pound		2090	
Geocomposite Wall Drain	Sq Yd		14.5	
Porous Granular Embankment, Special	Cu Yd		10.9	

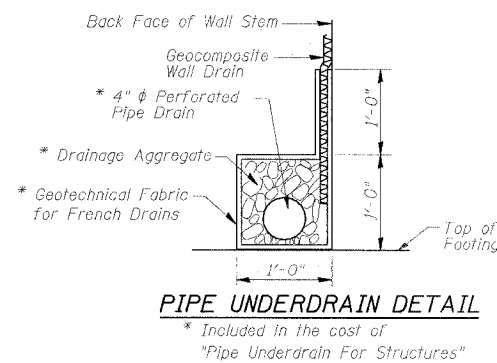
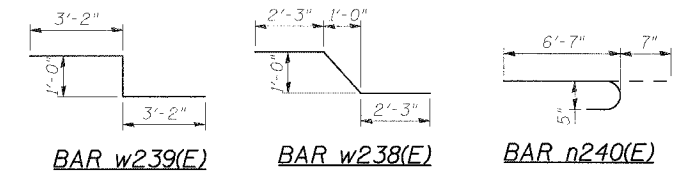


ELEVATION



PLAN

(Wall reinforcement has been omitted for clarity)

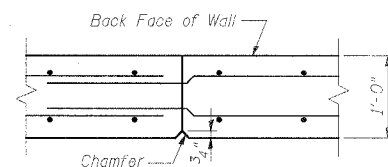


PIPE UNDERDRAIN DETAIL

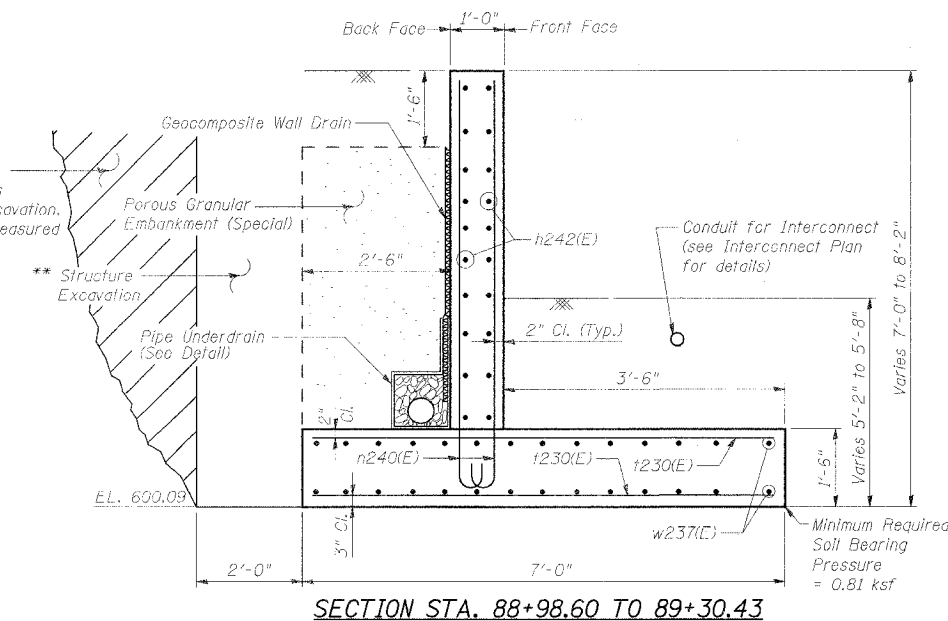
LEGEND:

- F.F. = Front Face
- B.F. = Back Face
- E.F. = Each Face
- T&B = Top and Bottom

Over Excavation beyond the limits of structure excavation. This area not measured for payment.



CONSTRUCTION JOINT DETAIL



SECTION STA. 88+98.60 TO 89+30.43

** See Section 502 of the Standard Specification

NOTES:

1. Work this Sheet with Sheet 2 of 2.
2. Reinforcement bars designated (E) shall be epoxy coated.
3. Concrete clear cover shall be 2" minimum unless noted otherwise.
4. All edges shall have standard 3/4" chamfers except as noted.
5. Min. Lap for Bar #5 = 2'-2"

REVISIONS	
NAME	DATE

ILLINOIS DEPARTMENT OF TRANSPORTATION
 US RTE 6 FROM LEXINGTON AVE TO FISK AVE
 US RTE 6 & PARK AVE. NW RET. WALL
 SHEET 1 OF 2
 DATE 02/21/08
 DRAWN BY PMV
 CHECKED BY MAD