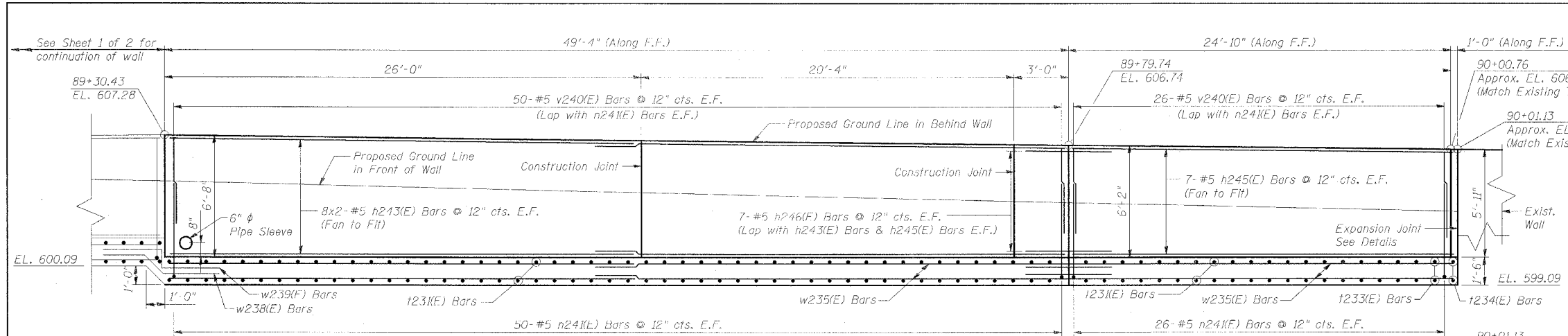


F.A.P. RTE.	SECTION	COUNTY	TOTAL SHEETS	SHEET NO.
351	2008-001VB	COOK	579	502
STA.	TO STA.			
FED. ROAD DIST. NO.	ILLINOIS FED. AID PROJECT		CONTRACT NO. 60E10	



NOTES:

1. Work this Sheet with Sheet 1 of 2.
2. Reinforcement bars designated (E) shall be epoxy coated.
3. Concrete clear cover shall be 2" minimum unless noted otherwise.
4. All edges shall have standard 3/4" chamfers except as noted.
5. Min. Lap for Bar #5 = 2'-2".
6. A firmly bonded membrane dampproofing system shall be placed as shown across the joint between new and old concrete. Dampproofing shall consist of one coat of asphalt primer (ASTM D41), two coats of Type 2 asphalt (ASTM D419), and two layers of woven glass (ASTM D166B) or glass fiber mat (ASTM D217B) fabric. Dampproofing shall extend from top of wall to top of footing and shall be included in the cost of "Concrete Structures".
7. Pipe Sleeve shall be included in the cost of "Concrete Structures".

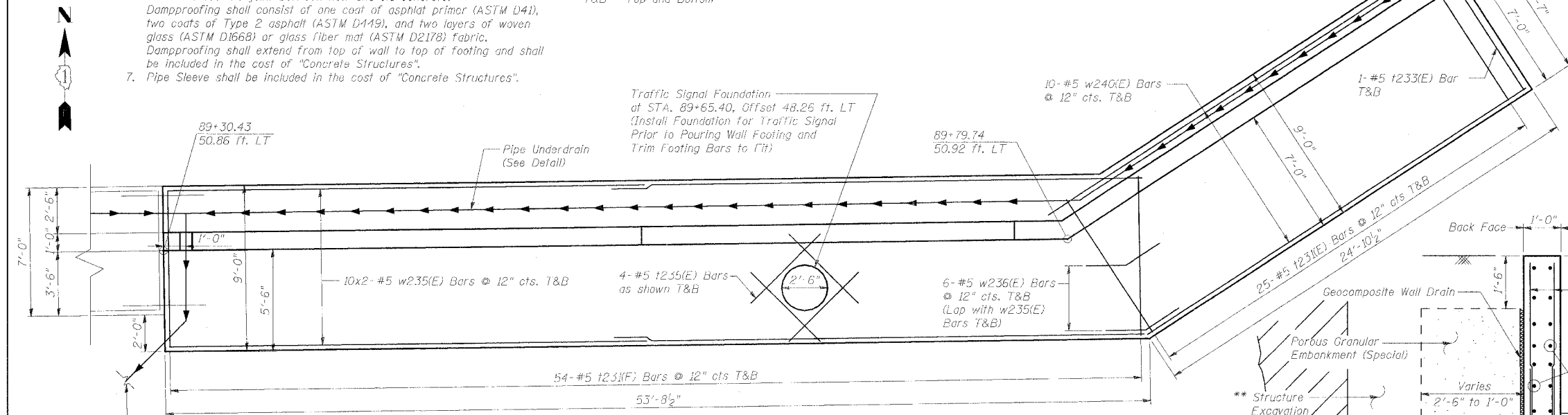
ELEVATION

LEGEND:

- F.F. = Front Face
- B.F. = Back Face
- E.F. = Each Face
- T&B = Top and Bottom

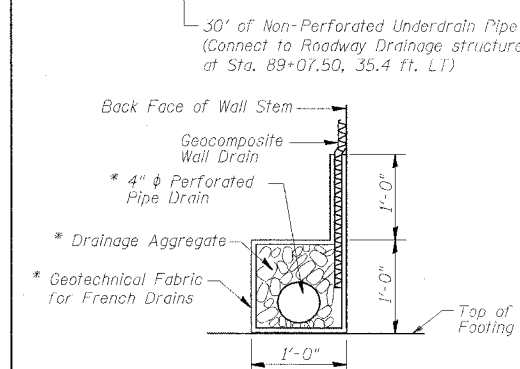
BILL OF MATERIAL

Bar	No.	Size	Length	Shape
h243(E)	32	#5	25'-8"	—
h245(E)	14	#5	24'-10"	—
h246(E)	14	#5	4'-4"	—
n24(E)	152	#5	4'-9"	U
t23(E)	158	#5	8'-8"	—
t233(E)	2	#5	7'-5"	—
t235(E)	8	#5	5'-6"	—
v240(E)	152	#5	5'-9"	—
w235(E)	40	#5	27'-11"	—
w236(E)	12	#5	4'-4"	—
w240(E)	20	#5	24'-8"	—
Structure Excavation Cu Yd 262.8				
Concrete Structures Cu Yd 55.0				
Pipe Underdrain for Structures 4" Foot 105				
Reinforcement Bars, Epoxy Coated Pound 6180				
Geocomposite Wall Drain Sq Yd 39.4				
Porous Granular Embankment, Special Cu Yd 30.1				



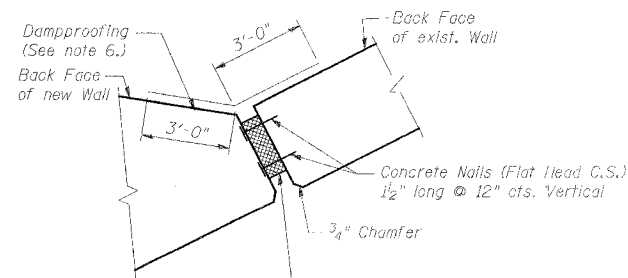
PLAN

(Wall reinforcement has been omitted for clarity)



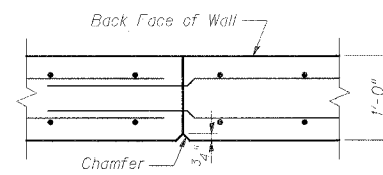
PIPE UNDERDRAIN DETAIL

* Included in the cost of "Pipe Underdrain For Structures"

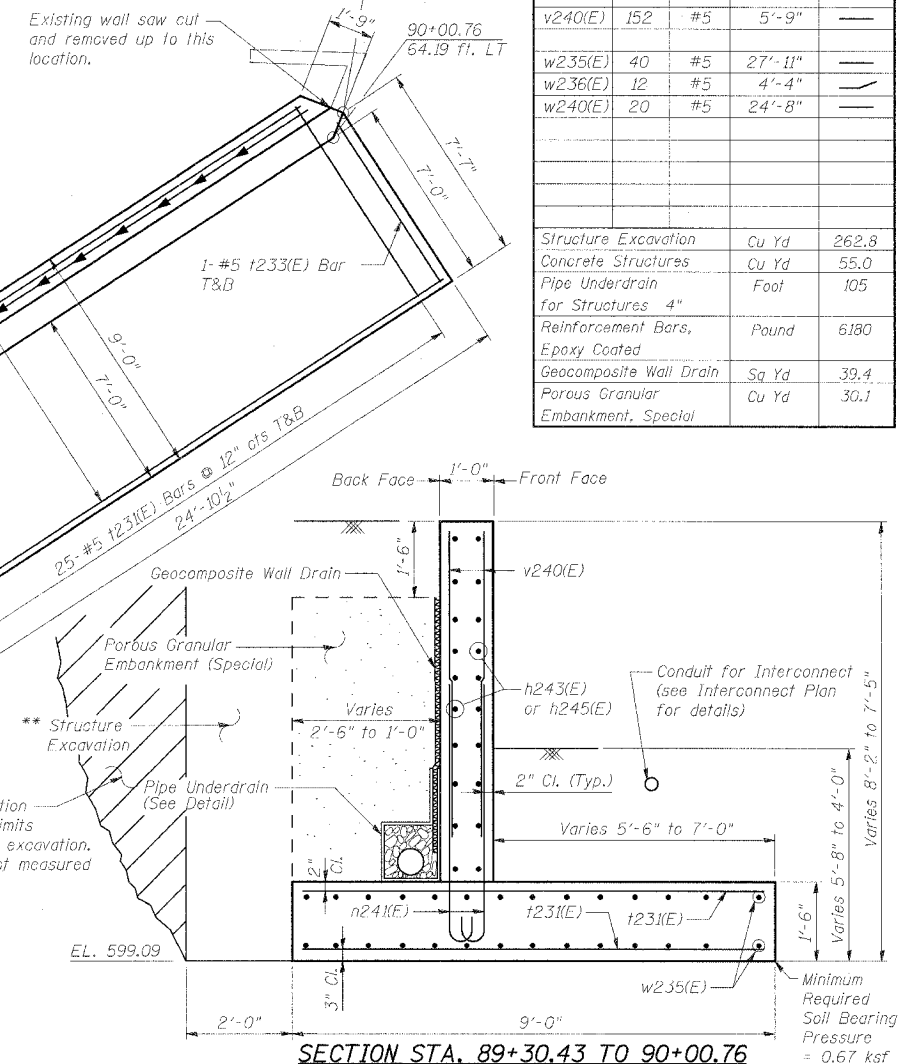
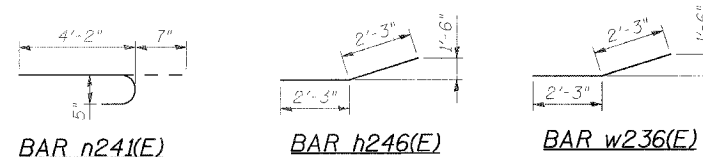


EXPANSION JOINT DETAIL

(Cost included with Concrete Structures)



CONSTRUCTION JOINT DETAIL



SECTION STA. 89+30.43 TO 90+00.76

** See Section 502 of the Standard Specification

SHEET R12 OF R12

REVISIONS	
NAME	DATE

ILLINOIS DEPARTMENT OF TRANSPORTATION
US RTE 6 FROM LEXINGTON AVE TO FISK AVE
US RTE 6 & PARK AVE. NW RET. WALL
SHEET 2 OF 2

DATE 02/21/08
DRAWN BY PMV
CHECKED BY MAD