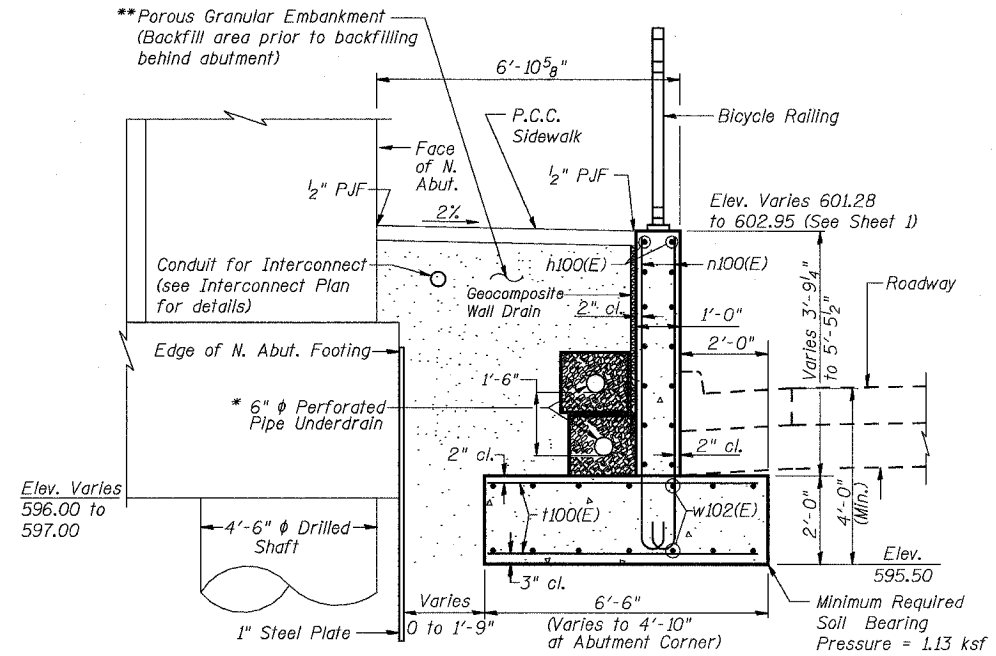


3/13/2008 5:50:02 PM
 G:\17049_069\structures\retaining walls\main contract\walls under bridges along us 6\03_091-92_a.bdd

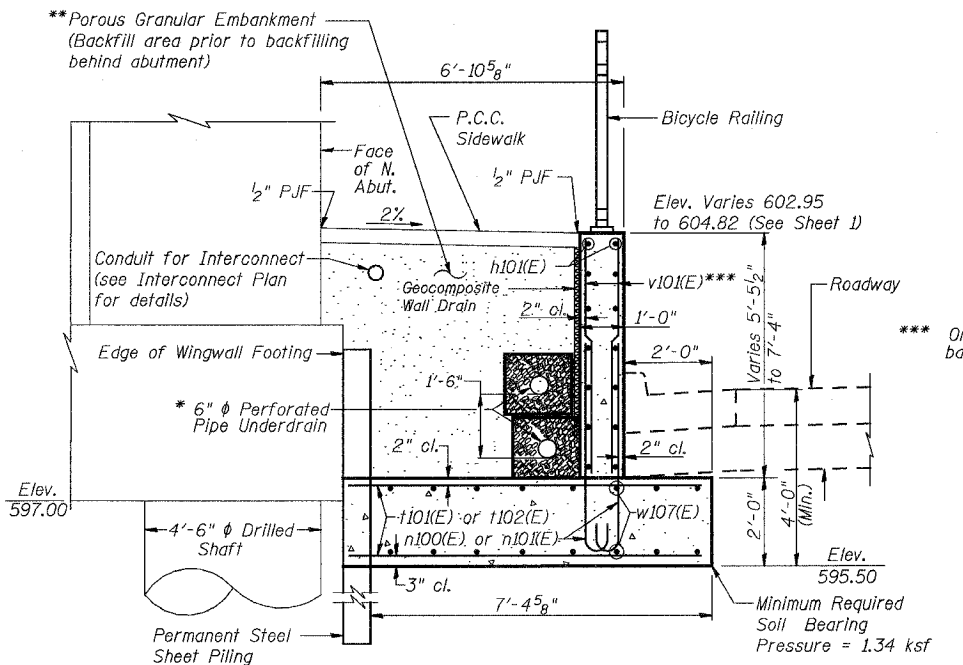
STATE OF ILLINOIS
 DEPARTMENT OF TRANSPORTATION

ROUTE NO.	SECTION	COUNTY	TOTAL SHEETS	SHEET NO.
F.A.P. 351	2008-001VB	COOK	579	505
FED. ROAD DIST. NO. 7		ILLINOIS	FED. AID PROJECT	
CONTRACT NO. 60E10				

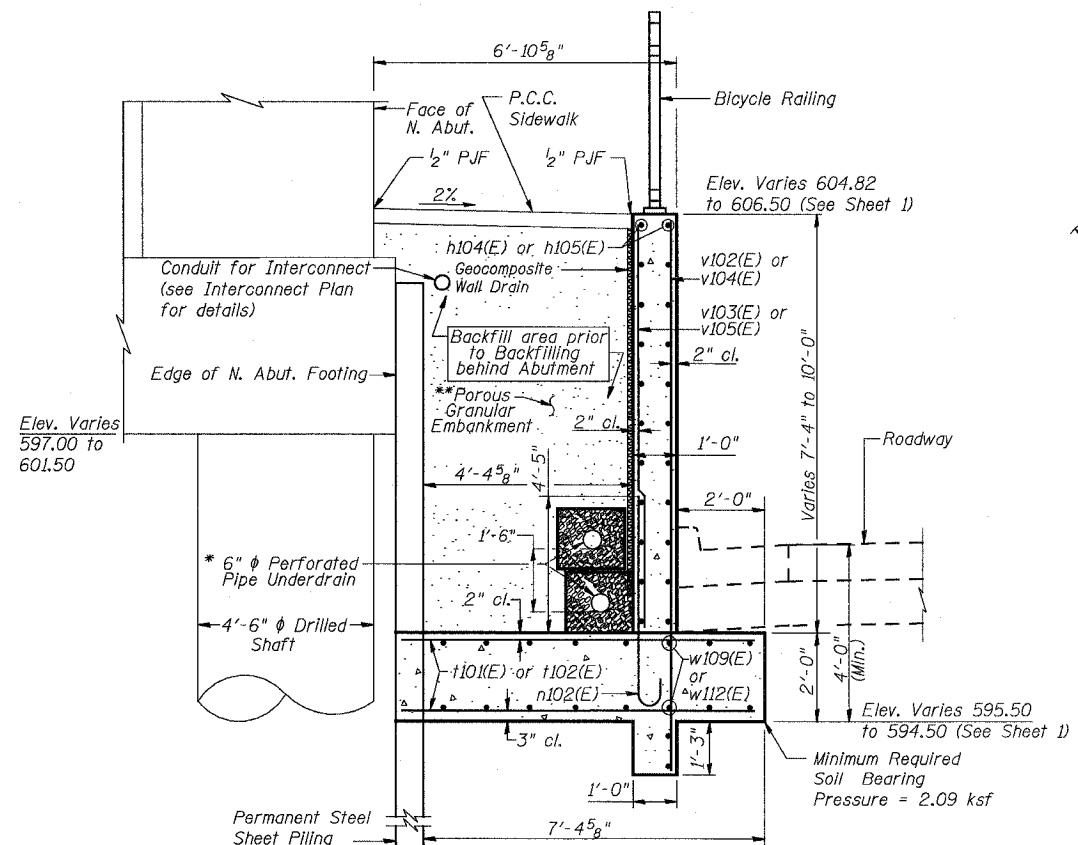
SHEET NO. 3
24 SHEETS



SECTION STA. 90+99.40 TO 91+20.14



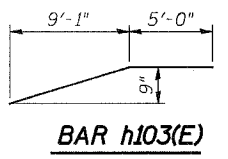
SECTION STA. 91+20.14 TO 91+47.92



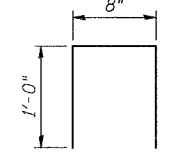
SECTION STA. 91+47.92 TO 92+10.93

Bar	R	L
h100(E)	29'-3"	22'-4"
w100(E)	31'-3"	23'-11"
w101(E)	30'-3"	23'-1"
w102(E)	29'-3"	22'-4"
w103(E)	28'-3"	21'-7"
w104(E)	27'-3"	20'-10"
w105(E)	26'-3"	20'-0"
w106(E)	25'-3"	19'-3"

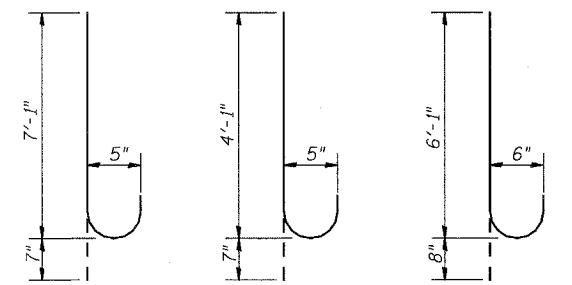
BARS h100(E) and w100(E) through w106(E)



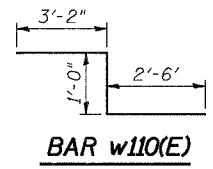
BAR h103(E)



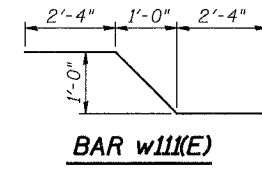
BAR s100(E)



BAR n100(E) BAR n101(E) BAR n102(E)



BAR w110(E)



BAR w111(E)

BILL OF MATERIAL
 RETAINING WALL "A"

Bar	No.	Size	Length	Shape
h100(E)	12	#5	22'-4"	U
h101(E)	14	#5	29'-11"	U
h102(E)	4	#5	20'-2"	U
h103(E)	2	#5	14'-1"	U
h104(E)	20	#5	32'-2"	U
h105(E)	20	#5	30'-2"	U
h106(E)	2	#5	23'-6"	U
n100(E)	62	#5	7'-8"	U
n101(E)	40	#5	4'-8"	U
n102(E)	64	#6	6'-9"	U
s100(E)	18	#5	2'-8"	U
h100(E)	50	#6	6'-2"	U
h101(E)	68	#6	7'-0"	U
h102(E)	120	#6	8'-0"	U
v101(E)	20	#5	12'-4"	U
v102(E)	40	#5	11'-10"	U
v103(E)	40	#5	7'-0"	U
v104(E)	24	#5	12'-10"	U
v105(E)	24	#5	8'-0"	U
w100(E)	2	#5	23'-11"	U
w101(E)	2	#5	23'-1"	U
w102(E)	2	#5	22'-4"	U
w103(E)	2	#5	21'-7"	U
w104(E)	2	#5	20'-10"	U
w105(E)	2	#5	20'-0"	U
w106(E)	2	#5	19'-3"	U
w107(E)	16	#5	29'-11"	U
w108(E)	18	#5	32'-1"	U
w109(E)	18	#5	5'-4"	U
w110(E)	8	#5	6'-8"	U
w111(E)	10	#5	6'-1"	U
w112(E)	18	#5	23'-9"	U
Porous Granular Embankment		Cu. Yd.	152	
Structure Excavation		Cu. Yd.	115	
Non-Special Waste Disposal		Cu. Yd.	115.1	
Concrete Structures		Cu. Yd.	97.4	
Reinforcement Bars, Epoxy Coated		Pound	9840	
Pipe Underdrain For Structures 6"		Foot	226	
Bar Splicers		Each	70	
Geocomposite Wall Drain		Sq. Yd.	88	

- Notes:
1. Work this sheet with Sheet 2.
 2. ** Excavation for placing Porous Granular Embankment is included in cost of Braced Excavation & Structure Excavation.
 3. Porous Granular Embankment shall be compacted to 95% Modified Proctor Density and its coarse aggregate gradation shall be CA 18.

REVISIONS	
NAME	DATE

ILLINOIS DEPARTMENT OF TRANSPORTATION
 US RTE 6 FROM I-294 TO IL RTE 1
RET. WALL "A" DETAILS
 STA. 90+99.40 TO 92+10.93
 U.S. 6 MAINLINE RETAINING WALLS
 ALONG 159TH STREET
 SCALE: DATE: 2/21/2008

URS
 100 South Wacker Drive,
 Suite 500
 Chicago, IL 60606
 (312) 939-1000

DESIGNED MAD
 CHECKED JPB
 DRAWN MAD
 CHECKED DEY