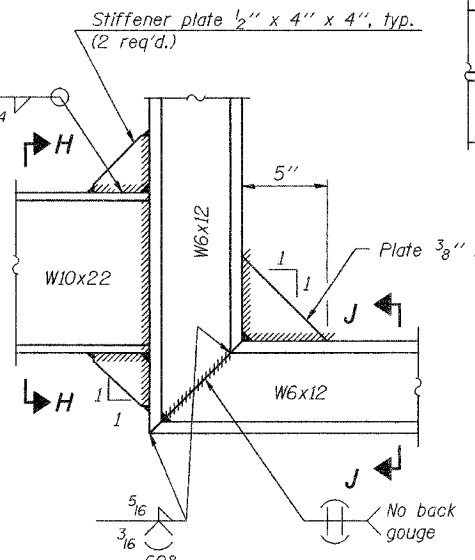
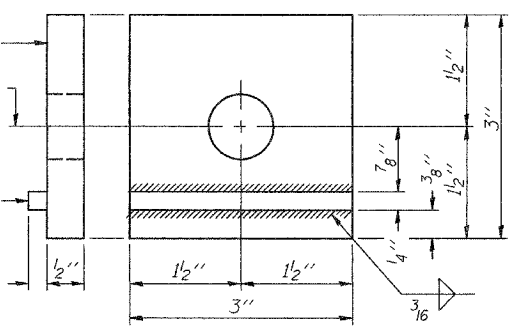
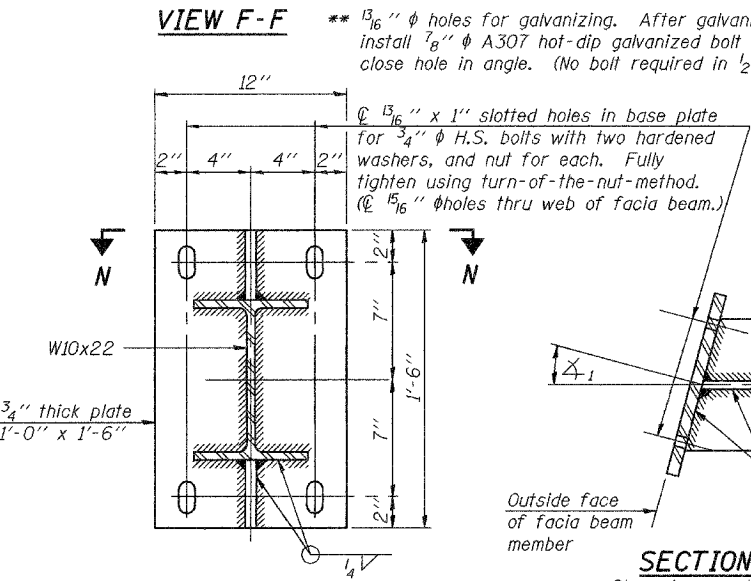
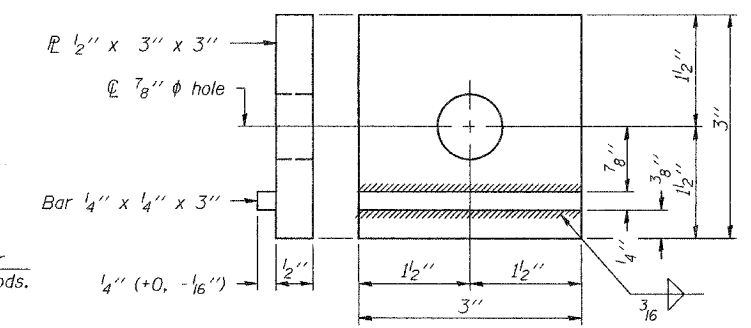
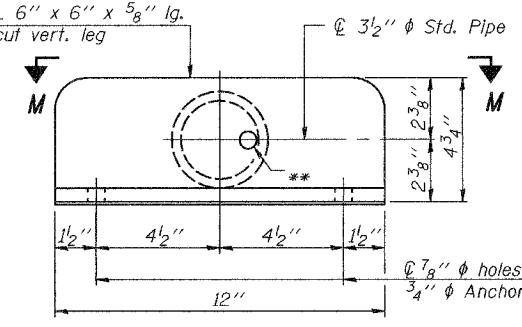
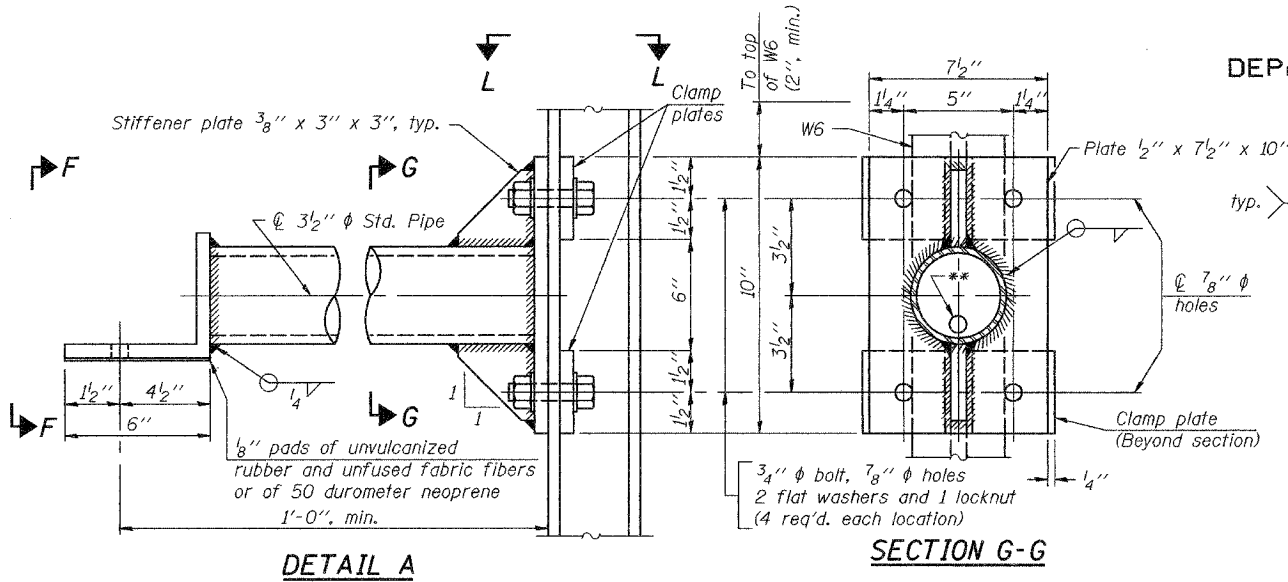
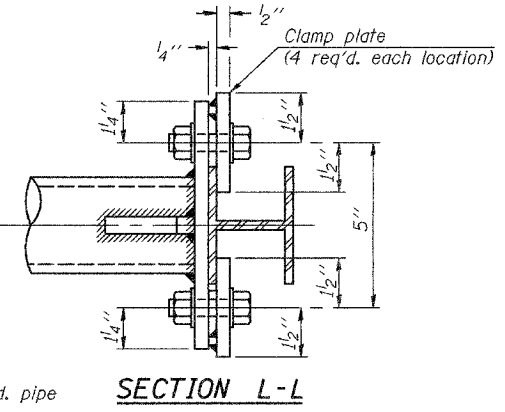


STATE OF ILLINOIS  
DEPARTMENT OF TRANSPORTATION

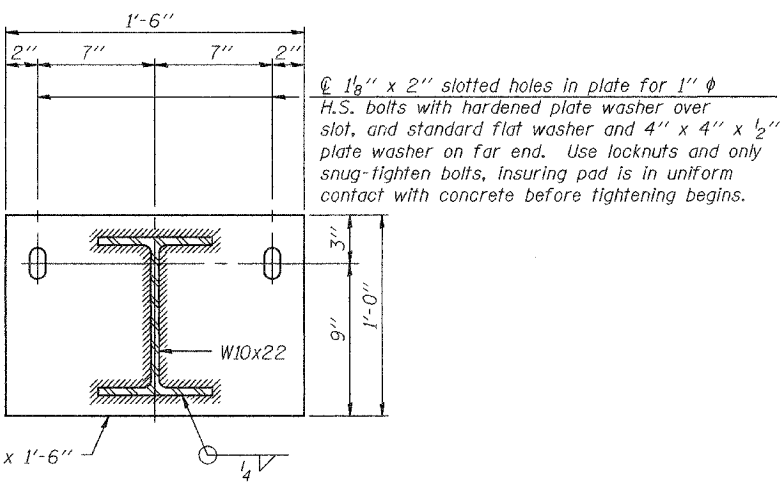
ROUTE NO.	SECTION	COUNTY	DATE	SHEET	SHEET NO. 14
FAI 94	*	COOK	30	17	15 SHEETS
FED. ROAD DIST. NO. 7					FED. AID PROJECT-
					Contract Number: 60E12 * 1111-700 HB-BR



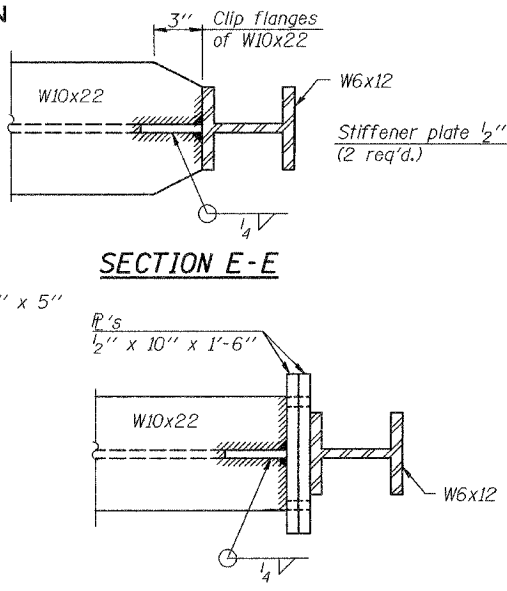
DETAIL B - WELDED W10x22 TO W6x12 CONNECTION



SECTION L-L

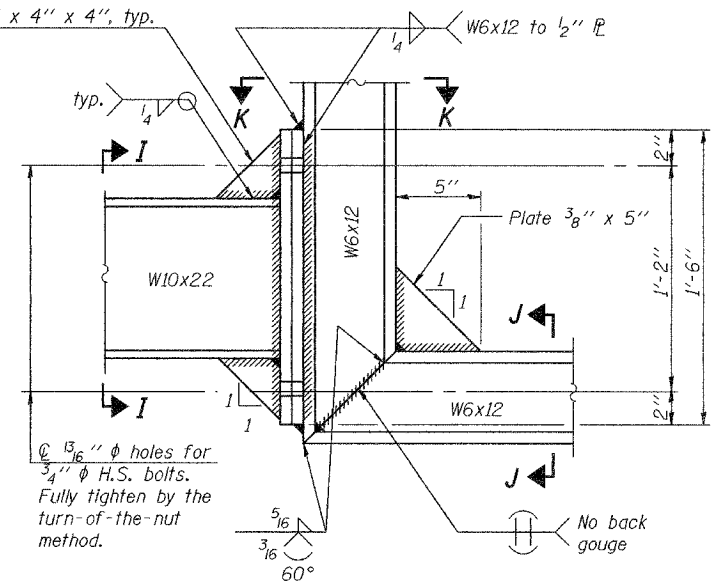


SECTION D-D



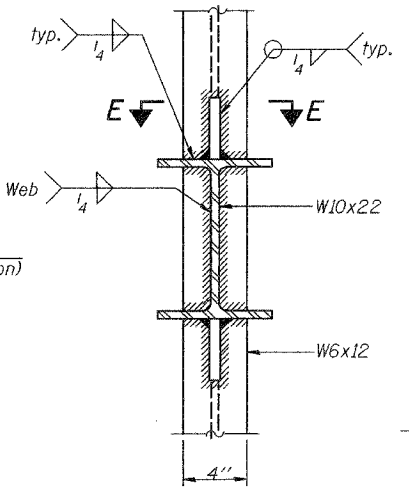
SECTION E-E

SECTION K-K

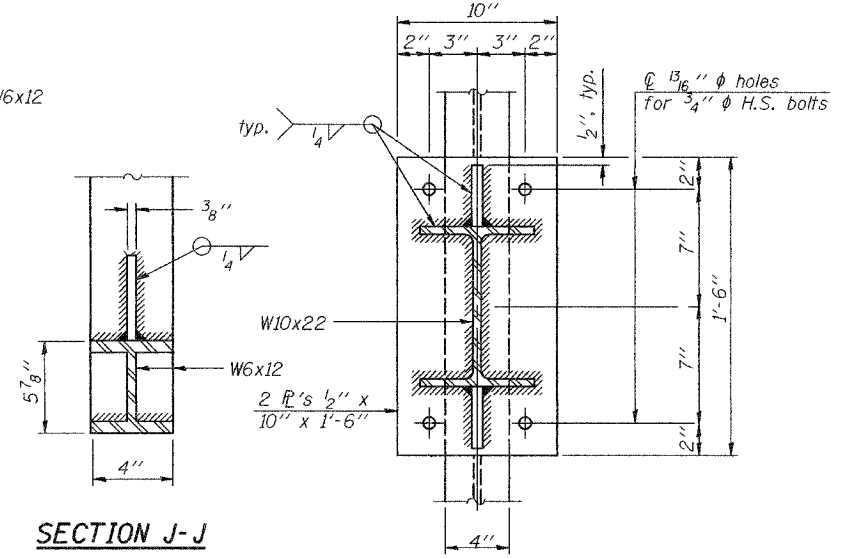


DETAIL B - ALTERNATE BOLTED W10x22 TO W6x12 CONNECTION

Alternate may be substituted by contractor to facilitate construction or galvanizing, especially on long struts for skewed bridges.



SECTION H-H



SECTION J-J

SECTION I-I

Note: For constant slab overhang at fascia beam,  $\Delta_1 = \Delta_2 = \text{sign angle}$ . For flared beams or other special cases where  $\Delta_1 \neq \Delta_2$ ,  $\Delta_1 = \text{sign angle}$ .

DESIGNED	ATH
CHECKED	VHV
DRAWN	Steffen
CHECKED	ATH VHV

MAY 16, 2008  
EXAMINED *Carl Proyer*  
PASSED *Ralph E. Anderson*  
ENGINEER OF STRUCTURAL SERVICES  
ENGINEER OF BRIDGES AND STRUCTURES

NUMBER	REVISION	DATE

BM-3 6/01/2007

BRIDGE MOUNT SIGN STRUCTURES  
CONNECTION DETAILS

BRIDGE MOUNT SIGN DETAILS  
115th ST. OVER FAI RT. 94  
COOK COUNTY  
SN 016-2042