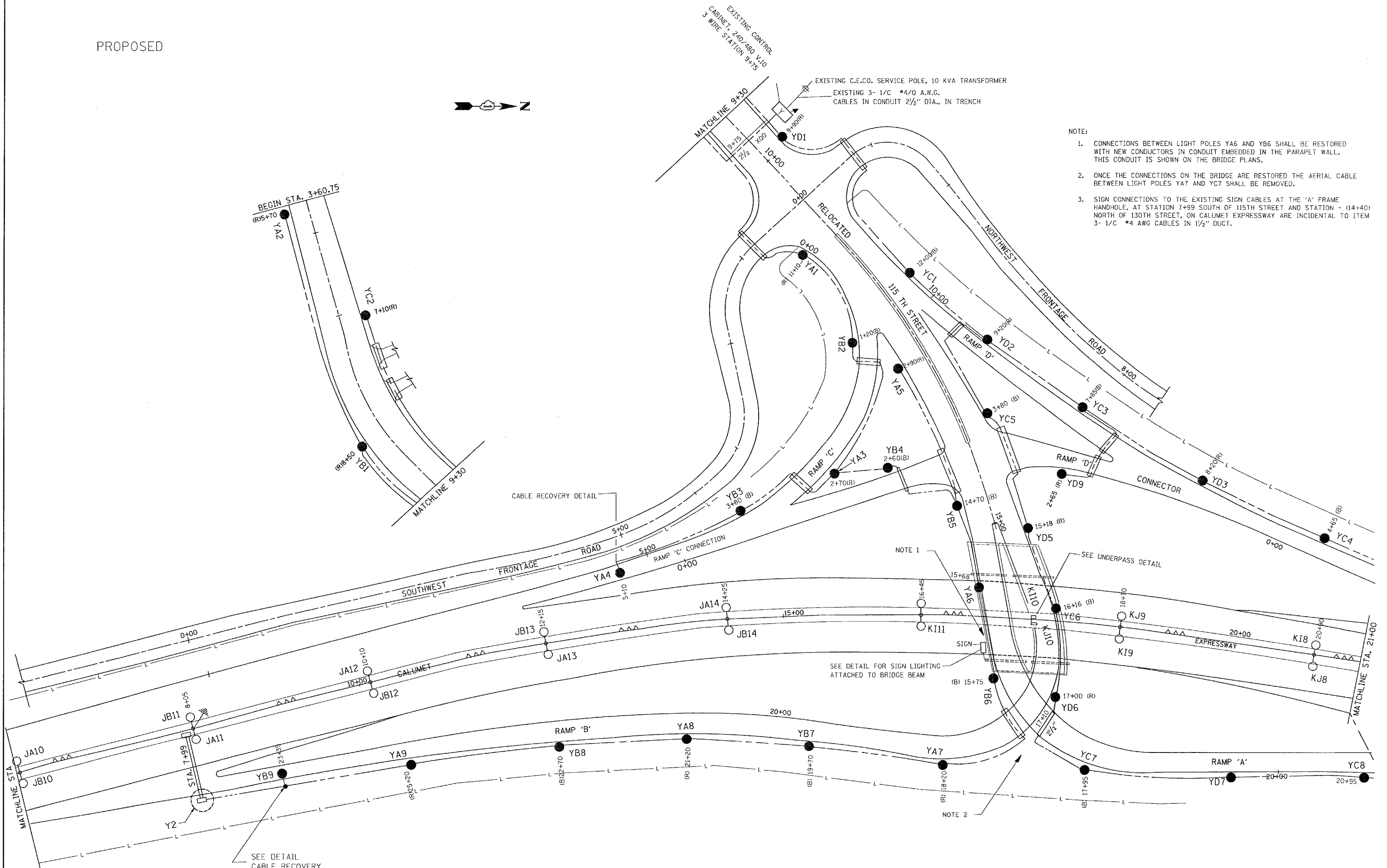


PROPOSED



- NOTE:
1. CONNECTIONS BETWEEN LIGHT POLES YA6 AND YB6 SHALL BE RESTORED WITH NEW CONDUCTORS IN CONDUIT EMBEDDED IN THE PARAPET WALL. THIS CONDUIT IS SHOWN ON THE BRIDGE PLANS.
 2. ONCE THE CONNECTIONS ON THE BRIDGE ARE RESTORED THE AERIAL CABLE BETWEEN LIGHT POLES YA7 AND YC7 SHALL BE REMOVED.
 3. SIGN CONNECTIONS TO THE EXISTING SIGN CABLES AT THE 'A' FRAME HANDHOLE, AT STATION 7+99 SOUTH OF 115TH STREET AND STATION - (14+40) NORTH OF 130TH STREET, ON CALUMET EXPRESSWAY ARE INCIDENTAL TO ITEM 3- 1/C #4 AWG CABLES IN 1/2" DUCT.

FILE NAME = c:\projects\dl19608\lighting.dgn
 USER NAME = poultierme
 PLOT SCALE = 50.0000' / 1" IN.
 PLOT DATE = 4/30/2008

DESIGNED -	REVISED -
DRAWN -	REVISED -
CHECKED -	REVISED -
DATE -	REVISED -

**STATE OF ILLINOIS
 DEPARTMENT OF TRANSPORTATION**

F.A. I-94 (BISHOP FORD EXPRESSWAY) LIGHTING PLAN
 PROPOSED 115TH STREET INTERCHANGE

SCALE: SHEET NO. 3 OF 8 SHEETS STA. TO STA.

F.A. J. RTE.	SECTION	COUNTY	TOTAL SHEETS	SHEET NO.
158E	1111-700-4B-BR	COOK	30	21
FED. ROAD DIST. NO. 1 ILLINOIS FED. AID PROJECT			CONTRACT NO. 60E12	