

F.A.P. RTE.	SECTION	COUNTY	TOTAL SHEETS	SHEET NO.
573	61 HB-I-6	KANE	14	3
FED. ROAD DIST. NO. 1		ILLINOIS	HIGHWAY PROJECT	

CONTRACT 60E17

SUMMARY OF QUANTITIES			URBAN 100% STATE	CONSTRUCTION TYPE CODE
CODE NO	ITEM	UNIT	TOTAL QUANTITIES	SN 045-0081 SFTY-2A
20200100	EARTH EXCAVATION	CU YD	14.2	14.2
50102400	CONCRETE REMOVAL	CU YD	1.9	1.9
50300255	CONCRETE SUPERSTRUCTURE	CU YD	1.9	1.9
50500405	FURNISHING AND ERECTING STRUCTURAL STEEL	POUND	9790	9790
50501110	STRUCTURAL STEEL REMOVAL	POUND	9790	9790
67000400	ENGINEER'S FIELD OFFICE, TYPE A	CAL MO	3	3
67100100	MOBILIZATION	L SUM	1	1
70100310	TRAFFIC CONTROL AND PROTECTION, STANDARD 701421	L SUM	1	1
70100405	TRAFFIC CONTROL AND PROTECTION, STANDARD 701321	EACH	1	1
70400100	TEMPORARY CONCRETE BARRIER	FOOT	300	300
*78008210	POLYUREA PAVEMENT MARKING TYPE I - LINE 4"	FOOT	1470	1470
*78200200	BIDIRECTIONAL PRISMATIC BARRIER REFLECTOR	EACH	32	32
78300100	PAVEMENT MARKING REMOVAL	SO FT	363	363
80400100	ELECTRIC SERVICE INSTALLATION	EACH	1	1
80400200	ELECTRIC UTILITY SERVICE CONNECTION	L SUM	1	1
*81800320	AERIAL CABLE, 3-1/C NO. 4 WITH MESSENGER WIRE	FOOT	1500	1500
*82103400	LUMINAIRE, SODIUM VAPOR, HORIZONTAL MOUNT, PHOTO-CELL CONTROL, 400 WATT	EACH	6	6
*84200500	REMOVAL OF EXISTING LIGHTING UNIT, SALVAGE	EACH	6	6
*84500120	REMOVAL OF ELECTRIC SERVICE INSTALLATION	EACH	1	1
X0322467	TEMPORARY INFORMATION SIGNING FOR LANE CLOSURE	SO FT	96	96
*X0323574	MAINTENANCE OF LIGHTING SYSTEM	CAL MO	6	6
*X0324311	TEMPORARY WOOD POLE, 18.30 METER, WITH 4.5 METER MAST ARM (INSTALL ONLY)	EACH	6	6
X0712400	TEMPORARY PAVEMENT	SO YD	65	65
X8900005	TEMPORARY BRIDGE TRAFFIC SIGNAL INSTALLATION	EACH	1	1

SUMMARY OF QUANTITIES			URBAN 100% STATE	CONSTRUCTION TYPE CODE
CODE NO	ITEM	UNIT	TOTAL QUANTITIES	SN 045-0081 SFTY-2A
*XX006937	GROUND ROD, 5/8" DIA. X 10 FT.	EACH	8	8
Z0003600	BEAM STRAIGHTENING	L SUM	1	1
Z0030250	IMPACT ATTENUATORS, TEMPORARY (NON-REDIRECTIVE), TEST LEVEL 3	EACH	2	2
Z0073300	TEMPORARY SHORING AND CRIBBING	L SUM	1	1
Z0073351	TEMPORARY SLAB SUPPORT SYSTEM	L SUM	1	1
*X0326117	TEMPORARY WOOD POLE, 18.30 METER (INSTALL ONLY)	EACH	2	2
X0324001	REMOVE WOOD POLE AND SALVAGE	EACH	2	2

REVISIONS	
NAME	DATE

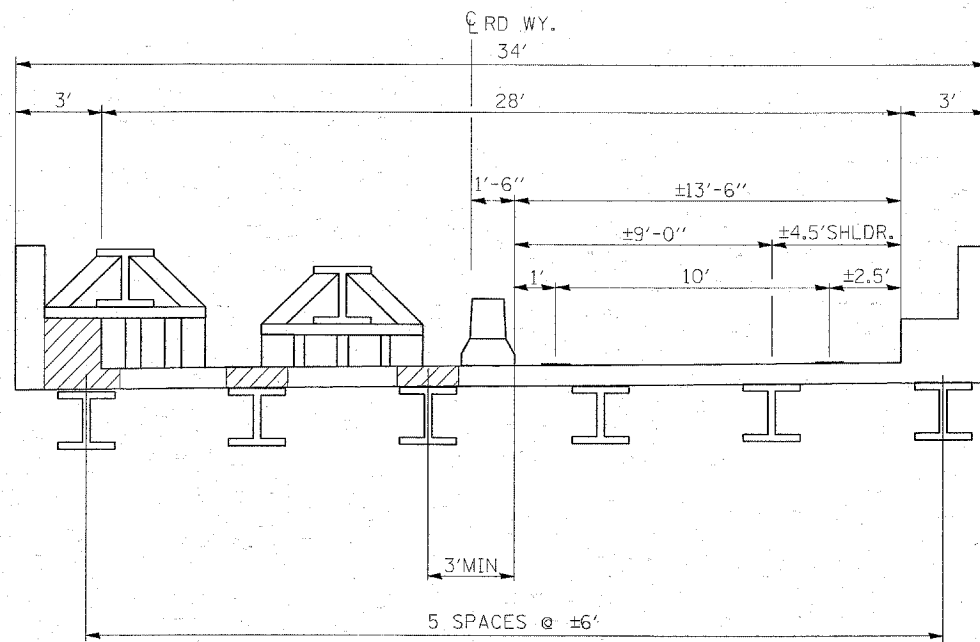
ILLINOIS DEPARTMENT OF TRANSPORTATION

SUMMARY OF QUANTITIES

△ Rev. 6-4-08
*Specialty Items

PLOT DATE: 4/4/2008

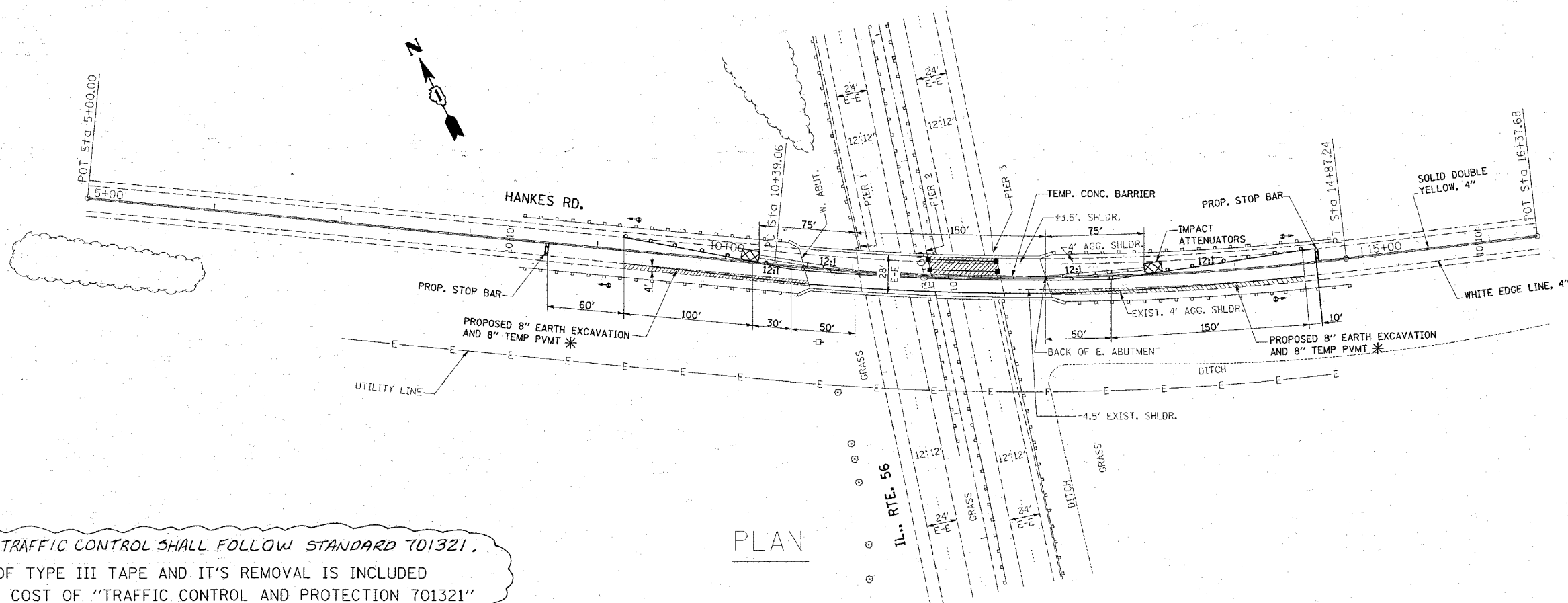
4/4/2008 11:30:00 AM



CROSS SECTION
(LOOKING EAST)

HOT-MIX ASPHALT MIXTURE REQUIREMENTS				
		MIXTURE TYPE	AC TYPE	AIR VOIDS
TEMPORARY PAVEMENT	TOP 2"	HOT-MIX ASPHALT SURFACE COURSE, MIX "D", N50 (IL 9.5 mm)	PG 64-22	4% @ 50 GYR
	BOTT. 6"	HOT-MIX ASPHALT BINDER COURSE, IL-19.0, N50 (IN 2 LIFTS)	PG 64-22**	4% @ 50 GYR

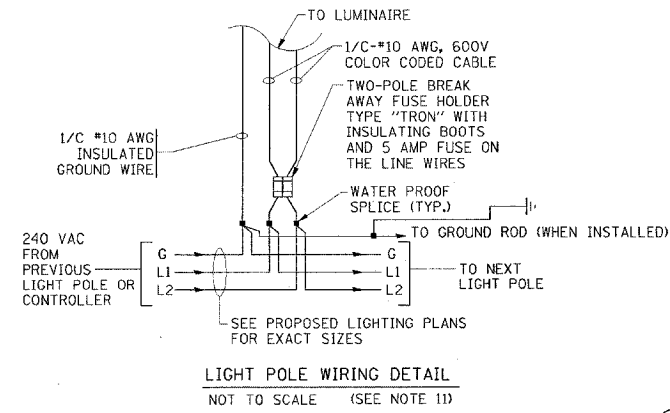
THE UNIT WEIGHT USED TO CALCULATE ALL HMA SURFACE MIXTURE QUANTITIES IS 112 LBS/SQ YD/IN.
** WHEN RAP EXCEEDS 20%, THE NEW ASPHALT BINDER IN THE MIX SHALL BE PG 58-22.



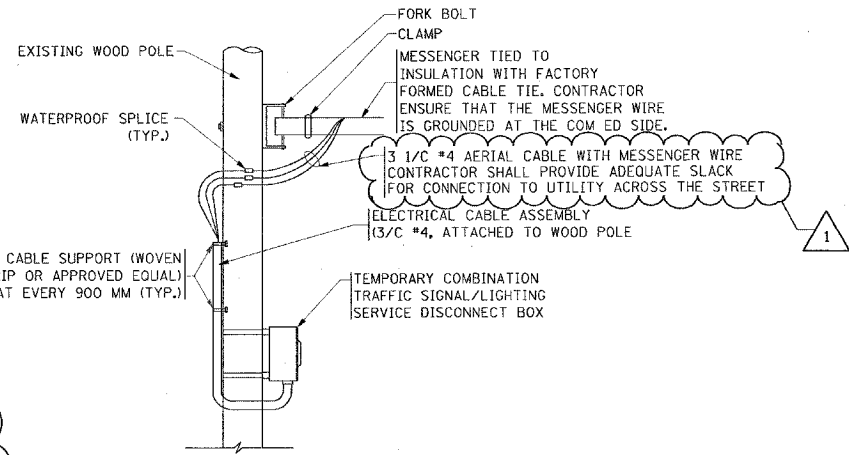
PLAN

NOTE: TRAFFIC CONTROL SHALL FOLLOW STANDARD 701321.
COST OF TYPE III TAPE AND IT'S REMOVAL IS INCLUDED IN THE COST OF "TRAFFIC CONTROL AND PROTECTION 701321"

Rev. 6-4-08



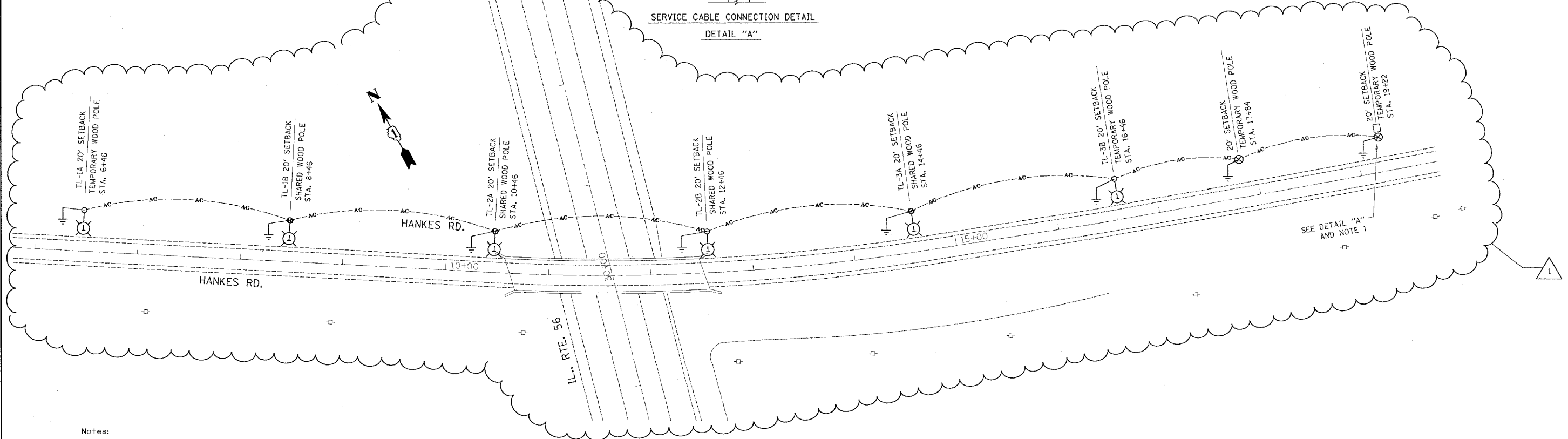
LIGHT POLE WIRING DETAIL
NOT TO SCALE (SEE NOTE 1)



SERVICE CABLE CONNECTION DETAIL
DETAIL "A"

BILL OF MATERIALS, ELECTRICAL PAY ITEMS

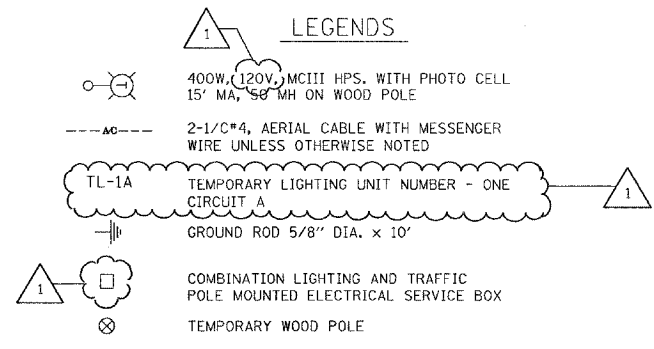
Pay Code	Item Description	Unit	Quantity
80400100	ELECTRIC SERVICE INSTALLATION	Each	1
80400200	ELECTRIC UTILITY SERVICE CONNECTION	Each	1
X006937	GROUND ROD, 5/8" DIA. X 10 FT	Each	8
8180019	AERIAL CABLE, 2-1/2 NO. 4 WITH MESSENGER WIRE	Foot	1500
82106400	LUMINAIRE, SODIUM VAPOR, HORIZONTAL MOUNT, 400 WATT (INSTALL ONLY)	Each	6
X0324311	TEMPORARY WOOD POLE, 18.3 METER, WITH 4.5 METER MAST ARM (INSTALL ONLY)	Each	6
X0326117	TEMPORARY WOOD POLE, 18.3 METER (INSTALL ONLY)	Each	2
84200500	REMOVAL OF EXISTING LIGHTING UNIT, SALVAGE	Each	6
84500120	REMOVAL OF ELECTRIC SERVICE INSTALLATION	Each	1
X0324001	REMOVE WOOD POLE AND SALVAGE	Each	2



Notes:

- Temporary combination service disconnect box shall feed a temporary traffic signal controller and the temporary lighting units.
- A lighting controller is not proposed. Each lighting unit shall be controlled by a photo cell mounted on the associated luminaire with the lighting circuit fed directly from the temporary service disconnect box.
- The materials and installation methods shall comply with the latest codes, standards and ordinances of Federal, State and Local governing bodies having jurisdiction. All works shown on the plans and described elsewhere shall also conform to the latest National Electrical Code.
- All electrical equipment, components and devices shall be U/L listed.
- All material parts of the light poles shall be grounded and bonded conforming to NEC Article 250. The equipment ground shall be part of the temporary light pole pay item.
- The light pole setback from the edge of travel pavement shall be 20' unless the light pole is behind guardrail. The light poles when installed behind the guardrail should have at least eight foot setback from the back of the shoulder and or as directed by the engineer.
- The plan shows four shared wooden poles that are common for lighting and traffic systems. The electrical contractor shall install only the luminaire and mast arm on the shared poles. The traffic system contractor should supply, and install these 60' Class 4 wooden poles. The electrical summary of quantities excludes these poles.
- The temporary light poles should have identification numbers as shown on the plans.
- Cost of splices and mounting hardware shall be included in the unit price for aerial cable.
- The contractor shall be responsible for any damage to the equipment or devices and not limited to the light system. The contractor shall not install damaged equipment or devices, instead the contractor shall replace it with new ones at no cost to IDOT and or as directed by the Engineer.
- The contractor shall splice aerial cable at the light pole using heat shrinkable caps with the factory applied waterproof sealant. The installation and required material shall be part of the Light Pole pay item.
- It is the contractor's responsibility to contact J.U.L.I.E. prior to the start of construction and coordinate location of existing underground utilities. The contractor shall locate, flag and protect all underground utilities prior to and during construction. Any damage to existing utilities during construction shall be repaired immediately at no cost to IDOT.
- The material quantities as shown in the electrical summary of quantities are approximations only. It is the contractor's responsibility to field verify all quantities prior to ordering materials.
- The contractor shall coordinate construction and staging activities being done in the same area by the utility companies or other contractors and setup coordination meetings if necessary without any additional financial compensation.
- The utility company shall be contacted as soon as possible and notified of the pending electrical connections and installations to ensure continuity of night time hours of lighting operation.
- All areas disturbed under this contract shall be restored to the original condition or better to the satisfaction of the Engineer.

LEGENDS



1 REVISED 5/19/08

FILE NAME = c:\projects\133988\Lighting.dgn	USER NAME = poulema	DESIGNED -	REVISED -	STATE OF ILLINOIS DEPARTMENT OF TRANSPORTATION	HANKES RD. OVER IL RTE. 56			F.A. RTE. 573	SECTION 61 HB-1-6	COUNTY KANE	TOTAL SHEETS 14	SHEET NO. 10
	PLLOT SCALE = 50.0000' / IN.	DRAWN -	REVISED -		SCALE: 1"=50'	SHEET NO. OF	SHEETS STA.	TO STA.	CONTRACT NO. 60E17			
	PLLOT DATE = 5/2/2008	CHECKED -	REVISED -		FED. ROAD DIST. NO. 1 ILLINOIS FED. AID PROJECT							
		DATE -	REVISED -									