

F.A.P. RTE.	SECTION	COUNTY	TOTAL SHEETS	SHEET NO.
559	582 R (1 & 3) RS-1	COOK	27	1
FED. ROAD DIST. NO. _____		ILLINOIS CONTRACT NO. 60E21		

**STATE OF ILLINOIS
DEPARTMENT OF TRANSPORTATION
DIVISION OF HIGHWAYS**

**PROPOSED
HIGHWAY PLANS**

**FAP 559 (IL 58)
SECTION: 582R (1 & 3) RS-1
BASSWOOD ROAD TO I-290
RESURFACING (3P)
PROJECT: F-0559(008)
COOK COUNTY
C-91-342-08**

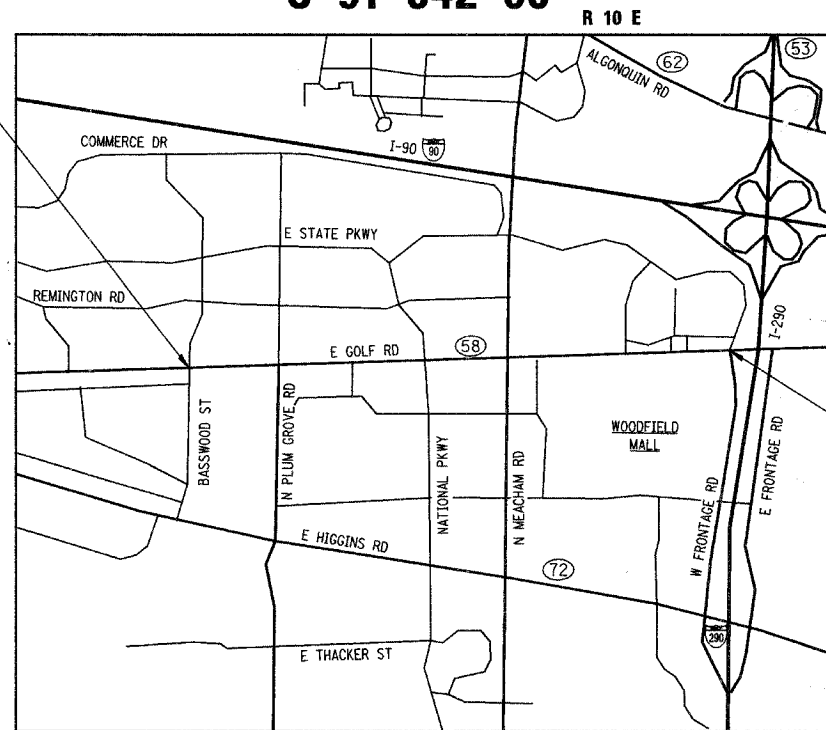
FOR INDEX OF SHEETS, SEE SHEET NO. 2

THIS IMPROVEMENT IS LOCATED
WITHIN THE VILLAGE OF SCHAUMBURG

TRAFFIC DATA

2005 ADT - 45,900
POSTED SPEED LIMIT - 40 MPH

BEGIN IMPROVEMENT
EB STA. 17 + 85.00
WB STA. 17 + 95.00

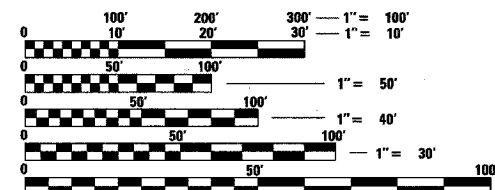
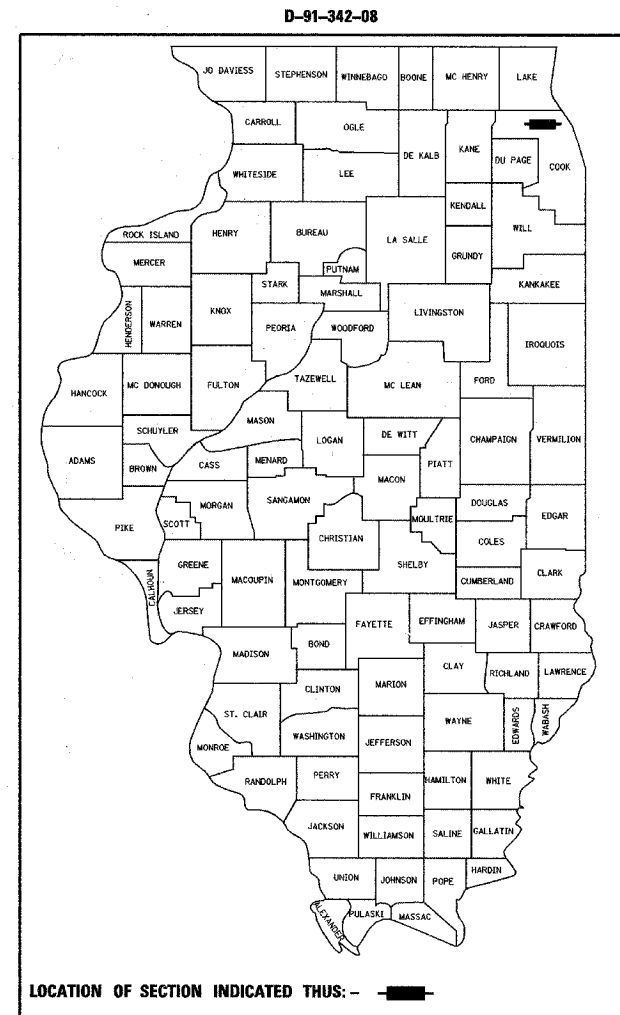


END IMPROVEMENT
STA. 114 + 80.00

SCHAUMBURG TOWNSHIP

LOCATION MAP
1" = 1500'

GROSS AND NET LENGTH OF PROJECT = 9695 FT = 1.84 MI.



FULL SIZE PLANS HAVE BEEN PREPARED USING STANDARD
ENGINEERING SCALES. REDUCED SIZED PLANS WILL NOT
CONFORM TO STANDARD SCALES. IN MAKING MEASUREMENTS
ON REDUCED PLANS, THE ABOVE SCALES MAY BE USED.

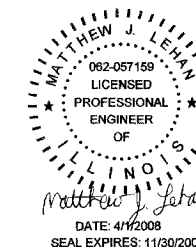
J.U.L.I.E.
JOINT UTILITY LOCATION INFORMATION FOR EXCAVATION
1-800-892-0123
OR 811

Ciorba Group, Inc.

DESIGN FIRM
REGISTRATION NUMBER

184-001016

CONSULTING ENGINEERS
SUITE 402, 5507 NORTH CUMBERLAND AVE
CHICAGO, ILLINOIS 60656 ☎ (773) 775-4009



STATE OF ILLINOIS
DEPARTMENT OF TRANSPORTATION
DIVISION OF HIGHWAYS

SUBMITTED APRIL 1, 2008

Diana M. O'Keefe
DEPUTY DIRECTOR OF HIGHWAYS, REGION ENGINEER

May 9, 2008
Eric E. Harnik
INTERIM ENGINEER OF DESIGN AND ENVIRONMENT

May 9, 2008
Christine M. Reed
DIRECTOR OF HIGHWAYS, CHIEF ENGINEER

**PRINTED BY THE AUTHORITY
OF THE STATE OF ILLINOIS**

CONTRACT NO. 60E21

DISTRICT 1 DESIGN PLAN PREPARATION ENGINEER: K. ENG (847)705-4247