

THERMOPLASTIC PAVEMENT MARKING LEGEND

- ① 4" SINGLE SOLID YELLOW LINE
 - ② 4" DOUBLE SOLID YELLOW LINE (11" C-C)
 - ③ 4" WHITE LANE LINE (10' LINE, 30' SPACE)
 - ④ 4" YELLOW LANE LINE (10' LINE, 30' SPACE)
 - ⑤ 6" SOLID WHITE LINE
 - ⑥ 6" SOLID WHITE TURN LANE LINE
 - ⑦ 8" SOLID WHITE ISLAND LINE
 - ⑧ 12" WHITE CROSSWALK LINE
 - ⑨ 12" SOLID YELLOW DIAGONAL LINES
 - ⑩ 24" SOLID WHITE STOP BAR
 - ⑪ LETTERS AND SYMBOLS
 - ⑫ RAISED REFLECTIVE PAVEMENT MARKERS
- ◀ ONE-WAY CRYSTAL
 - ▲ ONE-WAY AMBER
 - ◆ TWO-WAY AMBER

**U.S. RTE. 12/20
(95TH STREET)**

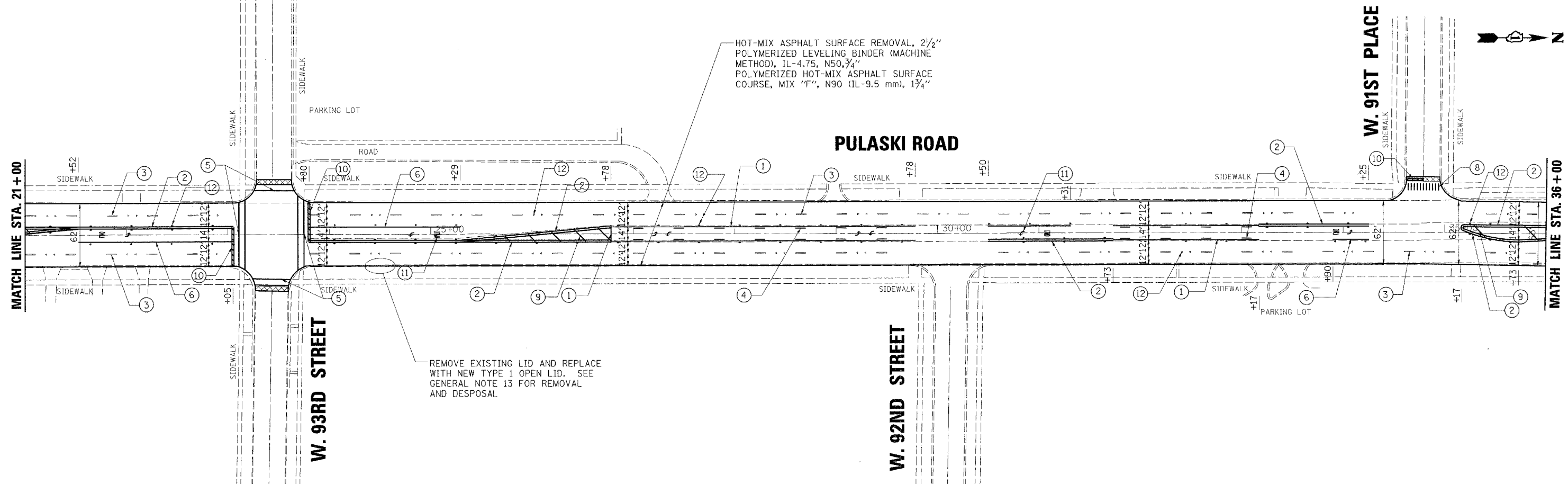
PROJECT BEGINS
STA. 10+45

PULASKI ROAD

W. 94TH STREET

MATCH LINE STA. 21+00

HOT-MIX ASPHALT SURFACE REMOVAL, 2 1/2"
POLYMERIZED LEVELING BINDER (MACHINE METHOD), IL-4.75, N50, 3/4"
POLYMERIZED HOT-MIX ASPHALT SURFACE COURSE, MIX "F", N90 (IL-9.5 mm), 1 3/4"



MATCH LINE STA. 21+00

PULASKI ROAD

W. 92ND STREET

W. 91ST PLACE

MATCH LINE STA. 36+00

HOT-MIX ASPHALT SURFACE REMOVAL, 2 1/2"
POLYMERIZED LEVELING BINDER (MACHINE METHOD), IL-4.75, N50, 3/4"
POLYMERIZED HOT-MIX ASPHALT SURFACE COURSE, MIX "F", N90 (IL-9.5 mm), 1 3/4"

REMOVE EXISTING LID AND REPLACE WITH NEW TYPE 1 OPEN LID. SEE GENERAL NOTE 13 FOR REMOVAL AND DESPOSAL



PLOT DATE = 4/18/2008
 FILE NAME = ka\11225507\civil\plans\11225507-PLAN01.dgn
 PLOT SCALE = 1"=50'
 MODEL =
 USER =
 DATE =

rjngroup
Excellence through Ownership

200 West Front Street
Wheaton, IL 60187

DESIGNED - LCM	REVISED -
DRAWN - JMT	REVISED -
CHECKED - BLB	REVISED -
DATE - 3/28/08	REVISED -

**STATE OF ILLINOIS
DEPARTMENT OF TRANSPORTATION**

**PULASKI ROAD
EXISTING & PROPOSED ROADWAY PLAN**

SCALE: 1"=50' SHEET NO. 1 OF 2 SHEETS STA. 8+00 TO STA. 36+00

F.A.P. RTE. 368	SECTION 1718.3 RS	COUNTY COOK	TOTAL SHEETS 22	SHEET NO. 6
CONTRACT NO. 60E28				
FED. ROAD DIST. NO. 1 (ILLINOIS) FED. AID PROJECT				