

DISTRICT ONE BUREAU OF MAINTENANCE: J. STUMPNER
MAINTENANCE LANDSCAPE DESIGNER: R. WANNER / T. JACKSON (847) 705-4171

ROUTE	SECTION	COUNTY	TOTAL SHEETS	SHEET NUMBER
VARIOUS	2008-008 DTR	VARIOUS	4	1

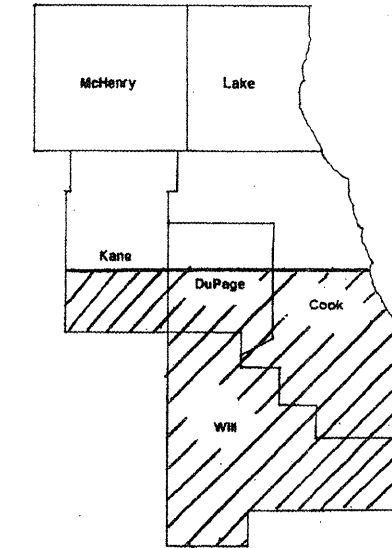
CONTRACT 60E32
D-91-357-08

STATE OF ILLINOIS
DEPARTMENT OF TRANSPORTATION
DIVISION OF HIGHWAYS
DISTRICT ONE
PROPOSED HIGHWAY PLANS

ROUTE: VARIOUS
SECTION 2008-008 DTR
DEAD TREE REMOVAL
VARIOUS COUNTIES
C-91-357-08

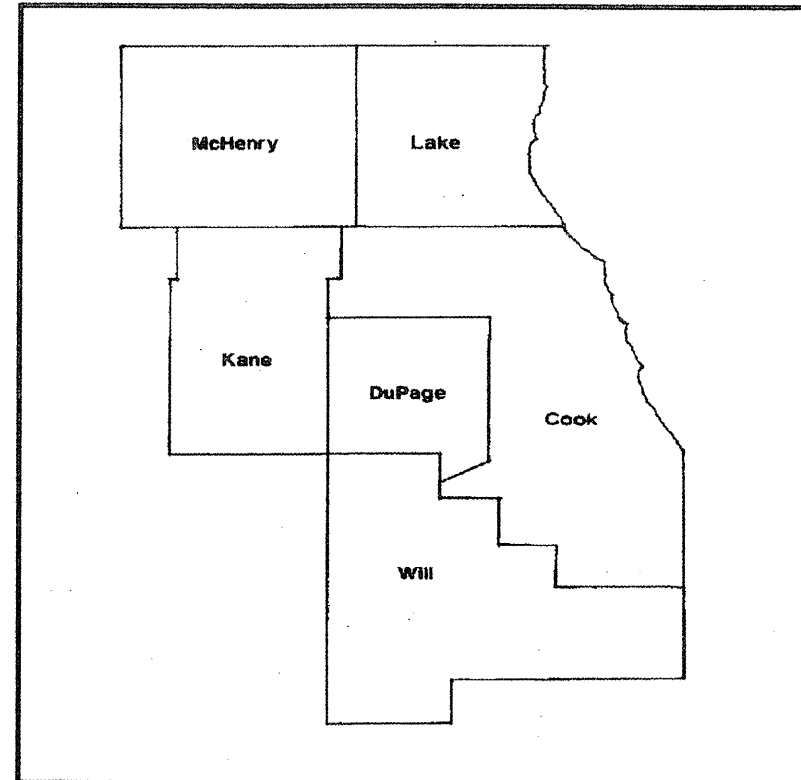
INDEX OF SHEETS

- 1) COVER SHEET, INDEX OF SHEETS
- 2) SUMMARY OF QUANTITIES, STATE STANDARDS
- 3) SAMPLE WORK ORDER
- 4) TC-17 TRAFFIC CONTROL DETAIL FOR FREEWAY SHOULDER CLOSURES AND PARTIAL RAMP CLOSURES



LOCATION OF IMPROVEMENT INDICATED THUS: 

**IMPROVEMENT IS IN VARIOUS
LOCATIONS WITHIN DISTRICT
ONE**



STATE OF ILLINOIS
DEPARTMENT OF TRANSPORTATION
DIVISION OF HIGHWAYS

SUBMITTED: APRIL 3, 2008
Diane M. O'Keefe
DEPUTY DIRECTOR OF HIGHWAYS, REGION ENGINEER

May 9, 2008
Eric E. Harm
INTERIM ENGINEER OF DESIGN AND ENVIRONMENT

May 9, 2008
Christine M. Reed
DIRECTOR OF HIGHWAYS, CHIEF ENGINEER

**PRINTED BY THE AUTHORITY
OF THE STATE OF ILLINOIS**

J.U.L.I.E.: JOINT UTILITY LOCATION
INFORMATION FOR EXCAVATION
(800) 892-0123 OR 811

CONTRACT 60E32

ROUTE	SECTION	COUNTY	TOTAL SHEETS	SHEET NUMBER
VARIOUS	2000-008 DTR	VARIOUS	4	2

CONTRACT 60E32

SUMMARY OF QUANTITIES

URBAN
100% STATE

CODE NUMBER	DESCRIPTION	UNIT	CONTRACT MAINT FUND	TOTAL
20100110	TREE REMOVAL (6 TO 15 UNITS DIAMETER)	UNIT	4000	4000
20100210	TREE REMOVAL (OVER 15 UNITS DIAMETER)	UNIT	7250	7250
67100100	MOBILIZATION	L SUM	1	1
X0325897	SELECTIVE ELM CLEARING ^{To}	UNIT	3	3
X2010100	TREE LIMB REMOVAL (4 TO 10 INCHES DIAMETER)	EACH	25	25
X2010200	TREE LIMB REMOVAL (OVER 10 INCHES DIAMETER)	EACH	25	25
X2010300	TREE REMOVAL (UNDER 6 UNITS DIAMETER)	UNIT	100	100
X2010400	STUMP REMOVAL ONLY	UNIT	50	50
Z0064800	SELECTIVE CLEARING	UNIT	5	5

STATE STANDARDS

701001-01 701006-02 701101-01

701106-01 701301-02

ILLINOIS DEPARTMENT OF TRANSPORTATION

SUMMARY OF QUANTITIES

DEAD AND DISEASED TREE REMOVAL

Rev.

ROUTE	SECTION	COUNTY	TOTAL SHEETS	SHEET NUMBER
VARIOUS	2008-008 DTR	VARIOUS	4	3

CONTRACT 60E32

ID: _____

DEAD AND DISEASED TREE REMOVAL REQUEST

REQUESTED BY: _____ DATE OF REQUEST: _____

YARD: _____ TELEPHONE: () _____

(Please complete information when request for tree removal is from outside the Bureau of Maintenance)

NAME: _____

ADDRESS: _____

TELEPHONE: () _____

LOCATION OF DEAD/DISEASED TREE(S)
(Please fill out completely to expedite locating the repair)

COUNTY: _____ TOWN/CITY: _____

MARKED/NAMED ROUTE: _____

DIRECTIONS FROM NEAREST MAJOR
CROSS ROAD OR MAJOR LANDMARK: _____

SIDE OF ROADWAY: _____

ADDITIONAL DIRECTIONS TO TREE: _____

**PLEASE INDICATE APPROXIMATE SIZE AND
NUMBER OF TREES BASED ON VISUAL ESTIMATE**

COMMENTS: _____
(Size/Number)

OFFICE USE ONLY

DATE INSPECTED: _____ TYPE OF REMOVAL: _____

DTR #: _____

CONTRACT #: _____

WORK ORDER #: _____ NOTES: _____

POSTED IN SUMMARY: _____

RETURN REQUESTS TO CONTRACTS SECTION

s:\wpl\contracts\forms\gr60110e.doc

10-28-98

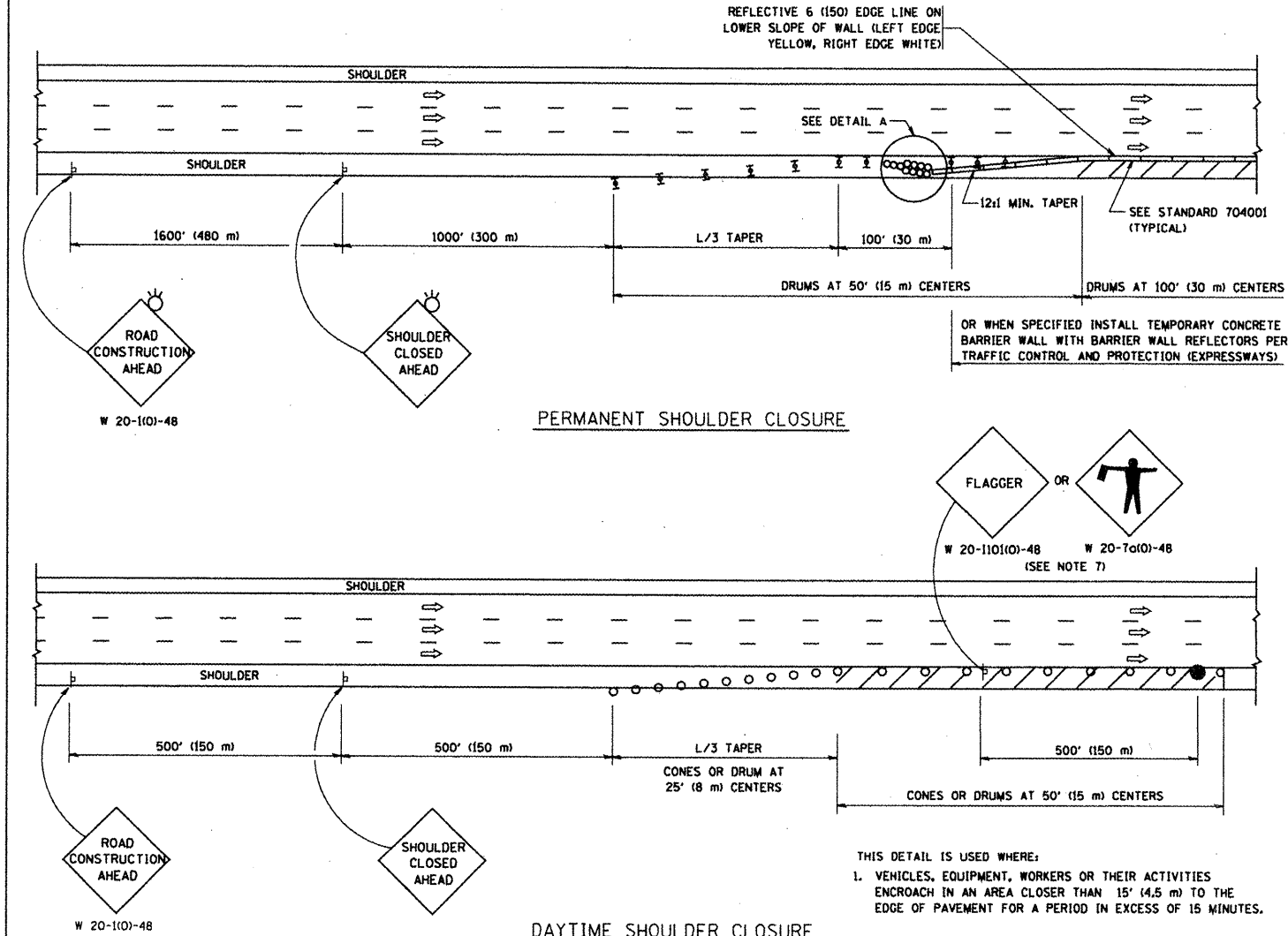
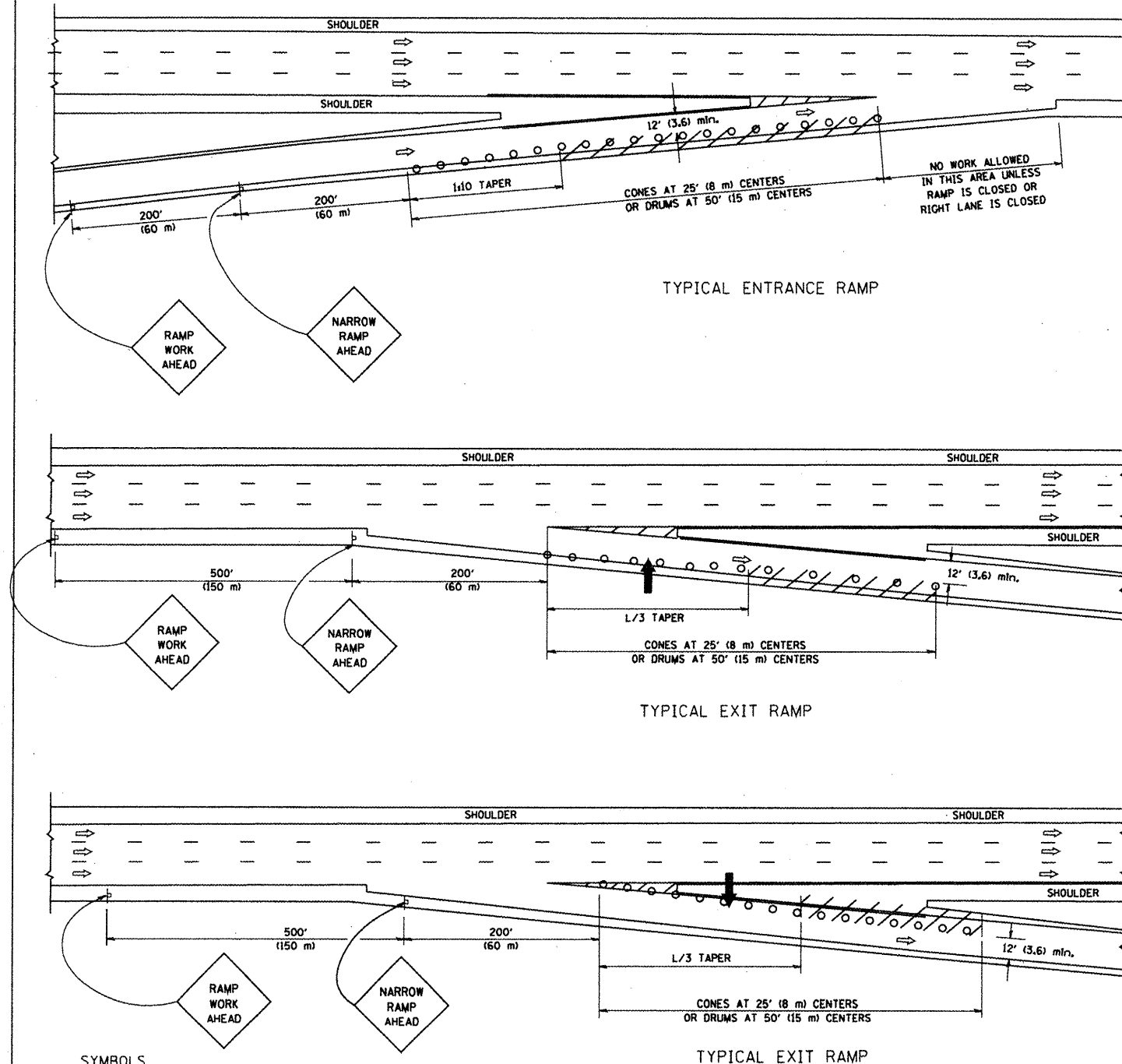
ILLINOIS DEPARTMENT OF TRANSPORTATION

DEAD AND DISEASED TREE REMOVAL

SAMPLE WORK ORDER

PARTIAL RAMP CLOSURE DETAILS

SHOULDER CLOSURE DETAILS



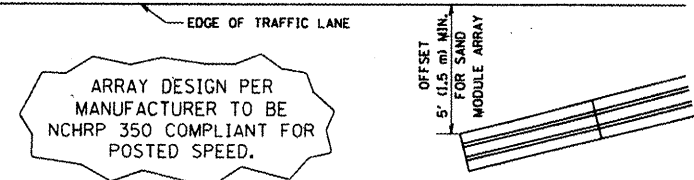
SYMBOLS

- ARROWBOARD
- WORK AREA
- SIGN ON PORTABLE OR PERMANENT SUPPORT
- FLAGGER WITH CONTROL SIGN
- TYPE II BARRICADE, DRUM OR VERTICAL BARRICADE WITH STEADY BURN MONO-DIRECTIONAL LIGHT
- CONE, DRUM OR BARRICADE

GENERAL NOTES

1. THE "L" DISTANCE EQUALS:

SPEED LIMIT	FORMULAS
45 mph (80 km/h) OR GREATER:	METRIC ENGLISH $L=0.65(W/S)$ $L=(W/S)$
W = WIDTH OF OFFSET IN FEET (METERS)	
S = NORMAL POSTED SPEED MPH (KM/H)	
2. PLASTIC DRUMS WITH HIGH PERFORMANCE REFLECTIVE SHEETING AND STEADY BURNING LIGHTS ARE REQUIRED FOR ALL NIGHTTIME CLOSURES.
3. ALL SIGNS SHALL BE POST MOUNTED IF THE CLOSURE TIME EXCEEDS FOUR DAYS.
4. FLASHING LIGHTS SHALL BE USED DURING THE HOURS OF DARKNESS AND SHALL BE INSTALLED ABOVE THE FIRST TWO SETS OF SIGNS.
5. THE IMPACT ATTENUATOR, TEMPORARY IS NOT REQUIRED WHEN THE TEMPORARY CONCRETE BARRIER WALL IS PROTECTED BY OR IS TIED INTO THE EXISTING GUARDRAIL. IF OFFSET IS LESS THAN 5 FEET USE "TRAFFIC BARRIER TERMINAL, TYPE III, TEMPORARY" DEVICE TO MEET NCHRP350 FOR POSTED SPEED.
6. AUTHORIZATION FROM THE DISTRICT'S BUREAU OF TRAFFIC IS REQUIRED FOR ALL FREEWAY CLOSURES.
7. THE FLAGGER AND FLAGGER SIGN ARE REQUIRED AT THE ABOVE WORK SITES WHEN:
 - a. FOUR OR MORE WORK VEHICLES ENTER THE TRAFFIC LANES IN A ONE HOUR PERIOD.
 - b. THE WORK ACTIVITY REQUIRES FREQUENT ENCROACHMENT INTO THE LANE OPEN TO TRAFFIC.
 THE FLAGGER SHALL BE STATIONED APPROXIMATELY 100' (30 m) TO 200' (60 m) IN ADVANCE OF THE WORKERS.



DETAIL "A"
IMPACT ATTENUATOR, TEMPORARY
(SEE NOTE 5)

ALL DIMENSIONS ARE IN INCHES (MILLIMETERS) UNLESS OTHERWISE SHOWN.

FILE NAME = W:\distrad\22x34\col7.dgn

USER NAME = geglienobt	DESIGNED -	REVISED - J.A.F. 12-02
PLOT SCALE = 50.0000' / IN.	DRAWN - D.W.S.	REVISED - 04-03
PLOT DATE = 1/4/2008	CHECKED -	REVISED - J.A.F. 12-06
	DATE - 11-96	REVISED - S.P.B. 01-07

STATE OF ILLINOIS
DEPARTMENT OF TRANSPORTATION

TRAFFIC CONTROL DETAILS FOR FREEWAY SHOULDER CLOSURES AND PARTIAL RAMP CLOSURES			
SCALE: NONE	SHEET NO. 1 OF 1 SHEETS	STA. TO STA.	

F.A. RTE.	SECTION	COUNTY	TOTAL SHEETS	SHEET NO.
	2008-008 DTR		4	4
	TC-17	VAR.		
FED. ROAD DIST. NO. 1 ILLINOIS FED. AID PROJECT				