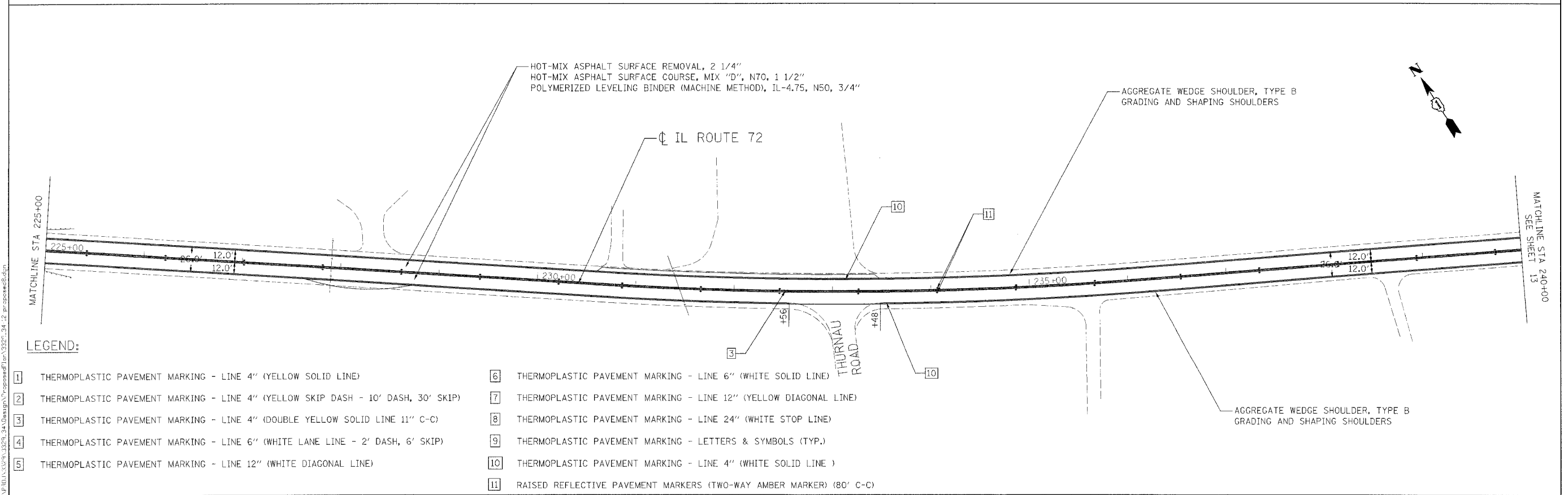


LEGEND:

- | | | | |
|---|--|----|---|
| 1 | THERMOPLASTIC PAVEMENT MARKING - LINE 4" (YELLOW SOLID LINE) | 6 | THERMOPLASTIC PAVEMENT MARKING - LINE 6" (WHITE SOLID LINE) |
| 2 | THERMOPLASTIC PAVEMENT MARKING - LINE 4" (YELLOW SKIP DASH - 10' DASH, 30' SKIP) | 7 | THERMOPLASTIC PAVEMENT MARKING - LINE 12" (YELLOW DIAGONAL LINE) |
| 3 | THERMOPLASTIC PAVEMENT MARKING - LINE 4" (DOUBLE YELLOW SOLID LINE 11" C-C) | 8 | THERMOPLASTIC PAVEMENT MARKING - LINE 24" (WHITE STOP LINE) |
| 4 | THERMOPLASTIC PAVEMENT MARKING - LINE 6" (WHITE LANE LINE - 2' DASH, 6' SKIP) | 9 | THERMOPLASTIC PAVEMENT MARKING - LETTERS & SYMBOLS (TYP.) |
| 5 | THERMOPLASTIC PAVEMENT MARKING - LINE 12" (WHITE DIAGONAL LINE) | 10 | THERMOPLASTIC PAVEMENT MARKING - LINE 4" (WHITE SOLID LINE) |
| | | 11 | RAISED REFLECTIVE PAVEMENT MARKERS (TWO-WAY AMBER MARKER) (80' C-C) |



LEGEND:

- | | | | |
|---|--|----|---|
| 1 | THERMOPLASTIC PAVEMENT MARKING - LINE 4" (YELLOW SOLID LINE) | 6 | THERMOPLASTIC PAVEMENT MARKING - LINE 6" (WHITE SOLID LINE) |
| 2 | THERMOPLASTIC PAVEMENT MARKING - LINE 4" (YELLOW SKIP DASH - 10' DASH, 30' SKIP) | 7 | THERMOPLASTIC PAVEMENT MARKING - LINE 12" (YELLOW DIAGONAL LINE) |
| 3 | THERMOPLASTIC PAVEMENT MARKING - LINE 4" (DOUBLE YELLOW SOLID LINE 11" C-C) | 8 | THERMOPLASTIC PAVEMENT MARKING - LINE 24" (WHITE STOP LINE) |
| 4 | THERMOPLASTIC PAVEMENT MARKING - LINE 6" (WHITE LANE LINE - 2' DASH, 6' SKIP) | 9 | THERMOPLASTIC PAVEMENT MARKING - LETTERS & SYMBOLS (TYP.) |
| 5 | THERMOPLASTIC PAVEMENT MARKING - LINE 12" (WHITE DIAGONAL LINE) | 10 | THERMOPLASTIC PAVEMENT MARKING - LINE 4" (WHITE SOLID LINE) |
| | | 11 | RAISED REFLECTIVE PAVEMENT MARKERS (TWO-WAY AMBER MARKER) (80' C-C) |

Ciorba Group, Inc.
 CONSULTING ENGINEERS
 5607 North Cumberland Avenue, Suite 402
 Chicago, Illinois 60658
 Tel. 773.775.4009 Fax 773.775.4014

USER NAME = mbelog	DESIGNED - WBL	REVISED -
PLOT SCALE = 50.0000 1" = 50'	DRAWN - WBL	REVISED -
PLOT DATE = 4/8/2008	CHECKED - MJL	REVISED -
	DATE - 4/7/2008	REVISED -

**STATE OF ILLINOIS
 DEPARTMENT OF TRANSPORTATION**

**ILLINOIS ROUTE 72
 FRENCH ROAD TO US ROUTE 20
 PROPOSED ROADWAY AND PAVEMENT MARKING PLAN**

F.A.P. R.T.E. 957	SECTION Y-RS-2	COUNTY KANE	TOTAL SHEETS 23	SHEET NO. 12
FED. ROAD DIST. NO. - ILLINOIS FED. AID PROJECT			CONTRACT NO. 60E43	

FILE NAME = N:\P30\JAN\31\329_34\Output\response\plan\329_34_12_proposed.dgn