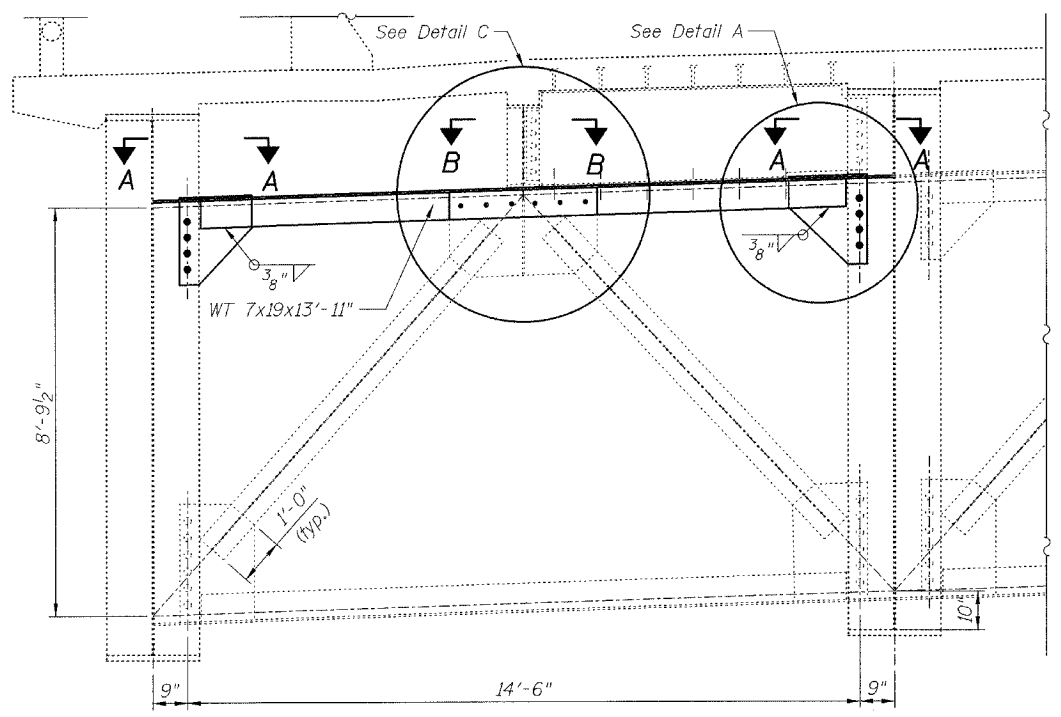


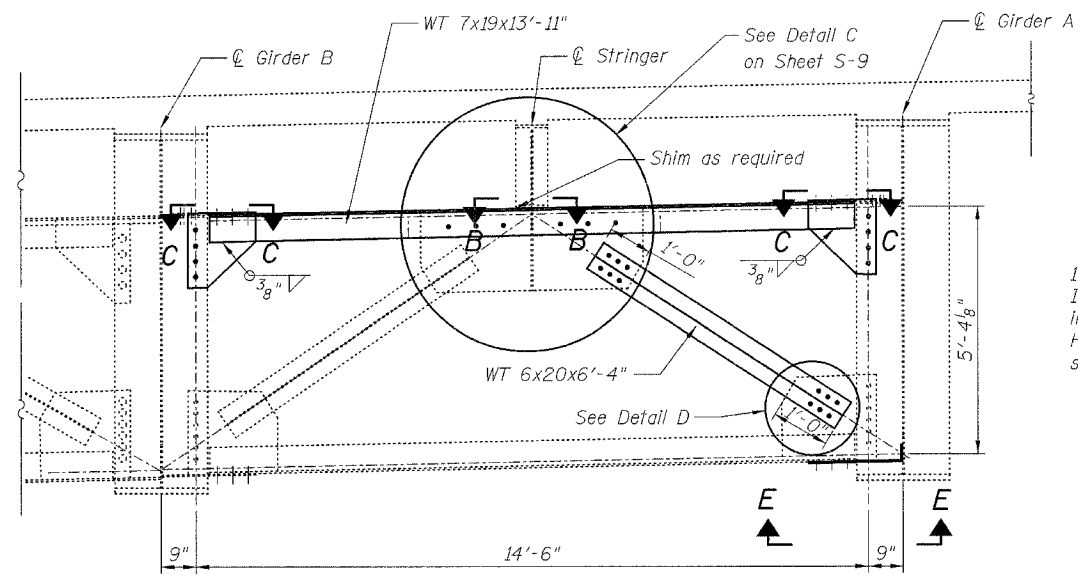
STATE OF ILLINOIS
DEPARTMENT OF TRANSPORTATION

ROUTE NO.	SECTION	COUNTY	TOTAL SHEETS	SHEET NO.	SHEET NO. S-8 S-16 SHEETS
FAU 2697	2008-018 BR	COOK	22	11	
FED. ROAD DIST. NO. 7		ILLINOIS	FED. AID PROJECT		

Contract # 60E47

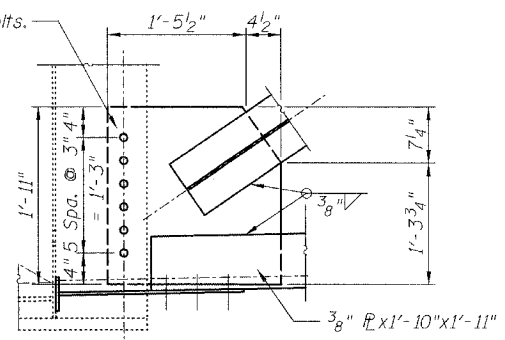


DETAIL 1
PIER 4 CROSS FRAME REPAIRS
Looking South

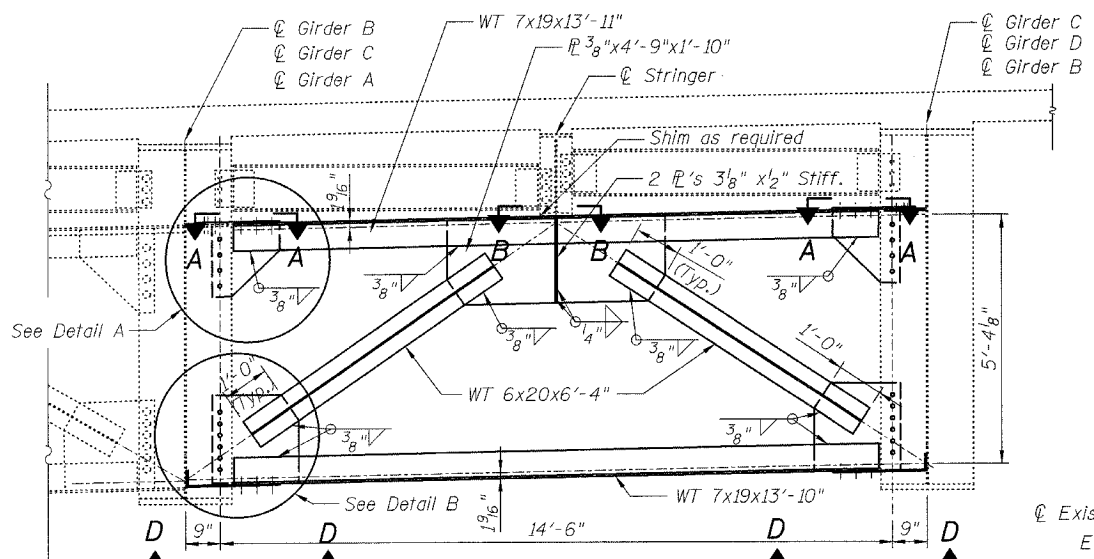


DETAIL 2
PIER 1 CROSS FRAME REPAIRS
Looking North

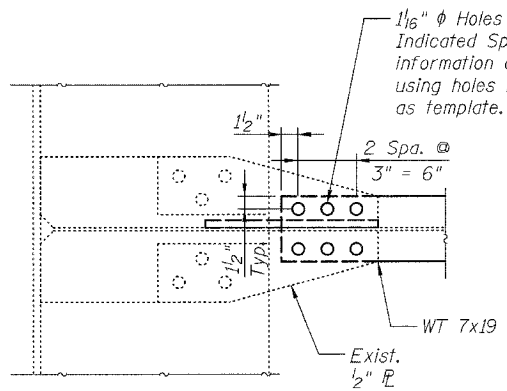
1/16" ϕ Holes for 7/8" ϕ H.S. Bolts. Indicated Spacings are for information only. Field Drill Holes using holes in existing stiffener as template.



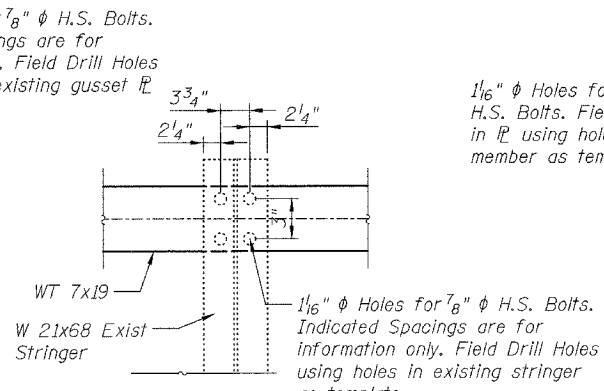
DETAIL B



DETAIL 3
CROSS FRAME REPAIRS
Typical for: Girder B-C, N. Abutment
Girder C-D, N. Abutment
Girder A-B, N. Side Hinge #3

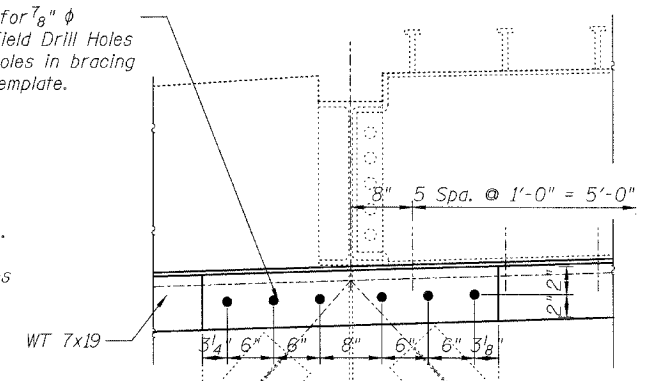


SECTION C-C

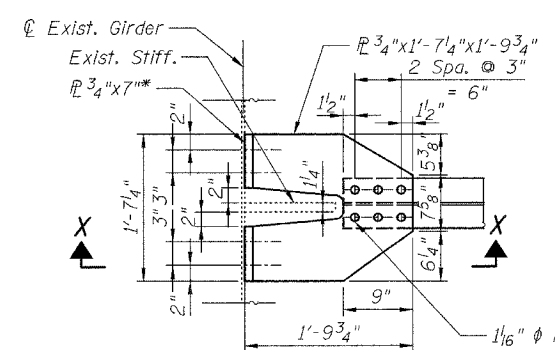


SECTION B-B

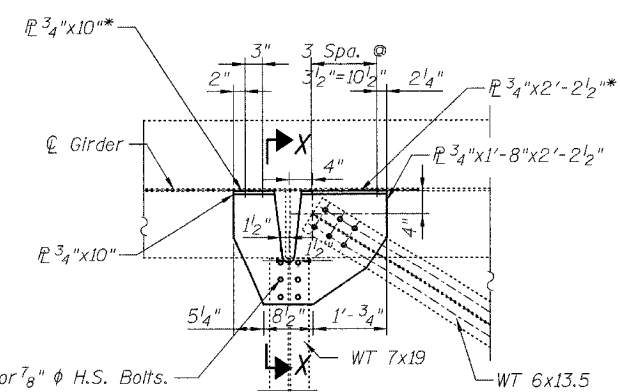
1/16" ϕ Holes for 7/8" ϕ H.S. Bolts. Field Drill Holes in PL using holes in bracing member as template.



DETAIL C

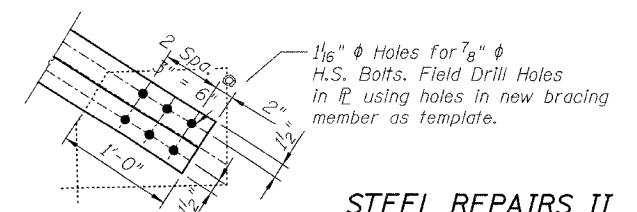


VIEW D-D



VIEW E-E

* See Section X-X for the third dimension



DETAIL D

- NOTES:**
- Quantity for steel shown on sheet S-7
 - See sheet S-10 for Section A-A and Detail A.
 - See sheet S-12 for Section X-X.

STEEL REPAIRS II
FAU 2697 WILLOW SPRINGS ROAD
OVER DES PLAINES RIVER,
CHICAGO SANITARY & SHIP CANAL,
ILLINOIS AND MICHIGAN CANAL,
AND ICG RAILROAD
COOK COUNTY
S.N. 016-0540

DESIGNED	B. Sauter
CHECKED	E. Mroczek
DRAWN	R. Danley
CHECKED	B. Sauter

CG **Clorba Group, Inc.**
CONSULTING ENGINEERS
5507 North Cumberland Avenue, Suite 402 Chicago, Illinois 60656
Tel. 773.775.4009 Fax 773.775.4014 Email chicago@clorba.com

4/17/2008 rdanley n:\proj\3329\3329_30\design\structural\steel_repairs\3329_30_08 Steel Repairs 2.sht