

F.A.P. RTE.	SECTION	COUNTY	TOTAL SHEETS	SHEET NO.
342	(530 & 531) RS-4	COOK	31	1
FED. ROAD DIST. NO. 1	ILLINOIS	CONTRACT NO. 62079		

31+8-39

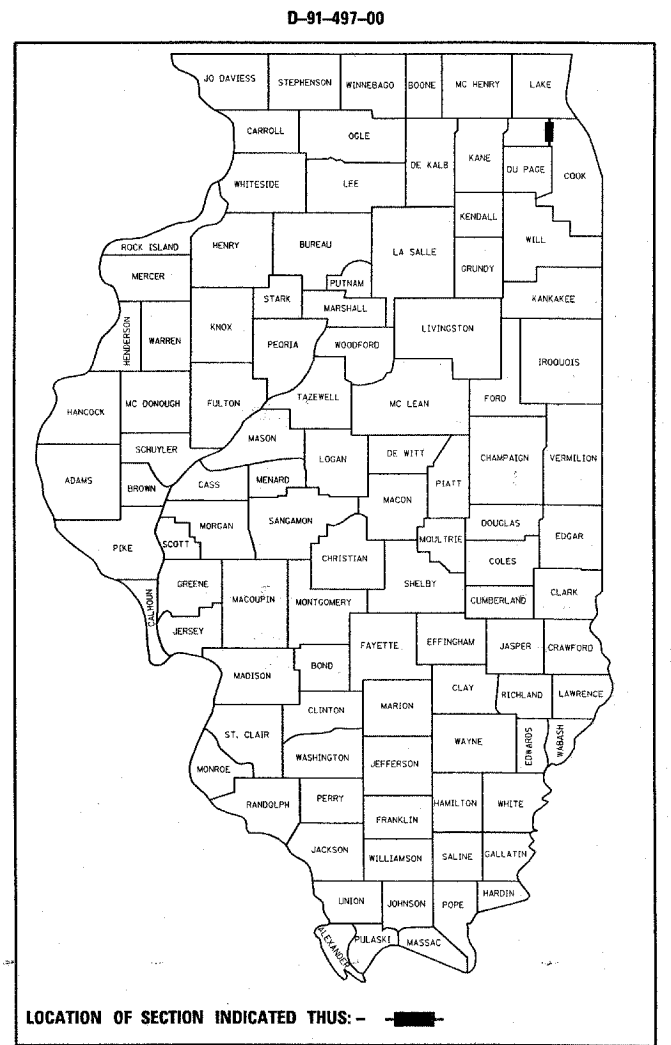
STATE OF ILLINOIS
DEPARTMENT OF TRANSPORTATION
DIVISION OF HIGHWAYS

**PROPOSED
HIGHWAY PLANS**

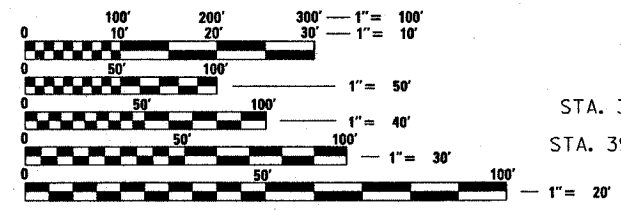
FAP RTE. 342: IL RTE. 53 (EXTENSION)
LAKE-COOK RD. TO US 12 (RAND ROAD)
AND RAMPS AT LAKE-COOK RD.
SECTION: (530 & 531) RS-4
PROJECT NO. *ACF-0342(008)*
RESURFACING (MAINTENANCE)
COOK COUNTY
C-91-497-00

FOR INDEX OF SHEETS, SEE SHEET NO. 2

THE IMPROVEMENT IS LOCATED
IN THE VILLAGES OF PALATINE,
ARLINGTON HEIGHTS, AND
UNINCORPORATED COOK COUNTY



LOCATION OF SECTION INDICATED THUS: - -

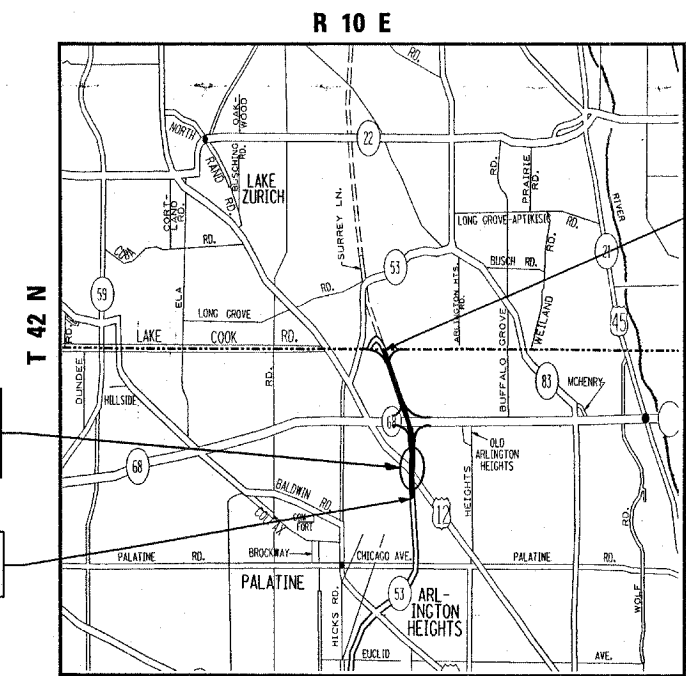


FULL SIZE PLANS HAVE BEEN PREPARED USING STANDARD
ENGINEERING SCALES. REDUCED SIZED PLANS WILL NOT
CONFORM TO STANDARD SCALES. IN MAKING MEASUREMENTS
ON REDUCED PLANS, THE ABOVE SCALES MAY BE USED.

J.U.L.I.E.
JOINT UTILITY LOCATION INFORMATION FOR EXCAVATION
1-800-892-0123
OR 811

PROJECT ENGINEER ROBERT BORO (847) 705-4178
PROJECT MANAGER KEN ENG

CONTRACT NO. 62079



PALATINE TOWNSHIP

GROSS LENGTH OF IMPROVEMENT = 12,050 LF = 2.282 MILES
NET LENGTH OF IMPROVEMENT = 11,771.63 LF = 2.229 MILES

PROJECT ENDS
STA. 504+00=STA. 0+00 (NB) AND
STA. 503+45.63=STA. 20+00 (SB)

TRAFFIC DATA
2006 ADT= 98,800
POSTED SPEED LIMIT 55 TO 45 mph



STATE OF ILLINOIS
DEPARTMENT OF TRANSPORTATION
DIVISION OF HIGHWAYS

SUBMITTED APRIL 16, 2008

Diana M. O'Keefe
DEPUTY DIRECTOR OF HIGHWAYS, REGION ENGINEER

May 9, 2008
Eric E. Harms
INTERIM ENGINEER OF DESIGN AND ENVIRONMENT

May 9, 2008
Christine M. Reed
DIRECTOR OF HIGHWAYS, CHIEF ENGINEER

PRINTED BY THE AUTHORITY
OF THE STATE OF ILLINOIS