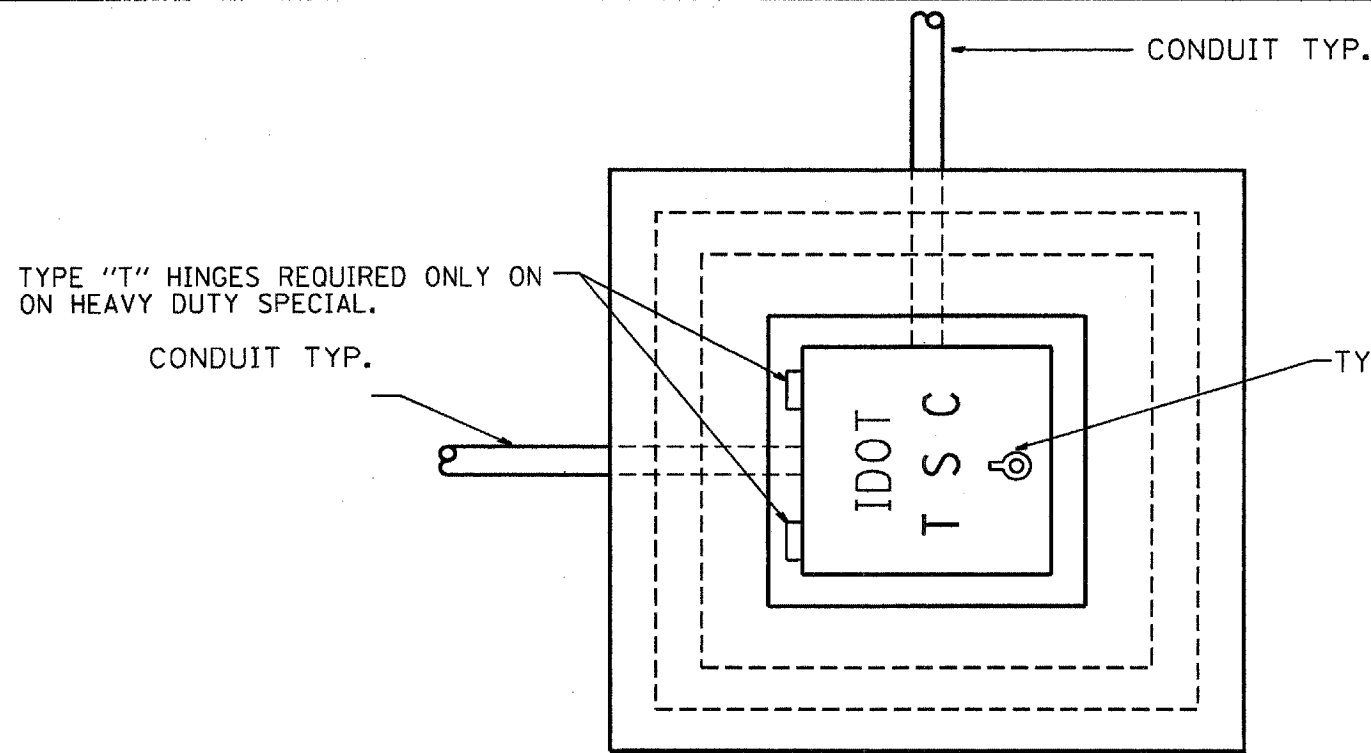


F.A.P. RTE.	SECTION	COUNTY	TOTAL SHEETS	SHEET NO.
342	(520852)K-4	Cook	31	204
STA.		TO STA.		
FED. ROAD DIST. NO.		ILLINOIS FED. AID PROJECT		
CONTRACT # 62079				



TYPE "T" HINGES REQUIRED ONLY ON ON HEAVY DUTY SPECIAL.

CONDUIT TYP.

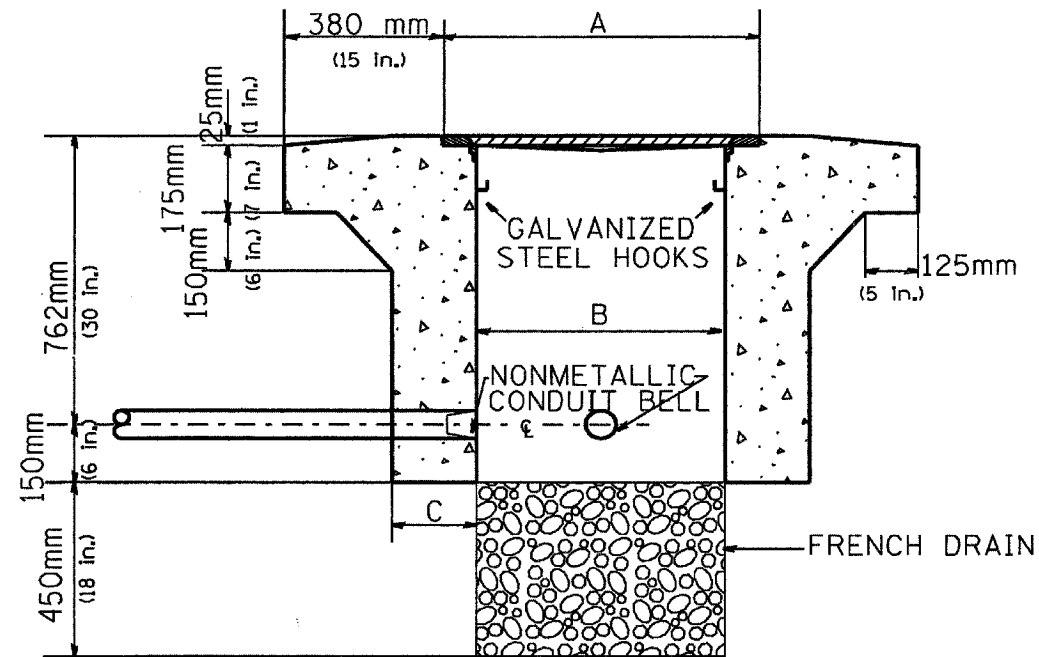
TYPE "G" HANDLE FOR BOTH HDHH AND HDHH SPECIAL

PLAN

HEAVY DUTY HANDHOLE MINIMUM DIMENSIONS (UNHINGED)

A	711 mm (28")
B	559 mm (22")
C	200 mm (8")

(FRAME AND COVER 118 Kg. (260 LBS.) MIN.)



ELEVATION

HEAVY DUTY HANDHOLE SPECIAL MINIMUM DIMENSIONS

A	800 mm (31.5")
B	762 mm (30")
C	250 mm (10")

(FRAME AND COVER 184 Kg. (405 LBS.))

PC CONCRETE - HEAVY DUTY HAND HOLE

REVISIONS		ILLINOIS DEPARTMENT OF TRANSPORTATION TRAFFIC SYSTEMS CENTER
NAME	DATE	
R.L.	4-97	PC CONCRETE - HEAVY DUTY HAND HOLE

SCALE: VERT. NONE  
HORIZ. DATE 9-11-96

DRAWN BY G.M.  
CHECKED BY R.L.

RD-TYPMET.DGN  
RF\*

V1=40015