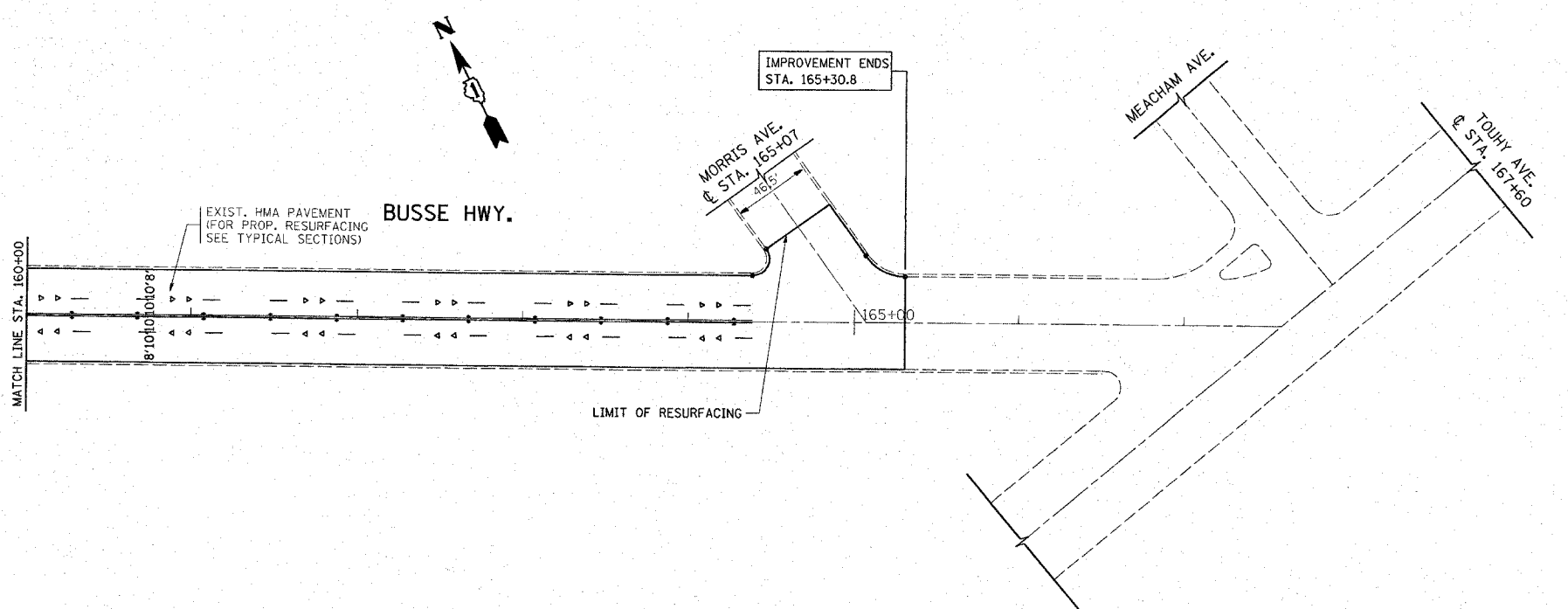
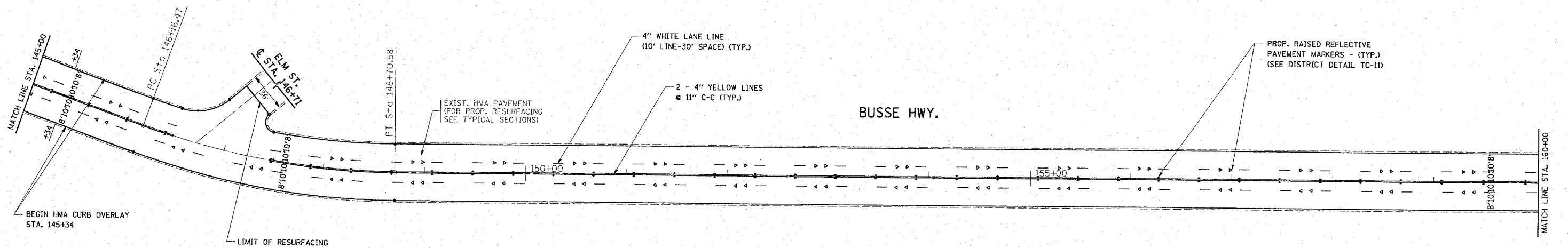
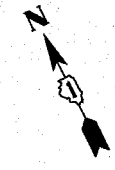


EXIST. CURVE 7
 PI STA. = 147+44.80
 $\Delta = 19^\circ 44' 19''$ (LT)
 $D = 7^\circ 46' 04''$
 $R = 737.61'$
 $T = 128.33'$
 $L = 254.11'$
 $E = 11.08'$
 P.C. STA. = 146+16.47
 P.T. STA. = 148+70.58



NOTES

1. ALL DIMENSIONS ARE TO EDGE OF PAVEMENT OR LANE.
2. ALL FINAL PAVEMENT MARKINGS ARE THERMOPLASTIC
3. FOR PAVEMENT MARKING DETAILS ALONG PARKING LANES, SEE "TYPICAL PAVEMENT MARKING FOR PARKING SPACES" ON SHEET NO. 11.
4. FOR DETAILS OF RAISED REFLECTIVE PAVEMENT MARKERS, SEE "DISTRICT ONE TYPICAL APPLICATIONS RAISED REFLECTIVE PAVEMENT MARKERS (SNOW-PLOW RESISTANT)." DUAL ONE-WAY CRYSTAL MARKERS SHALL BE USED ON SKIP-DASH LANE LINES.
5. AT LOCATIONS WHERE DRIVEWAY REMOVAL AND REPLACEMENT IS NEEDED THE HOT-MIX ASPHALT SURFACE COURSE WILL BE OF THE SAME MIX USED THROUGHOUT THE ROADWAY RESURFACING IMPROVEMENT (MIX "D", N70) AT THE THICKNESS SPECIFIED IN THE DRIVEWAY DETAIL.
6. IMPROVEMENT LIMITS SHOULD END WHERE THE CITY OF PARK RIDGE'S IMPROVEMENT LIMITS BEGIN, ALLOWING NO GAPS, JUST NORTHWEST OF THE INTERSECTION OF BUSSE HIGHWAY AND TOUHY AVENUE.

FILE NAME =
 c:\projects\dl31301\veh_rdwg.dgn

USER NAME = bauerdl	DESIGNED -	REVISED -
PLOT SCALE = 50.0000' / IN.	DRAWN -	REVISED -
PLOT DATE = 3/11/2008	CHECKED -	REVISED -
	DATE -	REVISED -

**STATE OF ILLINOIS
 DEPARTMENT OF TRANSPORTATION**

**FAU 3512 BUSSE HIGHWAY
 RESURFACING ROADWAY PLAN & PAVEMENT MARKING PLAN**

SCALE: 1"=50' SHEET NO. 6 OF 6 SHEETS STA. TO STA.

F.A.U. RTE.	SECTION	COUNTY	TOTAL SHEETS	SHEET NO.
3512	86Y-RS-3	COOK	35	14
FED. ROAD DIST. NO. 1 ILLINOIS FED. AID PROJECT			CONTRACT NO. 62272	