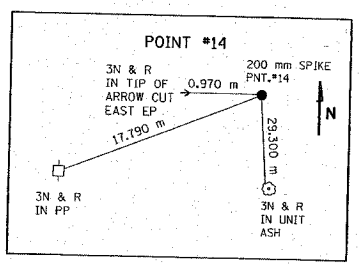
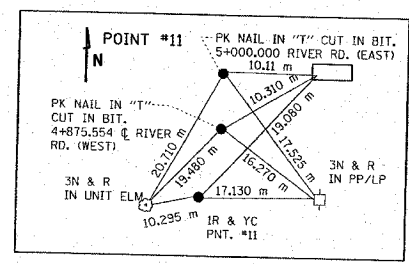
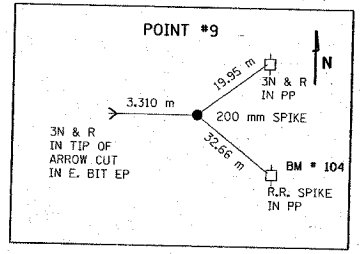


REF-10004
REF-10005

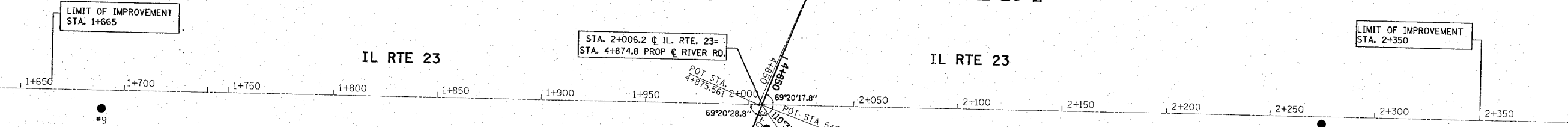
F.A.P. RTE.	SECTION	COUNTY	TOTAL SHEETS	SHEET NO.
324	24N-1	McHENRY	82	70
STA. 24N-1		TO STA.		
FED. ROAD DIST. NO.		ILLINOIS FED. AID PROJECT		



PROP. CURVE P-RIV-B-2
 PI STA = 4+843.208
 $\Delta = 2^\circ 26' 54''$ (L.T.)
 R = 2,750.000 m
 T = 58.763 m
 L = 117.507 m
 E = 0.628 m
 T.R. = --- m
 S.E. RUN. = --- m
 P.C. STA = 4+784.445
 P.T. STA = 4+901.953

EXIST. CURVE RIV-1
 PI STA = 4+625.746
 $\Delta = 0^\circ 56' 27''$ (L.T.)
 R = 5,918.587 m
 T = 48.590 m
 L = 97.178 m
 E = 0.199 m
 T.R. = --- m
 S.E. RUN. = --- m
 P.C. STA = 4+577.156
 P.T. STA = 4+674.334

PROP. CURVE P-RIV-B-1
 PI STA = 4+625.750
 $\Delta = 0^\circ 56' 26''$ (L.T.)
 R = 5,918.587 m
 T = 48.587 m
 L = 97.171 m
 E = 0.199 m
 T.R. = --- m
 S.E. RUN. = --- m
 P.C. STA = 4+577.163
 P.T. STA = 4+674.334



BM #104
 R.R. SPIKE IN POWER POLE
 ± 9.0 m RT. STA. 1+689 @
 PNT. #9, ELEV. 247.435

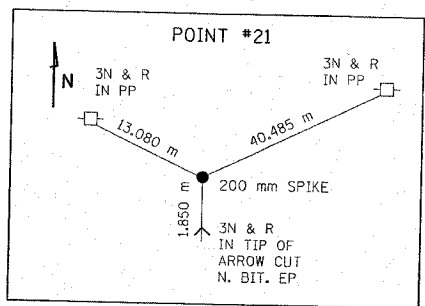
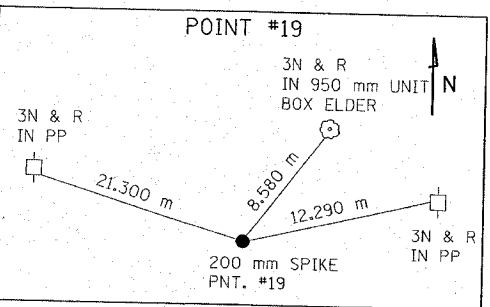
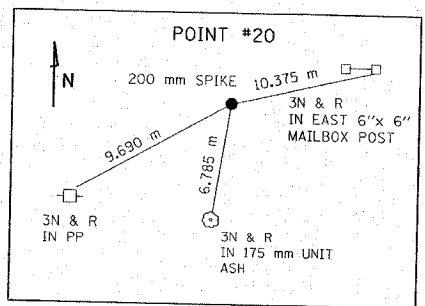
BM #114
 CUT LT. (NORTH) EP
 STA. 4+800 RIVER RD.
 @ PNT. #20, ELEV. 253.460

BM #106
 CUT CENTER OF 2.4 H.W.
 IN N.E. CORNER IL 23 & RIVER RD. @
 PNT. #11, ELEV. 254.575

BM #115
 CUT LT. (NORTH) EP
 STA. 5+150 RIVER RD.
 @ PNT. #21, ELEV. 254.485

BM #108
 CUT RT. (EAST) EOP
 STA. 2+275 @ PNT. #14,
 ELEV. 259.885

BM #113
 CUT RT. (SOUTH) EP
 STA. 4+700 RIVER RD.
 @ PNT. #19, ELEV. 253.345



REVISIONS	
NAME	DATE

ILLINOIS DEPARTMENT OF TRANSPORTATION
**IL. RTE. 23 AT RIVER RD.
 ALIGNMENT AND TIES PLAN**
 SCALE: VERT. 1:1000
 HORIZ. DRAWN BY