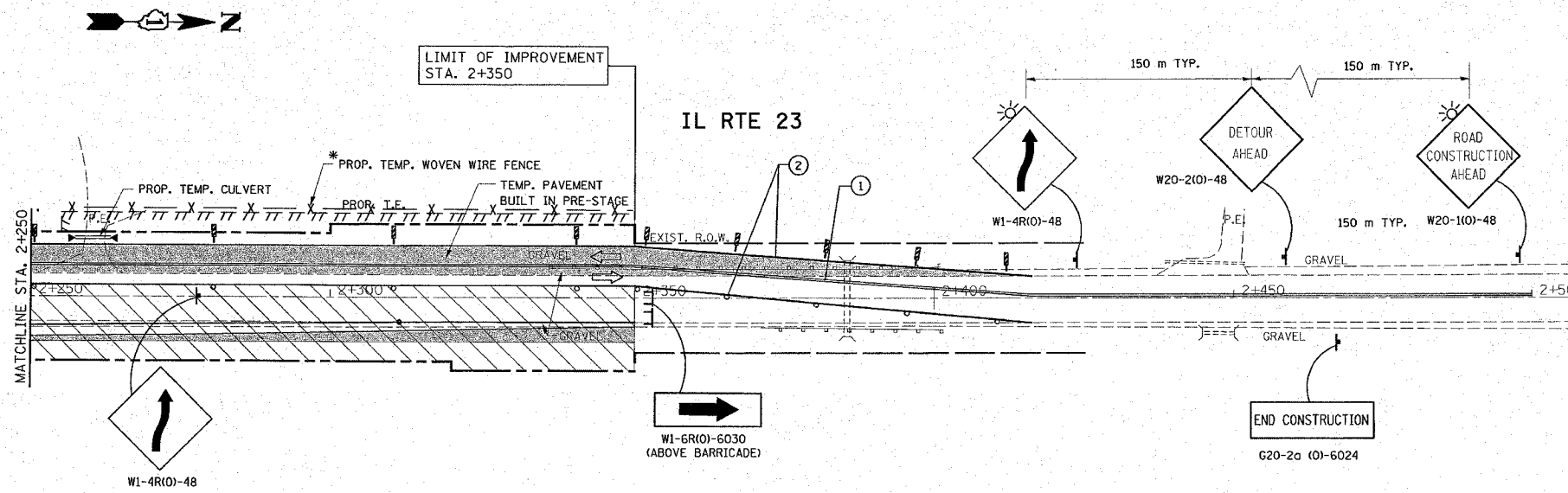


*REF-stg03

CONTRACT# 62296

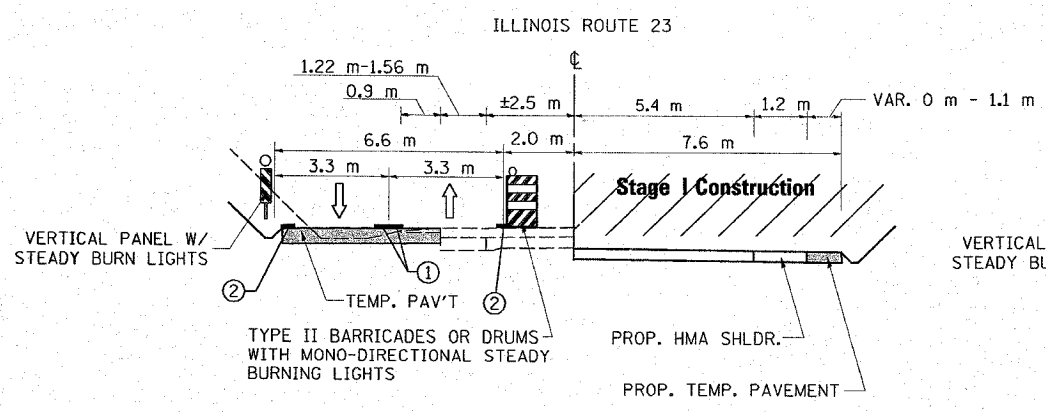
F.A.P. RTE.	SECTION	COUNTY	TOTAL SHEETS	SHEET NO.
324	24N-1	McHENRY	82	14
STA.		TO STA.		
FED. ROAD DIST. NO.		ILLINOIS FED. AID PROJECT		



* NOTE:
TEMP. WOVEN WIRE FENCE WILL BE
INSTALLED DURING CONSTRUCTION AND
WILL BE REMOVED AT THE END OF CONSTRUCTION

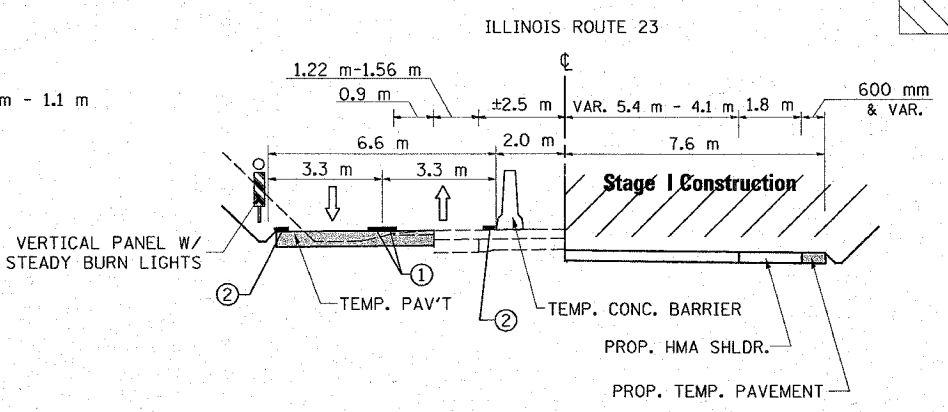
LEGEND

- TEMP. PAVEMENT
- TEMP. CONCRETE BARRIER
- WORK AREA
- TYPE III BARRICADES
- SIGN
- VERTICAL PANEL W/ STEADY BURN LIGHTS
- TYPE II BARRICADES OR DRUMS WITH MONO-DIRECTIONAL STEADY BURNING LIGHTS
- DIRECTION OF TRAFFIC
- TEMPORARY PAVEMENT MARKING, DOUBLE YELLOW CENTER LINE 100 mm @ 275 mm C-C
- TEMPORARY PAVEMENT MARKING, WHITE SOLID (100 mm) EDGE LINE
- TEMPORARY PAVEMENT MARKING, WHITE SOLID (600 mm) STOP BAR
- PAVEMENT MARKING TAPE, TYPE III, 100 mm



STAGE I CONSTRUCTION

STA. ±1+980



STAGE I CONSTRUCTION

STA. 2+050 TO STA. 2+195

REVISIONS		ILLINOIS DEPARTMENT OF TRANSPORTATION IL. RTE. 23 @ RIVER RD. SUGGESTED MAINTENANCE OF TRAFFIC PLANS STAGE I
NAME	DATE	
		SCALE: VERT. 1:500 DATE 2/8/2008 DRAWN BY CHECKED BY