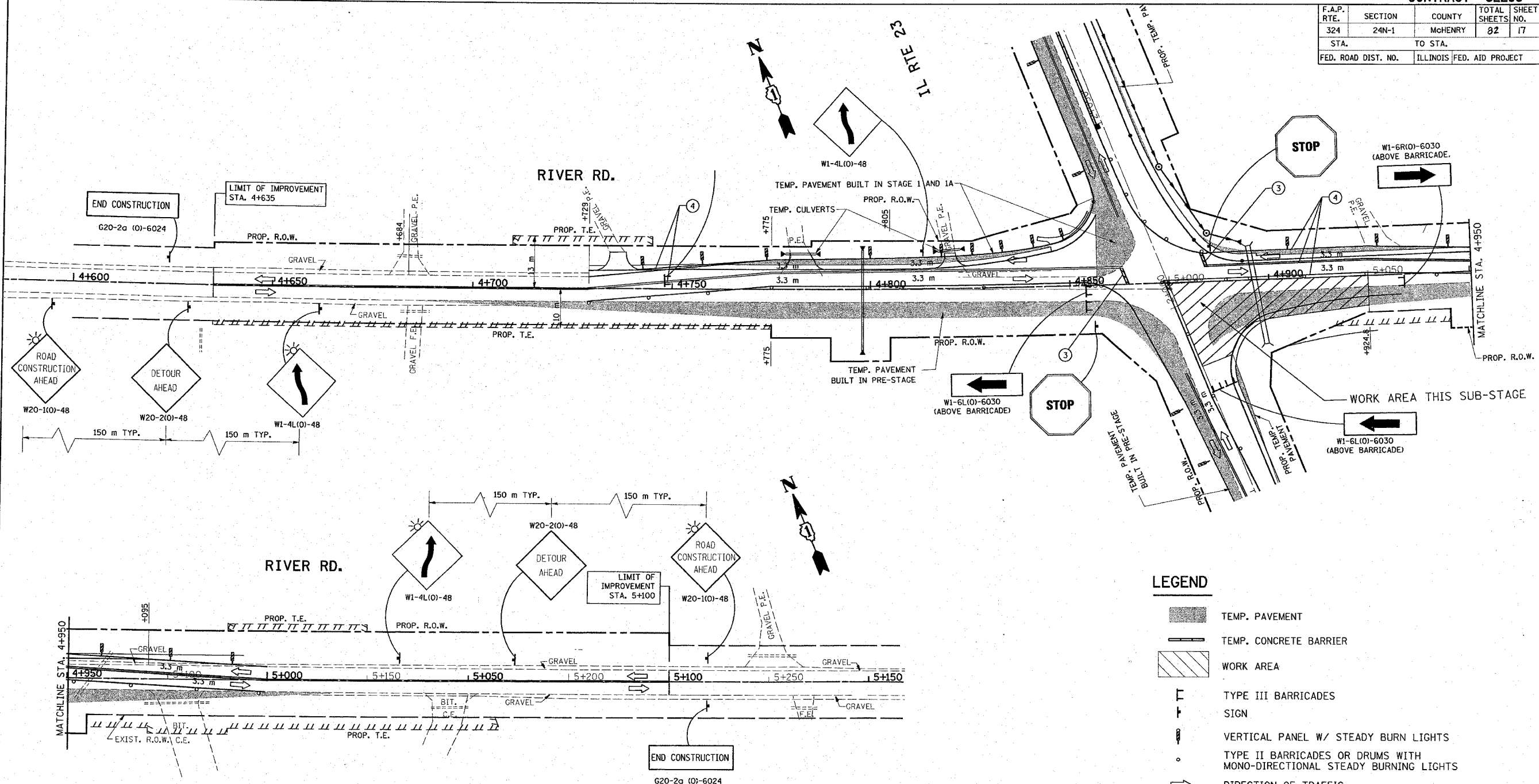


*REF-pmk4
*REF-pmk5

CONTRACT# 62296

F.A.P. RTE.	SECTION	COUNTY	TOTAL SHEETS	SHEET NO.
324	24N-1	McHENRY	02	17
STA.		TO STA.		
FED. ROAD DIST. NO.		ILLINOIS FED. AID PROJECT		



LEGEND

- TEMP. PAVEMENT
- TEMP. CONCRETE BARRIER
- WORK AREA
- TYPE III BARRICADES
- SIGN
- VERTICAL PANEL W/ STEADY BURN LIGHTS
- TYPE II BARRICADES OR DRUMS WITH MONO-DIRECTIONAL STEADY BURNING LIGHTS
- DIRECTION OF TRAFFIC
- TEMPORARY PAVEMENT MARKING, DOUBLE YELLOW CENTER LINE 100 mm @ 275 mm C-C
- TEMPORARY PAVEMENT MARKING, WHITE SOLID (100 mm) EDGE LINE
- TEMPORARY PAVEMENT MARKING, WHITE SOLID (600 mm) STOP BAR
- PAVEMENT MARKING TAPE, TYPE III, 100 mm

REVISIONS		ILLINOIS DEPARTMENT OF TRANSPORTATION
NAME	DATE	
		RIVER RD. @ IL. RTE. 23 SUGGESTED MAINTENANCE OF TRAFFIC PLANS STAGE 1B
SCALE: VERT. 1:500 HORIZ. DATE 2/8/2008		DRAWN BY CHECKED BY