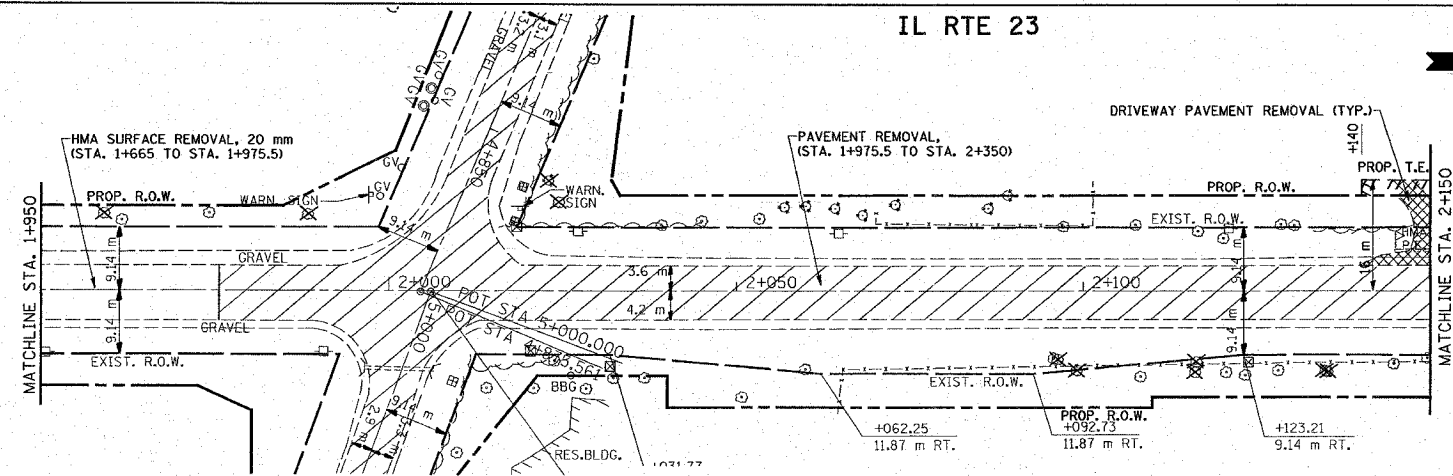


REF-10002
 REF-10002
 REF-10002
 REF-10112

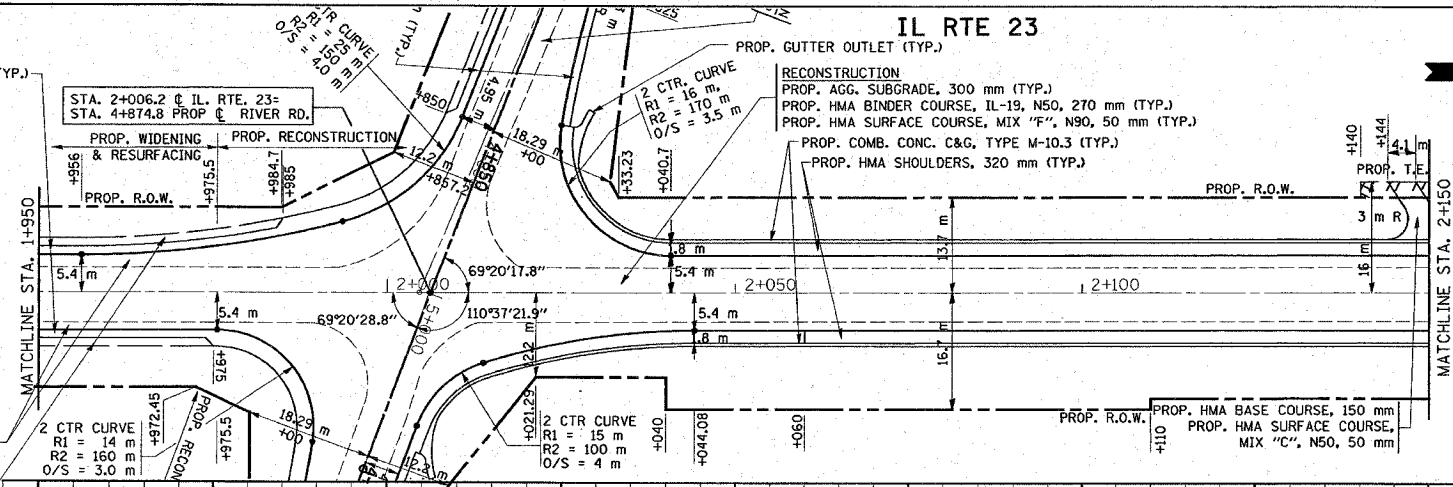
IL RTE 23



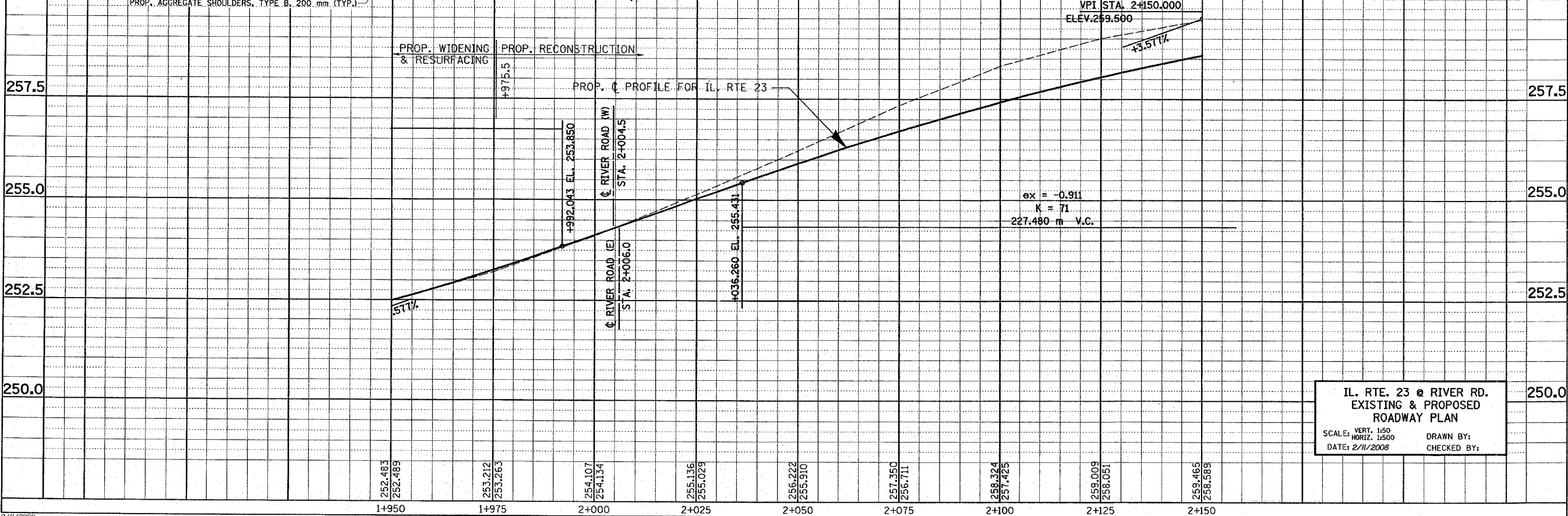
F.A.P. RTE.	SECTION	COUNTY	TOTAL SHEETS	SHEET NO.
324	24N-1	McHENRY	82	24
STA.		TO STA.		
FED. ROAD DIST. NO.		ILLINOIS FED. AID PROJECT		
CONTRACT NO. 62296				



EXISTING



PROPOSED



IL. RTE. 23 @ RIVER RD.
 EXISTING & PROPOSED
 ROADWAY PLAN
 SCALE: VERT. 1:50
 HORIZ. 1:500
 DATE: 2/11/2008
 DRAWN BY:
 CHECKED BY: