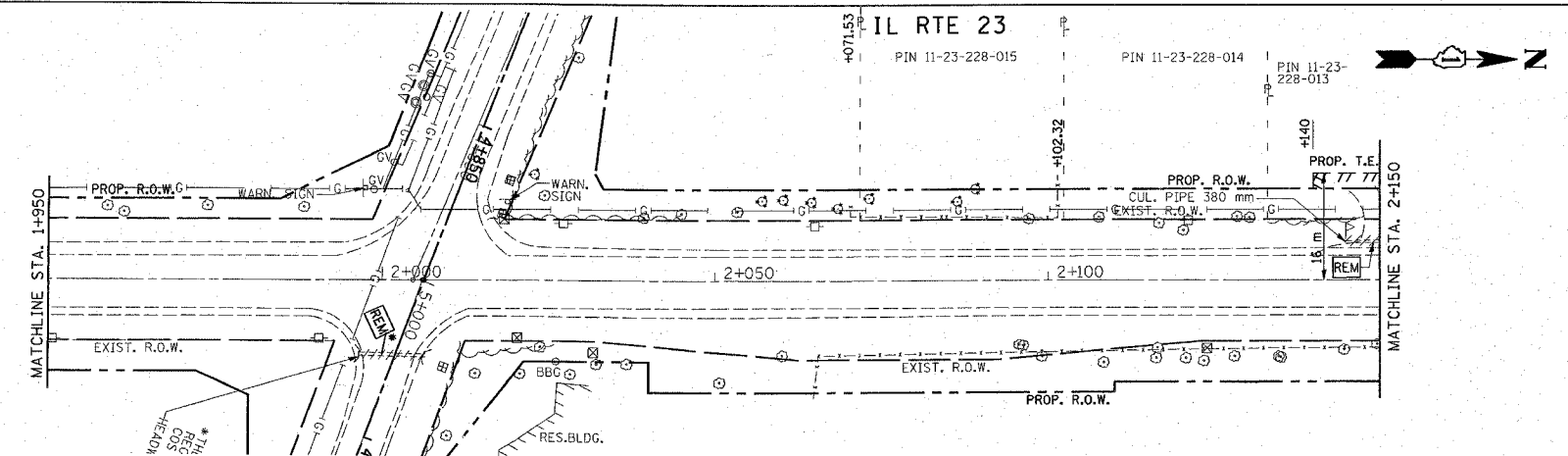
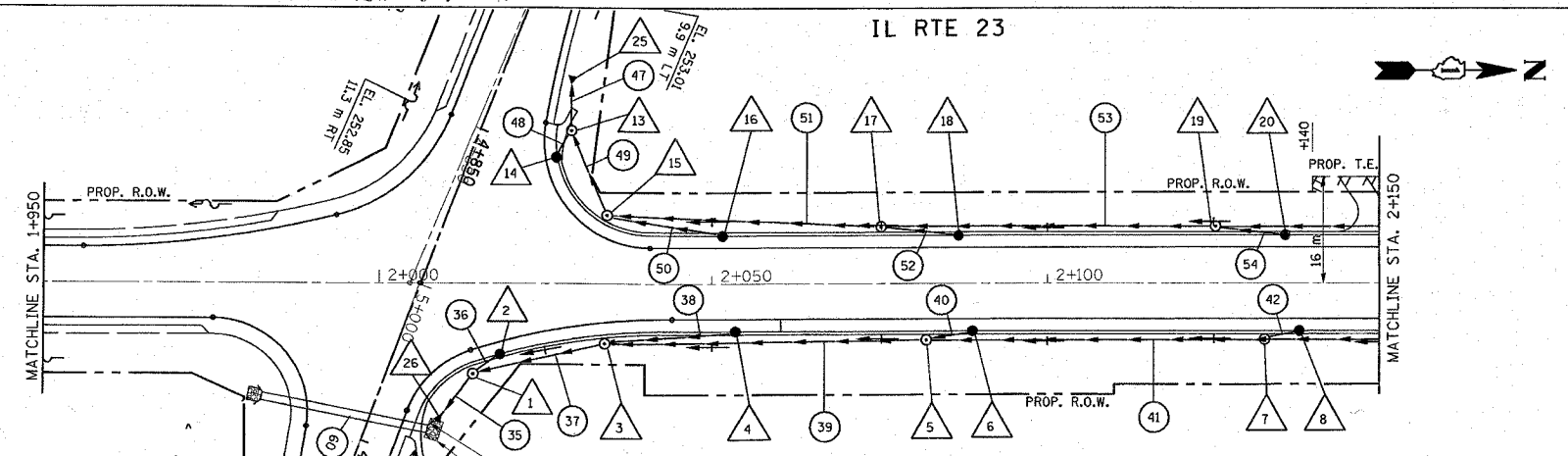


REF: ed2
REF: d12
REF: d12
REF: d12

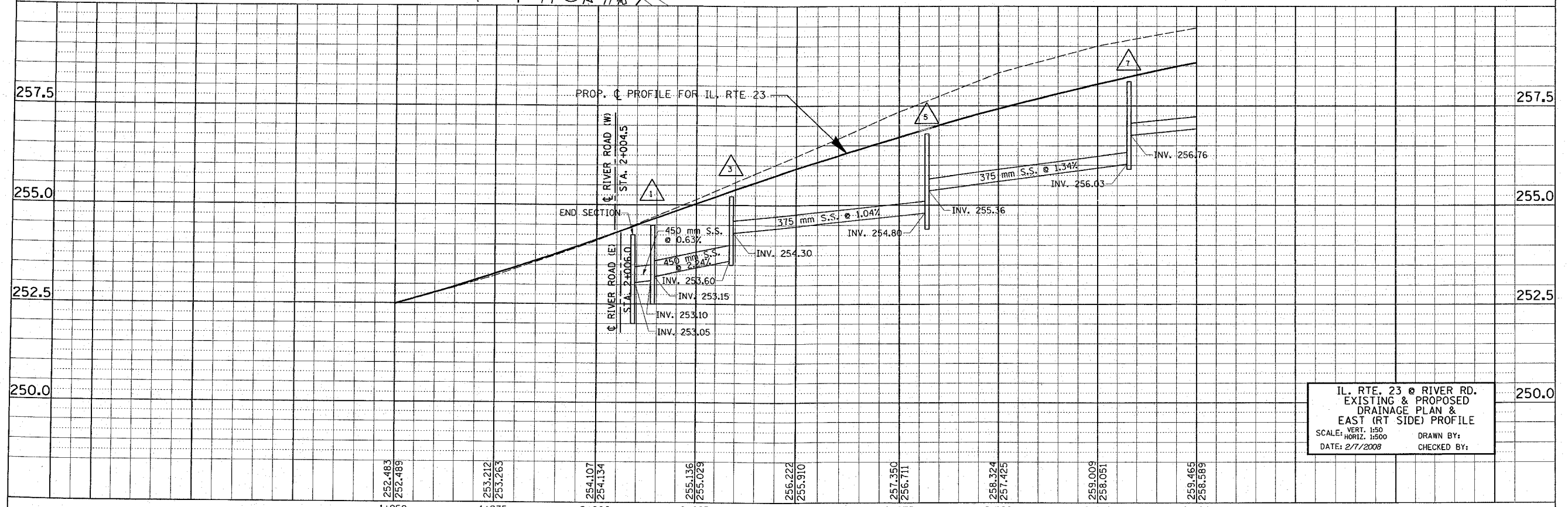
F.A.P. RTE.	SECTION	COUNTY	TOTAL SHEETS	SHEET NO.
324	24N-1	McHENRY	82	31
STA. 1+950		TO STA. 2+150		
FED. ROAD DIST. NO.		ILLINOIS FED. AID PROJECT		
CONTRACT NO. 62296				



EXISTING



PROPOSED



IL RTE. 23 @ RIVER RD.
EXISTING & PROPOSED
DRAINAGE PLAN &
EAST (RT SIDE) PROFILE
SCALE: VERT. 1:50
HORIZ. 1:500
DATE: 2/7/2008
DRAWN BY:
CHECKED BY: