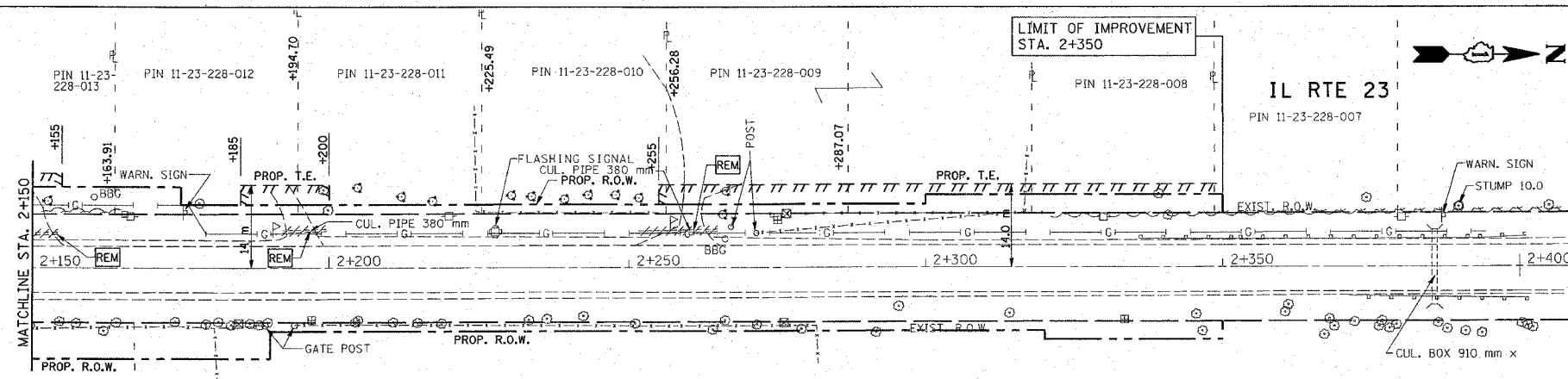
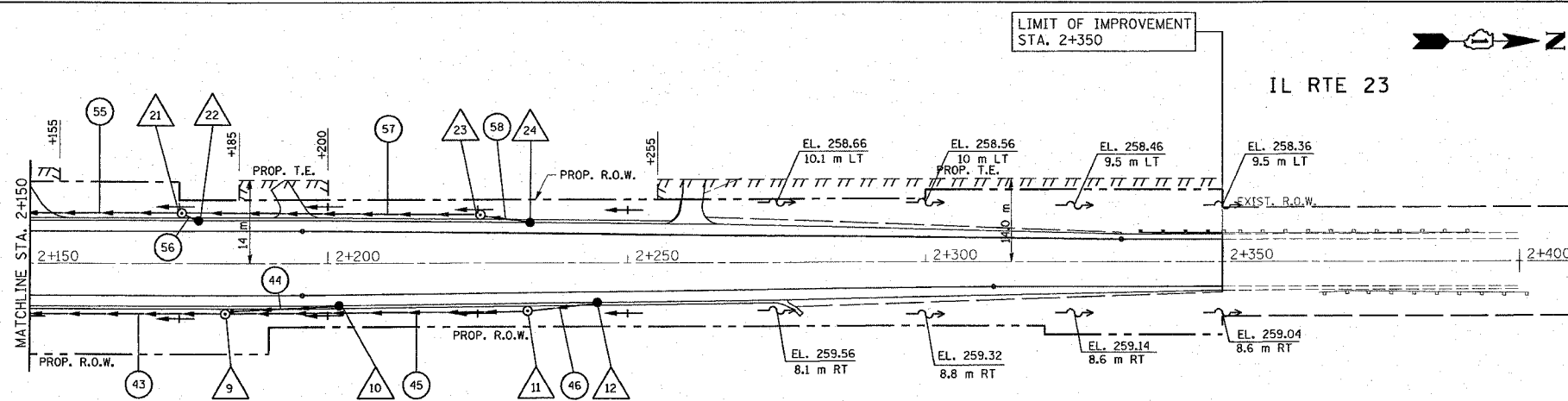


REF: edr3  
REF: pdr3  
REF: dpr3  
REF: dtd3

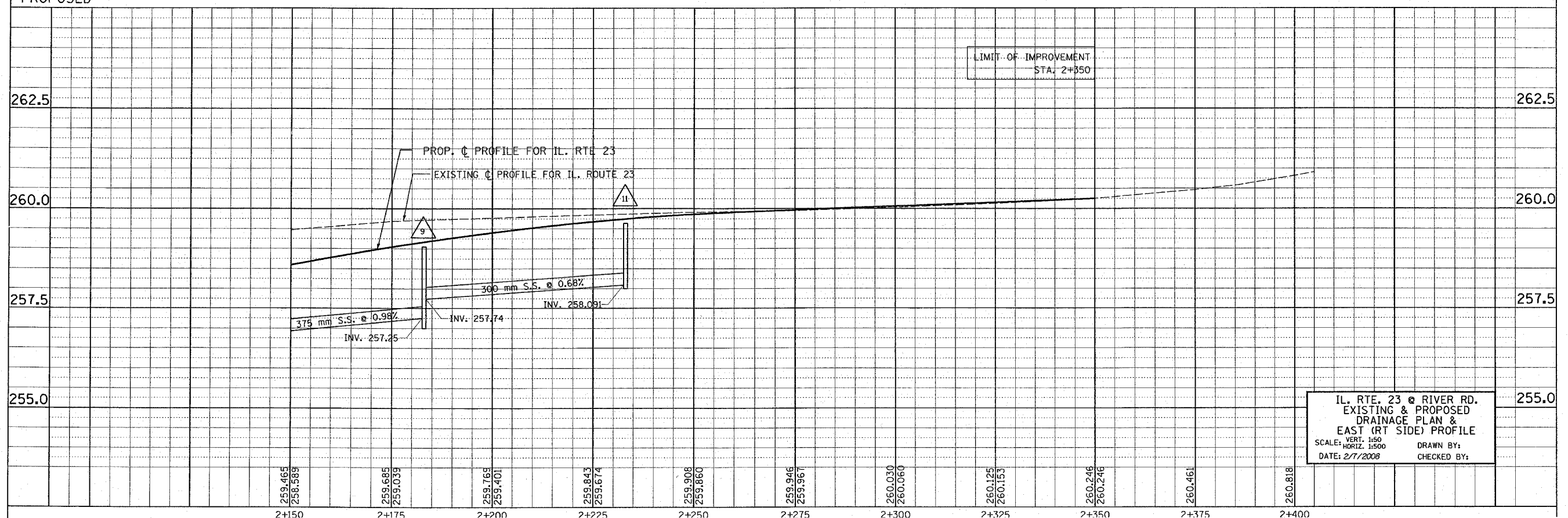
F.A.P. RTE.	SECTION	COUNTY	TOTAL SHEETS	SHEET NO.
324	24N-1	McHENRY	82	32
STA. 324		TO STA. 325		
FED. ROAD DIST. NO.		ILLINOIS FED. AID PROJECT		
CONTRACT NO. 62296				



EXISTING



PROPOSED



IL. RTE. 23 @ RIVER RD.  
EXISTING & PROPOSED  
DRAINAGE PLAN &  
EAST (RT SIDE) PROFILE  
SCALE: VERT. 1:50  
HORIZ. 1:500  
DATE: 2/7/2008  
DRAWN BY:  
CHECKED BY: