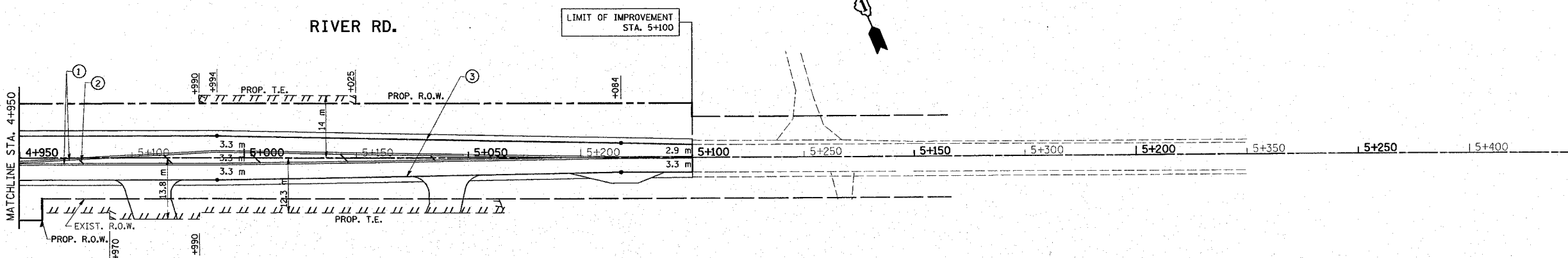
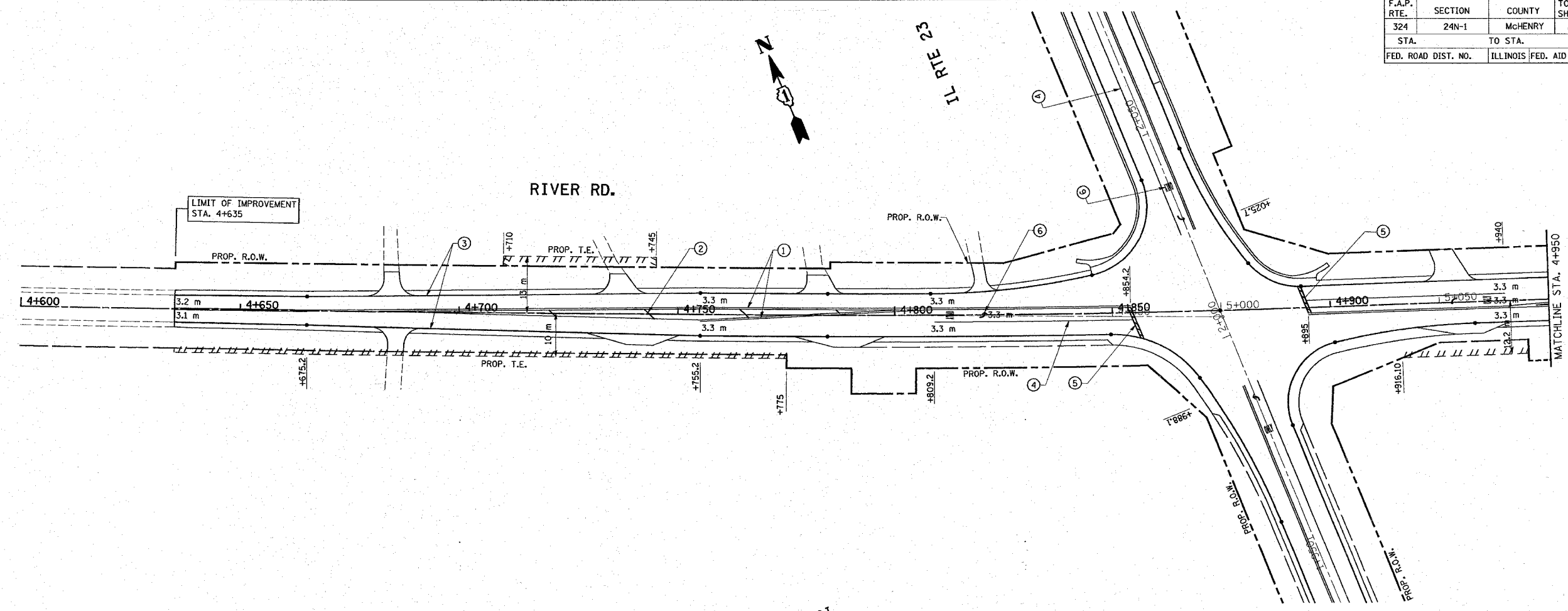


\*REF-pmk4  
\*REF-pmk5

F.A.P. RTE.	SECTION	COUNTY	TOTAL SHEETS	SHEET NO.
324	24N-1	McHENRY	82	39
STA.		TO STA.		
FED. ROAD DIST. NO.		ILLINOIS FED. AID PROJECT		



- LEGEND**
- ① PROP. THERMOPLASTIC PAVEMENT MARKING LINE 100 mm, DOUBLE YELLOW LINE
  - ② PROP. THERMOPLASTIC PAVEMENT MARKING LINE 300 mm, YELLOW DIAGONAL @ 45°, 6 m (20') C-C
  - ③ PROP. THERMOPLASTIC PAVEMENT MARKING LINE 100 mm, WHITE SOLID EDGE LINE
  - ④ PROP. THERMOPLASTIC PAVEMENT MARKING LINE 150 mm, WHITE SOLID TURN LANE LINE
  - ⑤ PROP. THERMOPLASTIC PAVEMENT MARKING LINE 600 mm, WHITE STOP BAR
  - ⑥ PROP. THERMOPLASTIC PAVEMENT MARKING LETTERS & SYMBOLS, WHITE

REVISIONS	
NAME	DATE

ILLINOIS DEPARTMENT OF TRANSPORTATION  
**IL. RTE. 23**  
**PROPOSED**  
**PAVEMENT MARKING PLAN**

SCALE: VERT. 1:500  
 HORIZ. 1:500  
 DATE 2/11/2008

DRAWN BY  
 CHECKED BY