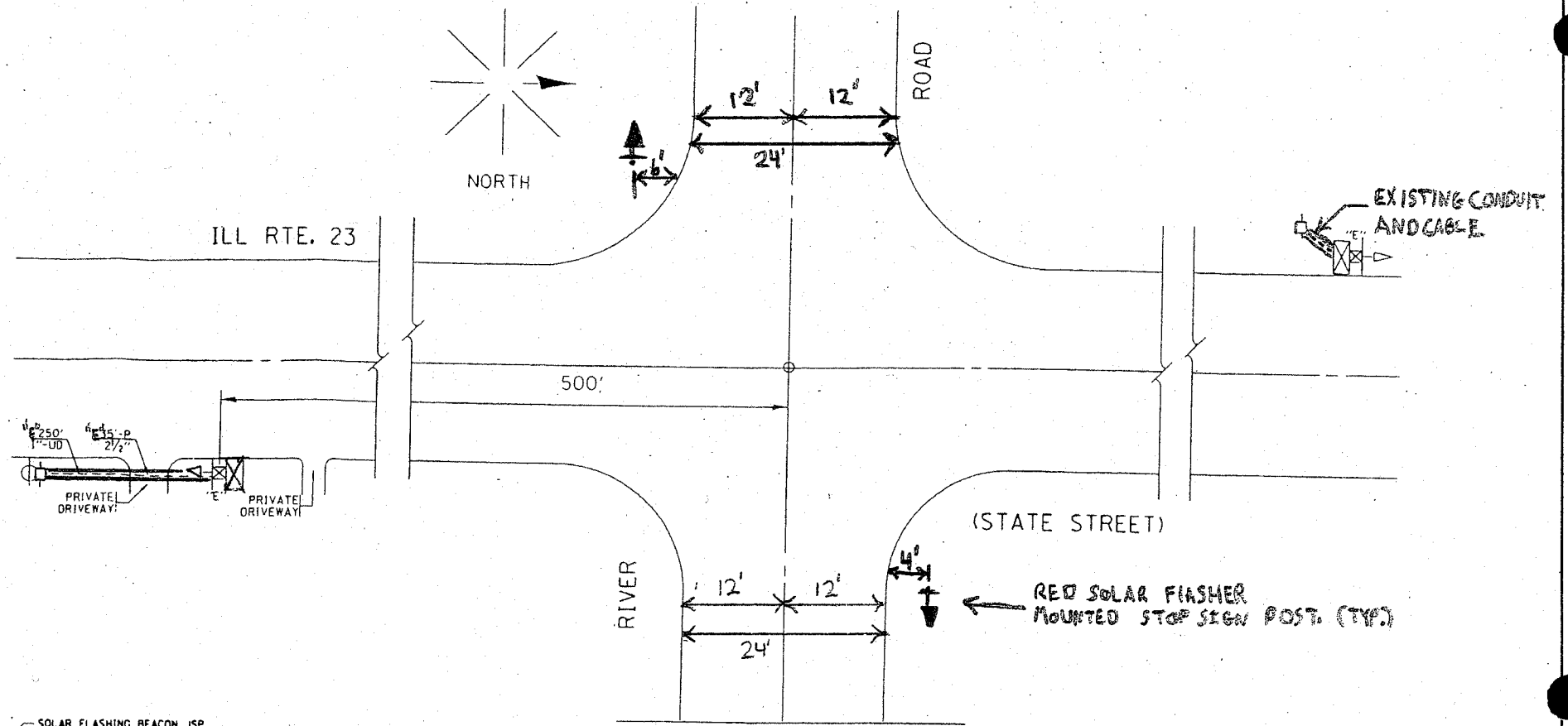


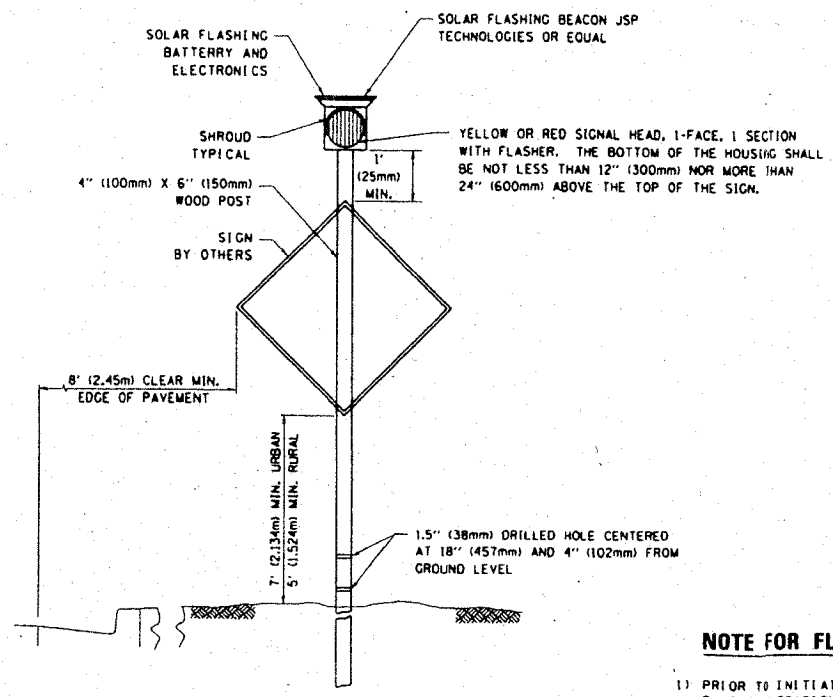
FLASHER SIGNAL LEGEND

	PROPOSED	EXISTING
SERVICE INSTALLATION	■	□
12" SIGNAL HEAD (LED)	▶	▷
WOOD POST, 4" x 6"	⊠	⊠ "E"
CONDUIT IN GROUND OR UNIT DUCT IN TRENCH	---	===
HANDHOLE	■	□
HEAVY-DUTY HANDHOLE	H	H "E"
ELECTRICAL POLE	●	○
GROUND ROD	⊕	⊕
SIGNAL FACE WITH BACKPLATE	R	R
JUNCTION BOX - STAINLESS STEEL	⊙	⊙
TRANSFORMER	T	T "E"

F.A.D. RTE.	SECTION	COUNTY	TOTAL SHEETS	SHEET NO.
324	24 N-1	McHENRY	82	46
STA.	TO STA.			
FED. ROAD DIST. NO.	ILLINOIS	FED. AID PROJECT		



EMC SUMMARY OF QUANTITIES			
ITEM	DESCRIPTION	UNIT	QUANTITY
TF03	SOLAR POWERED FLASHER, POST MOUNTED, 1 FACE (RED L.E.D. DISPLAY)	EACH	2
SPW1	POST, WOOD	EACH	2

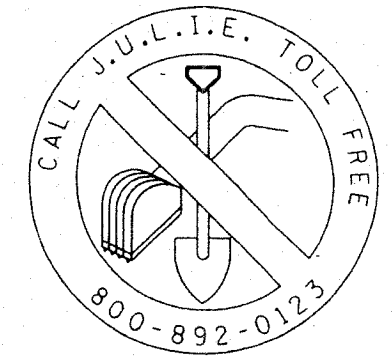


PROPOSED SOLAR FLASHER (24-HR)
N. T. S

NOTE FOR FLASHER(S):
1) PRIOR TO INITIATING OPERATION OF ANY FLASHER LOCATION, IT SHALL BE THE RESPONSIBILITY OF THE "ELECTRICAL MAINTENANCE CONTRACTOR" TO CONTACT, 48 HRS IN ADVANCE, THE "AREA TRAFFIC SIGNAL MAINTENANCE AND OPERATION ENGINEER" AT (847) 705-4139, ILLINOIS DEPARTMENT OF TRANSPORTATION.

PLAN - TRAFFIC SIGNAL FLASHER

EMC



Illinois Department of Transportation
Division of Highways / District 1
201 West Center Court
Schaumburg, Illinois 60196-1096

ENERGY SUPPLY: SOLAR POWER

REVISIONS	
NAME	DATE

ILLINOIS DEPARTMENT OF TRANSPORTATION
FLASHER INSTALLATION
IL. RTE. 23 @ RIVER ROAD

SCALE: NONE
DATE: JUNE 2007
DRAWN BY: [blank]
DESIGNED BY: [blank]
CHECKED BY: [blank]