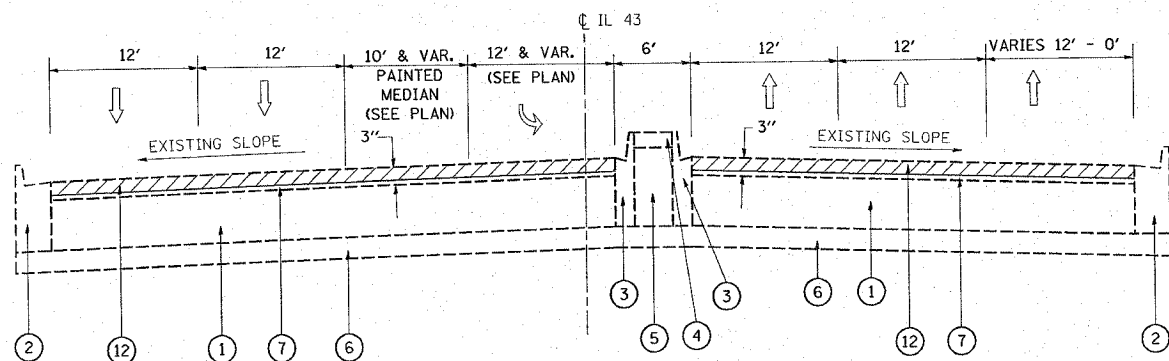
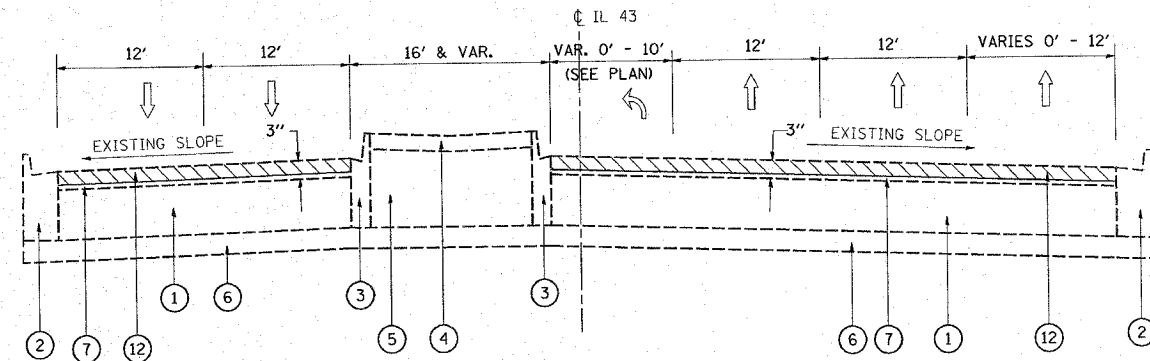


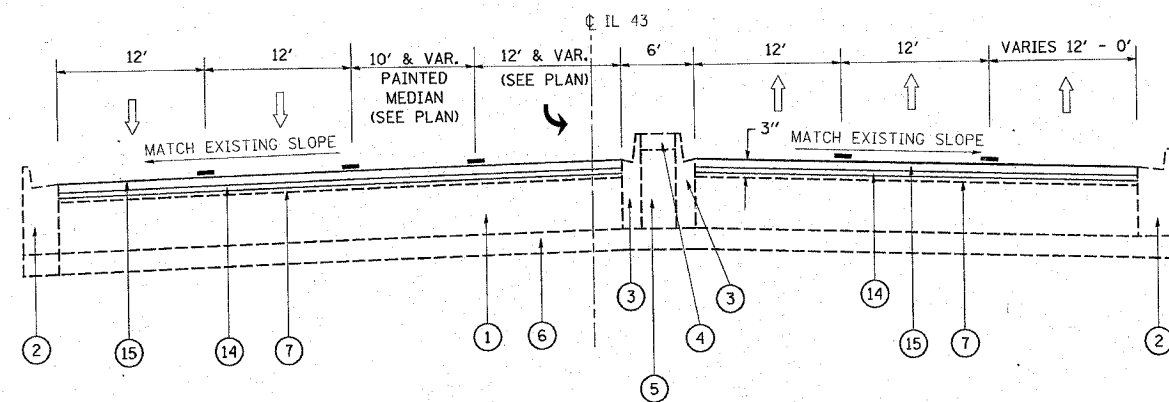
CONTRACT NO. 62343				
F.A.P. RTE.	SECTION	COUNTY	TOTAL SHEETS	SHEET NO.
348	*	COOK	86	8
STA.		TO STA.		
FED. ROAD DIST. NO.		ILLINOIS FED. AID PROJECT		
(1214 & 3127-1) RS-1				



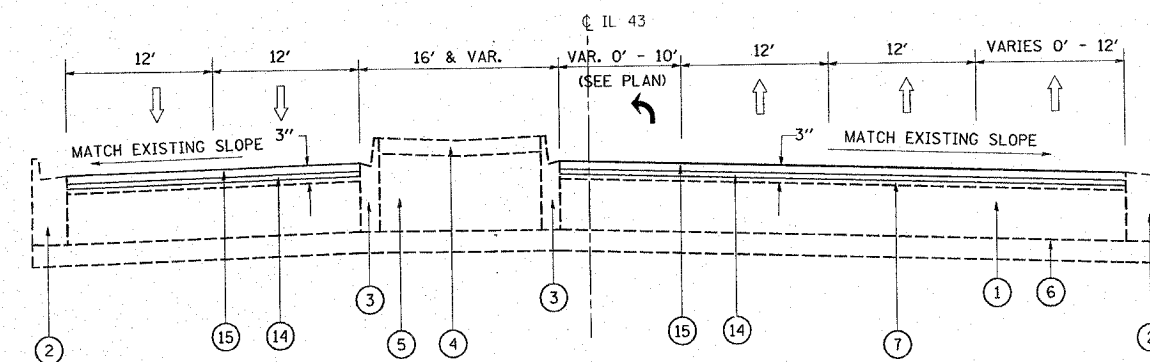
EXISTING TYPICAL SECTION
STA. 377+42 TO STA. 380+23



EXISTING TYPICAL SECTION
STA. 380+23 TO STA. 385+63



PROPOSED TYPICAL SECTION
STA. 377+42 TO STA. 380+23



PROPOSED TYPICAL SECTION
STA. 380+23 TO STA. 385+63

LEGEND

- ① EXISTING CONCRETE PAVEMENT, 10"
- ② EXISTING COMBINATION CONCRETE CURB & GUTTER, TYPE B-6.24
- ③ EXISTING COMBINATION CONCRETE CURB & GUTTER, TYPE B-9.12
- ④ EXISTING CONCRETE MEDIAN SURFACE, 4"
- ⑤ EXISTING SAND FILL
- ⑥ EXISTING STABILIZED SUB-BASE, 4"
- ⑦ EXISTING HMA SURFACE REMAINING AFTER MILLING, 1/2 "
- ⑧ EXISTING P.C. CONCRETE MEDIAN, TYPE M-2.12
- ⑨ EXISTING STABILIZED MEDIAN SURFACE, 12"
- ⑨A EXISTING CONCRETE MEDIAN
- ⑩ PROPOSED P.C.C. HMA SURFACE REMOVAL, 2"± (MEDIAN SURFACE OF M-2.12)
- ⑪ PROPOSED P.C.C. SURFACE REMOVAL (VARIABLE DEPTH) 0" - 1 1/2 "
- ⑪A PROPOSED MEDIAN REMOVAL (PARTIAL DEPTH)
- ⑫ PROPOSED HMA SURFACE REMOVAL, 2 1/2"
- ⑬ PROPOSED CURB CUT, 2"±
- ⑭ PROPOSED POLYMERIZED LEVELING BINDER, (MACHINE METHOD), IL-4.75, N50, 3/4"
- ⑮ PROPOSED POLYMERIZED HMA SURFACE COURSE, MIX. F, N90, 1 3/4"
- ⑯ PROPOSED POLYMERIZED HMA SURFACE COURSE, MIX. F, N90, (VARIABLE DEPTH) 2 1/2 " - 1 3/4"

NOTE:
THE EXACT LOCATION OF
CURB AND GUTTER AND
MEDIAN REPAIRS WILL BE
DETERMINED BY THE R.E. IN THE FIELD

REVISIONS	
NAME	DATE

ILLINOIS DEPARTMENT OF TRANSPORTATION

IL. RT. 43 (HARLEM AVE.)
EXISTING & PROPOSED
TYPICAL SECTIONS

SCALE: VERT. NONE
HORIZ. DATE 12/5/2007

DRAWN BY
CHECKED BY

PLOT DATE = 12/05/2007
FILE NAME = c:\pvc\jesta\dl19281\ah_rday.dgn
PLOT SCALE = 50.0000 / IN.
USER NAME = drvakosgn