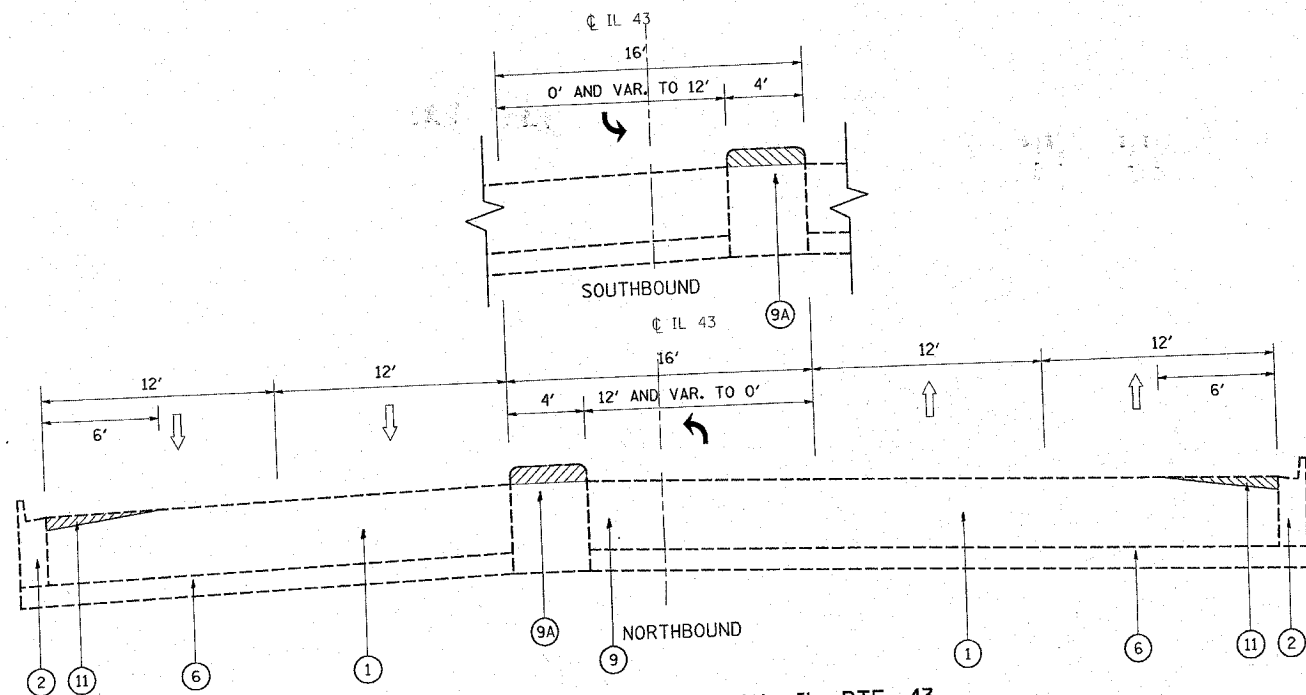
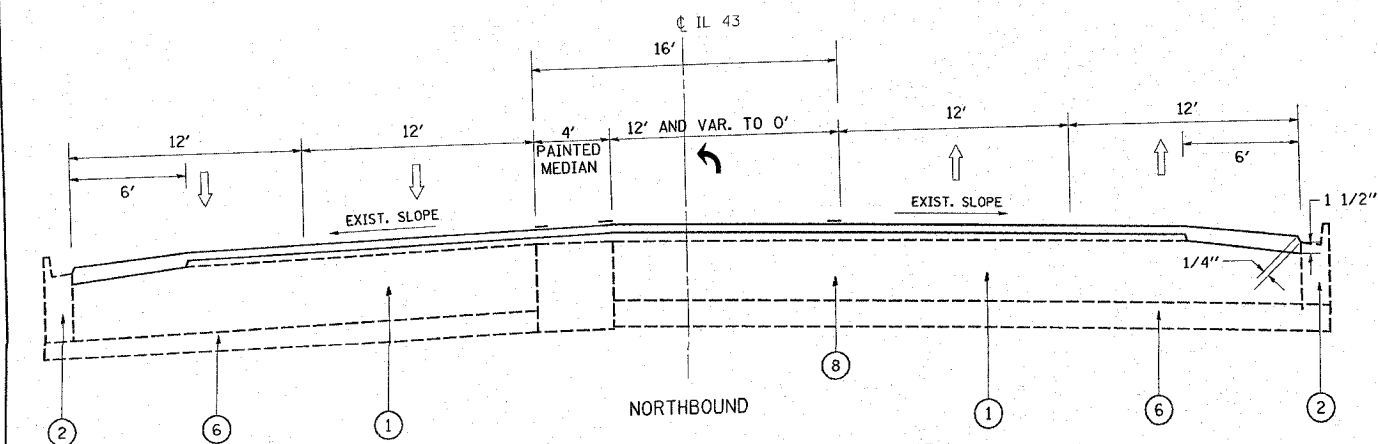
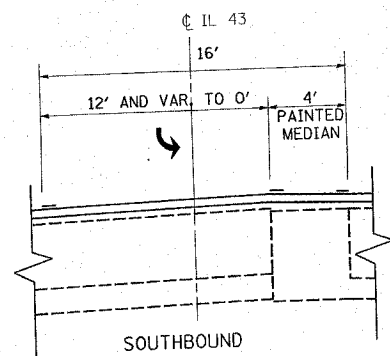


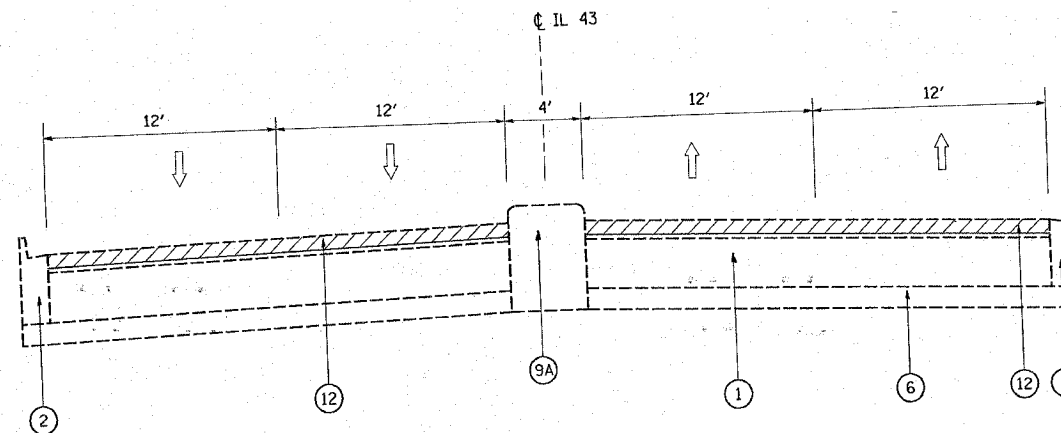
F.A.P. RTE.	SECTION	COUNTY	TOTAL SHEETS	SHEET NO.
348	*	COOK	86	13
STA. TO STA.		FED. ROAD DIST. NO. ILLINOIS FED. AID PROJECT		
		* (1214&3127-1RS-1)		



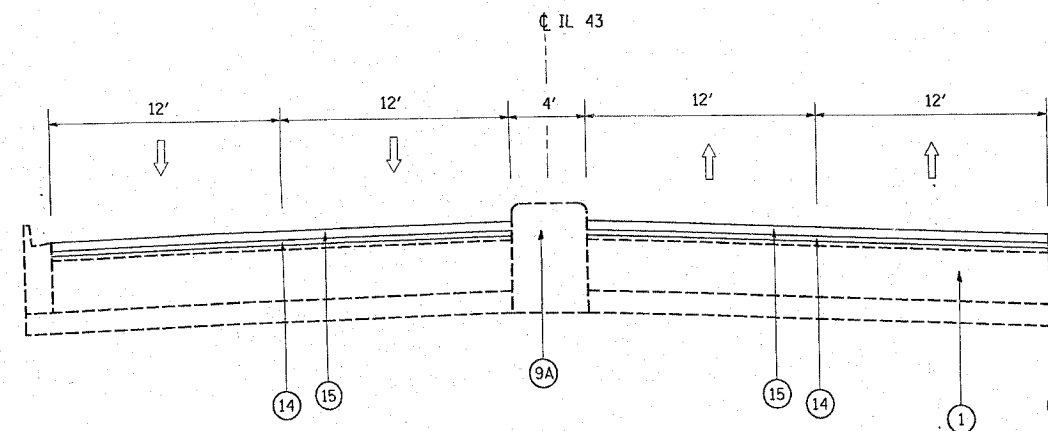
EXISTING TYPICAL SECTION IL. RTE. 43
STA. 205+50 TO STA. 220+00 (112TH ST. TO 110TH ST.)
STA. 239+50 TO STA. 242+92.6



PROPOSED TYPICAL SECTION IL. RTE. 43
STA. 205+50 TO STA. 220+00 (112TH ST. TO 110TH ST.)
STA. 239+50 TO STA. 242+92.6



EXISTING TYPICAL SECTION IL. RTE. 43
STA. 159+50 TO STA. 170+22 (LESS BRIDGE OMISSION)



PROPOSED TYPICAL SECTION IL. RTE. 43
STA. 159+50 TO STA. 170+22 (LESS BRIDGE OMISSION)

LEGEND

- ① EXISTING CONCRETE PAVEMENT, 10"
- ② EXISTING COMBINATION CONCRETE CURB & GUTTER, TYPE B-6.24
- ③ EXISTING COMBINATION CONCRETE CURB & GUTTER, TYPE B-9.12
- ④ EXISTING CONCRETE MEDIAN SURFACE, 4"
- ⑤ EXISTING SAND FILL
- ⑥ EXISTING STABILIZED SUB-BASE, 4"
- ⑦ EXISTING HMA SURFACE REMAINING AFTER MILLING, 1/2 "
- ⑧ EXISTING P.C. CONCRETE MEDIAN, TYPE M-2.12
- ⑨ EXISTING STABILIZED MEDIAN SURFACE, 12"

LEGEND

- ⑨A EXISTING CONCRETE MEDIAN
- ⑩ PROPOSED P.C.C. HMA SURFACE REMOVAL, 2"± (MEDIAN SURFACE OF M-2.12)
- ⑪ PROPOSED P.C.C. SURFACE REMOVAL (VARIABLE DEPTH) 0" - 1 1/2 "
- ⑪A PROPOSED MEDIAN REMOVAL (PARTIAL DEPTH)
- ⑫ PROPOSED HMA SURFACE REMOVAL, 2 1/2"
- ⑬ PROPOSED CURB CUT, 2"±
- ⑭ PROPOSED POLYMERIZED LEVELING BINDER, (MACHINE METHOD), IL-4.75, N50, 3/4"
- ⑮ PROPOSED POLYMERIZED HMA SURFACE COURSE, MIX. F, N90, 1 3/4"
- ⑯ PROPOSED POLYMERIZED HMA SURFACE COURSE, MIX. F, N90, (VARIABLE DEPTH) 2 1/2 " - 1 3/4"

REVISIONS	
NAME	DATE

ILLINOIS DEPARTMENT OF TRANSPORTATION

IL. RT. 43 (HARLEM AVE.)
EXISTING & PROPOSED
TYPICAL SECTIONS

SCALE: VERT. NONE
HORIZ. DATE

DRAWN BY
CHECKED BY