

F.A.U. RTE.	SECTION	COUNTY	TOTAL SHEETS	SHEET NO.
2710	3222 RS-1	COOK	31	1
FED. ROAD DIST. NO.	ILLINOIS	CONTRACT NO.	62414	

STATE OF ILLINOIS
DEPARTMENT OF TRANSPORTATION
DIVISION OF HIGHWAYS

**PROPOSED
HIGHWAY PLANS**

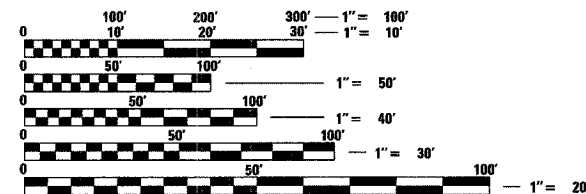
F.A.U. 2710 (DES PLAINES RIVER ROAD)
SECTION 3222 RS-1
FOSTER AVENUE TO 1ST AVENUE (IL 171)
RESURFACING (3P)
PROJECT: ACM-2710(009)
COOK COUNTY
C-91-116-02

FOR INDEX OF SHEETS, SEE SHEET NO. 2

THIS IMPROVEMENT IS LOCATED
WITHIN THE VILLAGES OF SCHILLER PARK,
FRANKLIN PARK AND RIVER GROVE

TRAFFIC DATA

2005 ADT - 27,400
POSTED SPEED LIMIT - 40 MPH



FULL SIZE PLANS HAVE BEEN PREPARED USING STANDARD
ENGINEERING SCALES. REDUCED SIZED PLANS WILL NOT
CONFORM TO STANDARD SCALES. IN MAKING MEASUREMENTS
ON REDUCED PLANS, THE ABOVE SCALES MAY BE USED.

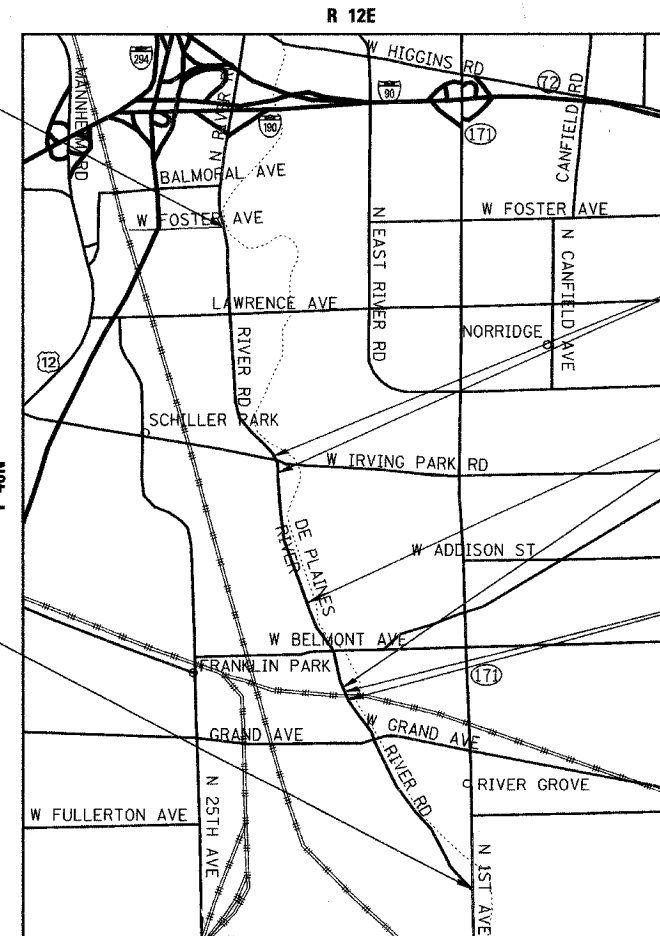
J.U.L.I.E.
JOINT UTILITY LOCATION INFORMATION FOR EXCAVATION
1-800-892-0123
OR 811

Ciorba Group, Inc.

DESIGN FIRM
REGISTRATION NUMBER

184-001016

CONSULTING ENGINEERS
SUITE 402, 5507 NORTH CUMBERLAND AVE
CHICAGO, ILLINOIS 60656 :: (773) 775-4009



END IMPROVEMENT
STA. 328 + 58.00

BEGIN IMPROVEMENT
STA. 105 + 60.00

STA. 254 + 21.70
OMISSION
STA. 248 + 58.60

STA. 198 + 26.00
OMISSION
STA. 178 + 20.00

STA. 174 + 24.28
OMISSION
STA. 173 + 32.57

LEYDEN TOWNSHIP
LOCATION MAP

1" = 2500'

GROSS LENGTH OF PROJECT = 22,298 FT = 4.223 MI.
NET LENGTH OF PROJECT = 19,637 FT = 3.719 MI.

D-91-202-01



LOCATION OF SECTION INDICATED THIS: -

STATE OF ILLINOIS
DEPARTMENT OF TRANSPORTATION
DIVISION OF HIGHWAYS

SUBMITTED April 1, 2008

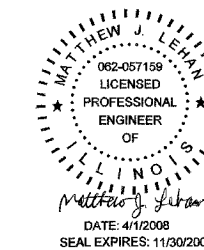
Diana M. O'Keefe
DEPUTY DIRECTOR OF HIGHWAYS, REGION ENGINEER

May 9, 2008

Eric E. Harnick
SENIOR ENGINEER OF DESIGN AND ENVIRONMENT

May 9, 2008

Christine M. Reed
DIRECTOR OF HIGHWAYS, CHIEF ENGINEER



PRINTED BY THE AUTHORITY
OF THE STATE OF ILLINOIS

CONTRACT NO. 62414

DISTRICT 1 DESIGN PLAN PREPARATION ENGINEER: K. ENG (847)705-4247