

F.A.P. RTE.	SECTION	COUNTY	TOTAL SHEETS	SHEET NO.
338	114R-1	WILL	355	14
STA.		TO STA.		
FED. ROAD DIST. NO. 1		ILLINOIS FED. AID PROJECT		

**EXISTING LEGEND**

- [A] PORTLAND CEMENT CONCRETE PAVEMENT 9"
- [B] HOT-MIX ASPHALT BINDER AND SURFACE COURSES 5"
- [C] HOT-MIX ASPHALT BINDER AND SURFACE COURSES (VARIES 2" - 5")
- [D] HOT-MIX ASPHALT BINDER AND SURFACE COURSES 4"
- [E] HOT-MIX ASPHALT SURFACE AND BINDER COURSES (VARIES)
- [F] BITUMINOUS OR PORTLAND CEMENT CONCRETE BASE COURSE (VARIES 8" - 12")
- [G] BITUMINOUS BASE COURSE 8"
- [H] SUB-BASE GRANULAR MATERIAL (VARIES 0" - 4")
- [I] BITUMINOUS SHOULDER (VARIES 6 1/2" - 8")
- [J] AGGREGATE SHOULDER (VARIES 6" - 8")
- [K] EXISTING TOPSOIL
- [L] PORTLAND CEMENT CONCRETE SIDEWALK (AT LOCATIONS NOTED IN PLANS)
- [M] COMBINATION CONCRETE CURB & GUTTER
- [N] REMOVAL AND DISPOSAL OF UNSUITABLE MATERIAL
- [O] EARTH EXCAVATION
- [P] PAVEMENT REMOVAL
- [Q] PAVED SHOULDER REMOVAL
- [R] SIDEWALK REMOVAL
- [S] COMBINATION CONCRETE CURB & GUTTER REMOVAL
- [T] RETAINING WALL (TO REMAIN)

**PROPOSED LEGEND**

- [1] PORTLAND CEMENT CONCRETE PAVEMENT 9 3/4" (JOINTED)
- [2] AGGREGATE SUBGRADE 12"
- [3] COMBINATION CONCRETE CURB & GUTTER, TYPE B-6.12
- [4] COMBINATION CONCRETE CURB & GUTTER, TYPE B-6.24
- [5] CONCRETE MEDIAN, TYPE SB-6 (SPECIAL)/CONCRETE MEDIAN, TYPE SB-6.24 (SEE DETAIL SHEET NO.189)
- [6] NO. 6 x 24" TIE BARS (EPOXY COATED) GROUTED IN PLACE AT 24" O.C. INCLUDED IN COST OF COMBINATION CONCRETE CURB & GUTTER, STANDARD 606001.
- [7] LONGITUDINAL CONSTRUCTION JOINT GROUTED-IN-PLACE TIE BARS (EPOXY COATED) NO. 8 x 24" LONG DEFORMED TIE BARS AT 24" O.C. (STANDARD 420001) (INCLUDED IN THE COST OF CONCRETE PAVEMENT)
- [8] LONGITUDINAL SAWED JOINT - NO. 6 x 30" LONG DEFORMED TIE BARS (EPOXY COATED) AT 30" O.C. (STANDARD 420001) (INCLUDED IN THE COST OF CONCRETE PAVEMENT)
- [9] SODDING, SALT TOLERANT OR SEEDING (AS NOTED ON LANDSCAPING PLANS)
- [10] TOPSOIL FURNISH AND PLACE, 4"
- [11] TOPSOIL FURNISH AND PLACE, 8"
- [12] TOPSOIL FURNISH AND PLACE, 12"
- [13] PORTLAND CEMENT CONCRETE SIDEWALK, 5"
- [14] PIPE UNDERDRAINS, FABRIC LINED TRENCH 4"

(BOXED ITEMS ARE INCLUDED IN THE COST OF ANOTHER PAY ITEM)

**NOTES**

- [1] DEPRESS CURB AND GUTTER ACCORDINGLY BASED ON STANDARD BD-34
- [2] ADJACENT TO THE EAST HEADWALL OF THE HAMMEL CREEK CULVERT, THIS DIMENSION WILL BE REDUCED TO 1'.
- [3] ADJACENT TO THE WEST HEADWALL OF THE HAMMEL CREEK CULVERT, THIS DIMENSION WILL BE REDUCED TO 1'-10".
- [4] ADJACENT TO THE WEST HEADWALL OF THE HAMMEL CREEK CULVERT, THESE CROSS SLOPES WILL BE REVISED TO DRAIN AT 2% AWAY FROM IL ROUTE 59.
- [5] 15' @ THE COUNTRY GLEN COURT INTERSECTION

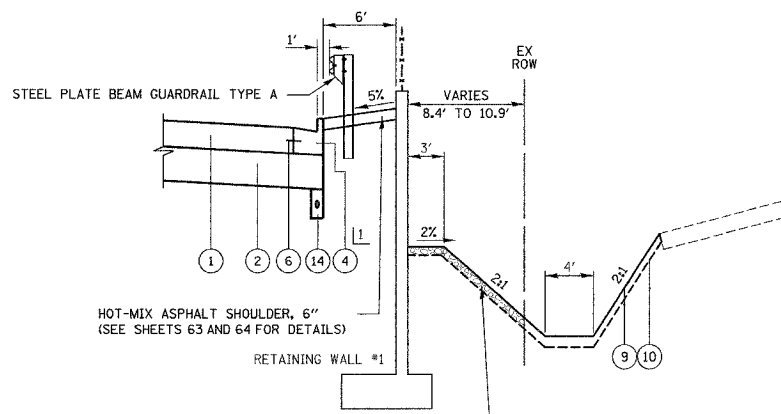
**HOT-MIX ASPHALT MIXTURE REQUIREMENTS**

THE FOLLOWING MIXTURE REQUIREMENTS ARE APPLICABLE FOR THIS PROJECT.

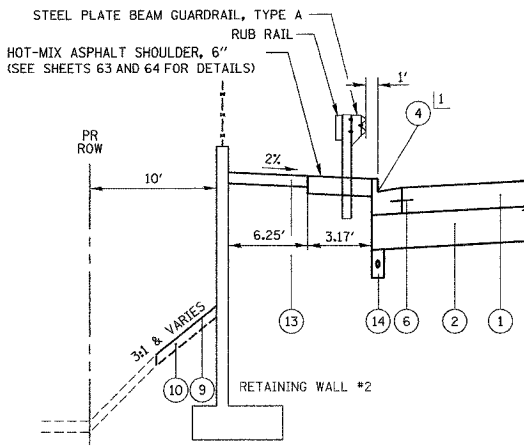
(NOTE: THE UNIT WEIGHT TO CALCULATE ALL HOT-MIX ASPHALT SURFACE MIXTURE QUANTITIES IS 112 LBS/SQ YD/IN)

LOCATION(S)	MIXTURE TYPE	AC TYPE	AIR VOIDS (%)	MAX RAP (%)
RESIDENTIAL BITUMINOUS DRIVEWAY	HOT-MIX ASPHALT BASE COURSE, 6" (BINDER IL-19mm)	PG 64-22/58-22*	4% @ 50 GYR	25%
COMMERCIAL BITUMINOUS DRIVEWAY	HOT-MIX ASPHALT BASE COURSE, 8" (BINDER IL-19mm)	PG 64-22/58-22*	4% @ 50 GYR	25%
ALL BITUMINOUS DRIVEWAY	HOT-MIX ASPHALT SURFACE COURSE, MIX "C", N50 (IL-9.5mm)	PG 64-22	4% @ 50 GYR	15%
UNDER GUARDRAIL TERMINAL	HOT-MIX ASPHALT SHOULDER, 6"	PG 64-22/58-22*	2% @ 30 GYR	50%
MISC. LEVELING BINDER	LEVELING BINDER (MACHINE METHOD), N50 (3/4" MIN)	PG 64-22/58-22*	4% @ 50 GYR	25%
MISC. SURFACE COURSE	HOT-MIX ASPHALT SURFACE COURSE, MIX "D", N50 (1 1/2" MIN)	PG 64-22	4% @ 50 GYR	15%
TEMPORARY PAVEMENT FOR M.O.T.	HOT-MIX ASPHALT BASE COURSE, 10" (BINDER IL-19mm)	PG 64-22/58-22*	4% @ 50 GYR	25%
	HOT-MIX ASPHALT SURFACE COURSE, MIX "D", N50, 2" (IL-9.5mm)	PG 64-22	4% @ 50 GYR	15%
PAVEMENT PATCHING	CLASS D PATCH (BINDER IL-19mm)	PG 64-22/58-22*	4% @ 70 GYR	25%

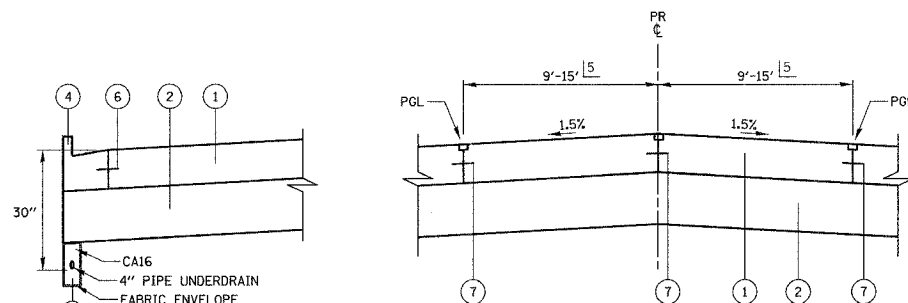
\* WHEN RAP EXCEEDS 20%, THE NEW ASPHALT BINDER IN THE MIX SHALL BE PG 58-22



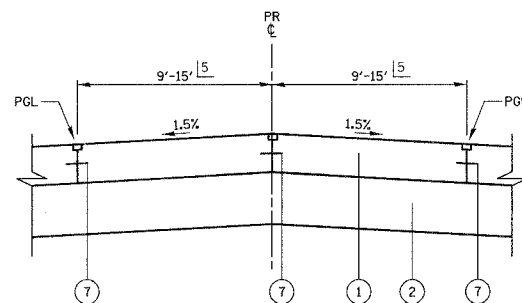
**RETAINING WALL 1 DETAIL**  
ILLINOIS ROUTE 59  
STA 3047+20.51 TO STA 3051+44.64



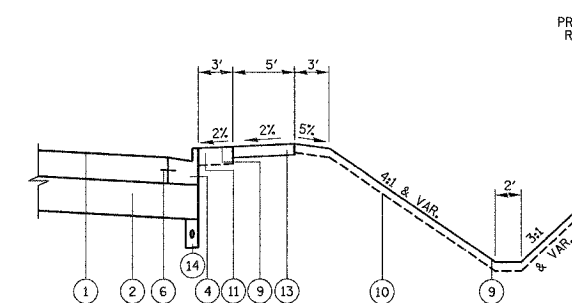
**RETAINING WALL 2 DETAIL**  
ILLINOIS ROUTE 59  
STA 3051+60.30 TO STA 3053+56.25



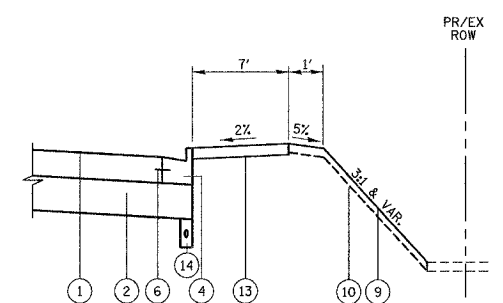
**4" PIPE UNDERDRAIN DETAIL (LONGITUDINAL)**



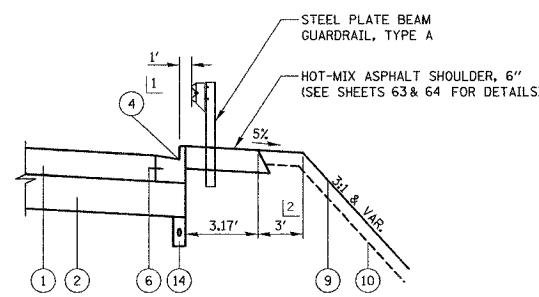
**MEDIAN BREAK (UNLESS OTHERWISE NOTED ON THE PLANS) TYPICAL SECTION**



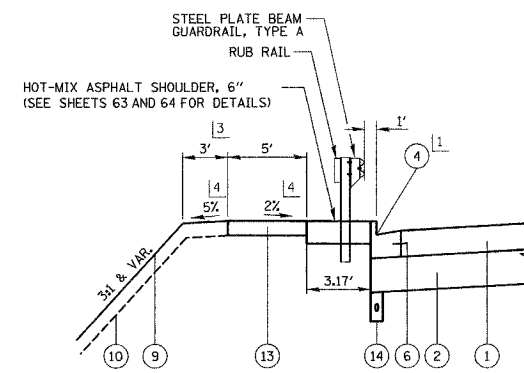
**ALTERNATE SIDEWALK/SIDE SLOPE SECTION #1**  
ILLINOIS ROUTE 59  
STA 3032+74 LT TO STA 3038+89 LT  
STA 3095+67 RT TO STA 3108+26 RT  
STA 3109+10 RT TO STA 3127+64 RT  
STA 3109+50 LT TO STA 3121+31 LT  
STA 3135+90 RT TO STA 3155+25 RT



**ALTERNATE SIDEWALK/SIDE SLOPE SECTION #2**  
ILLINOIS ROUTE 59  
STA 3156+02 RT TO STA 3172+00 RT



**GUARD RAIL DETAIL #1**  
ILLINOIS ROUTE 59  
STA 3038+77.5 RT TO STA 3047+20.5 RT



**GUARD RAIL DETAIL #2**  
ILLINOIS ROUTE 59  
STA 3040+56.9 LT TO STA 3044+06.9 LT

**ILLINOIS ROUTE 59 (PORTLAND CEMENT CONCRETE PAVEMENT)**  
STATION 3032+25.77 TO STATION 3193+25

STRUCTURAL DESIGN TRAFFIC:	Year 2020
PV = 20,415	SU = 1,624 MU = 1,160
ROAD/STREET CLASSIFICATION:	Class II
PERCENT OF STRUCTURAL DESIGN TRAFFIC IN DESIGN LANE:	
P = 32%	S = 45% M = 45%
TRAFFIC FACTOR:	Actual TF = 7.93
	Minimum TF = 4.96
EDGE SUPPORT CONDITION:	TIED CURB & GUTTER
SUBGRADE SUPPORT RATING:	
SSR = POOR	(STA 3032+25.77 To STA 3193+25)

REVISIONS	
NAME	DATE
REVISED IL59 ALIGN.	12/22/08

ILLINOIS DEPARTMENT OF TRANSPORTATION  
**TYPICAL SECTIONS**  
ILLINOIS ROUTE 59  
DATE 3/18/08  
DRAWN BY MJC  
CHECKED BY VJD  
SCALE: NONE