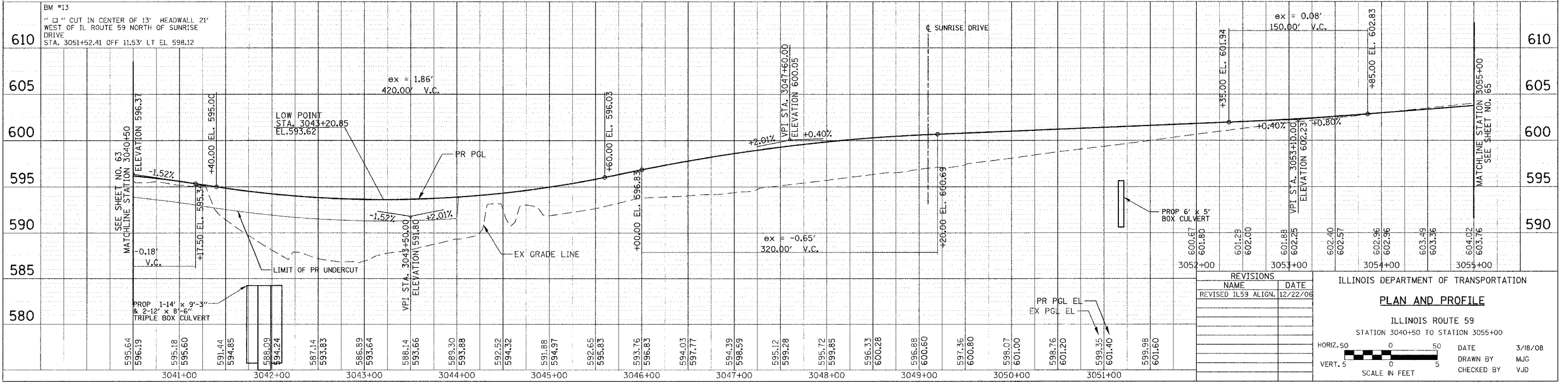
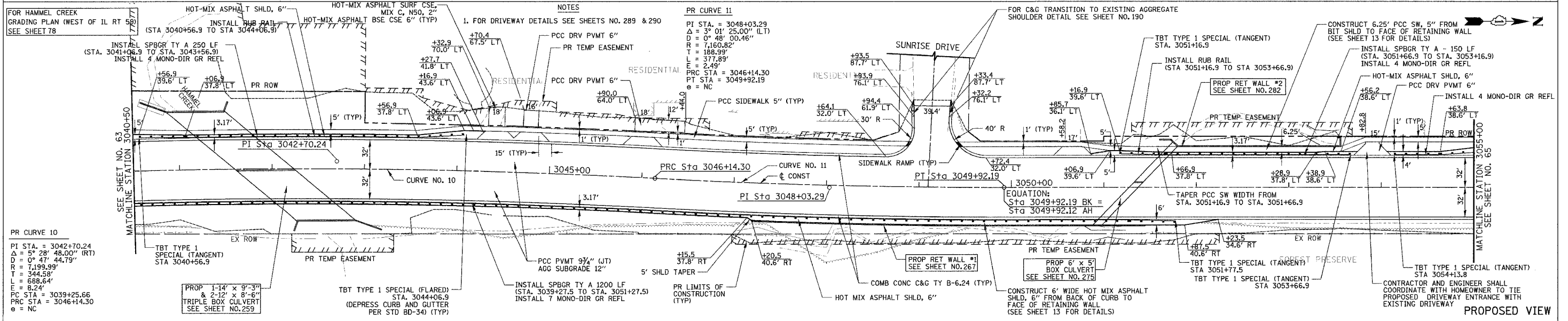
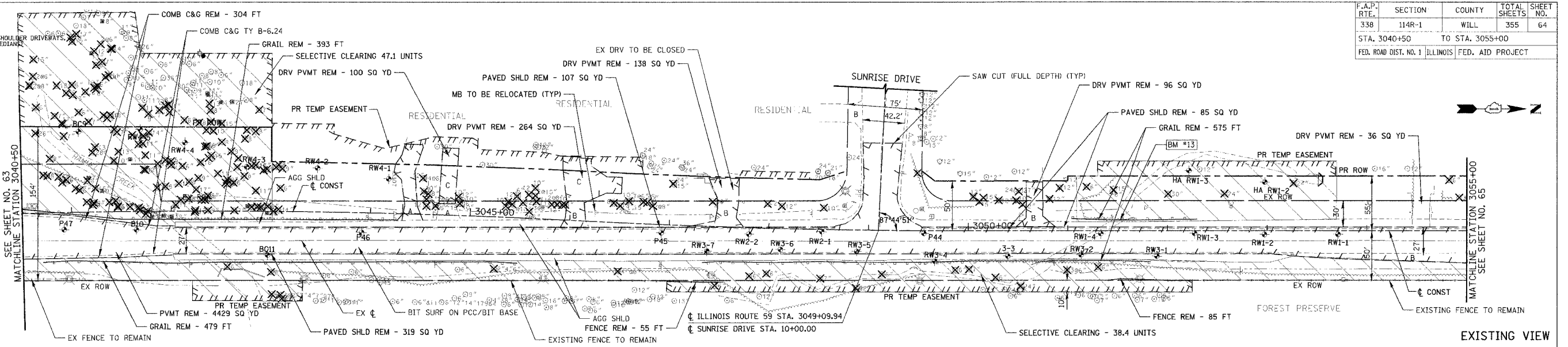


F.A.P. RTE.	SECTION	COUNTY	TOTAL SHEETS	SHEET NO.
338	114R-1	WILL.	355	64
STA. 3040+50		TO STA. 3055+00		
FED. ROAD DIST. NO. 1 ILLINOIS FED. AID PROJECT				

- EXISTING PLAN LEGEND:**
- REMOVAL LIMITS (PAVEMENT, SHOULDER, DRIVEWAYS, C&G, AND MEDIAN)
 - GUARD RAIL/FENCE REMOVAL
 - SIDEWALK REMOVAL
 - SELECTIVE CLEARING
 - TREE REMOVAL
 - SOIL BORING LOCATION
 - AGGREGATE DRIVEWAY
 - BITUMINOUS DRIVEWAY
 - CONCRETE DRIVEWAY



REVISIONS

NO.	NAME	DATE
1	REVISED IL59 ALIGN.	12/22/06

ILLINOIS DEPARTMENT OF TRANSPORTATION

PLAN AND PROFILE

ILLINOIS ROUTE 59
STATION 3040+50 TO STATION 3055+00

HORIZ. 50 0 50
VERT. 5 0 5

SCALE IN FEET

DATE 3/8/08
DRAWN BY MJG
CHECKED BY VJD

PLAN

NO.	DATE	BY	DATE
1			

PROFILE

NO.	DATE	BY	DATE
1			