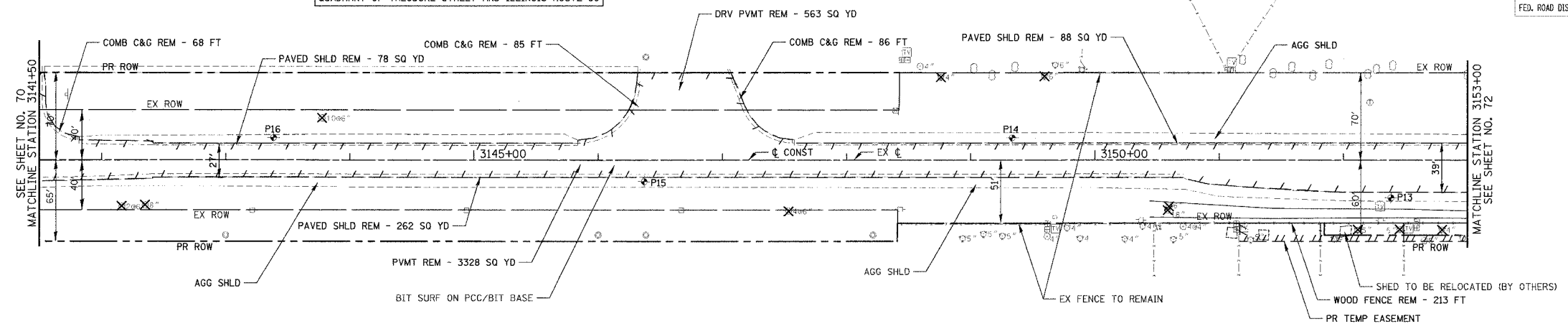


F.A.P. RTE.	SECTION	COUNTY	TOTAL SHEETS	SHEET NO.
338	114R-1	WILL	355	71
STA. 3141+50		TO STA. 3153+00		
FED. ROAD DIST. NO. 1		ILLINOIS FED. AID PROJECT		

- EXISTING PLAN LEGEND:**
- REMOVAL LIMITS (PAVEMENT, SHOULDER, DRIVEWAYS, C&G, AND MEDIANS)
  - GUARD RAIL/FENCE REMOVAL
  - ▨ SIDEWALK REMOVAL
  - SELECTIVE CLEARING
  - ✕ TREE REMOVAL
  - ⊕ SOIL BORING LOCATION
  - A AGGREGATE DRIVEWAY
  - B BITUMINOUS DRIVEWAY
  - C CONCRETE DRIVEWAY

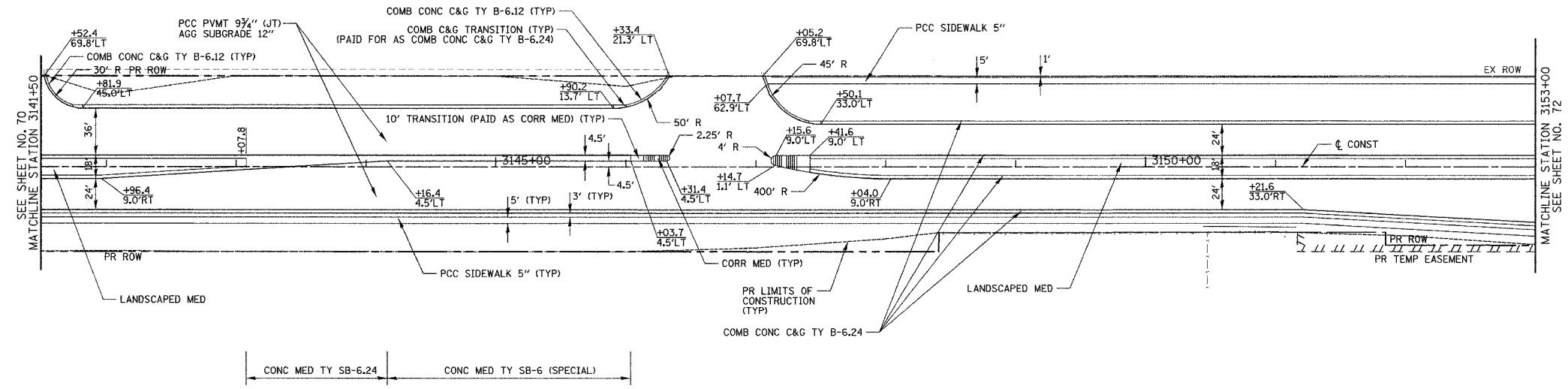
THE CONTRACTOR AND RESIDENT ENGINEER SHALL COORDINATE ACTIVITIES WITH IDOT PERMIT 1-1-07-0529 WHICH PERMITS IMPROVEMENTS AT THE NORTHWEST QUADRANT OF THEODORE STREET AND ILLINOIS ROUTE 59



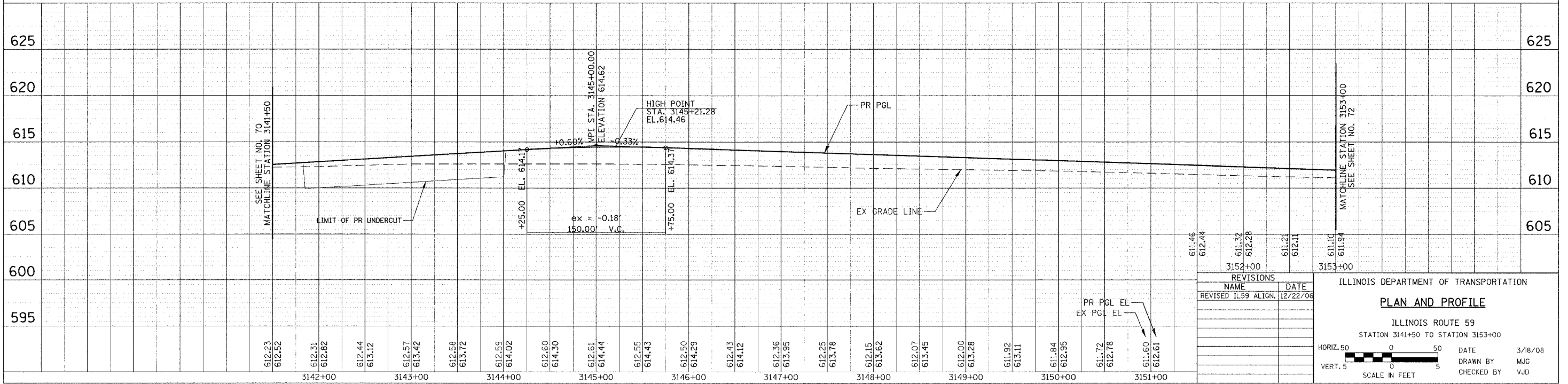
EXISTING VIEW

**NOTES**

- FOR CONCRETE MEDIAN DETAILS SEE SHEET NO.189



PROPOSED VIEW



REVISIONS	
NAME	DATE
REVISOR	12/22/06
611.46	
612.44	
611.32	
612.28	
611.21	
612.11	
611.10	
611.94	

ILLINOIS DEPARTMENT OF TRANSPORTATION

**PLAN AND PROFILE**

ILLINOIS ROUTE 59  
STATION 3141+50 TO STATION 3153+00

HORIZ. 50 0 50 DATE 3/18/08  
VERT. 5 0 5 DRAWN BY MUG  
SCALE IN FEET CHECKED BY VJD

PLAN	REVISED	DATE
NOTE BOOK	FILED	
NO.	BY	

PROFILE	REVISED	DATE
NOTE BOOK	FILED	
NO.	BY	