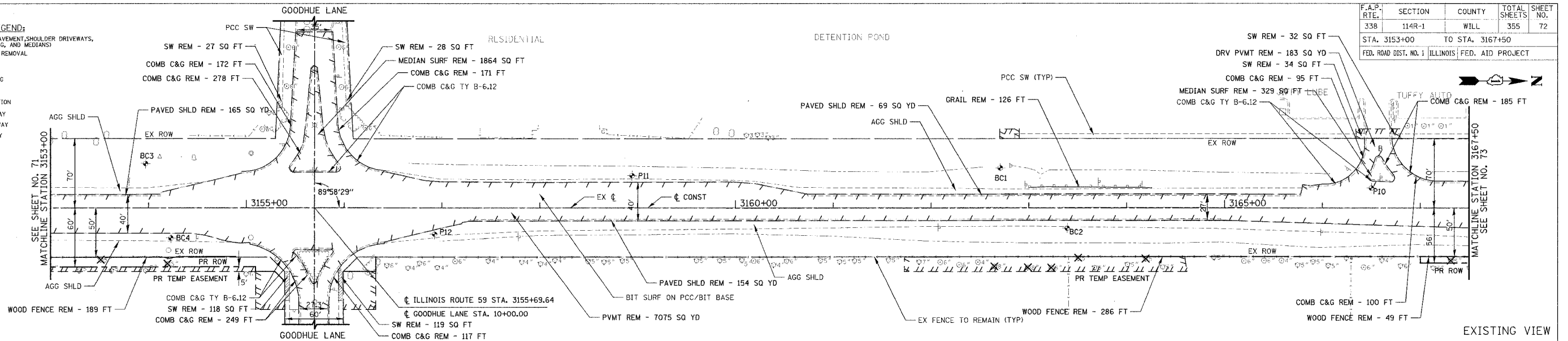
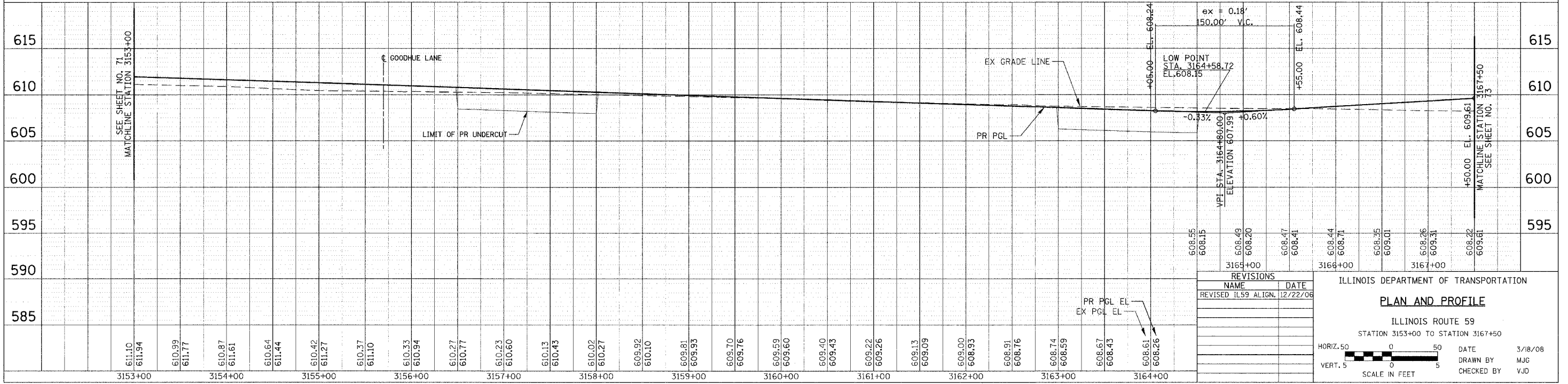
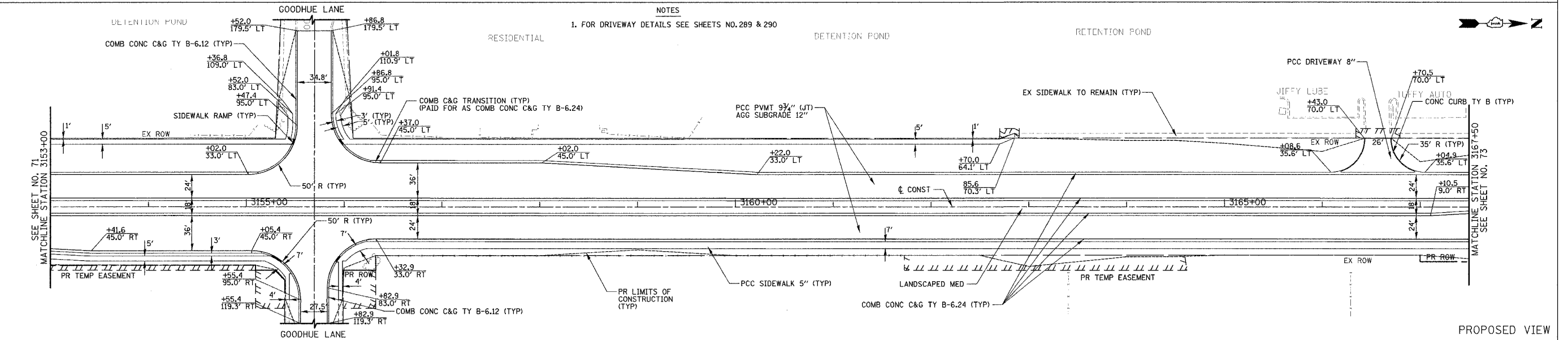


F.A.P. RTE.	SECTION	COUNTY	TOTAL SHEETS	SHEET NO.
338	114R-1	WILL	355	72
STA. 3153+00		TO STA. 3167+50		
FED. ROAD DIST. NO. 1		ILLINOIS FED. AID PROJECT		

- EXISTING PLAN LEGEND:**
- REMOVAL LIMITS (PAVEMENT, SHOULDER, DRIVEWAYS, C&G, AND MEDIANS)
 - GUARD RAIL/FENCE REMOVAL
 - SIDEWALK REMOVAL
 - SELECTIVE CLEARING
 - TREE REMOVAL
 - SOIL BORING LOCATION
 - A AGGREGATE DRIVEWAY
 - B BITUMINOUS DRIVEWAY
 - C CONCRETE DRIVEWAY



NOTES
1. FOR DRIVEWAY DETAILS SEE SHEETS NO. 289 & 290



REVISIONS

NO.	NAME	DATE
1	REVISED ILS9 ALIGN.	12/22/06

ILLINOIS DEPARTMENT OF TRANSPORTATION

PLAN AND PROFILE

ILLINOIS ROUTE 59
STATION 3153+00 TO STATION 3167+50

HORIZ. 50
VERT. 5

SCALE IN FEET

DATE: 3/18/08
DRAWN BY: MJG
CHECKED BY: VJD

PLAN

NO.	DATE	BY

PROFILE

NO.	DATE	BY