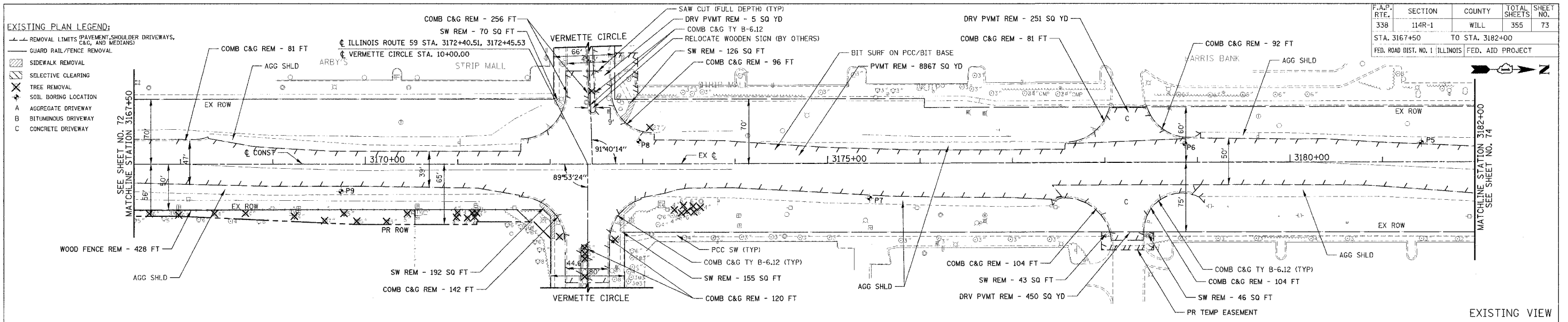
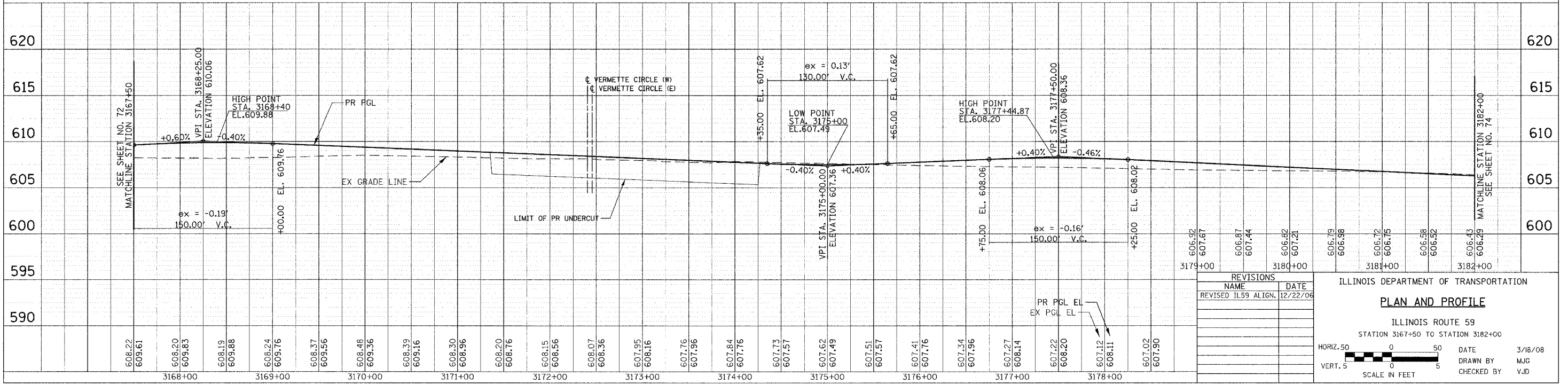
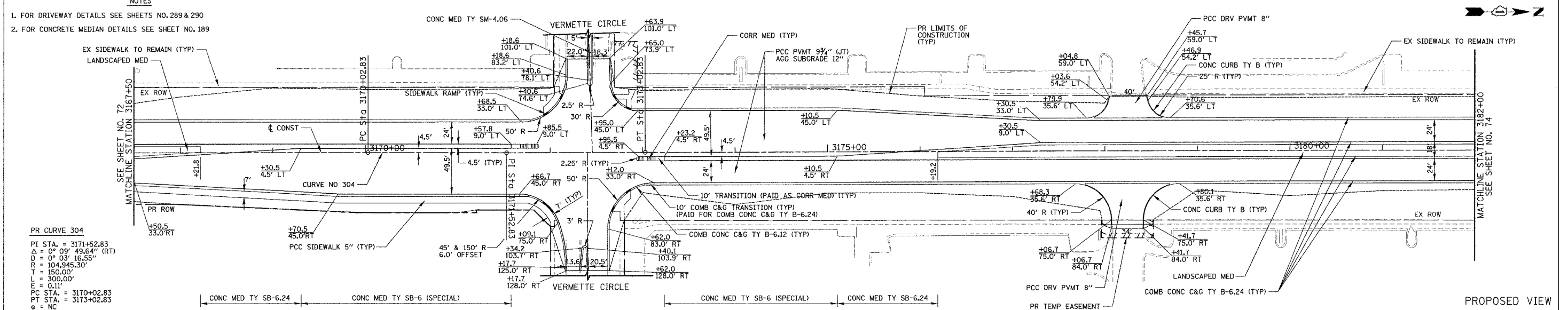


F.A.P. RTE.	SECTION	COUNTY	TOTAL SHEETS	SHEET NO.
338	114R-1	WILL	355	73
STA. 3167+50		TO STA. 3182+00		
FED. ROAD DIST. NO. 1 ILLINOIS FED. AID PROJECT				

- EXISTING PLAN LEGEND:**
- REMOVAL LIMITS (PAVEMENT, SHOULDER DRIVEWAYS, C&G, AND MEDIANS)
  - GUARD RAIL/FENCE REMOVAL
  - SIDEWALK REMOVAL
  - SELECTIVE CLEARING
  - TREE REMOVAL
  - SOIL BORING LOCATION
  - AGGREGATE DRIVEWAY
  - BITUMINOUS DRIVEWAY
  - CONCRETE DRIVEWAY



- NOTES**
- FOR DRIVEWAY DETAILS SEE SHEETS NO. 289 & 290
  - FOR CONCRETE MEDIAN DETAILS SEE SHEET NO. 189



REVISIONS	
NAME	DATE
REVISOR	12/22/06

ILLINOIS DEPARTMENT OF TRANSPORTATION

**PLAN AND PROFILE**

ILLINOIS ROUTE 59  
STATION 3167+50 TO STATION 3182+00

HORIZ. 50 0 50 DATE 3/18/08  
VERT. 5 0 5 DRAWN BY MJG  
SCALE IN FEET CHECKED BY VJD

PLAN	DATE

PROFILE	DATE