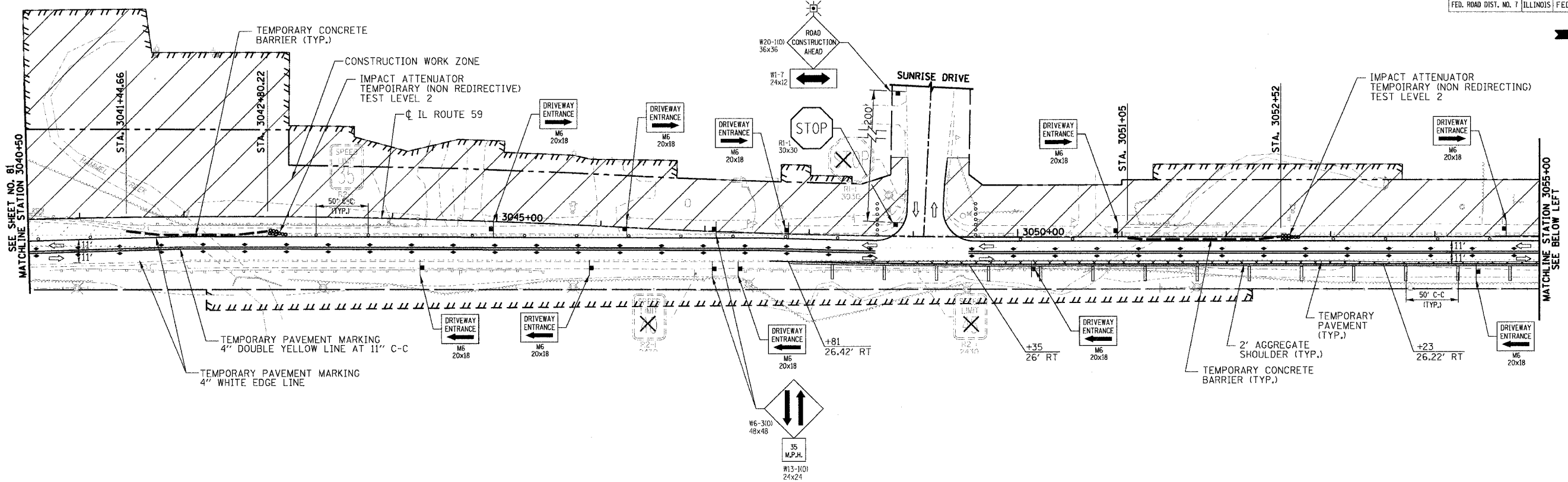
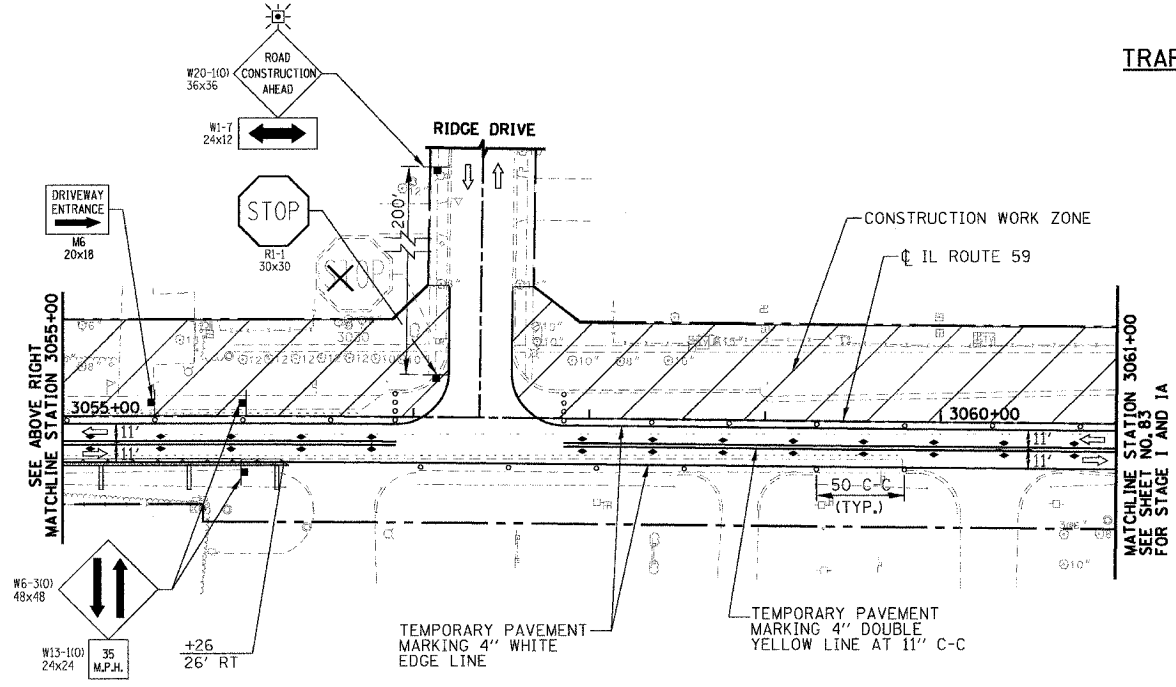


RTE	SECTION	COUNTY	TOTAL SHEETS	SHEET NO.
338	114R-1	WILL	355	82
STA. 3040+50		TO STA. 3061+00		
FED. ROAD DIST. NO. 7 ILLINOIS FED. AID PROJECT				



STAGE I CONSTRUCTION
TRAFFIC CONTROL AND PROTECTION



STAGE I CONSTRUCTION
TRAFFIC CONTROL AND PROTECTION

PLAN	DATE
BY	
DATE	
BY	
DATE	
BY	
DATE	

PROFILE	DATE
BY	
DATE	
BY	
DATE	
BY	
DATE	

FOR LEGEND
SEE SHEET NO. 81

REVISIONS	
NAME	DATE

ILLINOIS DEPARTMENT OF TRANSPORTATION
SUGGESTED CONSTRUCTION PROCEDURE
AND MAINTENANCE OF TRAFFIC STAGE I
ILLINOIS ROUTE 59

STATION 3040+50 TO STATION 3061+00

DATE: 3/18/08
DRAWN BY: NM, RM
CHECKED BY: AS

SCALE IN FEET