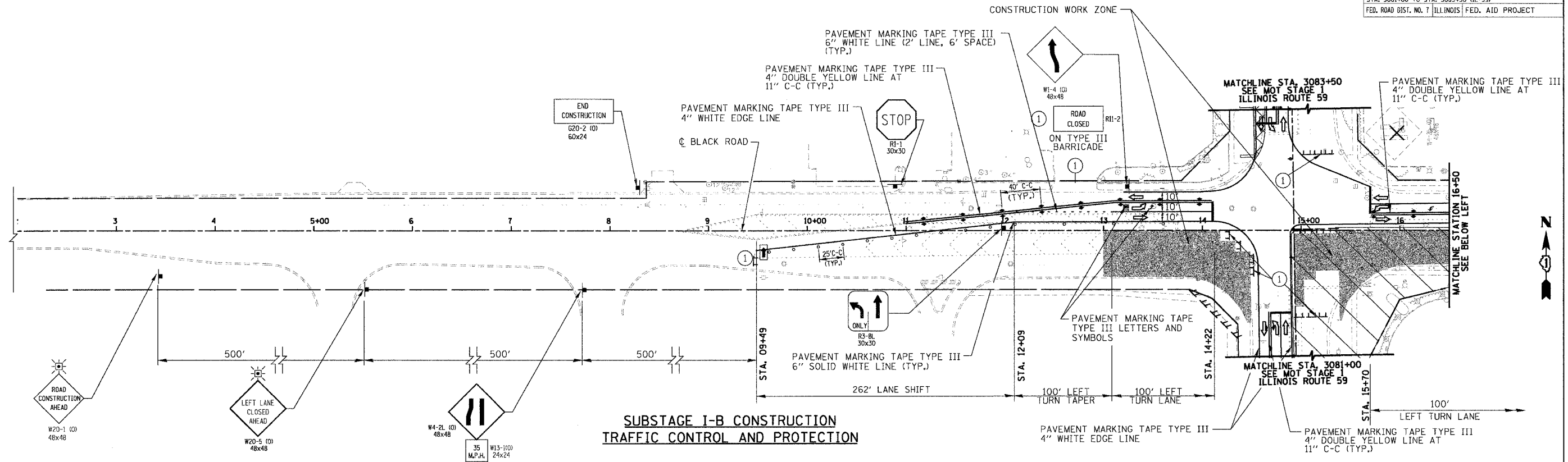


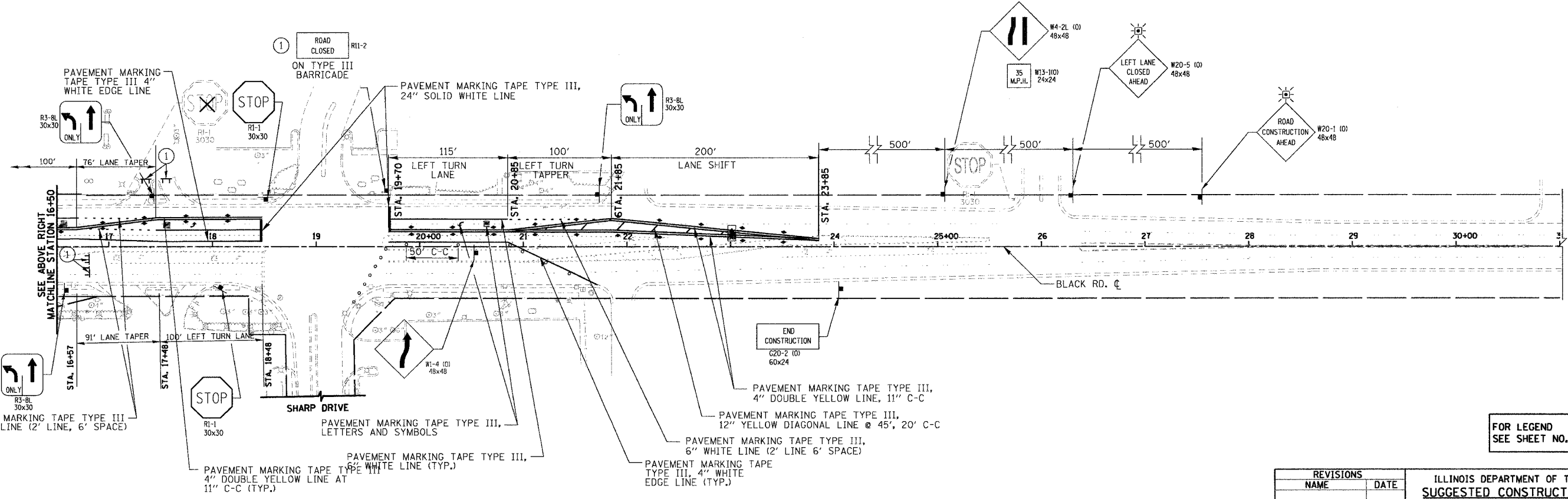
RTE	SECTION	COUNTY	TOTAL SHEETS	SHEET NO.
338	114R-1	WILL	355	90
STA. 2+00 TO STA. 31+00 (BLACK ROAD)				
STA. 3081+00 TO STA. 3083+50 (IL-59)				
FED. ROAD DIST. NO. 7 ILLINOIS FED. AID PROJECT				

PLAN	DATE	BY
REVISIONS		
NOTES		
NO.		



**SUBSTAGE I-B CONSTRUCTION
TRAFFIC CONTROL AND PROTECTION**

PROFILE	DATE	BY
REVISIONS		
NOTES		
NO.		



**SUBSTAGE I-B CONSTRUCTION
TRAFFIC CONTROL AND PROTECTION**

FOR LEGEND
SEE SHEET NO. 81

REVISIONS	
NAME	DATE

ILLINOIS DEPARTMENT OF TRANSPORTATION
**SUGGESTED CONSTRUCTION PROCEDURE
AND MAINTENANCE OF TRAFFIC STAGE I**
BLACK ROAD SUBSTAGE I-B

DATE: 3/18/08
DRAWN BY: NM, RM
CHECKED BY: AS

