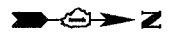
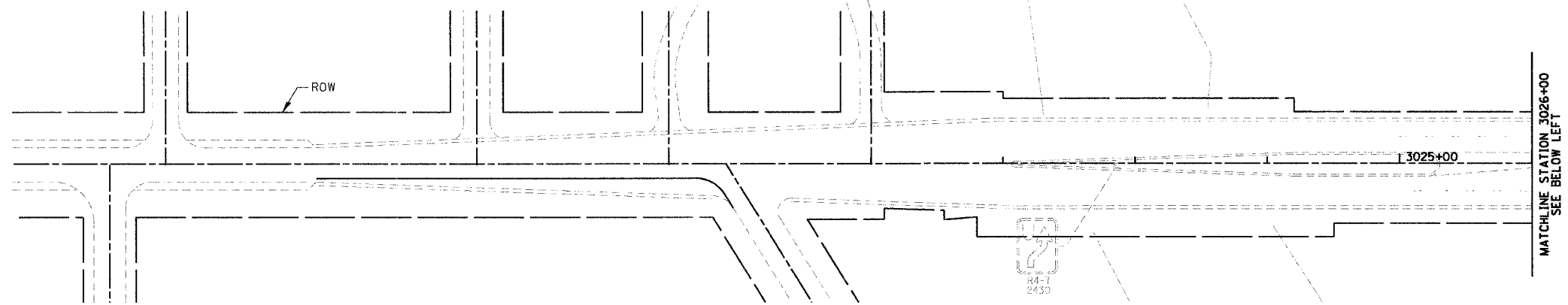


RTE	SECTION	COUNTY	TOTAL SHEETS	SHEET NO.
338	114R-1	WILL	355	99
STA. 3032+25.77		TO STA. 3040+50		
FED. ROAD DIST. NO. 7		ILLINOIS FED. AID PROJECT		

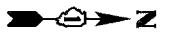


PLAN	DATE
SURVEYED	BY
PLOTTED	BY
CHECKED	BY
NOTE BOOK NO.	NO.
FILE NAME	

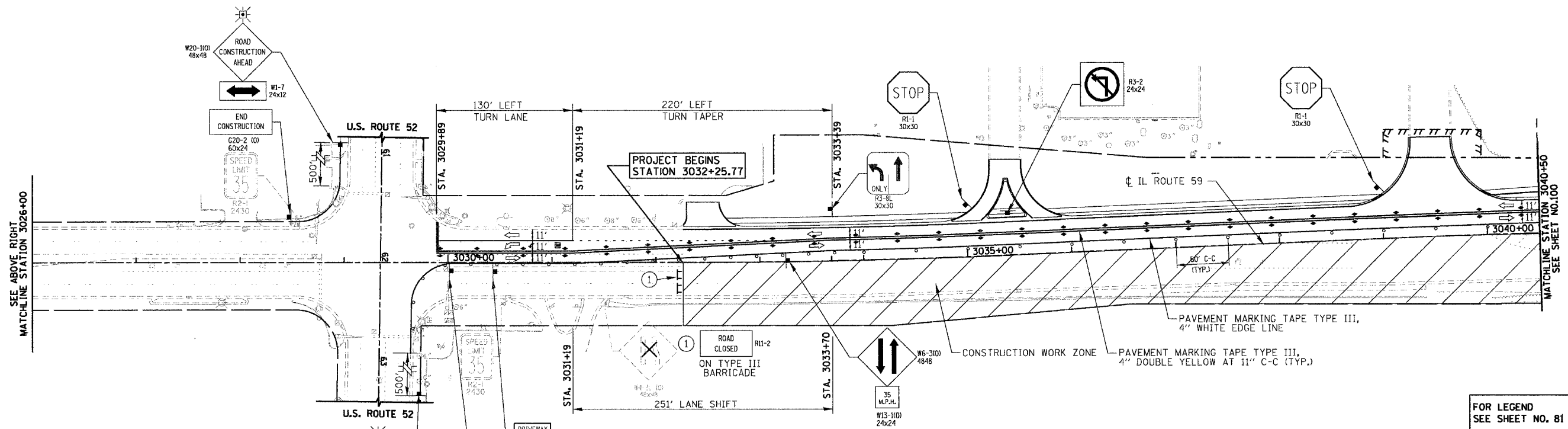


COORDINATION IS REQUIRED WITH ADJACENT CONTRACT (60363) FOR COMPATIBILITY OF ROADWAY STAGING ALONG IL ROUTE 59 NORTH AND SOUTH OF US52 AT ALL TIMES. THE ENGINEER FOR THE ADJACENT CONTRACT (60363) WILL BE NOTIFIED A MINIMUM OF 2 WEEKS IN ADVANCE OF ANY POTENTIAL STAGE CONFIGURATION CHANGES NORTH OF US52 WHICH MAY AFFECT THE STAGING SOUTH OF US52.

**STAGE II CONSTRUCTION
TRAFFIC CONTROL AND PROTECTION**



PROFILE	DATE
SURVEYED	BY
PLOTTED	BY
CHECKED	BY
NOTE BOOK NO.	NO.
FILE NAME	



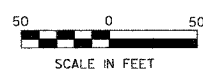
FOR LEGEND
SEE SHEET NO. 81

**STAGE II CONSTRUCTION
TRAFFIC CONTROL AND PROTECTION**

REVISIONS	
NAME	DATE

ILLINOIS DEPARTMENT OF TRANSPORTATION
**SUGGESTED CONSTRUCTION PROCEDURE
AND MAINTENANCE OF TRAFFIC STAGE II**
ILLINOIS ROUTE 59

STATION 3032+25.77 TO STATION 3040+50



DATE: 3/18/08
DRAWN BY: NM, RM
CHECKED BY: AS