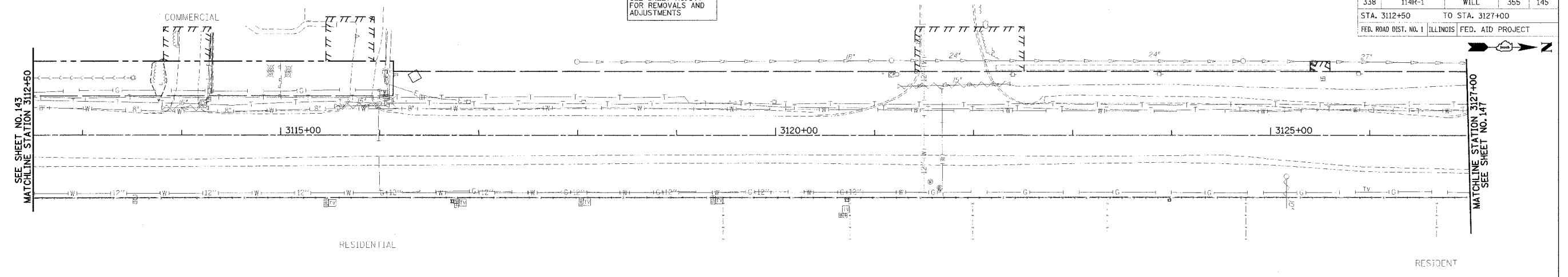
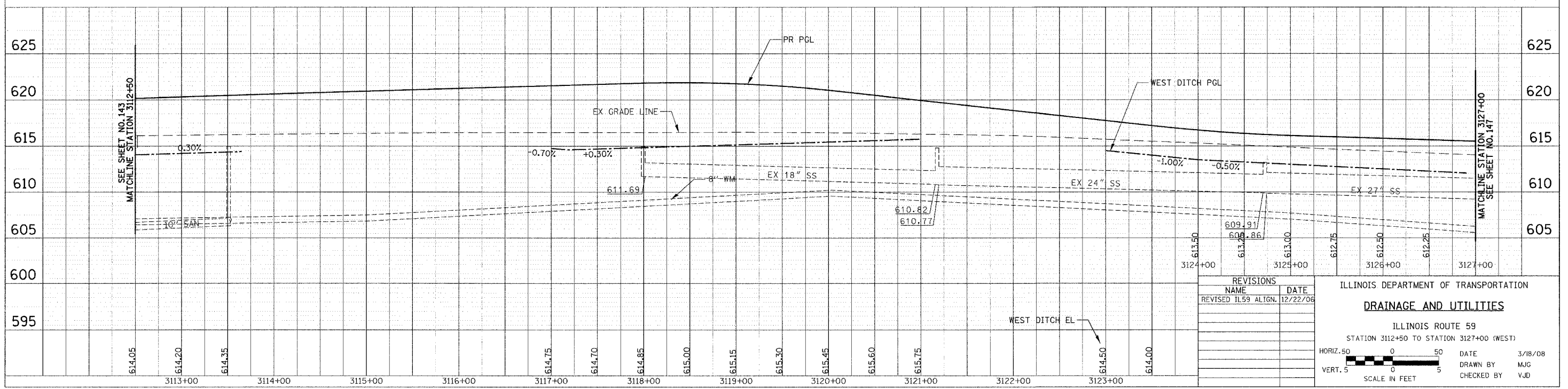
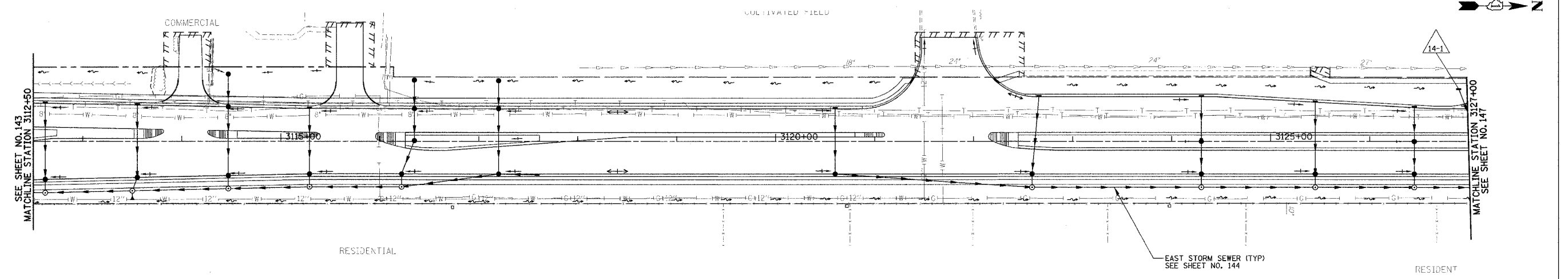


F.A.P. RTE. 1	SECTION 114R-1	COUNTY WLL	TOTAL SHEETS 355	SHEET NO. 145
STA. 3112+50		TO STA. 3127+00		
FED. ROAD DIST. NO. 1		ILLINOIS		FED. AID PROJECT

SEE SHEET NO. 144 FOR REMOVALS AND ADJUSTMENTS



FOR DRAINAGE LEGEND SEE SHEET NO. 132



REVISIONS	
NAME	DATE
REVISED IL59 ALIGN.	12/22/06
609.91	
608.86	
613.00	
613.75	
612.50	
612.25	

ILLINOIS DEPARTMENT OF TRANSPORTATION
DRAINAGE AND UTILITIES
 ILLINOIS ROUTE 59
 STATION 3112+50 TO STATION 3127+00 (WEST)

HORIZ. 50 0 50
 VERT. 5 0 5
 SCALE IN FEET

DATE 3/18/08
 DRAWN BY MJG
 CHECKED BY VJD

PLAN	DATE	BY
EXHIBIT		
NOTE BOOK		
NO.		
FILE NAME		

PROJECT	DATE	BY
STRUCTURE		
NO.		
FILE NAME		