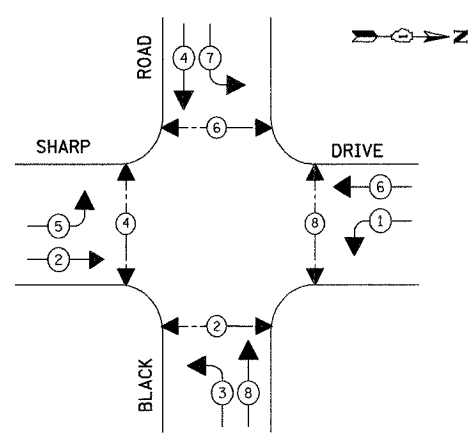


TEMPORARY CABLE PLAN
NOT TO SCALE

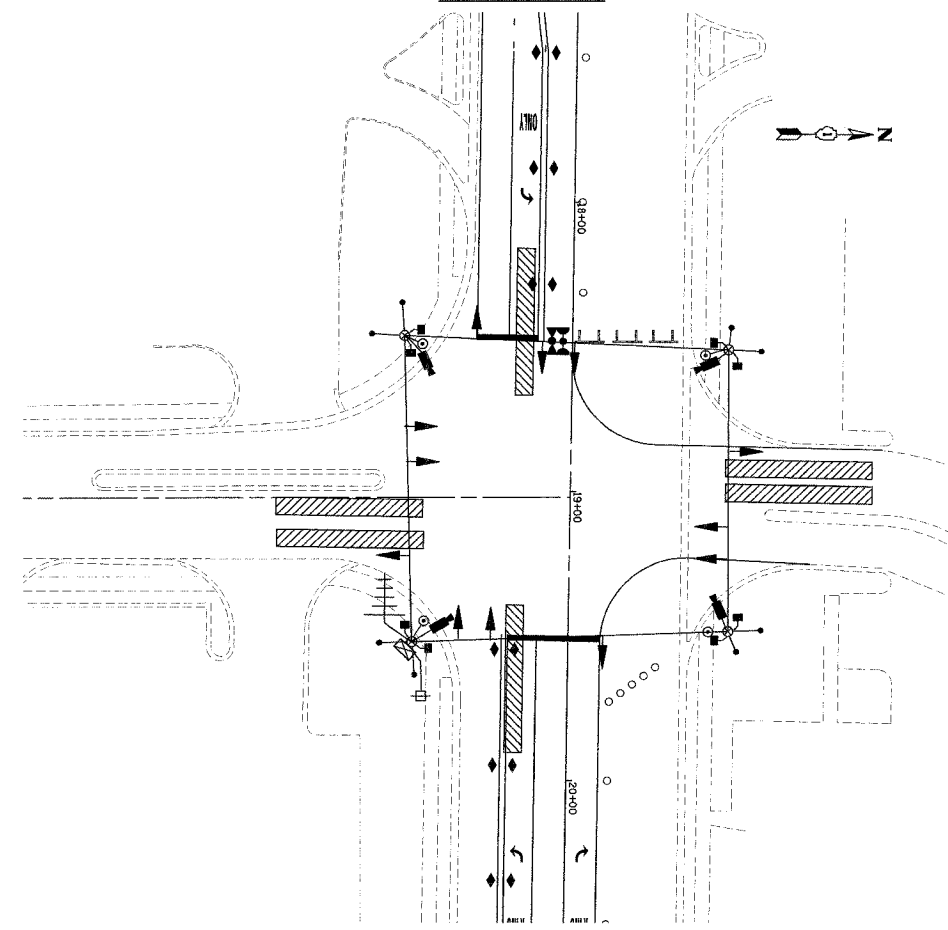
TEMPORARY CONTROLLER SEQUENCE



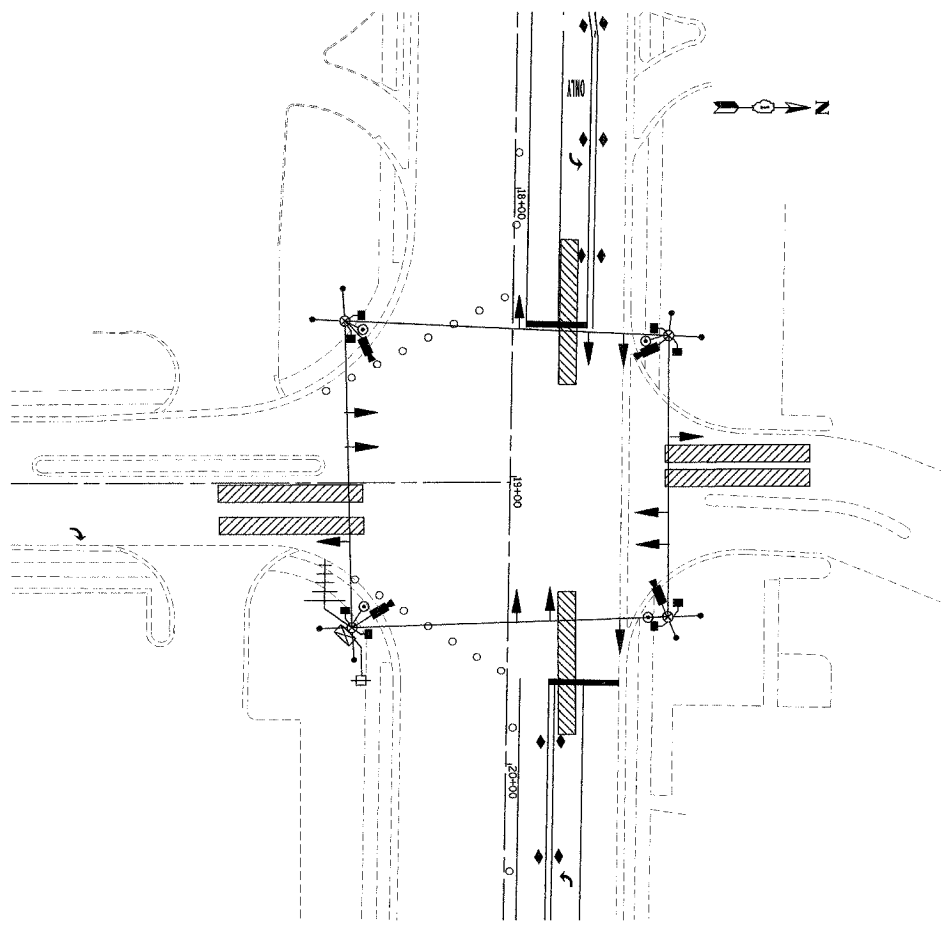
- LEGEND**
- ◀ (with star) ▶ DUAL ENTRY PHASE
 - ◀ (with star) ▶ PEDESTRIAN PHASE
 - * NUMBER REFERS TO ASSOCIATED PHASE

TEMPORARY PHASE DESIGNATION DIAGRAM

M.O.T. STAGE 1



M.O.T. STAGE 2



NOTE:
1. AN APPROVED IDOT SUBCONTRACTOR MUST INSTALL AND ADJUST VIDEO VEHICLE DETECTION SYSTEM AS REQUIRED BY STAGE/ PHASE CHANGES. ADJUSTMENT WILL BE REQUIRED BETWEEN PRIMARY AND SECONDARY.

TEMPORARY CABLE DIAGRAM LEGEND

- [R] TEMPORARY TRAFFIC SIGNAL SECTION OR PEDESTRIAN SIGNAL SECTION, 12" (300mm)
- [Cabinet] TEMPORARY CONTROLLER CABINET
- [Square] TEMPORARY SERVICE INSTALLATION
- (5) INDICATES NUMBER OF CONDUCTORS IN CABLE. ALL CONDUCTORS TO BE NUMBER 14 AWG WIRE UNLESS OTHERWISE NOTED.
- [Star] EMERGENCY VEHICLE LIGHT DETECTOR
- [Beacon] CONFIRMATION BEACON
- [Camera] VIDEO DETECTION CAMERA
- (C) COAXIAL CABLE
- [Antenna] TEMPORARY RADIO INTERCONNECT ANTENNA

NOTE:
PUSH BUTTON "A" SHALL PLACE A CALL IN PHASES 2 AND 4
PUSH BUTTON "B" SHALL PLACE A CALL IN PHASES 4 AND 6
PUSH BUTTON "C" SHALL PLACE A CALL IN PHASES 6 AND 8
PUSH BUTTON "D" SHALL PLACE A CALL IN PHASES 2 AND 8

TYPE	NO. LAMPS	WATTAGE	LED	% OPERATION	TOTAL WATTAGE
SIGNAL (RED)	12	135	17	0.50	102
(YELLOW)	12	135	25	0.25	75
(GREEN)	12	135	15	0.25	45
ARROW	16	135	12	0.10	19.2
PED. SIGNAL	8	90	25	1.00	200
CONTROLLER	1	100	100	1.00	100
ILLUM. SIGN		84	64	0.05	
FLASHER				0.50	
ENERGY COSTS TO:	TOTAL =				541.2

ILLINOIS DEPARTMENT OF TRANSPORTATION
DIVISION OF HIGHWAY/DISTRICT 1
201 WEST CENTER COURT/SCHAUMBURG, ILLINOIS 60196-1096
ENERGY SUPPLY CONTACT: JUDY MILLER
PHONE: 815-724-5717
COMPANY: COMMONWEALTH EDISON

REVISIONS	
NAME	DATE
REVISED IL59 ALIGN.	12/22/06

ILLINOIS DEPARTMENT OF TRANSPORTATION
TEMPORARY TRAFFIC SIGNAL CABLE PLAN AND PHASE DESIGNATION DIAGRAM
SHARP DR AT BLACK ROAD
SCALE: NONE
DATE: 3/18/08
DRAWN BY: BAR
DESIGNED BY: FA
CHECKED BY: KMM

DATE	BY	REVISION

DATE	BY	REVISION