

SCHEDULE OF QUANTITIES

ITEM	UNIT	QUANTITY
SIGN PANEL - TYPE 1	SQ FT	33
CONDUIT IN TRENCH, 2" DIA., GALVANIZED STEEL	FOOT	979
CONDUIT IN TRENCH, 2 1/2" DIA., GALVANIZED STEEL	FOOT	78
CONDUIT IN TRENCH, 4" DIA., GALVANIZED STEEL	FOOT	42
CONDUIT IN TRENCH, 5" DIA., GALVANIZED STEEL	FOOT	10
CONDUIT PUSHED, 2" DIA., GALVANIZED STEEL	FOOT	280
CONDUIT PUSHED, 2 1/2" DIA., GALVANIZED STEEL	FOOT	20
CONDUIT PUSHED, 4" DIA., GALVANIZED STEEL	FOOT	477
HANDHOLE	EACH	6
HEAVY-DUTY HANDHOLE	EACH	4
DOUBLE HANDHOLE	EACH	2
TRENCH AND BACKFILL FOR ELECTRICAL WORK	FOOT	1,109
FULL-ACTUATED CONTROLLER AND TYPE V CABINET, SPECIAL TRANSCEIVER - FIBER OPTIC	EACH	1
ELECTRIC CABLE IN TRENCH, SIGNAL, NO. 14 2C	FOOT	713
ELECTRIC CABLE IN CONDUIT, SIGNAL NO. 14 3C	FOOT	1,831
ELECTRIC CABLE IN CONDUIT, SIGNAL NO. 14 5C	FOOT	562
ELECTRIC CABLE IN CONDUIT, SIGNAL NO. 14 7C	FOOT	3,020
ELECTRIC CABLE IN CONDUIT, LEAD-IN, NO. 14 1 PAIR	FOOT	4,789
ELECTRIC CABLE IN CONDUIT, SERVICE, NO. 6 2 C	FOOT	80
TRAFFIC SIGNAL POST, GALVANIZED STEEL 16 FT.	EACH	2
STEEL MAST ARM ASSEMBLY AND POLE, 28 FT.	EACH	1
STEEL MAST ARM ASSEMBLY AND POLE, 38 FT.	EACH	1
CONCRETE FOUNDATION, TYPE A	FOOT	8
CONCRETE FOUNDATION, TYPE C	FOOT	4
CONCRETE FOUNDATION, TYPE E 30-INCH DIAMETER	FOOT	10
CONCRETE FOUNDATION, TYPE E 36-INCH DIAMETER	FOOT	46
SIGNAL HEAD, LED, 1-FACE, 3-SECTION, MAST-ARM MOUNTED	EACH	1
SIGNAL HEAD, LED, 1-FACE, 5-SECTION, MAST-ARM MOUNTED	EACH	11
SIGNAL HEAD, LED, 2-FACE, 5-SECTION, BRACKET MOUNTED	EACH	1
SIGNAL HEAD, LED, 2-FACE, 1-3 SECTION, 1-5 SECTION, BRACKET MOUNTED	EACH	1
PEDESTRIAN SIGNAL HEAD, LED, 1-FACE, BRACKET MOUNTED	EACH	2
PEDESTRIAN SIGNAL HEAD, LED, 2-FACE, BRACKET MOUNTED	EACH	3
TRAFFIC SIGNAL BACKPLATE, LOUVERED, ALUMINUM	EACH	12
INDUCTIVE LOOP DETECTOR	EACH	15
* LIGHT DETECTOR	EACH	2
* LIGHT DETECTOR AMPLIFIER	EACH	1
PEDESTRIAN PUSH-BUTTON	EACH	4
TEMPORARY TRAFFIC SIGNAL INSTALLATION	EACH	1
REMOVE EXISTING TRAFFIC SIGNAL EQUIPMENT	EACH	1
REMOVE EXISTING HANDHOLE	EACH	9
REMOVE EXISTING CONCRETE FOUNDATION	EACH	1
PREFORMED DETECTOR LOOP	FOOT	863
TEMPORARY TRAFFIC SIGNAL TIMING	EACH	1
SERVICE INSTALLATION - POLE MOUNTED	EACH	1
ELECTRIC CABLE IN CONDUIT, GROUNDING, NO. 6 1C	FOOT	758
* ELECTRIC CABLE IN CONDUIT NO. 20 3/C, TWISTED, SHIELDED	FOOT	347
TEMPORARY TRAFFIC SIGNAL INTERCONNECT	EACH	1
UNINTERRUPTIBLE POWER SUPPLY	EACH	1
STEEL MAST ARM ASSEMBLY AND POLE WITH DUAL MAST ARMS, 48 FT. AND 28 FT.	EACH	1
STEEL MAST ARM ASSEMBLY AND POLE WITH DUAL MAST ARMS, 54 FT. AND 22 FT.	EACH	1

* 100% OF THE COST FOR EMERGENCY VEHICLE PREEMPTION ITEMS WILL BE PAID FOR BY CITY OF JOLIET.

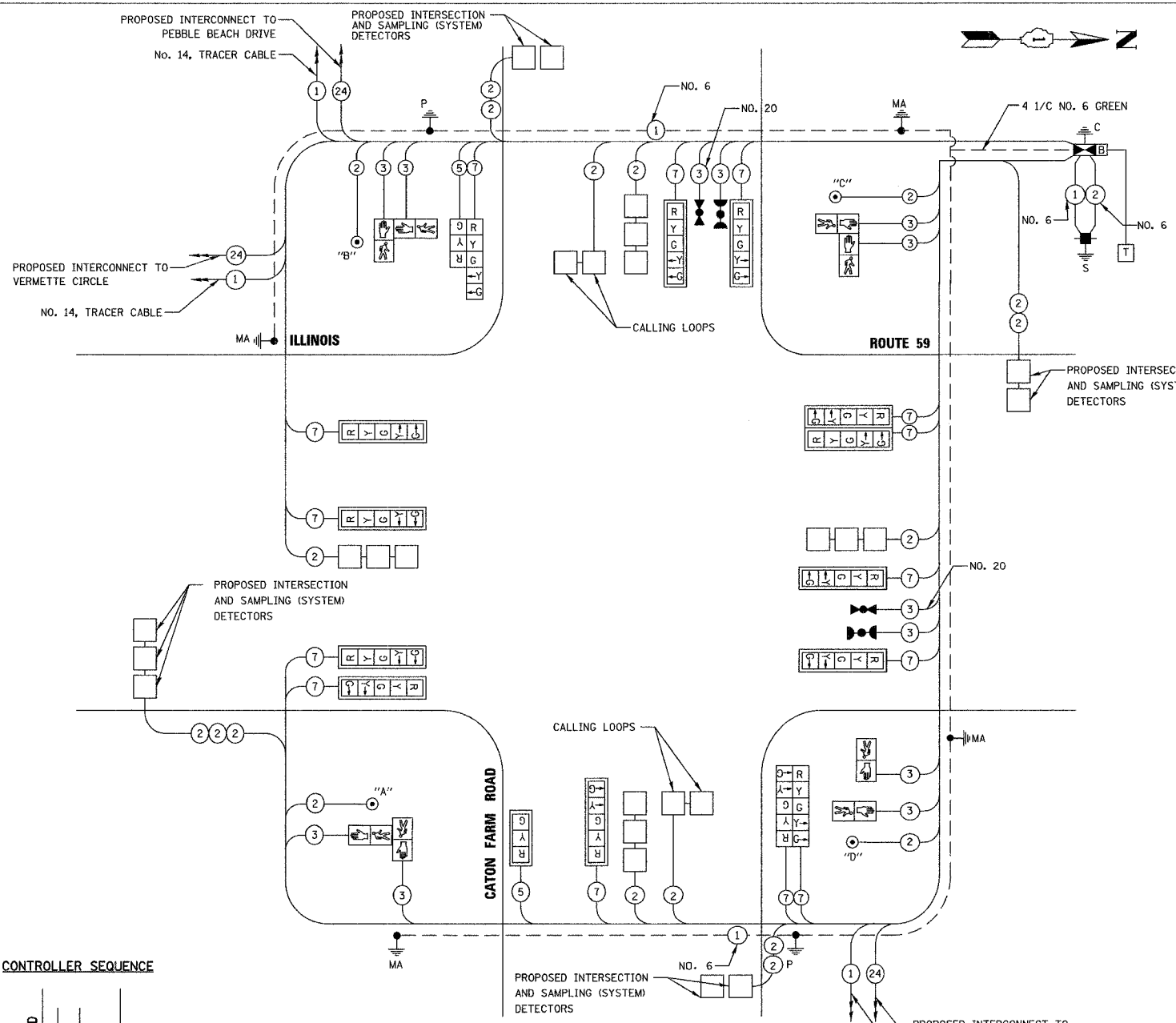
NOTE: ALL LOOP DETECTION SHOWN ON THIS PLAN WILL BE "PREFORMED" DETECTION LOOPS.

THE TRAFFIC SIGNAL CONTROL EQUIPMENT FOR THIS SIGNAL SHALL BE "ECONOLITE" TO MATCH THE EXISTING ADJACENT SYSTEM.

TYPE	NO. LAMPS	WATTAGE INCAND	LED X % OPERATION	TOTAL WATTAGE	
SIGNAL (RED)	16	135	17	0.50	136
(YELLOW)	16	135	25	0.25	100
(GREEN)	16	135	15	0.25	60
ARROW	28	135	12	0.10	33.6
PED. SIGNAL	8	90	25	1.00	200
CONTROLLER	1	100	100	1.00	100
ILLUM. SIGN	1	84	64	0.05	
FLASHER			0.50		
TOTAL =				629.6	

ILLINOIS DEPARTMENT OF TRANSPORTATION
 DIVISION OF HIGHWAY/DISTRICT 1
 201 WEST CENTER COURT/SCHAUMBURG, ILLINOIS 60196-1096
 ENERGY SUPPLY CONTACT: JUDY MILLER
 PHONE: 815-724-5717
 COMPANY: COMMONWEALTH EDISON

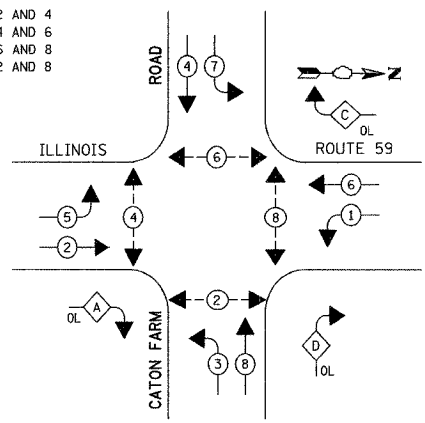
FOUNDATION (DEPTH)	FT. (m)	CABLE SLACK	FT. (m)	VERTICAL	FT. (m)
TYPE A - POST	4 (1.2)	HANDHOLE	6.5 (2.0)	ALL FOUNDATIONS	3.5 (1.0)
C & D - CONTROLLER	4 (1.2)	DOUBLE HANDHOLE	13 (4.0)	MAST ARM (L) POLE	20'+L-2"
E - M. ARM POLE		SIGNAL POST	2 (1.0)		(6m+L-0.6m)=
30" (750mm)	13.5 (4.1)	CONTROLLER CAB.	1 (0.5)	BRACKET MOUNTED	13 (4.0)
36" (900mm)	15 (4.6)	FIBER OPTIC	13 (4.0)	PED. PUSHBUTTON	4 (1.2)
		ELECTRIC SERVICE	1 (0.5)	ELECTRIC SERVICE	13.5 (4.1)
		GROUND CABLE	1 (0.5)	SERVICE TO GROUND	13.5 (4.1)
		POST MOUNTED	6 (1.8)		



CABLE PLAN LEGEND

- | EXISTING | PROPOSED | |
|----------|----------|--|
| | | 8" (200mm) TRAFFIC SIGNAL SECTION |
| | | 12" (300mm) TRAFFIC SIGNAL SECTION |
| | | 12" (300mm) PEDESTRIAN SIGNAL SECTION |
| | | 12" (300mm) PEDESTRIAN SIGNAL SECTION |
| | | CONTROLLER CABINET |
| | | SERVICE INSTALLATION |
| | | TELEPHONE CONNECTION |
| | | VEHICLE DETECTOR, INDUCTION LOOP |
| | | MAGNETIC DETECTOR |
| | | EMERGENCY VEHICLE LIGHT DETECTOR |
| | | CONFIRMATION BEACON |
| | | PUSHBUTTON DETECTOR |
| | | DENOTES NUMBER OF CONDUCTORS
ALL CABLE NO. 14 EXCEPT AS INDICATED
ALL LOOP DETECTOR CABLE TO BE SHIELDED |
| | | GROUND CABLE IN CONDUIT
NO. 6 SOLID COPPER (GREEN) |
| | | FIBER OPTIC CABLE IN CONDUIT
NO. 62.5/125 2-MM12F & 5M12F |
| | | RAILROAD CONTROL CABINET |
| | | ILLUMINATED SIGN
"NO LEFT TURN" |
| | | ILLUMINATED SIGN
"NO RIGHT TURN" |
| | | SIGNAL FACE WITH BACKPLATE
"P" INDICATES PROGRAMMED HEAD |
| | | GROUND ROD AT HANDHOLE (H),
DOUBLE HANDHOLE (HH), OR CONTROLLER (C) |
| | | GROUND ROD AT POST (P)
OR MAST ARM POLE (MA) |
| | | GROUND ROD AT ELECTRIC
SERVICE INSTALLATION |
| | | UNINTERRUPTIBLE POWER SUPPLY (UPS) |

CONTROLLER SEQUENCE



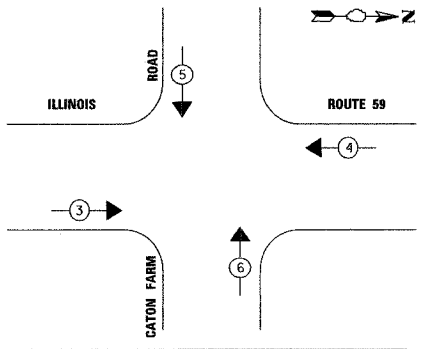
PUSH BUTTON "A" SHALL PLACE A CALL IN PHASES 2 AND 4
 PUSH BUTTON "B" SHALL PLACE A CALL IN PHASES 4 AND 6
 PUSH BUTTON "C" SHALL PLACE A CALL IN PHASES 6 AND 8
 PUSH BUTTON "D" SHALL PLACE A CALL IN PHASES 2 AND 8

PHASE DESIGNATION DIAGRAM

- LEGEND**
- DUAL ENTRY PHASE
 - OVERLAP
 - PEDESTRIAN PHASE
 - * NUMBER REFERS TO ASSOCIATED PHASE

CABLE PLAN

EMERGENCY VEHICLE PREEMPTION SEQUENCE



PROPOSED EMERGENCY VEHICLE PREEMPTORS

EMERGENCY VEHICLE PREEMPTOR	3	4	5	6
MOVEMENT	→	←	↓	↑

REVISIONS

NAME	DATE
REVISED IL59 ALIGN.	12/22/08

ILLINOIS DEPARTMENT OF TRANSPORTATION
**CABLE PLAN,
 PHASE DESIGNATION DIAGRAM,
 AND SCHEDULE OF QUANTITIES**
 ILLINOIS ROUTE 59 AT CATON FARM ROAD

SCALE: NONE
 DATE 3/18/08

DRAWN BY BAR
 DESIGNED BY FA
 CHECKED BY KMM