

Benchmark:  
Square cut in center of 13' Headwall, 21' West of IL Route 59  
North of Sunrise Drive, Elevation 598.12

Existing Structure:  
None.

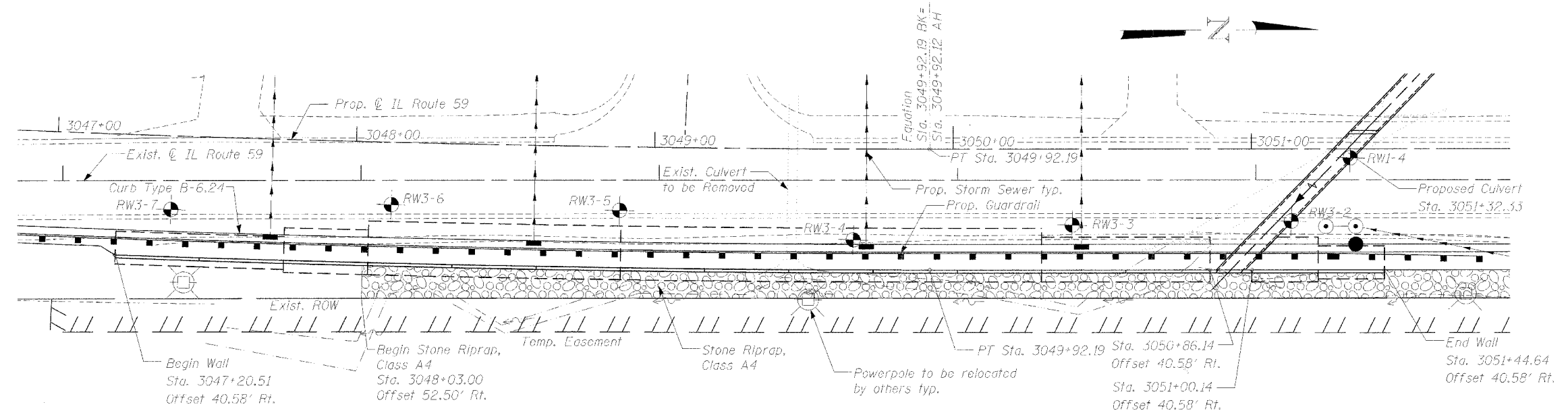
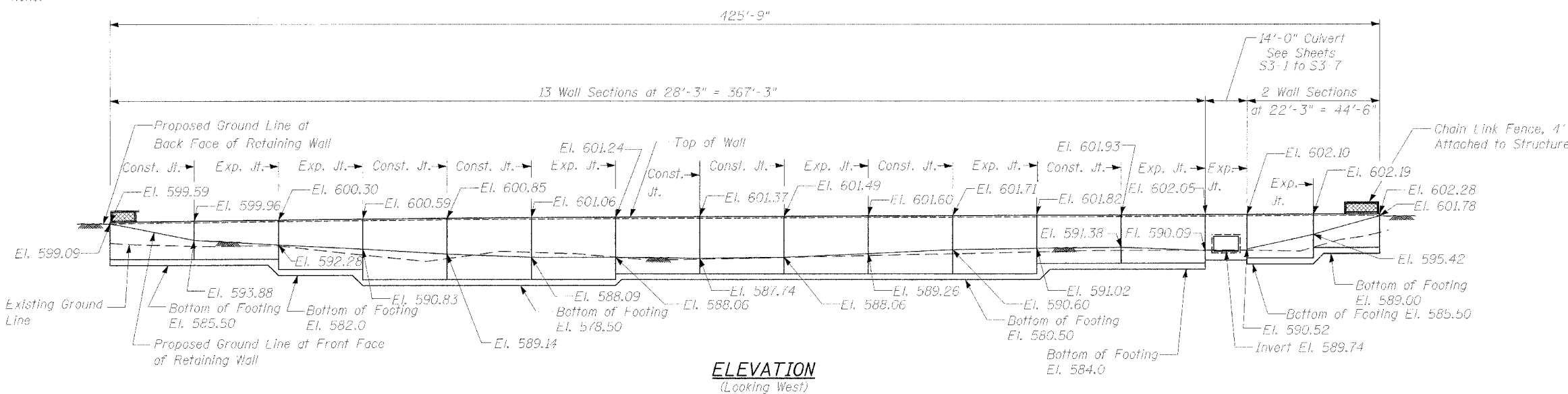
STATE OF ILLINOIS  
DEPARTMENT OF TRANSPORTATION

ROUTE NO.	SECTION	COUNTY	POST MILE	SHEET NO.	SHEET NO. S2-1
F.A.P. 338	114R-1	WILL	355	267	5 SHEETS
FED. AID PROJ. NO. 7	ILLINOIS	FISC. AID PROJECT			

Contract # 62416

TOTAL BILL OF MATERIAL

Item	Unit	Total
Porous Granular Embankment, Special	Cu. Yd.	909
Stone Riprap, Class A4	Sq. Yd.	400
Filter Fabric	Sq. Yd.	400
Structure Excavation	Cu. Yd.	3276
Concrete Structures	Cu. Yd.	839.7
Reinforcement Bars, Epoxy Coated	Pound	116,640
Geocomposite Wall Drain	Sq. Yd.	601
Pipe Underdrains for Structures 4"	Foot	415
Chain Link Fence, 4' Attached to Structure	Foot	412



GENERAL NOTES

- Reinforcement bars shall conform to the requirements of ASTM A 706 Grade 60 (IL Modified). See Special Provisions.
- Reinforcement bars designated (E) shall be epoxy coated.
- All construction joints shall be bonded.
- Exposed concrete edges shall have a standard 3/4" chamfer otherwise noted. Chamfer on vertical edges shall be continued a minimum of 1 foot below the finished ground line.
- Station and offsets are measured from the Proposed Centerline of IL Route 59 to the back face at the top of the retaining wall.
- Layout of the slope protection system may be varied to suit ground conditions in the field as directed by the Engineer.
- Minimum Bar Laps shall be:
 

Bar	Min. Lap
#5	2'-2"
#6	2'-7"

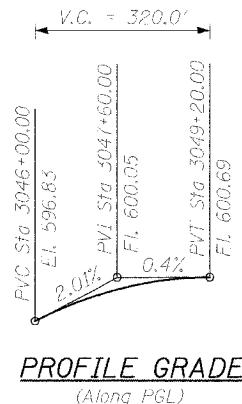
INDEX OF SHEETS

- S2-1 GENERAL PLAN
- S2-2 PLAN AND ELEVATION I
- S2-3 PLAN AND ELEVATION II
- S2-4 PLAN AND ELEVATION III
- S2-5 RETAINING WALL DETAILS
- S2-6 BORING LOGS I
- S2-7 BORING LOGS II
- S2-8 BORING LOGS III

DESIGNED	SLC
CHECKED	MDS
DRAWN	MDS
CHECKED	SLC

CURVE DATA

Δ = 3°-01'-25"  
D = 0°-48'-00"  
R = 7,160.82'  
T = 188.99'  
L = 377.89'  
E = 2.19'  
PC Sta. 3046+14.30  
PT Sta. 3048+03.29  
PT Sta. 3049+92.19



PLAN

LEGEND

- Soil Boring Location
- Rip Rap

DESIGN SPECIFICATIONS

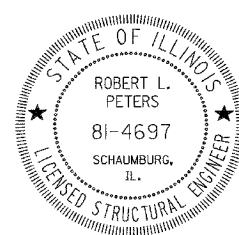
AASHTO 2002 "Standard Specifications for Highway Bridges".

DESIGN STRESSES

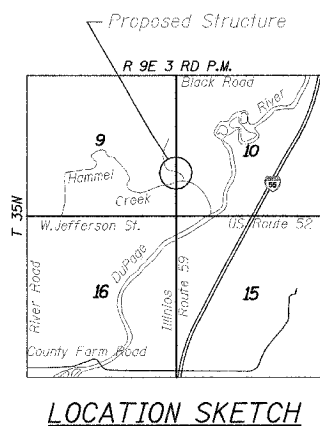
FIELD UNITS  
f'c = 3,500 psi  
fy = 60,000 psi (Reinforcement)

APPROVED  
FOR STRUCTURAL ADEQUACY ONLY

Robert E. Adams  
ENGINEER OF BRIDGES AND STRUCTURES



Robert L. Peters - 03/16/08  
ROBERT L. PETERS, P.E., S.E.  
NO. 081-04697  
EXP. DATE 11/30/08



GENERAL PLAN

RETAINING WALL ALONG IL ROUTE 59  
F.A.P. ROUTE 338 SECTION 114R-1  
WILL COUNTY  
STATION 3047+20.51 TO STATION 3051+44.64  
STRUCTURE NO. 099-W016



1051 PERIMETER DRIVE, SUITE 1025  
SCHAUMBURG, IL 60173-5082  
TEL (847) 605-9600  
FAX (847) 605-9630